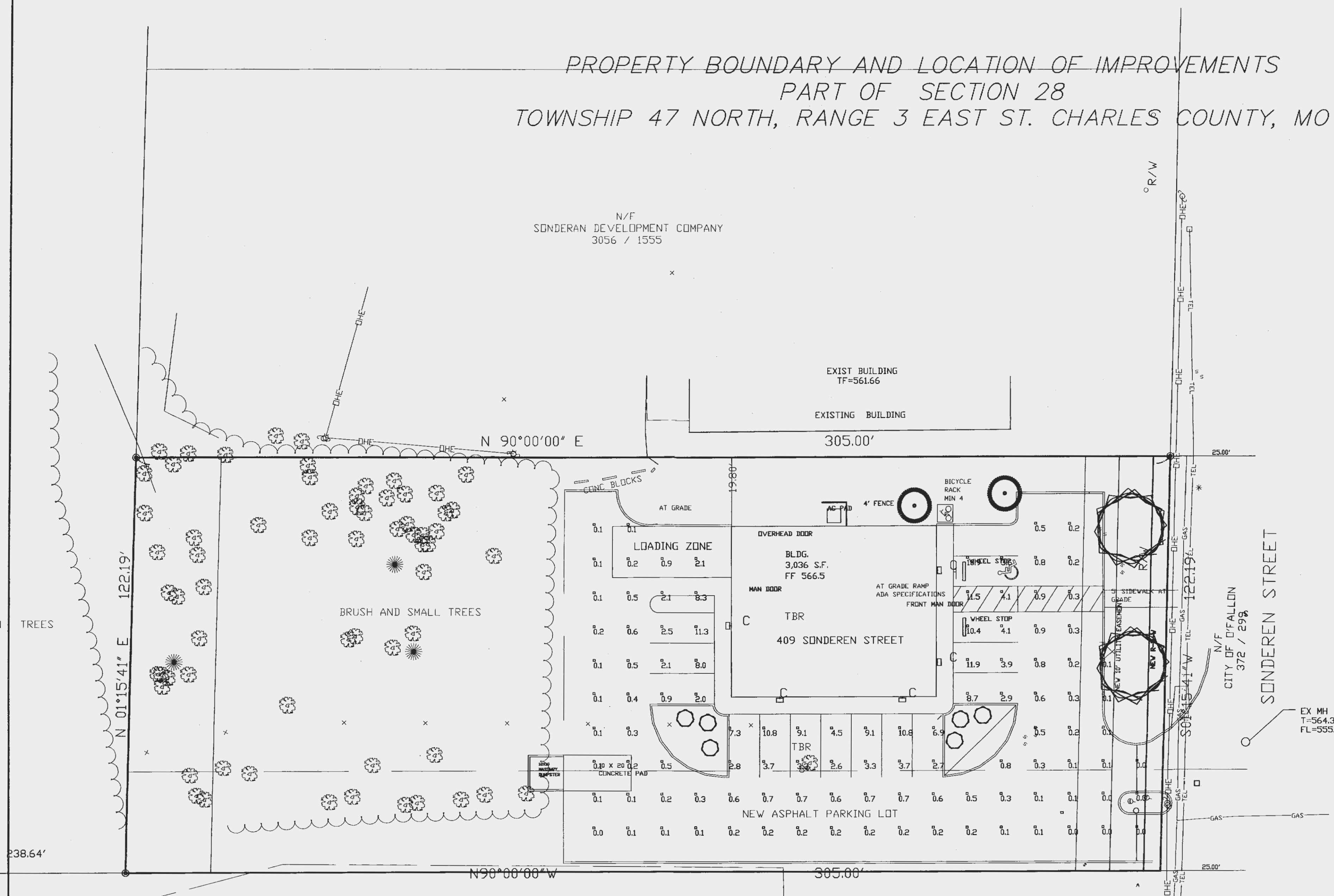


409 SONDEREN STREET

LIGHTING PLAN

PROPERTY BOUNDARY AND LOCATION OF IMPROVEMENTS
PART OF SECTION 28
TOWNSHIP 47 NORTH, RANGE 3 EAST ST. CHARLES COUNTY, MO

N/F
SONDERAN DEVELOPMENT COMPANY
3056 / 1555



NOTE:
LIGHTING VALUES WILL BE REVIEWED ON SITE
PRIOR TO THE FINAL OCCUPANCY INSPECTION.
CORRECTIONS WILL NEED TO BE MADE IF NOT
IN COMPLIANCE WITH CITY STANDARDS

N/F
WILLIAMS
1269 / 560

Luminaire Schedule						
Project: All Projects						
Symbol	Qty	Label	Arrangement	Lumens	LLF	Description
☐	5	C	SINGLE	14000	0.720	MHIP-C-175

Numeric Summary							
Project: All Projects							
Label	CalcType	Units	Avg	Max	Min	Avg/Min	Max/Min
SITE	ILLUMINANCE	Fc	2.00	11.9	0.0	0.00	0.00

COOPER LIGHTING—LUMARK®

IP IMPACT CYLINDER

TYPE: The IMPACT Cylinder is a basic design that balances a wide range of style and design concepts in a single design. It is listed and CSA Certified for use in outdoor down mount applications and can be used in up mount applications.

APPLICATION: The IMPACT Cylinder is a basic design that balances a wide range of style and design concepts in a single design. It is listed and CSA Certified for use in outdoor down mount applications and can be used in up mount applications.

DESCRIPTION: The IMPACT Cylinder is a basic design that balances a wide range of style and design concepts in a single design. It is listed and CSA Certified for use in outdoor down mount applications and can be used in up mount applications.

SPECIFICATION FEATURES:

- A. Housing: The housing is a deep glass design of die-cast aluminum for precise control of tolerances and repeatability.
- B. Mounting: Galvanized and zinc plated rigid steel mounting attachment fits directly on a 2" dia. or wall with "Hook-N-Lock" mechanism for quick installation. Secured with two (2) captive corrosion resistant steel screws coated with lead free zinc.
- C. Optical Module: All optical modules utilize high performance light emitting diodes. Strong Type II optical module is available.
- D. Finish: IMPACT Cylinder powder coat finish. Standard color is bronze. Optional white, black and other colors available. Other finish options available. Consult your Cooper Lighting Representative concerning special color requirements.
- E. Glass: IMPACT Cylinder is available with high pressure sodium, metal halide, or compact fluorescent lamps. High pressure sodium lamps are available in 100W, 150W, 200W, 250W, 300W, 350W, 400W, 450W, 500W, 550W, 600W, 650W, 700W, 750W, 800W, 850W, 900W, 950W, 1000W.
- F. Mounting: IMPACT Cylinder is available with high pressure sodium, metal halide, or compact fluorescent lamps. High pressure sodium lamps are available in 100W, 150W, 200W, 250W, 300W, 350W, 400W, 450W, 500W, 550W, 600W, 650W, 700W, 750W, 800W, 850W, 900W, 950W, 1000W.

PHOTOGRAPHIC DATA: The IMPACT Cylinder is available with high pressure sodium, metal halide, or compact fluorescent lamps. High pressure sodium lamps are available in 100W, 150W, 200W, 250W, 300W, 350W, 400W, 450W, 500W, 550W, 600W, 650W, 700W, 750W, 800W, 850W, 900W, 950W, 1000W.

ORDERING INFORMATION: The IMPACT Cylinder is available with high pressure sodium, metal halide, or compact fluorescent lamps. High pressure sodium lamps are available in 100W, 150W, 200W, 250W, 300W, 350W, 400W, 450W, 500W, 550W, 600W, 650W, 700W, 750W, 800W, 850W, 900W, 950W, 1000W.



1	4-28-05	CITY COMMENT LETTER	REB
No.	Date	Description	By
Prepared For:			Drawn by
409 SONDEREN			Checked by
O'FALLON, MO			Issued
Lighting & Associates			Job Number
186 East Kirkham			Sheet
Webster Groves, MO 63119			4
Paul Kuhlmann			of 6
(314) 531-3500			Sheets

LIGHTING PLAN