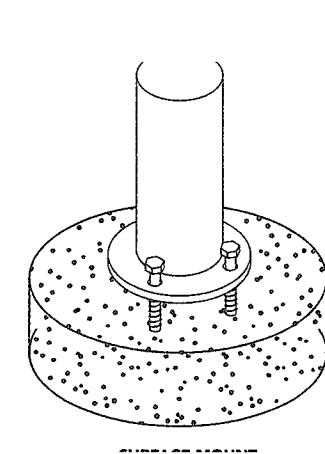


Product Details:

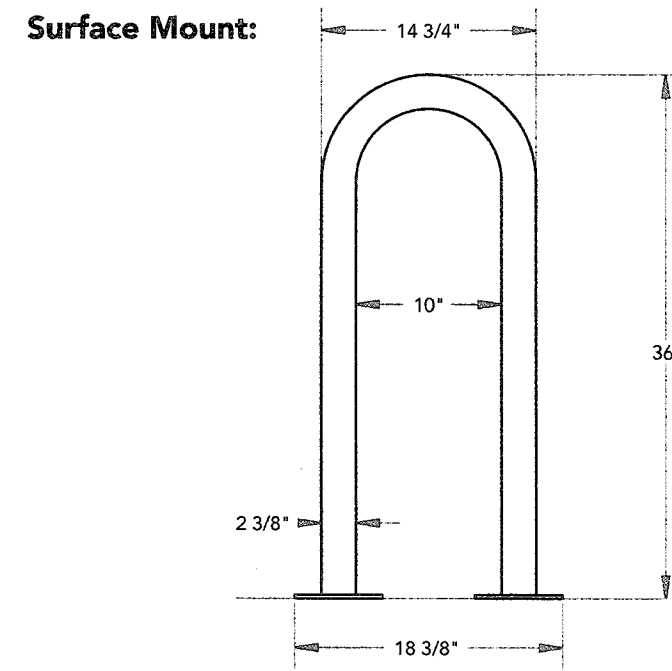
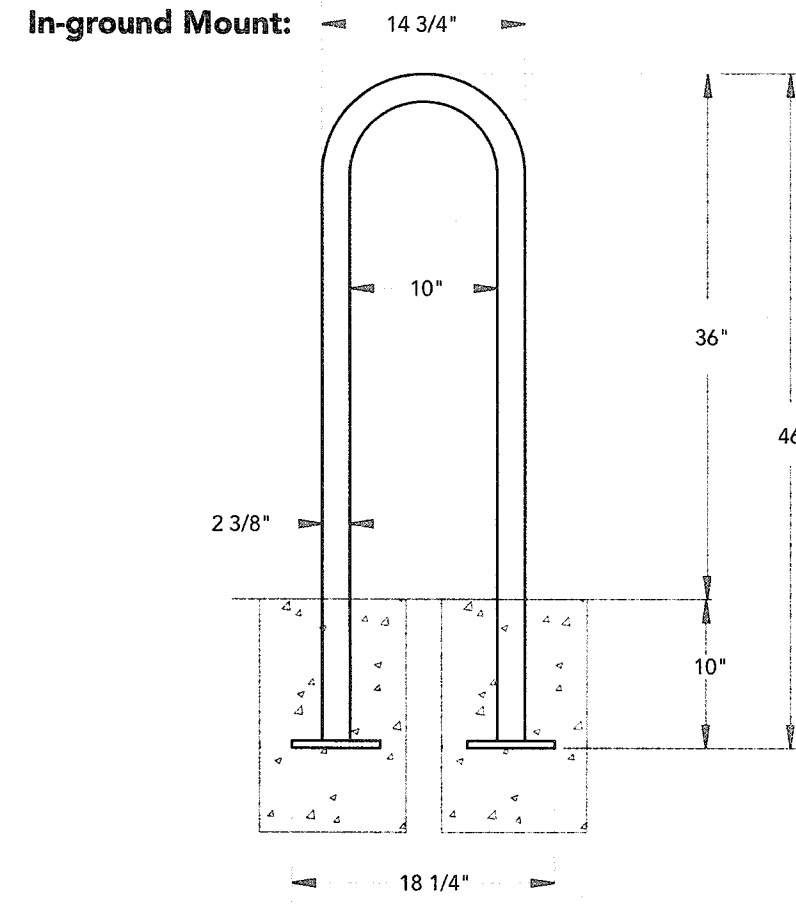
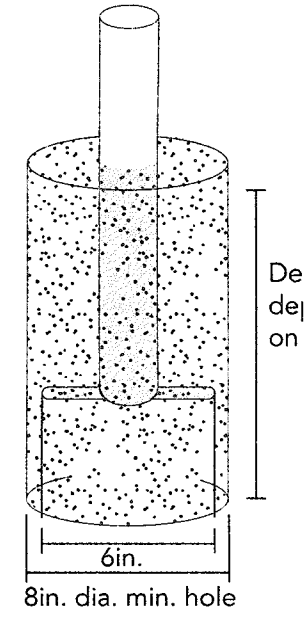
Dimensions Length 18.38" / Depth 2.375" / Height 36" (46" In Ground) / Mounting Plat
Weight Surface Mount: 32-lbs In-ground: 36-lbs
Styling Contemporary
Capacity Holds 3 Bikes
Finish Durable baked-on powder coat, high-grade galvanized steel, or electrostatically oven cured SealGuard™
Construction Heavy-Duty 2 3/8" O.D. Steel

Mounting Types:

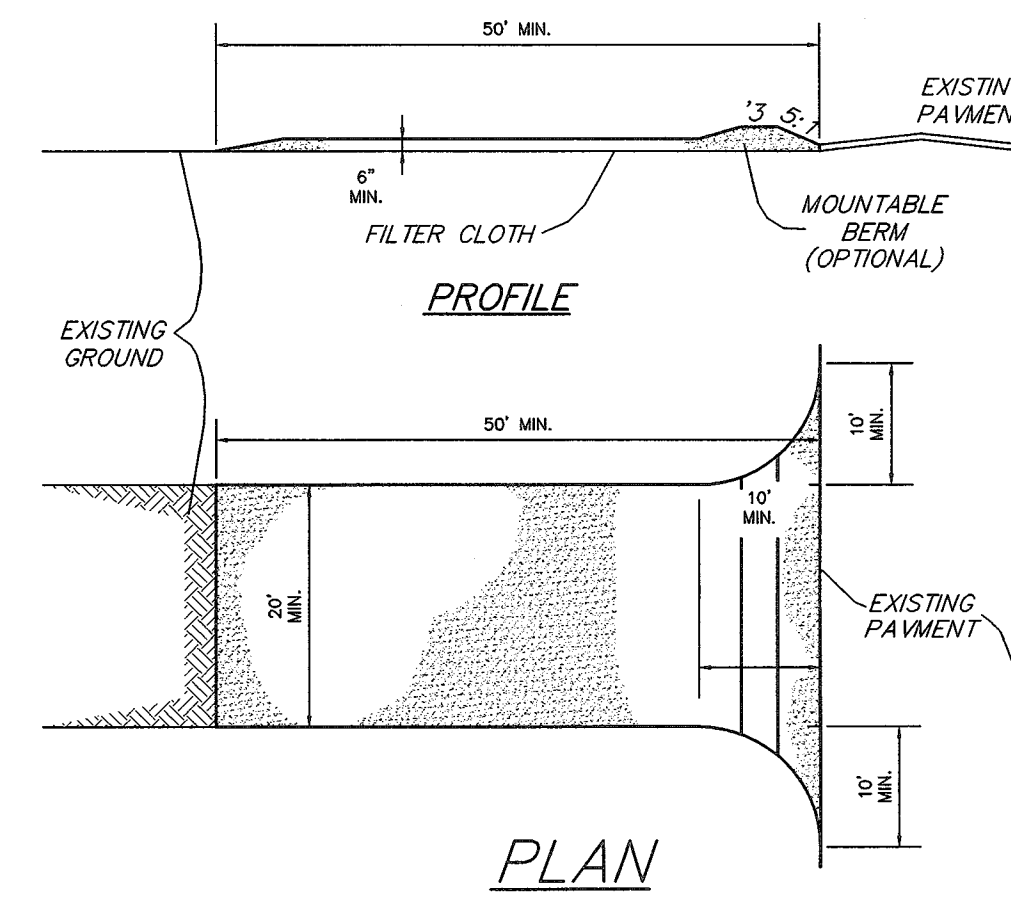
Surface:
Bolts through bottom plate into pre-drilled concrete into ground anchors. Use appropriate length and size bolt for local requirements.



IG = In-Ground:
Embedded in hole filled with concrete. Depth of the hole varies depending on local code.

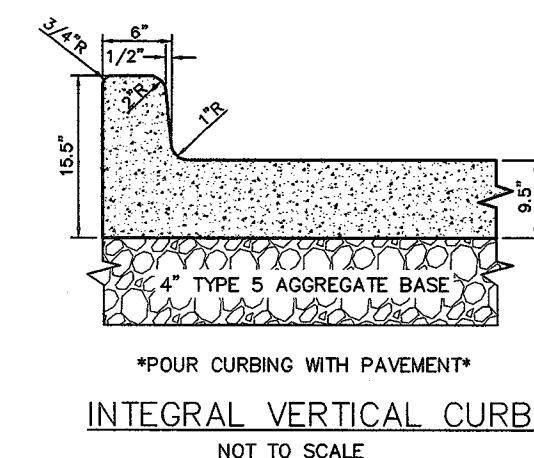


STABILIZED CONSTRUCTION ENTRANCE

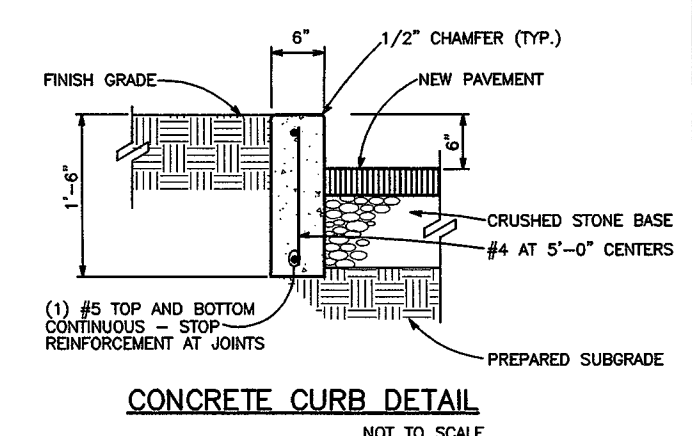


CONSTRUCTION SPECIFICATIONS

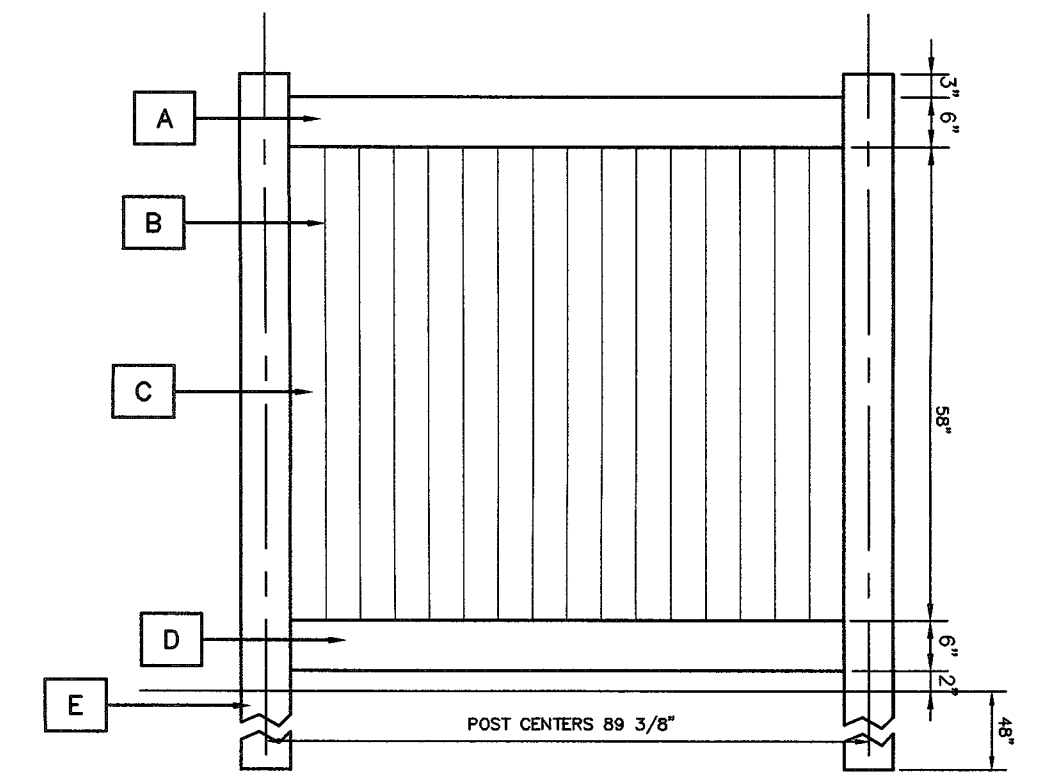
1. Stone Size - Use 2" stone, or reclaimed or recycled concrete equivalent.
2. Length - As required, but not less than 50 feet minimum length would apply.
3. Thickness - Not less than six (6) inches.
4. Width - Twenty (20) foot minimum, but not less than the full width at points where ingress or egress occurs.
5. Filter Cloth - Will be placed over the entire area prior to placing of stone. Filter will not be required on a single family residence lot.
6. Surface Water - All surface water flowing or diverted toward construction entrances shall be piped across the entrance. If piping is impractical, a mountable berm with 5:1 slopes will be permitted.
7. Maintenance - The entrance shall be maintained in a condition which will prevent tracking or flowing of sediment onto public rights-of-way. This may require periodic top dressing with additional stone as conditions demand and repair and/or cleanout of any measures used to trap sediment. All sediment spilled, dropped, washed or tracked onto public rights-of-way must be removed immediately.
8. Washing - Wheels shall be cleaned prior to entrance onto public rights-of-way. When washing is required, it shall be done on an area stabilized with stone and which drains into an approved sediment trapping device.
9. Periodic inspection and needed maintenance shall be provided after each rain.
10. If water is not available, a water truck is to be provided.



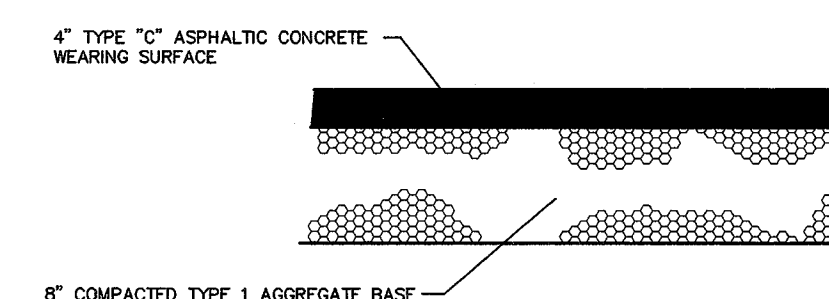
INTEGRAL VERTICAL CURB
NOT TO SCALE



CONCRETE CURB DETAIL
NOT TO SCALE

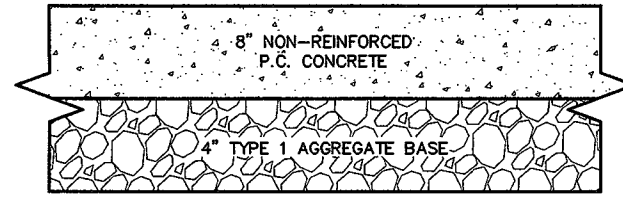


6' HIGH VINYL PRIVACY FENCE
NOT TO SCALE

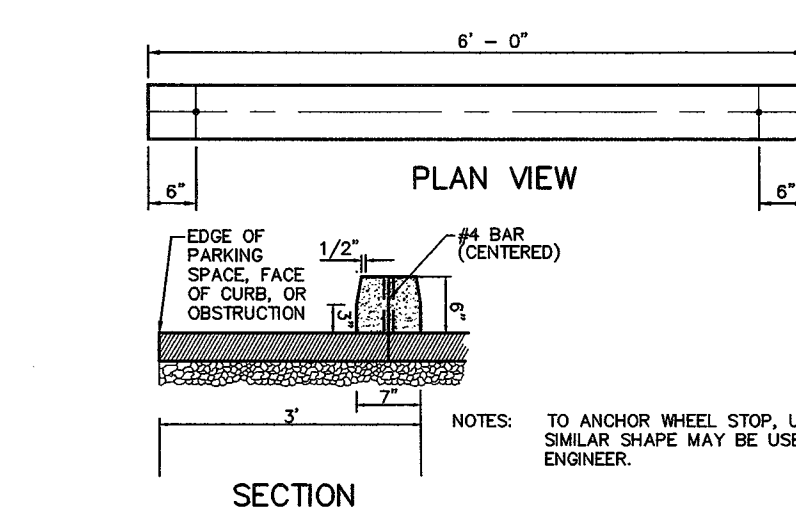


ASPHALT PAVEMENT DETAIL
NOT TO SCALE

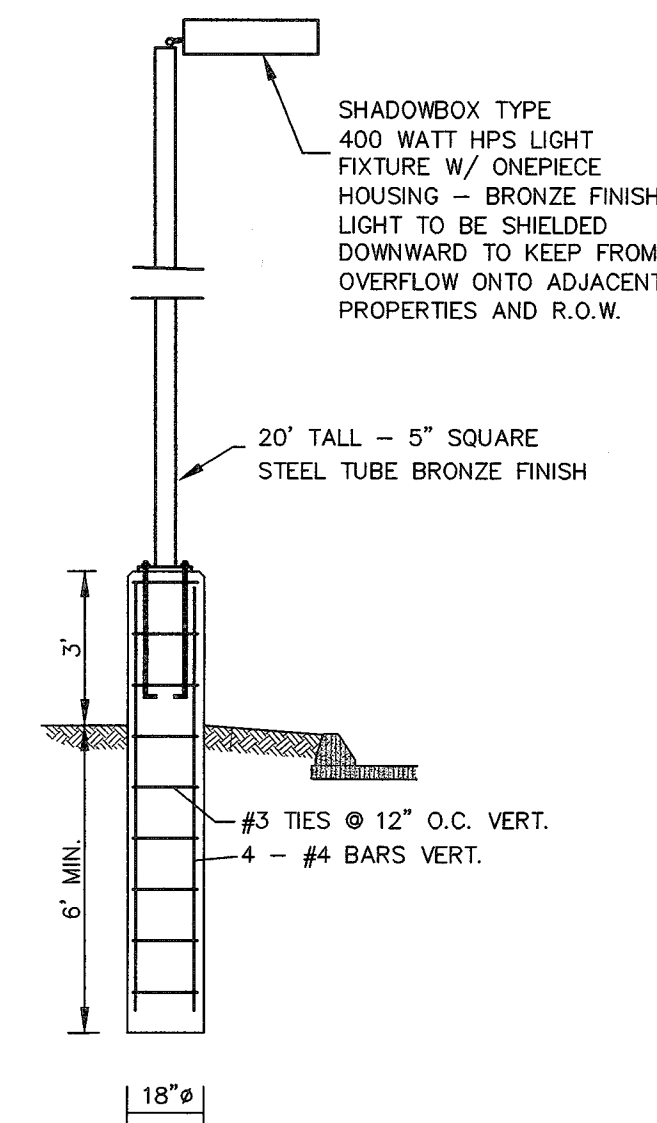
THE ASPHALT SURFACE SHALL BE COMPACTED TO 98% MAXIMUM DENSITY.
 ALL GRANULAR ROLLED STONE BASE UNDER PROPOSED CONCRETE MUST BE COMPACTED TO 100% OF THE MAXIMUM DENSITY AS DETERMINED BY THE STANDARD PROCTOR TEST AASHTO T-99.



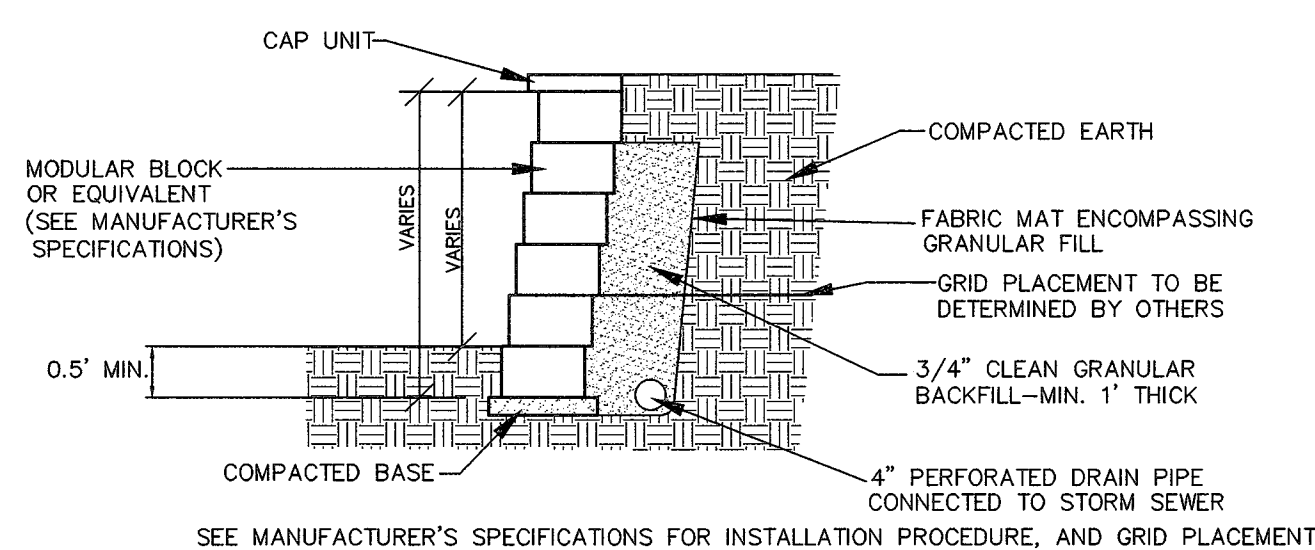
CONCRETE PAVEMENT DETAIL
NOT TO SCALE



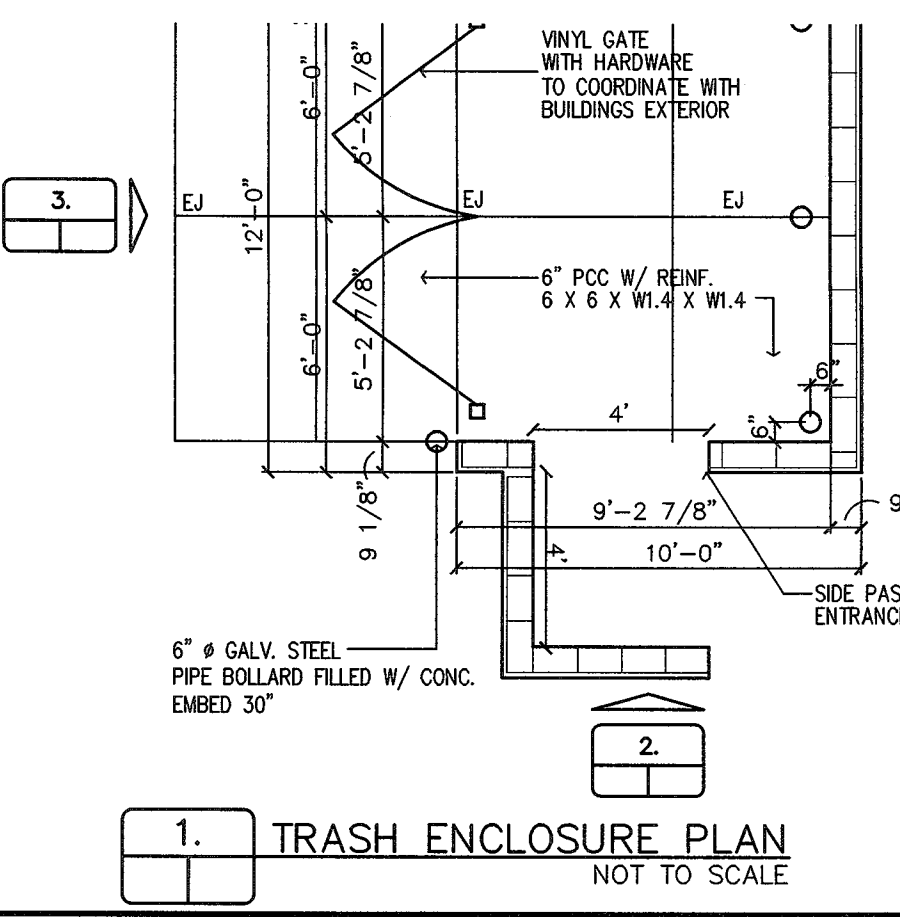
PRECAST CONCRETE WHEELSTOP



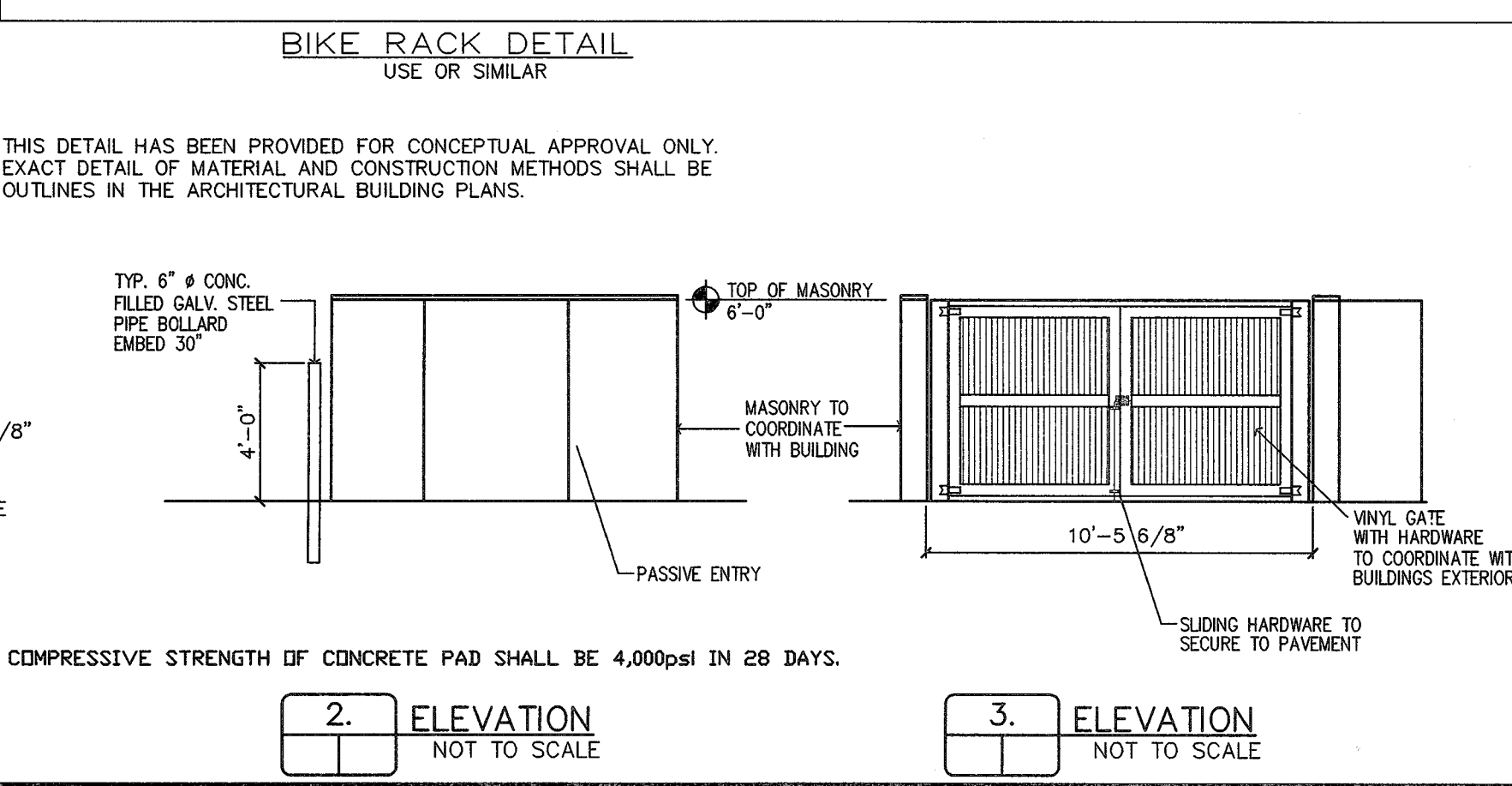
LIGHT POLE & BASE
NOT TO SCALE



MODULAR BLOCK CONCRETE RETAINING WALL
(RETAINING WALL DESIGN BY OTHERS) NOT TO SCALE



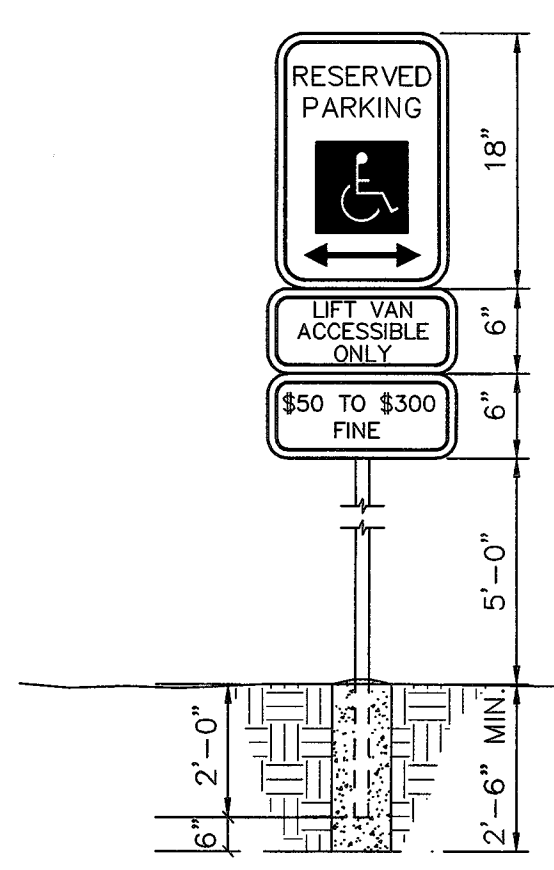
1. TRASH ENCLOSURE PLAN
NOT TO SCALE



2. ELEVATION
NOT TO SCALE

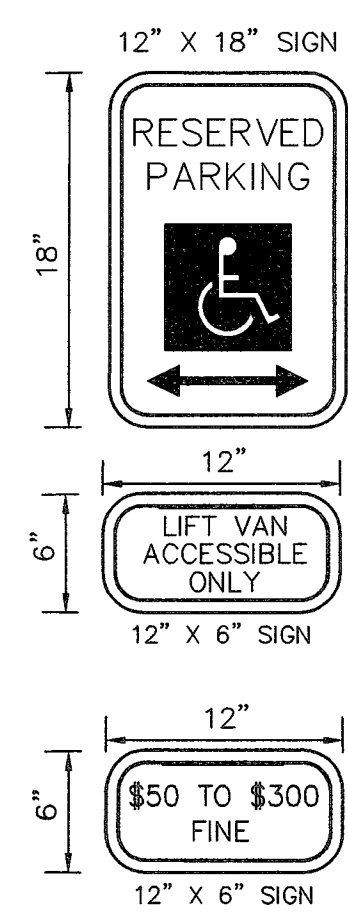
3. ELEVATION
NOT TO SCALE

PER RN #19 ON SHEET 2
 SIGN POST, MOUNTING HARDWARE AND BACK OF SIGN SHALL BE PAINTED BLACK USING CARBOLINE RUST BOND PENETRATING SEALER SG AND CARBOLINE 133 HB PAINT (OR EQUIVALENT AS APPROVED BY CITY OF O'FALLON AND MODOT).



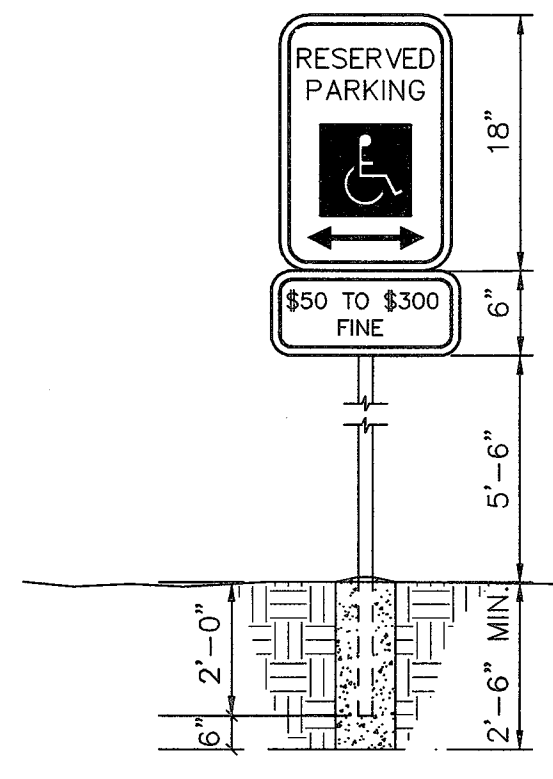
ACCESSIBLE VAN PARKING SIGN
NOT TO SCALE

SIGN DESIGNATIONS ARE FROM THE CURRENT MANUAL ON UNIFORM TRAFFIC CONTROL DEVICES.
 STANDARD SIGN FACE, STANDARD HIGHWAY DEPARTMENT, OR CITY STREET DEPARTMENT GAUGE, LETTERS AND BORDERS ARE GREEN, THE HANDICAP LOGO SQUARE IS BLUE AND THE BACKGROUND IS WHITE, GALVANIZED PIPE POST 9'-6" LONG, SET 2'-0" INTO GRADE, SET BOTTOM OF "FINE" SIGN 5'-0" ABOVE FINISHED GRADE.
 CONTRACTOR TO VERIFY ALL SIGNAGE WITH CITY PRIOR TO ORDERING ALL SIGNAGE.



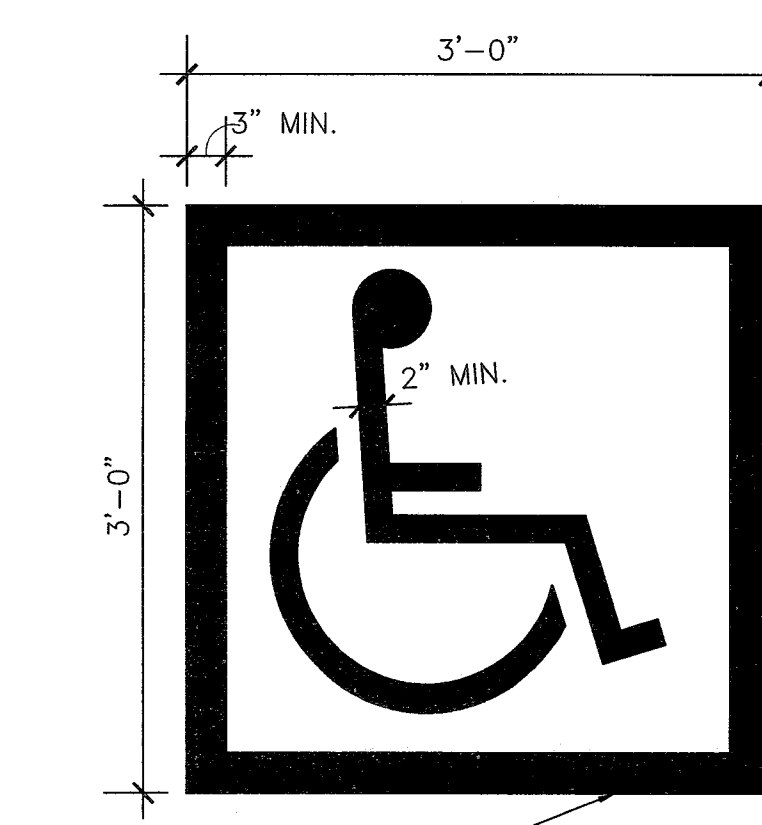
ACCESSIBLE CAR PARKING SIGN
NOT TO SCALE

SIGN DESIGNATIONS ARE FROM THE CURRENT MANUAL ON UNIFORM TRAFFIC CONTROL DEVICES.
 STANDARD SIGN FACE, STANDARD HIGHWAY DEPARTMENT, OR CITY STREET DEPARTMENT GAUGE, LETTERS AND BORDERS ARE GREEN, THE HANDICAP LOGO SQUARE IS BLUE AND THE BACKGROUND IS WHITE.
 CONTRACTOR TO VERIFY ALL SIGNAGE WITH CITY PRIOR TO ORDERING ALL SIGNAGE.

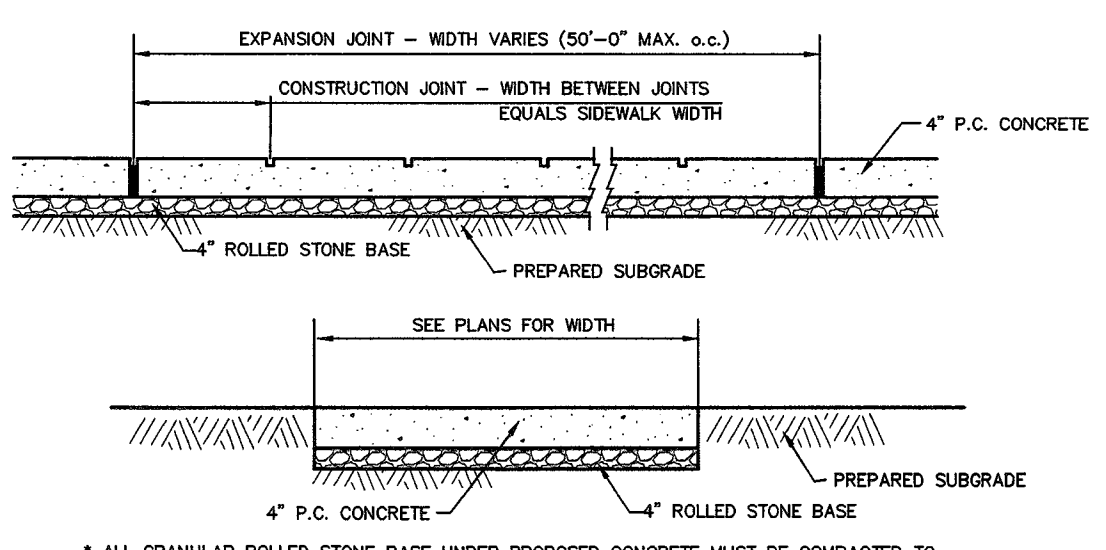


PAINTED ACCESSIBLE PARKING SYMBOL
NOT TO SCALE

SIGN DESIGNATIONS ARE FROM THE CURRENT MANUAL ON UNIFORM TRAFFIC CONTROL DEVICES.
 STANDARD SIGN FACE, STANDARD HIGHWAY DEPARTMENT, OR CITY STREET DEPARTMENT GAUGE, LETTERS AND BORDERS ARE GREEN, THE HANDICAP LOGO SQUARE IS BLUE AND THE BACKGROUND IS WHITE, GALVANIZED PIPE POST 9'-6" LONG, SET 2'-0" INTO GRADE, SET BOTTOM OF "FINE" SIGN 5'-6" ABOVE FINISHED GRADE.
 CONTRACTOR TO VERIFY ALL SIGNAGE WITH CITY PRIOR TO ORDERING ALL SIGNAGE.



CURB TAPER DETAIL



CONCRETE SIDEWALK DETAIL
NOT TO SCALE

ALL GRANULAR ROLLED STONE BASE UNDER PROPOSED CONCRETE MUST BE COMPACTED TO 100% OF THE MAXIMUM DENSITY AS DETERMINED BY THE STANDARD PROCTOR TEST AASHTO T-99. CONCRETE COMPRESSIVE STRENGTH SHALL BE 4000 PSI IN 28 DAYS.

PROJECT TITLE:
TAUC PROPERTIES
O'FALLON MAIN
507 S. MAIN ST.

ENGINEERING
PLANNING
SURVEYING
221 Point West Blvd.
St. Charles, MO 63301
636-928-5562
FAX 636-928-1718



DISCLAIMER OF RESPONSIBILITY
 I hereby specify that the documents intended to be authorized by my seal are limited to this sheet, and I hereby disclaim any responsibility for all other Drawings, Specifications, Estimates, Reports or other documents or instruments relating to or intended to be used for any part of the project of the architectural or engineering work shown on this sheet.
 CLIFFORD L. HEITMANN
 REGISTERED PROFESSIONAL ENGINEER
 CIVIL ENGINEER
 E29817

Copyright 2016
 Box Engineering Company, Inc.
 Engineering Authority No. 000655
 Surveying Authority No. 000144
 All Rights Reserved

REVISIONS

8-31-16	COMMENTS FROM CITY
10-7-16	COMMENTS FROM CITY

Developer / Owner:
DR MATT BRUCKEL
TAUC PROPERTIES LLC
9556 MANCHESTER ROAD
ST. LOUIS, MO 63119

P+Z No.
19-16 (approved 7-7-16)
City No.
16-00028

Page No.
16 of 19

CONSTRUCTION DETAILS