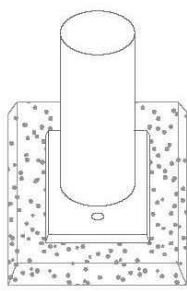


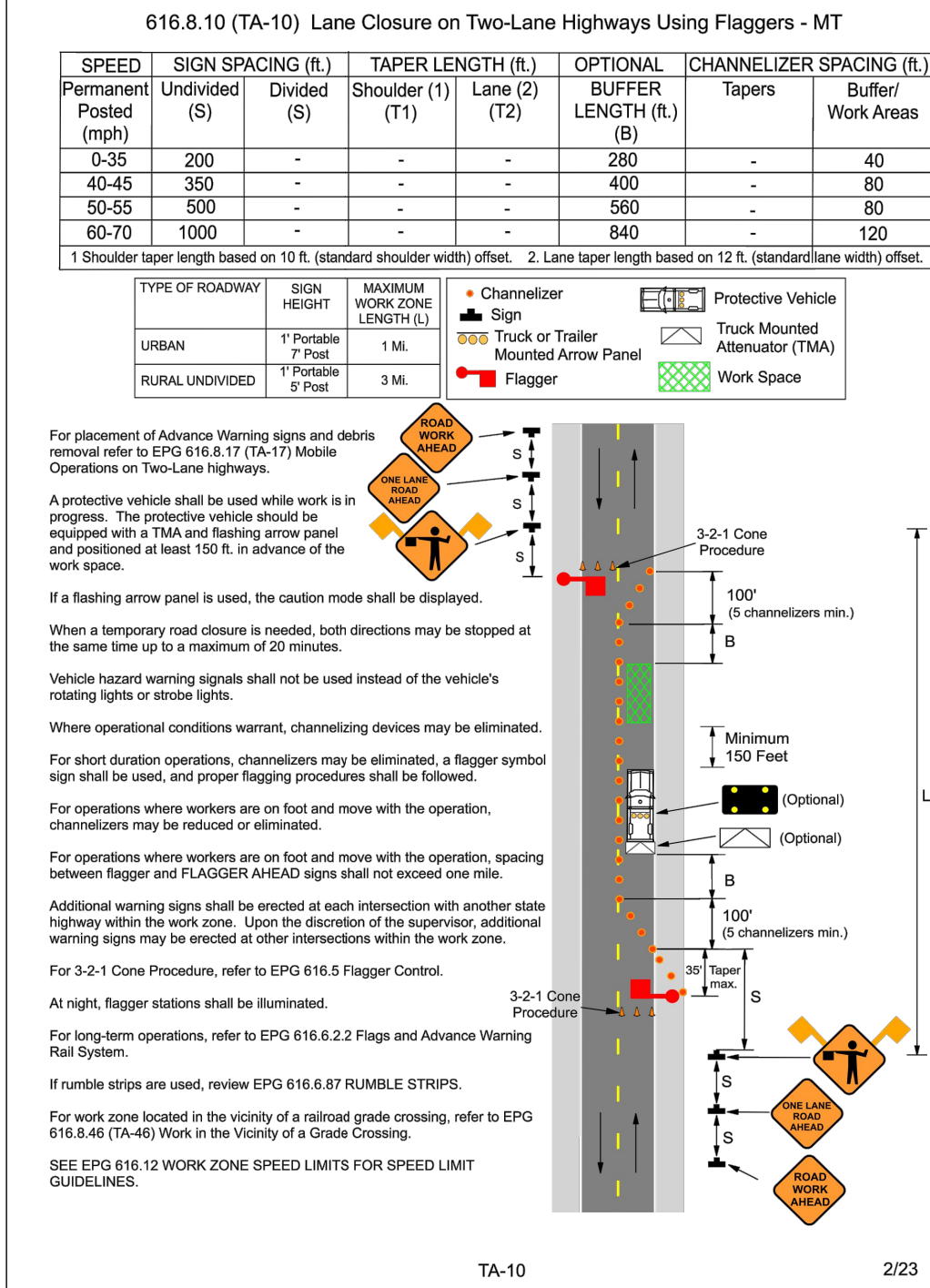
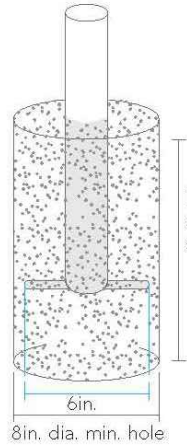


<b>Product Details:</b>	
Dimensions	Length 24" / Depth 1.9" / Height 36" (46" In Ground) / Mounting Plates 6"
Weight	Surface Mount: 19-lbs In-ground: 22-lbs
Styling	Contemporary
Capacity	Holds 2 Bikes
Finish	Durable baked-on powder coat or hot dipped galvanized
Construction	Standard-Duty 1.5" Schedule 40 Pipe (1.9" OD) Steel

**Surface Mount:**  
Bolts through bottom plate into pre-drilled concrete into ground anchors. Use appropriate length and size bolt for local requirements.



**In-ground Mount:**  
Embedded in hole filled with concrete. Depth of the hole varies depending on local code.



PROJECT TITLE:

ASPEN ACADEMY  
740 WELKER PARKWAY  
O'FALLON, MISSOURI 63385

Bax Project # 24-16168 Issue Date: 11/7/2024

ENGINEERING  
PLANNING  
SURVEYING



221 Point West Blvd.  
St. Charles, MO 63301  
636-928-5552  
FAX 928-1718

REFERENCE DRAWINGS  
ONLY, ENGINEERS  
SEAL DOES NOT  
APPLY TO THESE  
DETAILS

REVISIONS

11-25-24	dcsd & pwsd2	comments
12-18-24	city	comments

Developer / Owner:

VM MUELLER PROPERTIES LLC - MADELINE MUELLER  
3298 DYER ROAD  
O'FALLON, MISSOURI 63366  
636-544-4357 - madeline.bathe@yahoo.com

CONSTRUCTION DETAILS

P+Z No. # 24-0025299  
Approval Date: Sept 5, 2024

City No. #

Page No.

12 of 18