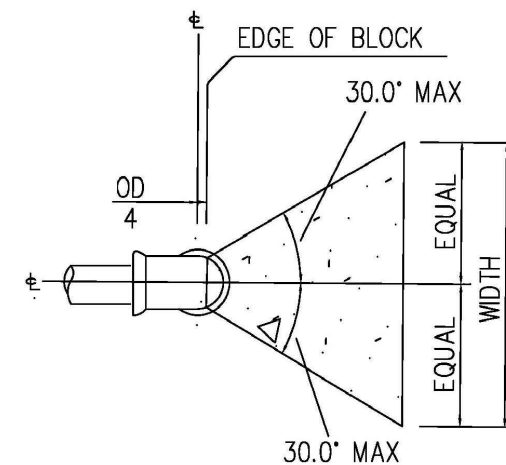


THRUST BLOCK (Plan View)

N.T.S.



THRUST BLOCK (Elevation)

NOTE: IF NOT USING JOINT RESTRAINT FITTING

N.T.S.

## THRUST BLOCK NOTES AND DIMENSIONS

PIPE SIZE	MINIMUM BEARING AREA (SQ. FT.) = WIDTH x DEPTH				HYD., TEE, CAP VALVE, PLUG
	90° BEND	45° BEND	22.5° BEND	11.25° BEND	
6	5	3	2	1	4
8	8	5	3	2	6
10	13	7	4	2	9
12	18	10	5	3	13

## FIRE LINE DETAILS



Image depicts Series 3800 on 6 inch ductile iron pipe and 6 inch PVC pipe.

The Series 3800 are designed to restrain forces based on the maximum working pressure ratings listed in the Pressure Ratings Table.

Forces experienced due to expansion/contraction of the pipe require special consideration.

For use on water or wastewater pipelines subject to hydrostatic pressure and tested in accordance with either AWWA C600 or ASTM D2774.

Available End Connections & Size Range	Figure No. with (STD)	Post Plate
Fig. End (NRS)	2" - 12"	8701ASS (3"-12")
M.J.	2" - 12" except 2 1/2"	8571SS (3"-12")
Fig. & M.J.	3" - 12"	8572SS (3"-12")
Push-on for PVC (SDR)	2" - 6"	8507SS (3"-6")
Fig. End (OS & Y)	2" - 12"	8068A N/A
M.J. for Tapping	4" - 12"	8905SS 8906SS
Push-on for D.I. & C900 PVC	4" - 12"	8901SS 8901PSS
M.J. Cutting-in	4" - 12"	8576SS 8576PSS
Push-on D.I. & X Fig.	4" - 12"	8902SS 8902PSS
Threaded	2" - 3"	8507SS 8507PSS (3" only)
Threaded (OS&Y)	2" - 3"	8507SS N/A

Accessories:  
Indicator Posts  
1" Handles  
Shim Guides  
2" Sq. Operating Nuts  
Floorstands (non-rising stem)

Handwheels  
Extension Steams  
Floor Boxes  
Chain Wheels

NOTE: 2" OS&Y Flanged and Threaded versions are UL Listed



08/1/13

Kennedy Valve/KS-FW C509

3-1

### Features and Applications:

- For use on:
  - Ductile Iron Pipe, 4 in. - 64 in.
  - C900 in ASTM D2241 PVC Pipe, 4 in. - 12 in.
  - C905 PVC Pipe, 14 in. - 36 in.
  - Carbon Steel Pipe, 4 in. - 12 in.
  - HDPE Pipe, 4 in. - 12 in.
- Minimum 2 to 1 Safety Factor

- MEGA-BOND® Restrained Coating System  
For more information regarding MEGA-BOND, refer to our web site at [www.ebaa.com](http://www.ebaa.com)

- Constructed of:
  - Restraint Rings - ASTM A536 Ductile Iron (DI)
  - Coupling Sleeve - 4" - 12 in., ASTM A536 DI
  - Coupling Sleeve - 14 in. and greater, Carbon Steel
  - Double Ended Threaded Rods w/Nuts - Corrosion Resistant, low alloy, high strength steel per ANSI/AWWA C111/A21.11
  - ASTM D2000

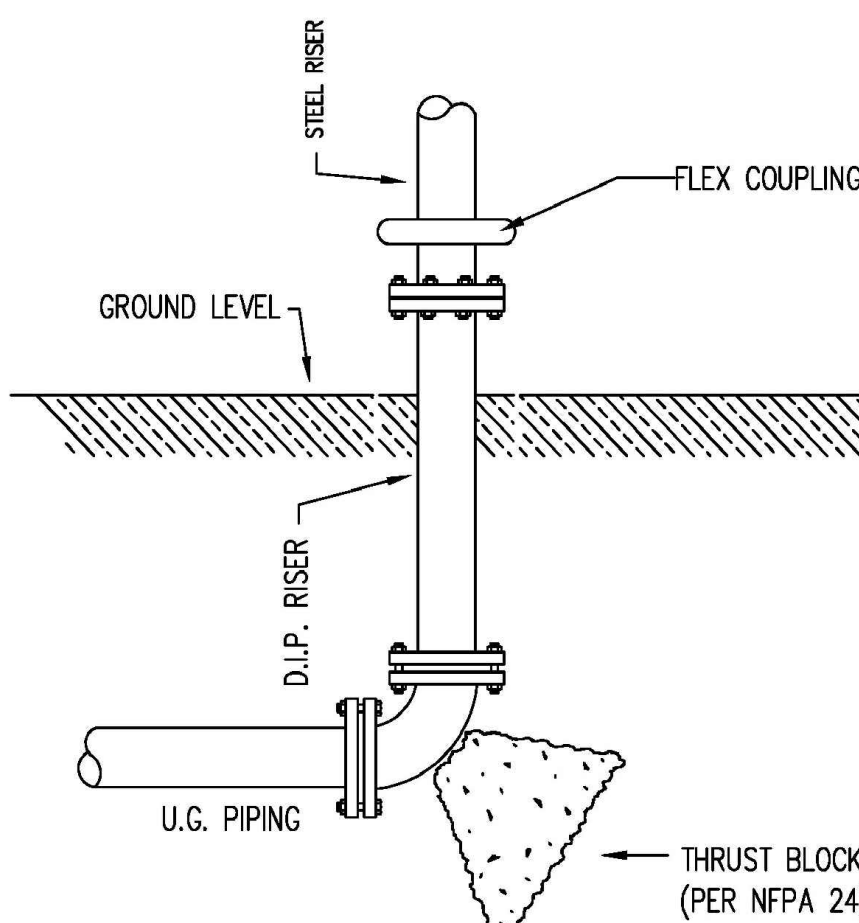
- Couplings meet or exceeds the applicable requirements of:
  - AWWA C239
  - ASTM A536
  - ANSI/AWWA C111/A21.11
  - ASTM D2000

Available End Connections & Size Range	Figure No. with (STD)	Post Plate
Fig. End (NRS)	2" - 12"	8701ASS (3"-12")
M.J.	2" - 12" except 2 1/2"	8571SS (3"-12")
Fig. & M.J.	3" - 12"	8572SS (3"-12")
Push-on for PVC (SDR)	2" - 6"	8507SS (3"-6")
Fig. End (OS & Y)	2" - 12"	8068A N/A
M.J. for Tapping	4" - 12"	8905SS 8906SS
Push-on for D.I. & C900 PVC	4" - 12"	8901SS 8901PSS
M.J. Cutting-in	4" - 12"	8576SS 8576PSS
Push-on D.I. & X Fig.	4" - 12"	8902SS 8902PSS
Threaded	2" - 3"	8507SS 8507PSS (3" only)
Threaded (OS&Y)	2" - 3"	8507SS N/A

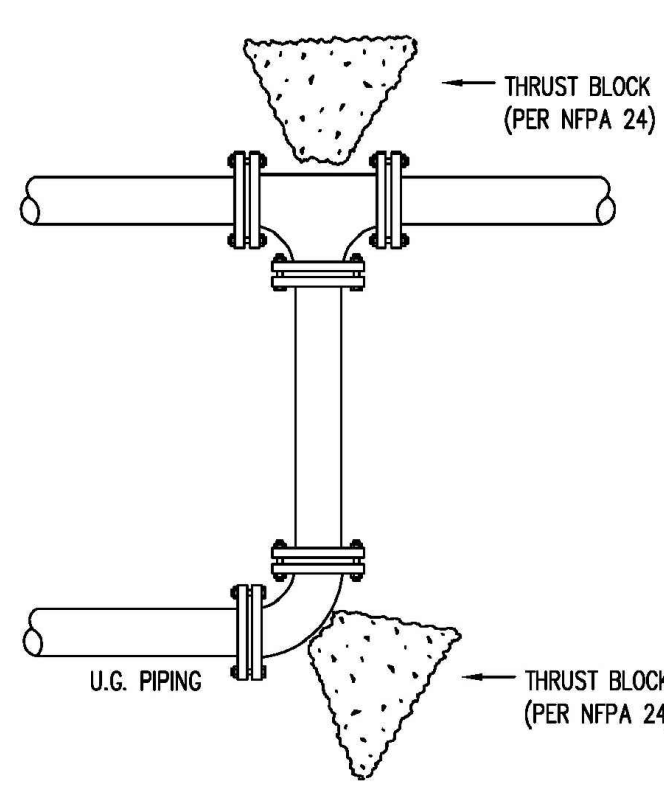
Special Notes For Use On HDPE Pipe  
For use on 4 inch through 12 inch HDPE only. The use of a pipe wall stiffening insert is required for use on HDPE pipe. The stiffeners must be sized to encompass the entire bearing length of the restraint devices. Pipe systems must be engineered to prevent movement causing fitting to slide or rotate.

EBA products for HDPE are designed for underground pressurized fluid service and are pressure rated to match the pipe SDR pressure rating, derated as appropriate for service temperature. Maximum test pressure limited to pipe rated pressure.

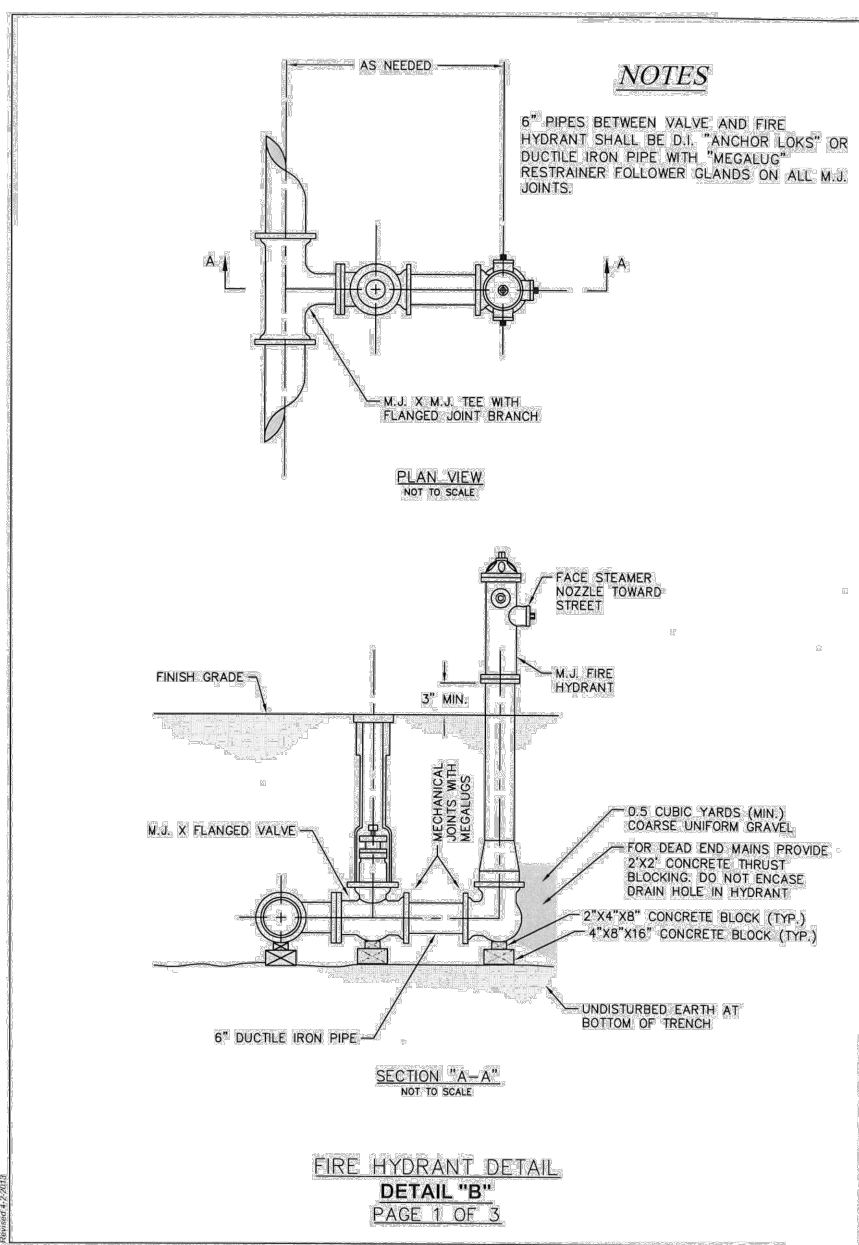
Copyright 2017 © EBA A.B. Inc.



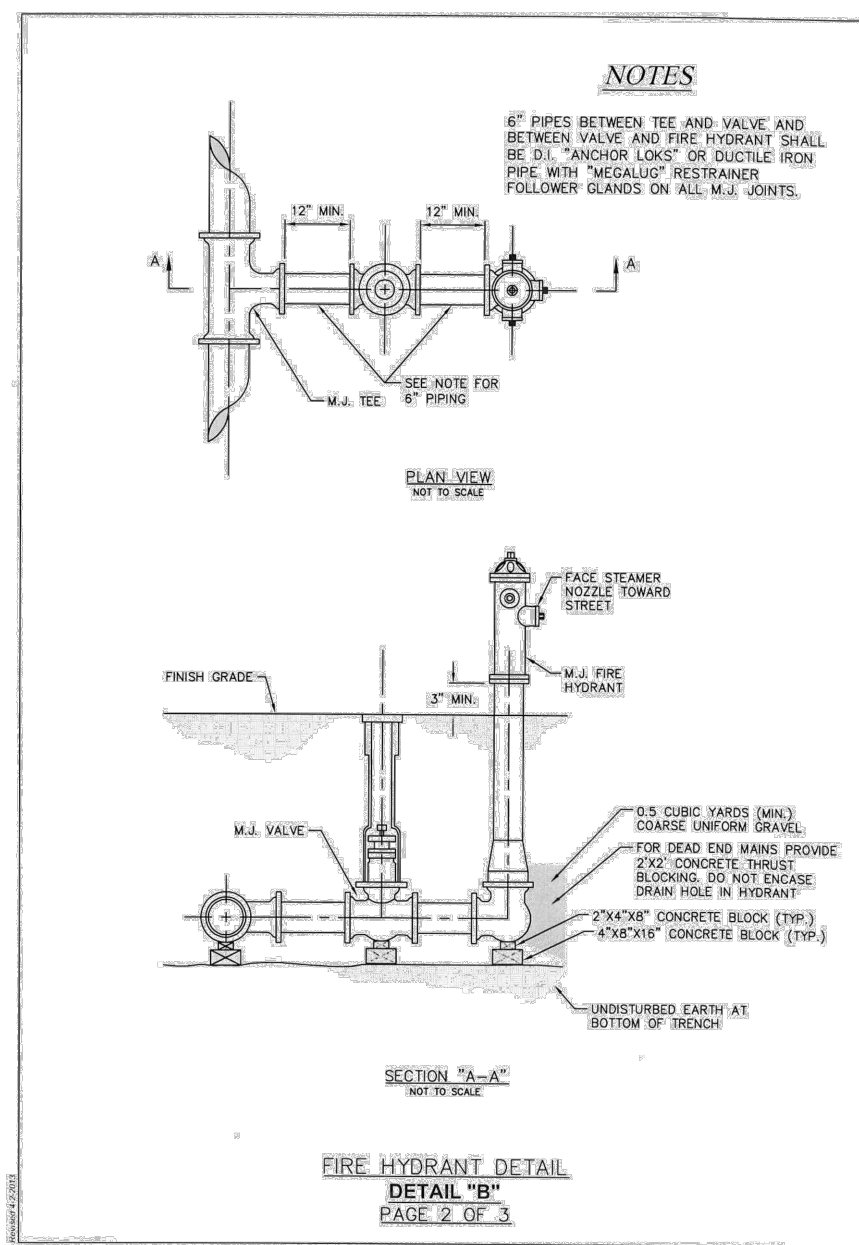
## UNDERGROUND STUB UP



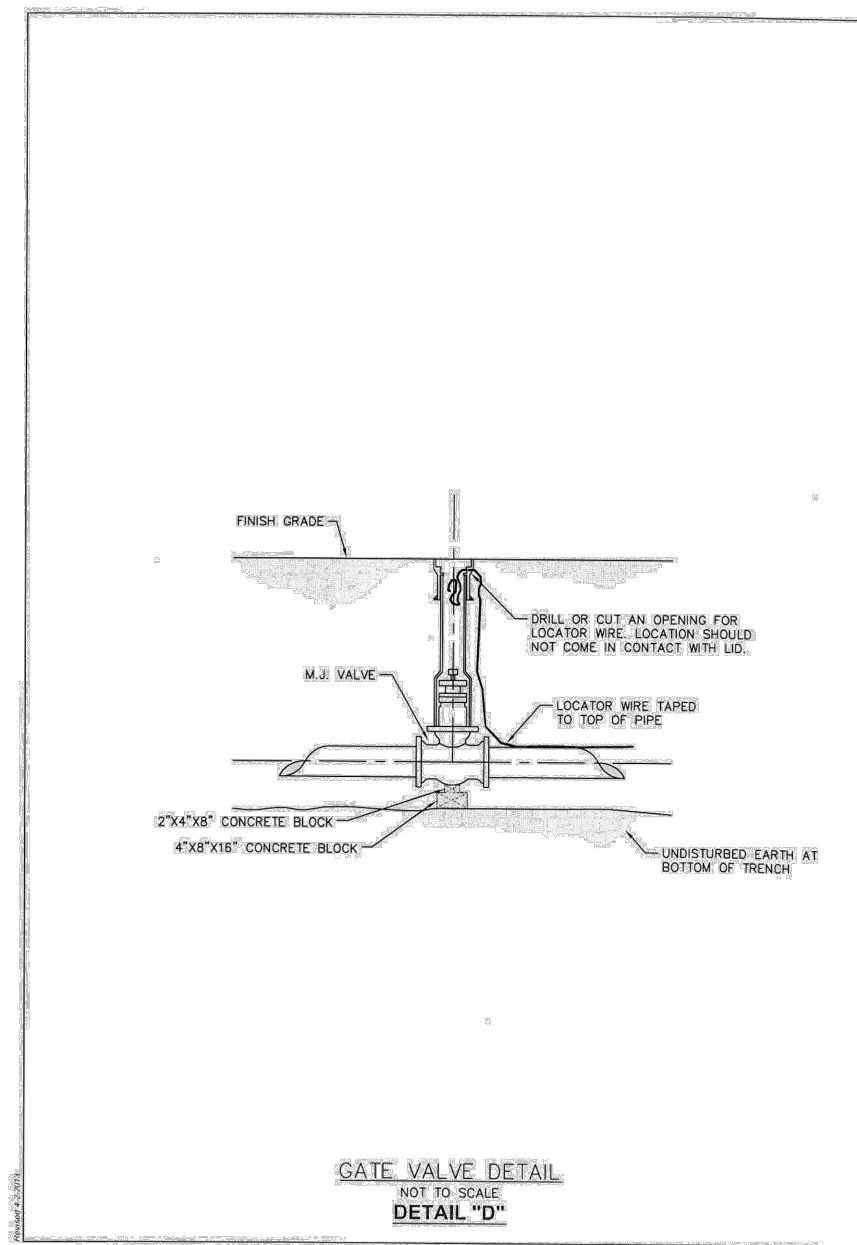
TYP. CONCRETE THRUST BLOCKS  
@ PIPING CHANGE OF DIRECTION



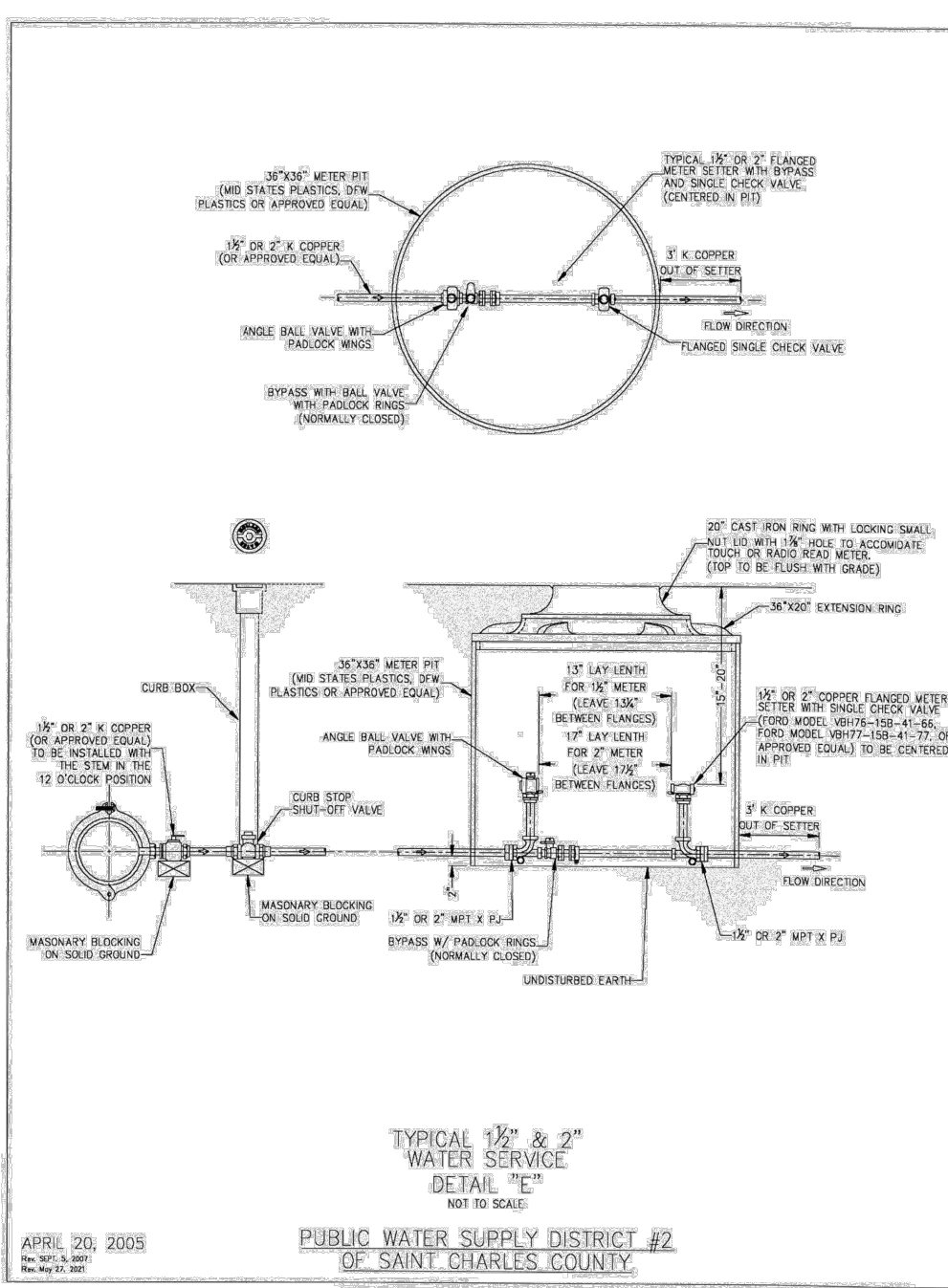
FIRE HYDRANT DETAIL  
DETAIL "B"  
PAGE 1 OF 3



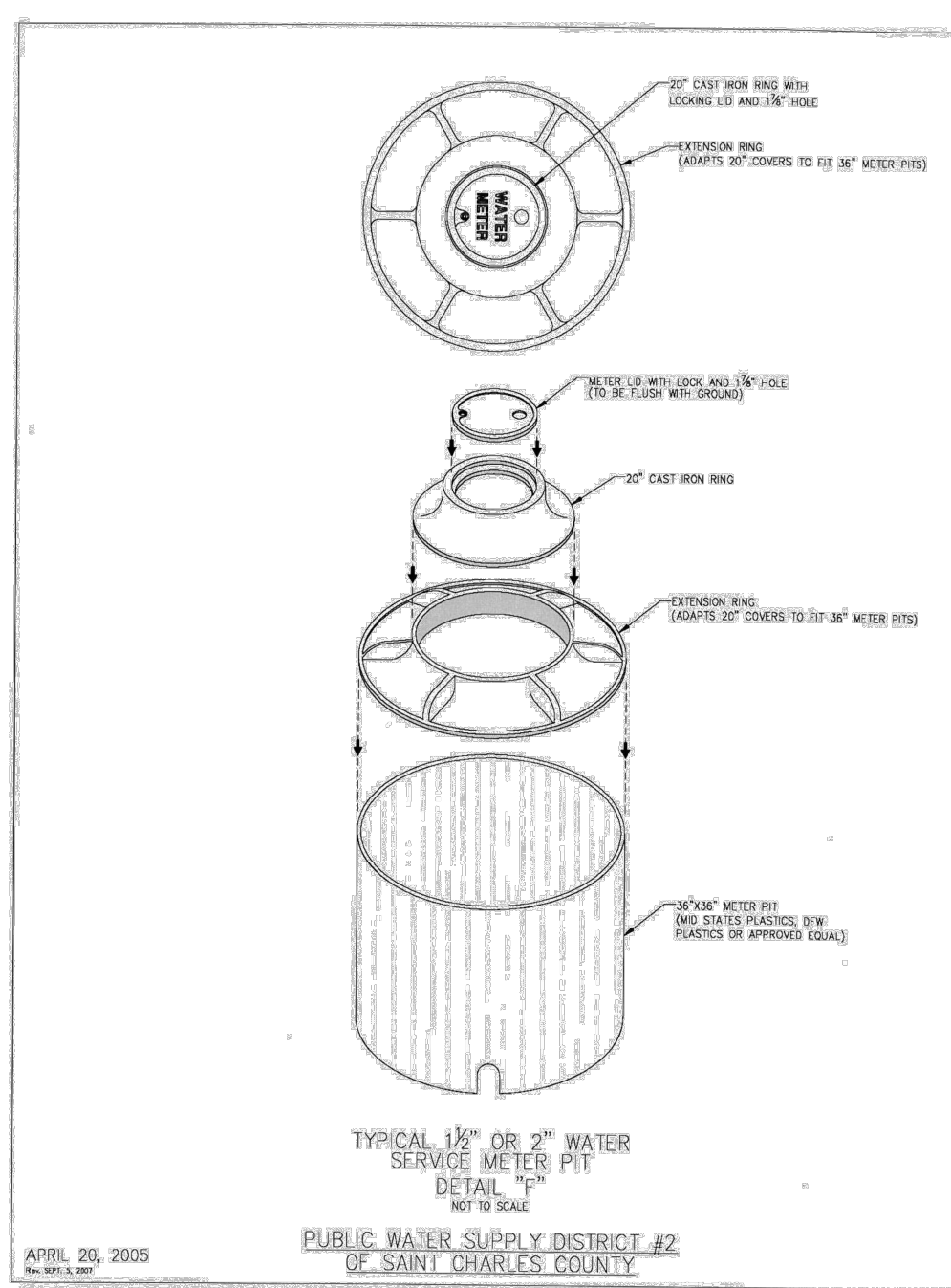
GATE VALVE DETAIL  
DETAIL "B"  
PAGE 2 OF 3



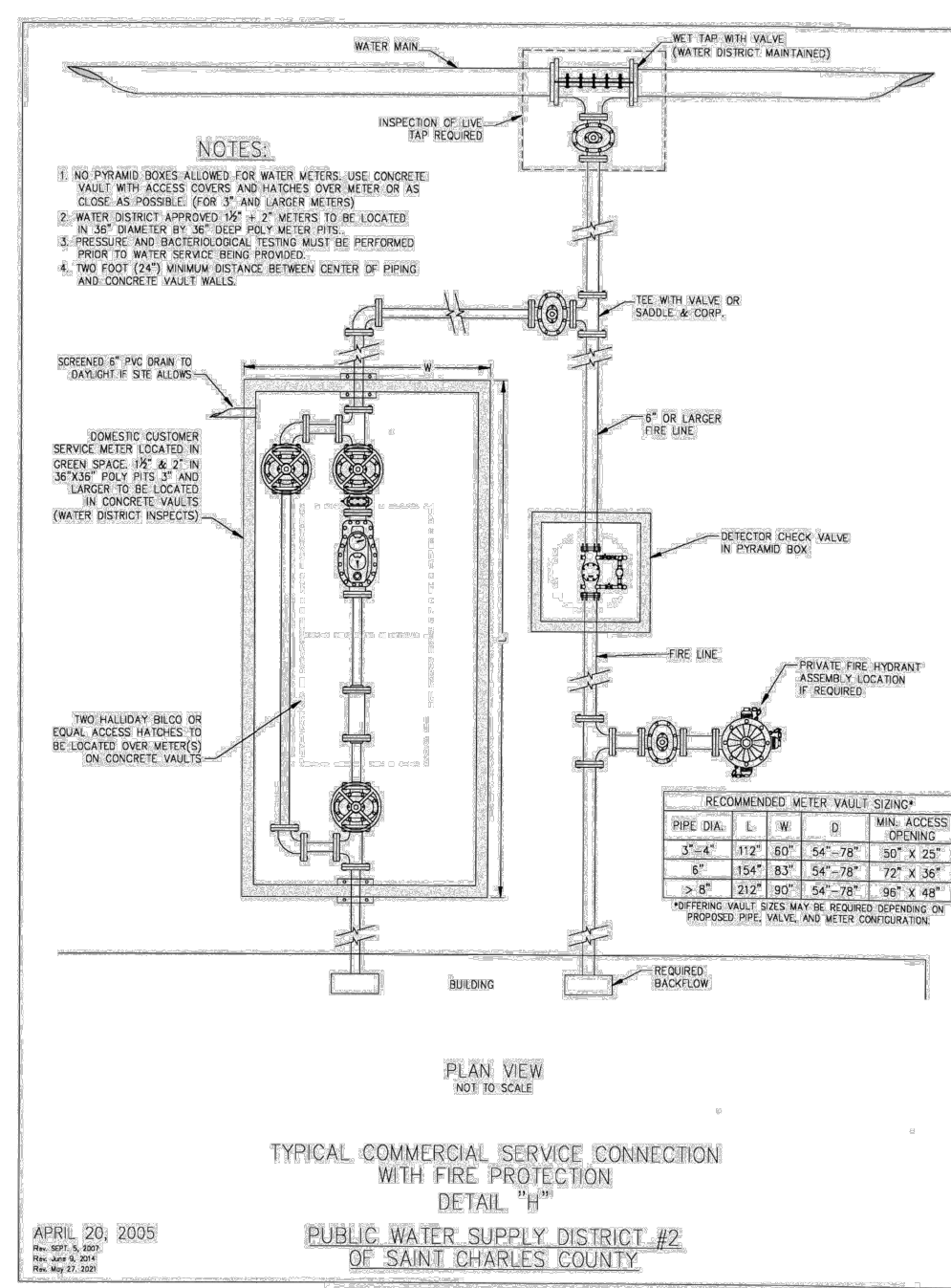
GATE VALVE DETAIL  
DETAIL "B"  
PAGE 3 OF 3



TYPICAL 1/2" & 3/4" WATER SERVICE METER PIT  
DETAIL "C"  
PAGE 1 OF 3



TYPICAL 1/2" & 3/4" WATER SERVICE METER PIT  
DETAIL "C"  
PAGE 2 OF 3



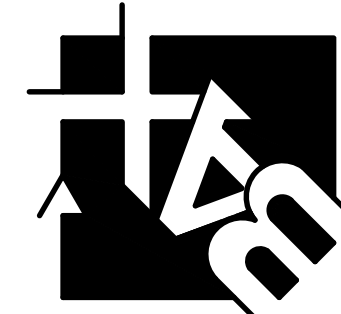
TYPICAL COMMERCIAL SERVICE CONNECTION WITH FIRE PROTECTION  
DETAIL "H"  
PAGE 1 OF 3

## PROJECT TITLE:

ASPEN ACADEMY  
740 WELKER PARKWAY  
O'FALLON, MISSOURI 63385

ENGINEERING  
PLANNING  
SURVEYING

221 Point West Blvd.  
St. Charles, MO 63301  
636-928-5552  
FAX 928-1718



REFERENCE DRAWINGS  
ONLY, ENGINEERS  
SEAL DOES NOT  
APPLY TO THESE  
DETAILS

## REVISIONS

11-25-24	dcsd & pwsd2 comments
12-18-24	city comments

## Developer / Owner:

VM MUELLER PROPERTIES LLC - MADELINE MUELLER  
3298 DYER ROAD  
O'FALLON, MISSOURI 63366  
636-544-4357 - [madeline.batthey@yahoo.com](mailto:madeline.batthey@yahoo.com)

## PWS#2 WATER DETAILS

P+Z No. # 24-0025299

Approval Date: Sept 5, 2024

City No. #

Page No.

17 of 18