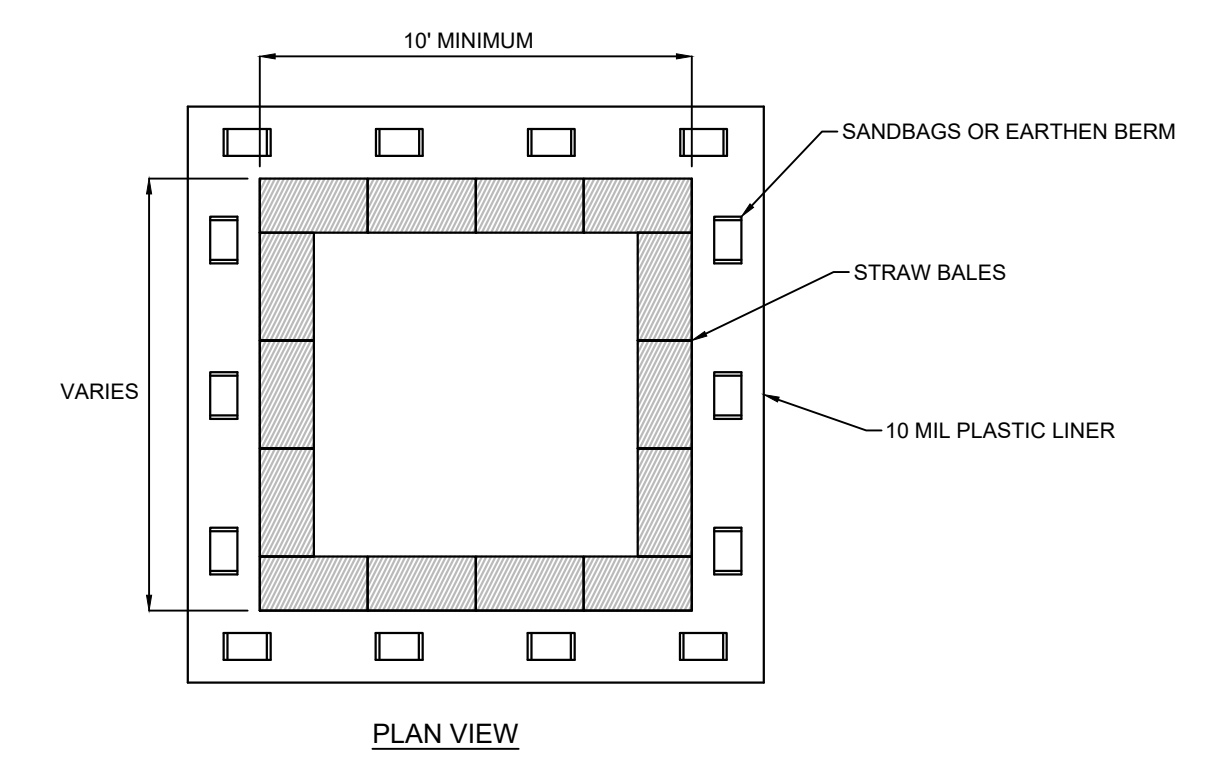
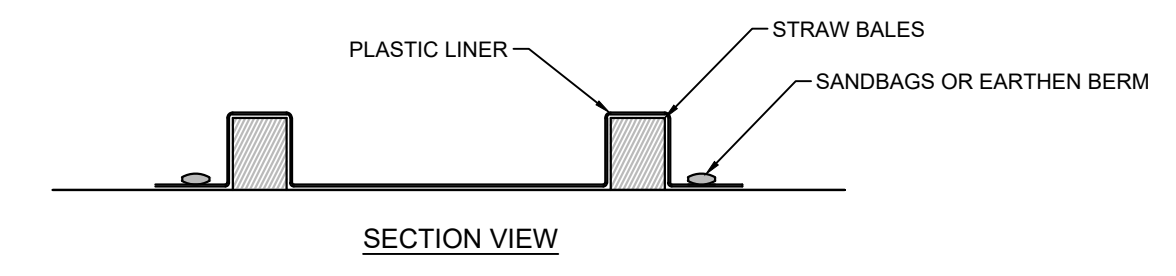
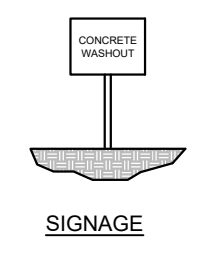


- NOTES:**
1. PLACE CURB INLET SEDIMENT BARRIERS ON GENTLY SLOPING STREET SEGMENTS OR IN SUMPS WHERE WATER CAN POND AND ALLOW SEDIMENT TO SEPARATE FROM RUNOFF.
 2. BAGS, OF EITHER BURLAP OR WOVEN GEOTEXTILE FABRIC, ARE FILLED WITH GRAVEL, LAYERED AND PACKED TIGHTLY.
 3. LEAVE ONE BAG GAP IN THE TOP ROW TO PROVIDE A SPILLWAY FOR OVERFLOW.
 4. INSPECT BARRIERS AND REMOVE SEDIMENT AFTER EACH RAINFALL EVENT. SEDIMENT AND GRAVEL MUST BE REMOVED FROM THE TRAVELED WAY IMMEDIATELY.

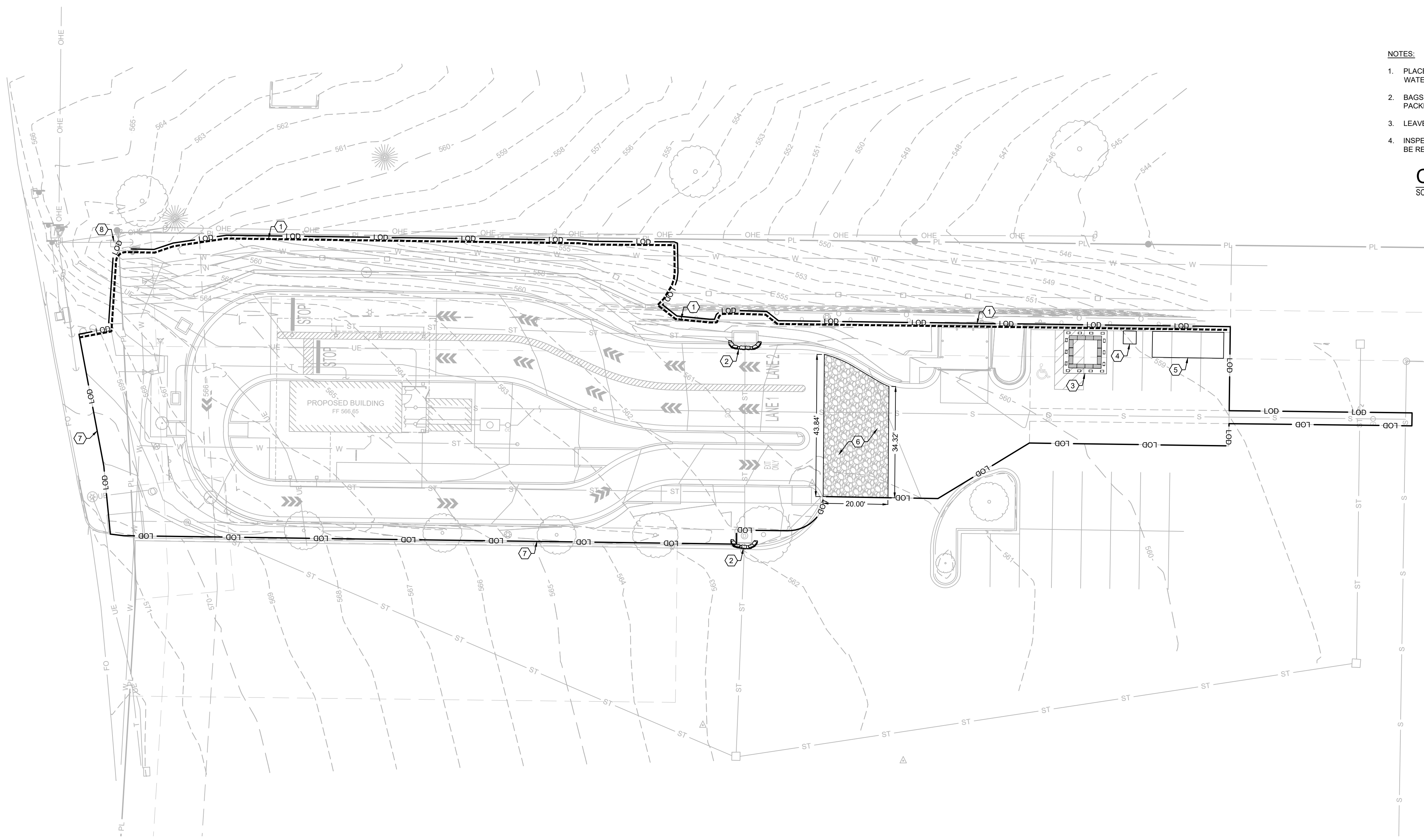
CURB INLET SEDIMENT BARRIER DETAIL
 SCALE: NONE



- NOTES:**
1. WASHOUT CONTAINMENT SHALL BE INSTALLED FOR DURATION OF CONCRETE WORK AND RETAIN CONCRETE AND OTHER WASHOUT LIQUIDS UNTIL EVAPORATION OR REMOVAL BY PUMP.
 2. CONTAINMENT SHALL BE SIZED FOR EXPECTED WASHOUT VOLUMES.
 3. AVOID PLACING NEAR STORM DRAINS, STREAMS, SINKHOLES, OUTFALLS OR OTHER LOW AREAS WHERE WATER PONDS OR FLOWS.
 4. OTHER APPROVED LEAK-PROOF CONTAINMENT IS ACCEPTABLE.
 5. TRAPS SHALL BE ROUTINELY MAINTAINED AT 75% CAPACITY AND REPLACED AS NECESSARY TO PERFORM.
 6. THE WASHOUT PIT SHALL BE COVERED BEFORE PREDICTED RAIN EVENTS TO PREVENT OVERFLOW.
 7. THE CONCRETE WASHOUT SIGN SHALL BE INSTALLED WITHIN 30FT OF THE TEMPORARY CONCRETE WASHOUT FACILITY.



CONCRETE WASHOUT
 SCALE: NONE



- KEY NOTES:**
1. INSTALL 410 L.F. ± OF COMPOST FILTER SOCK PER DETAIL SHEET C-702.
 2. INSTALL STORM INLET PROTECTION PER PER DETAIL THIS SHEET.
 3. APPROXIMATE LOCATION OF CONCRETE WASHOUT PER DETAIL THIS SHEET.
 4. APPROXIMATE LOCATION OF PORTABLE RESTROOM.
 5. APPROXIMATE LOCATION OF DUMPSTER.
 6. INSTALL TEMPORARY CONSTRUCTION ENTRANCE PER DETAIL SHEET C-702.
 7. LIMITS OF DISTURBANCE = 0.58 ACRES.
 8. PROPOSED OUTFALL.

