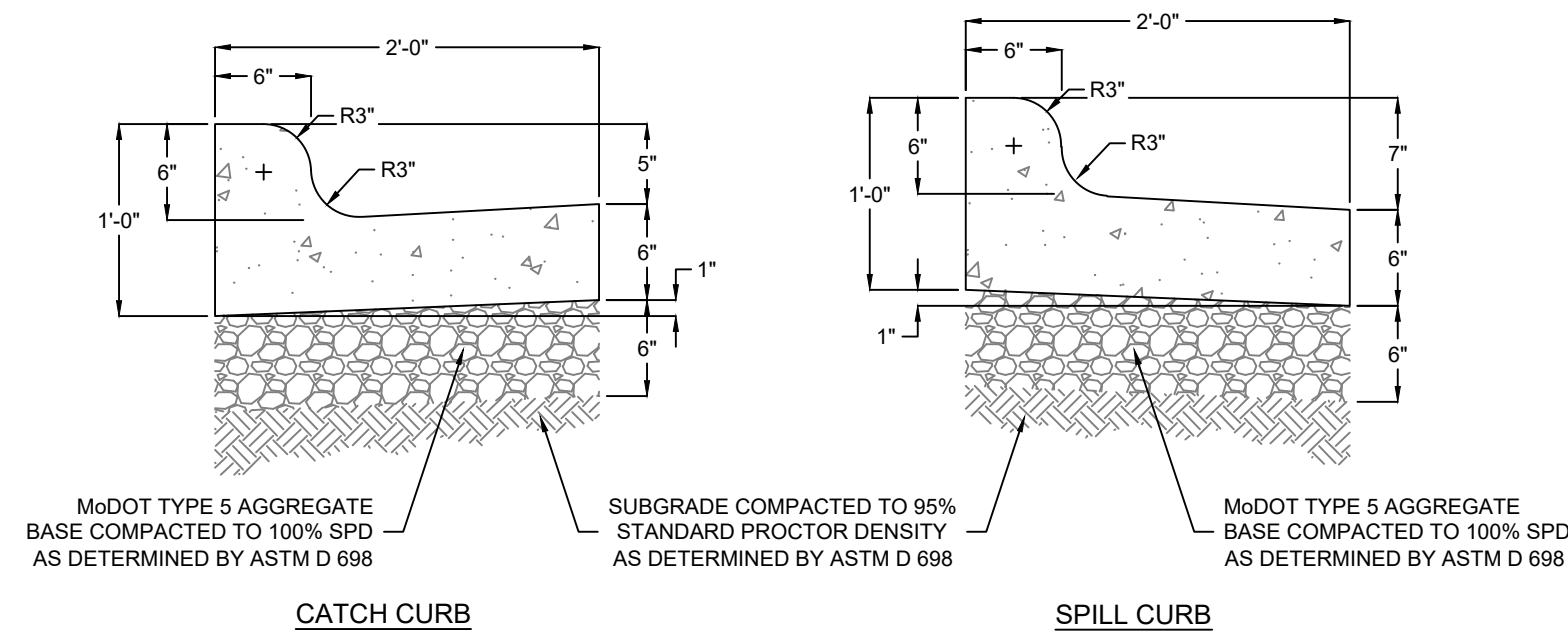


CONCRETE STOOP/WALK EDGE

SCALE: NONE



CATCH CURB

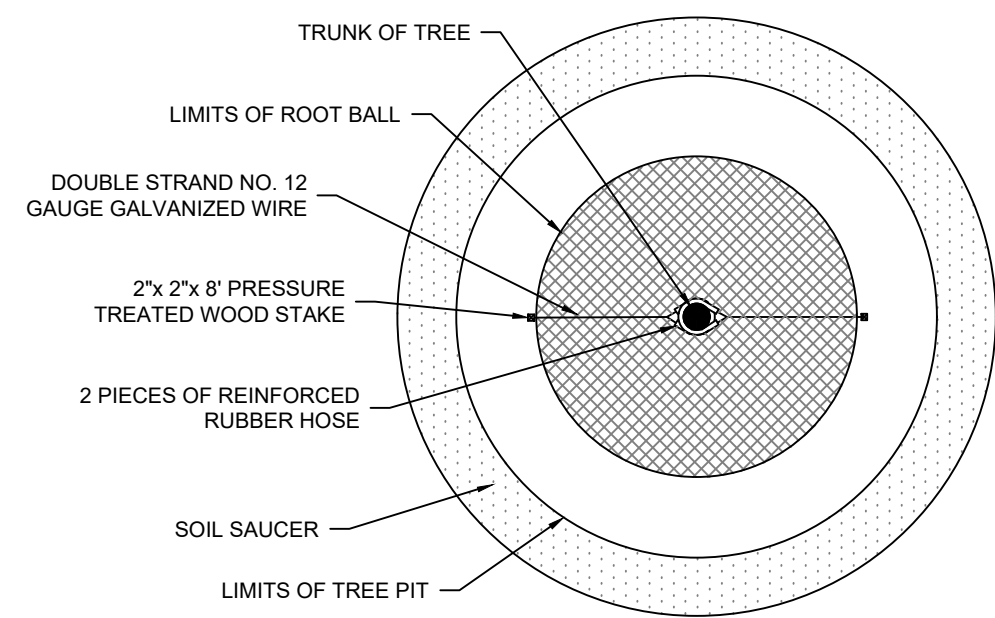
SPILL CURB

NOTES:

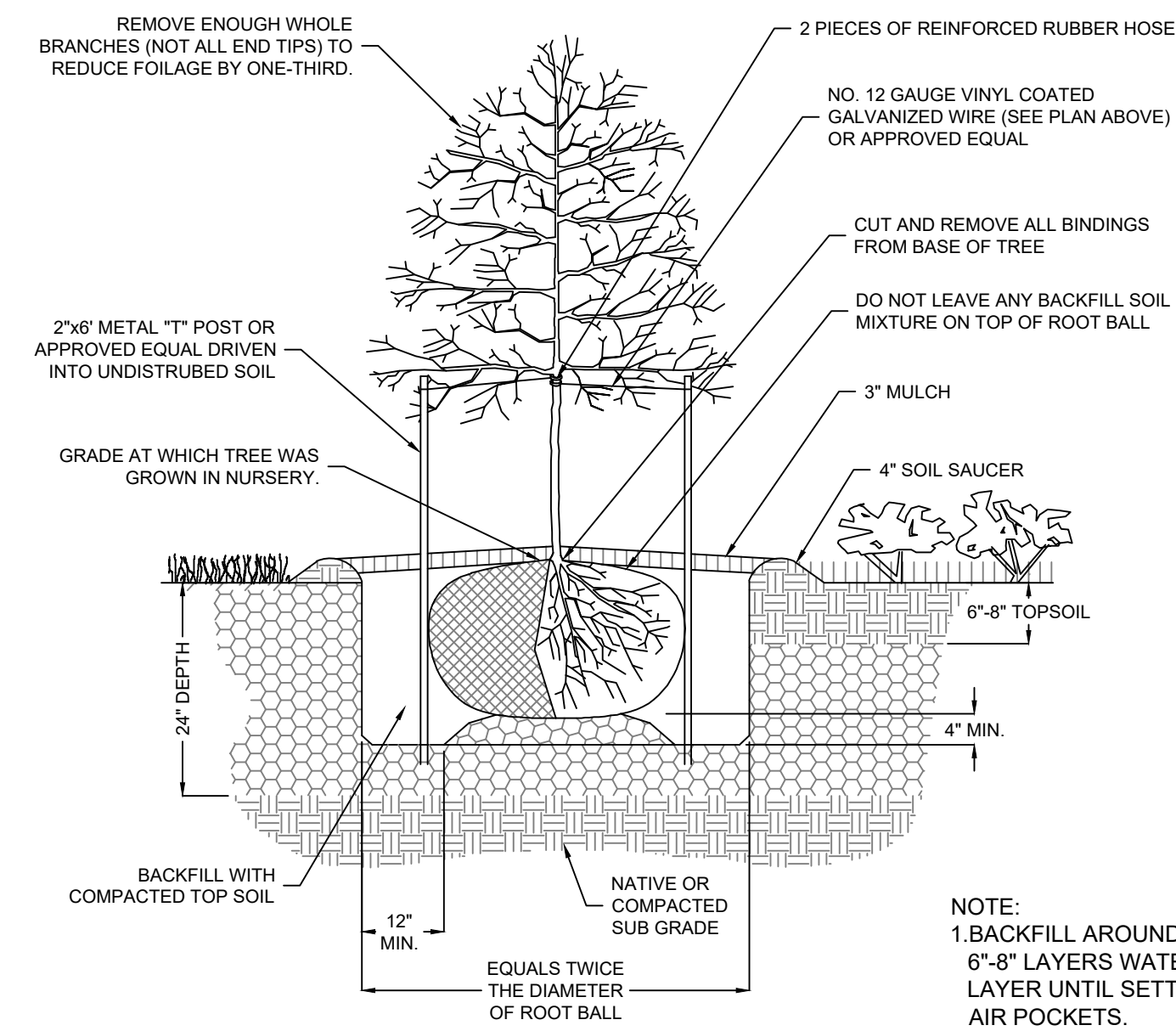
1. EXPANSION JOINTS SHALL BE FORMED BY A ONE-HALF (1/2) INCH THICK PREFORMED JOINT FILLER, CUT TO THE CONFIGURATION OF THE FULL SIZE OF THE CURB AND GUTTER SECTION AND BEING SECURED SO THAT THEY ARE NOT MOVED BY DEPOSITING AND COMPACTING THE CONCRETE AT THESE JOINTS. THE EDGES OF THESE JOINTS SHALL BE ROUNDED WITH AN EDGING TOOL ONE-EIGHTH (1/8) INCH RADIUS.
2. EXPANSION JOINTS SHALL BE PLACED WHERE CURB AND GUTTER ABUTS OTHER STRUCTURES AND AT ALL TANGENT POINTS TO CURBS. EXPANSION JOINTS SHALL NOT BE SPACED MORE THAN 50 FEET APART ON STRAIGHT RUNS FOR HAND LAID CURBS AND NOT MORE THAN 100 FEET APART FOR MACHINE LAID CURB AND GUTTER PROVIDED THAT ONE-HALF (1/2) INCH THICK JOINT FILLER IS USED. ALL JOINTS SHALL BE FORMED AT RIGHT ANGLES TO THE ALIGNMENT OF THE CURB AND GUTTER.
3. CONTRACTION JOINTS SHALL BE CONSTRUCTED BY INSERTING A REMOVABLE METAL TEMPLATE IN THE FRESH CONCRETE. THEY SHALL NOT BE SAW CUT. CONTRACTION JOINTS SHALL BE TO A DEPTH OF NOT LESS THAN ONE AND ONE-FOURTH (1-1/4) INCHES BELOW THE SURFACE AND TO A WIDTH NOT TO EXCEED THREE-EIGHTHS (3/8) INCH. CONTRACTION JOINTS SHALL BE LOCATED APPROXIMATELY 10 FEET APART.

CONCRETE CURB & GUTTER DETAIL

SCALE: NONE



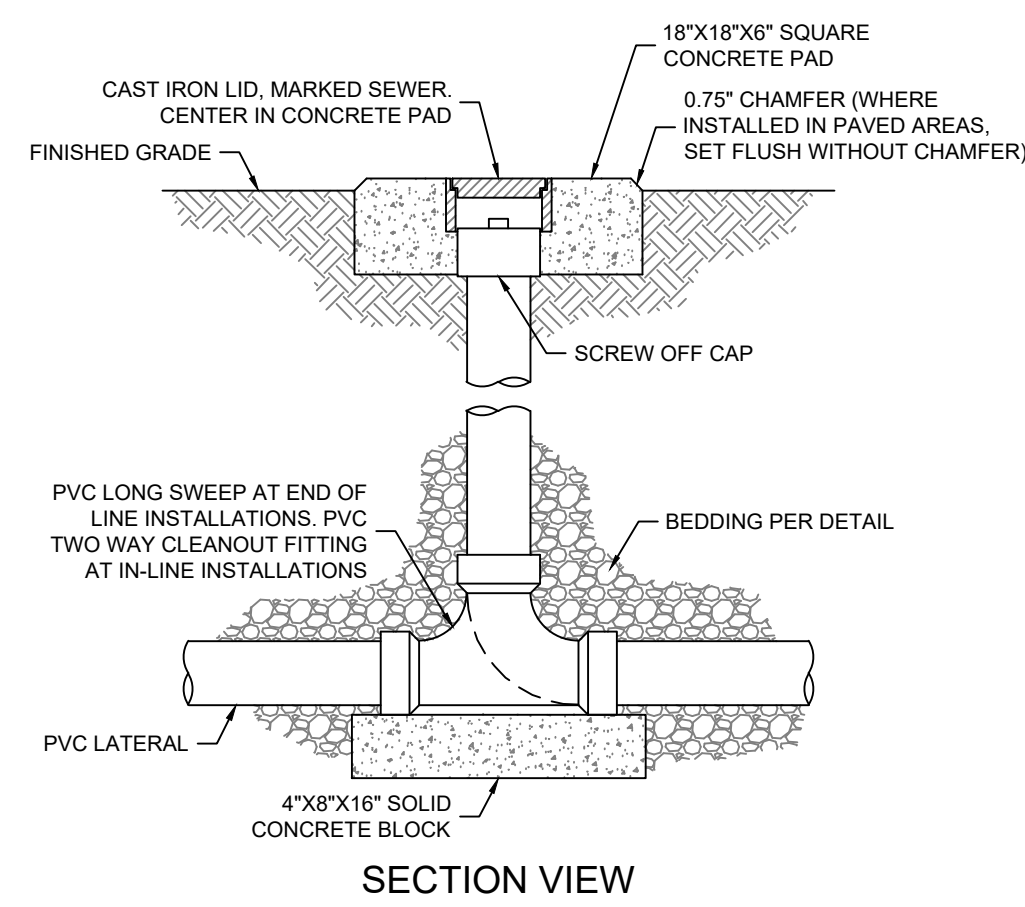
PLAN



TREE PLANTING DETAIL

SCALE: NONE

- NOTE:**
1. BACKFILL AROUND ROOT BALL IN 6"-8" LAYERS WATERING EACH LAYER UNTIL SETTLED TO AVOID AIR POCKETS.
 2. LANDSCAPE CONTRACTOR IS RESPONSIBLE FOR THE REMOVAL OF TREE STABILIZATION AT THE END OF THE SECOND GROWING SEASON.

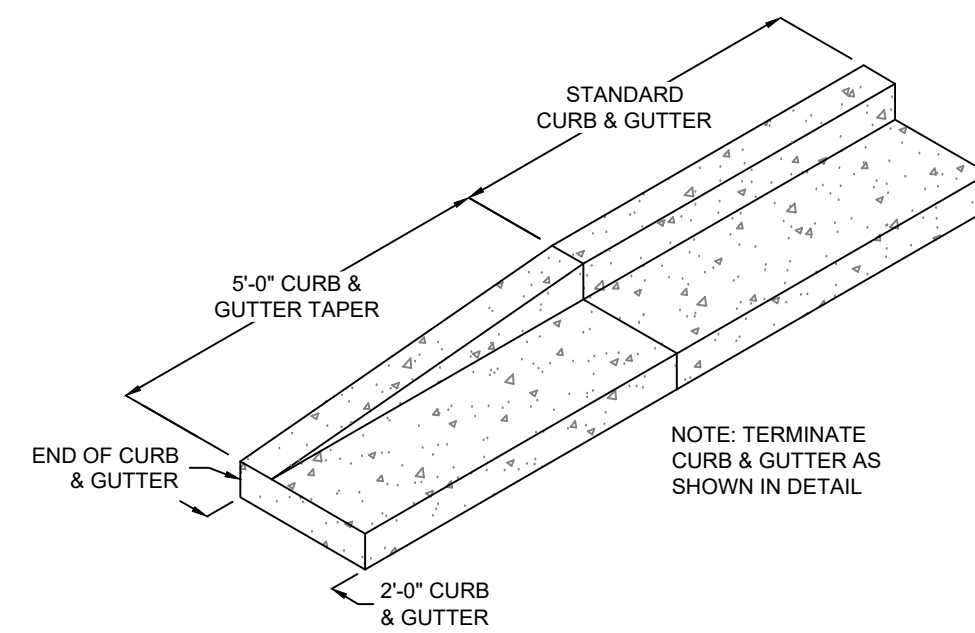


SECTION VIEW

- NOTES:**
1. SIZE AND MATERIAL OF FITTINGS AND PIPE TO MATCH THAT OF LATERAL.
 2. INSTALL CLEANOUTS AT ALL BENDS AND AT MAXIMUM 50' SPACING.

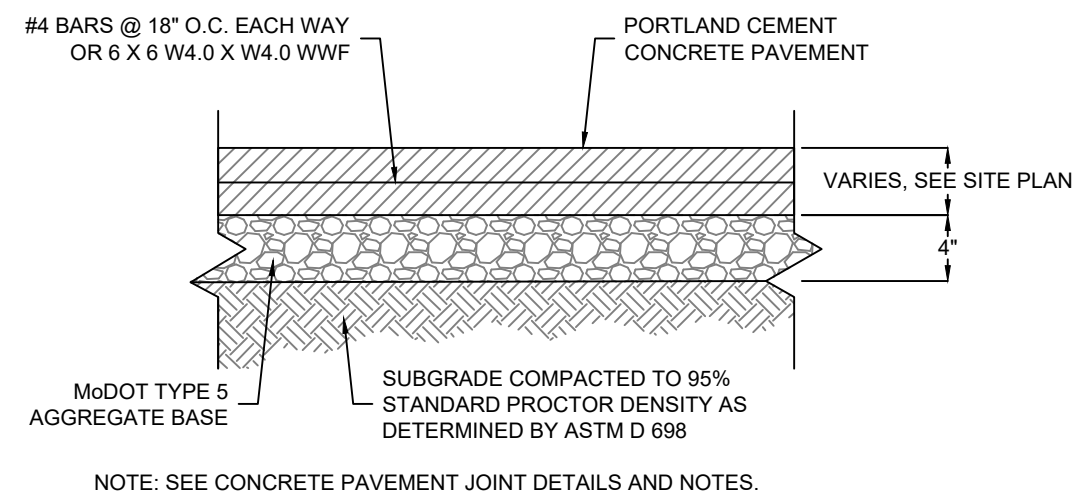
SANITARY SEWER CLEANOUT DETAIL

SCALE: NONE



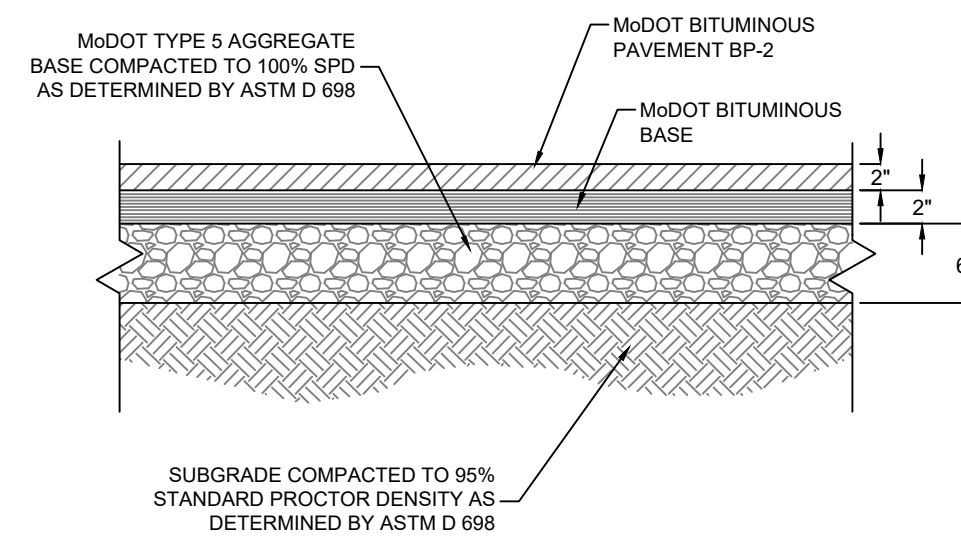
CURB TRANSITION DETAIL

SCALE: NONE



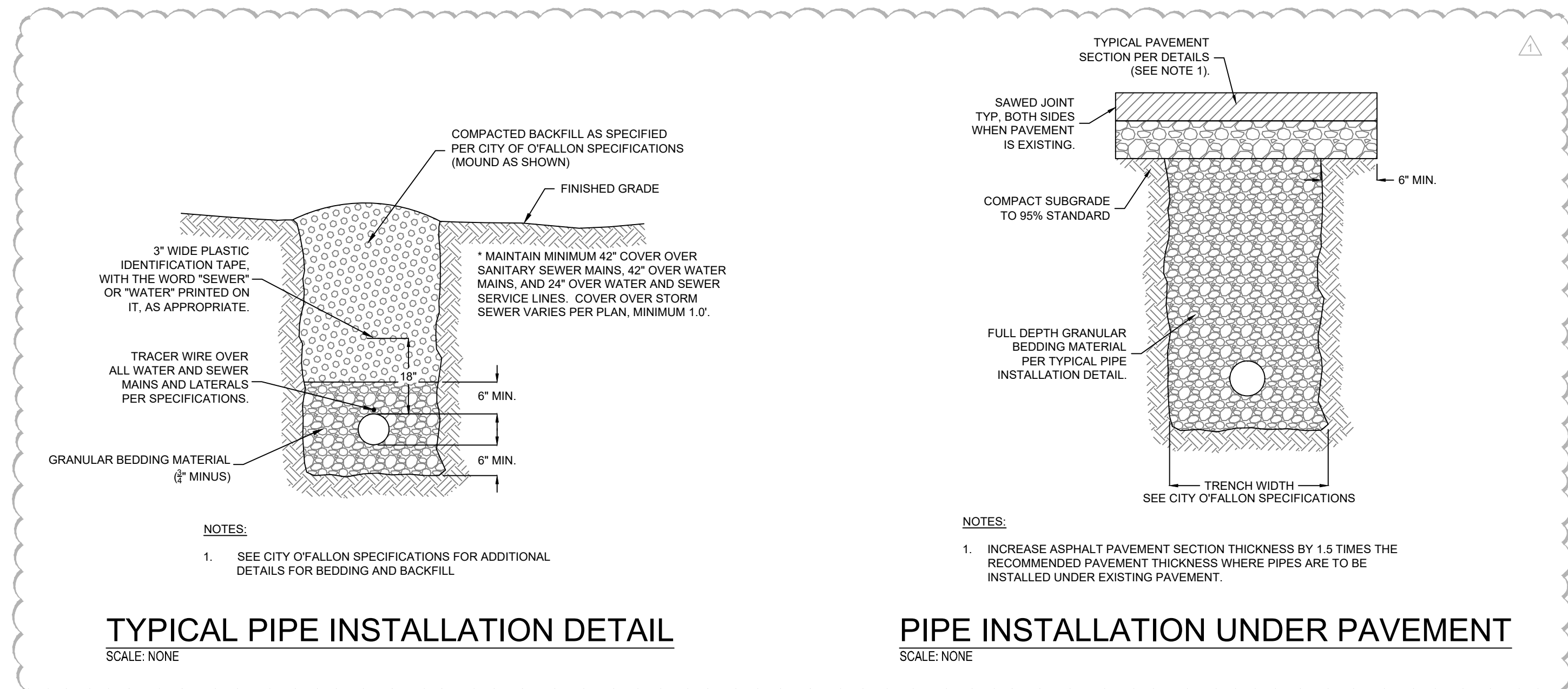
CONCRETE PAVEMENT

SCALE: NONE



ASPHALT PAVEMENT

SCALE: NONE

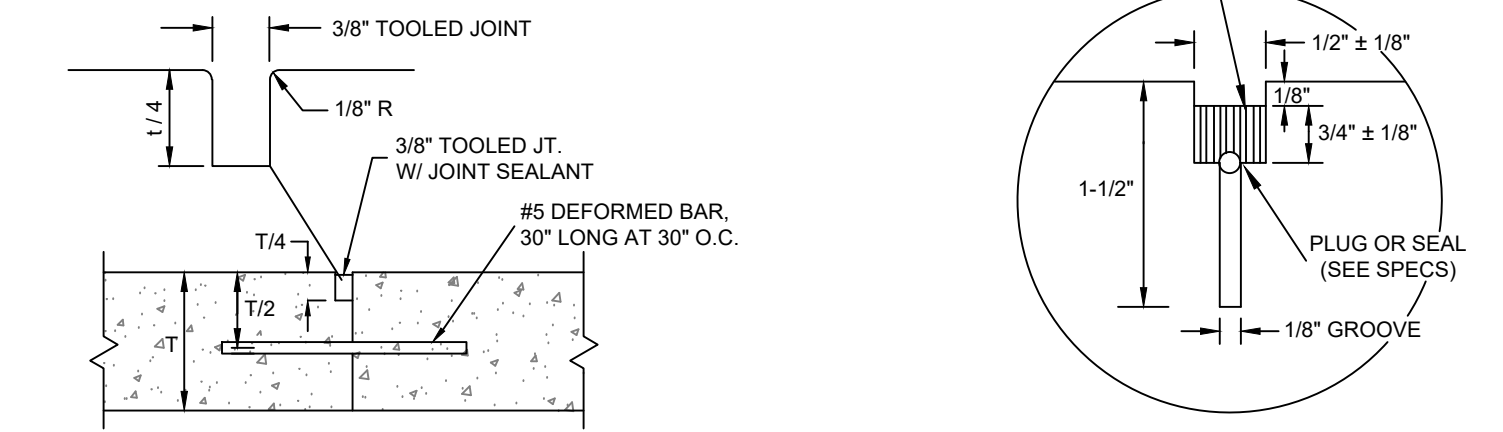


TYPICAL PIPE INSTALLATION DETAIL

SCALE: NONE

PIPE INSTALLATION UNDER PAVEMENT

SCALE: NONE



DOWELED CONSTRUCTION JOINT

CONTRACTION JOINT SEALANT DETAIL

CONCRETE JOINT NOTES:

1. CONSTRUCTION JOINTS SHALL BE PLACED AS REQUIRED BY THE CONTRACTOR.
2. EXPANSION JOINTS SHALL BE PLACED WHERE CONCRETE ABUTS STRUCTURES OR EXISTING CONCRETE PAVEMENT AND AT 45 FEET ON CENTER, EACH DIRECTION (OR AS SHOWN ON PLAN).
3. CONTRACTION JOINTS SHALL BE PLACED AT 15 FEET MINIMUM SPACING IN EACH DIRECTIONS.



SAWED CONSTRUCTION JOINT

EXPANSION JOINT

CONCRETE PAVEMENT JOINT DETAILS

SCALE: NONE

TORGERSON
DESIGN PARTNERS
 ARCHITECTURE / REAL ESTATE / DEVELOPMENT

116 NORTH 2ND AVENUE - OZARK, MO 65721 - P (417) 581-8889 - F (417) 581-9002
 ARCHITECTURAL CORPORATION MISSOURI LICENSE NUMBER: A-2010011427

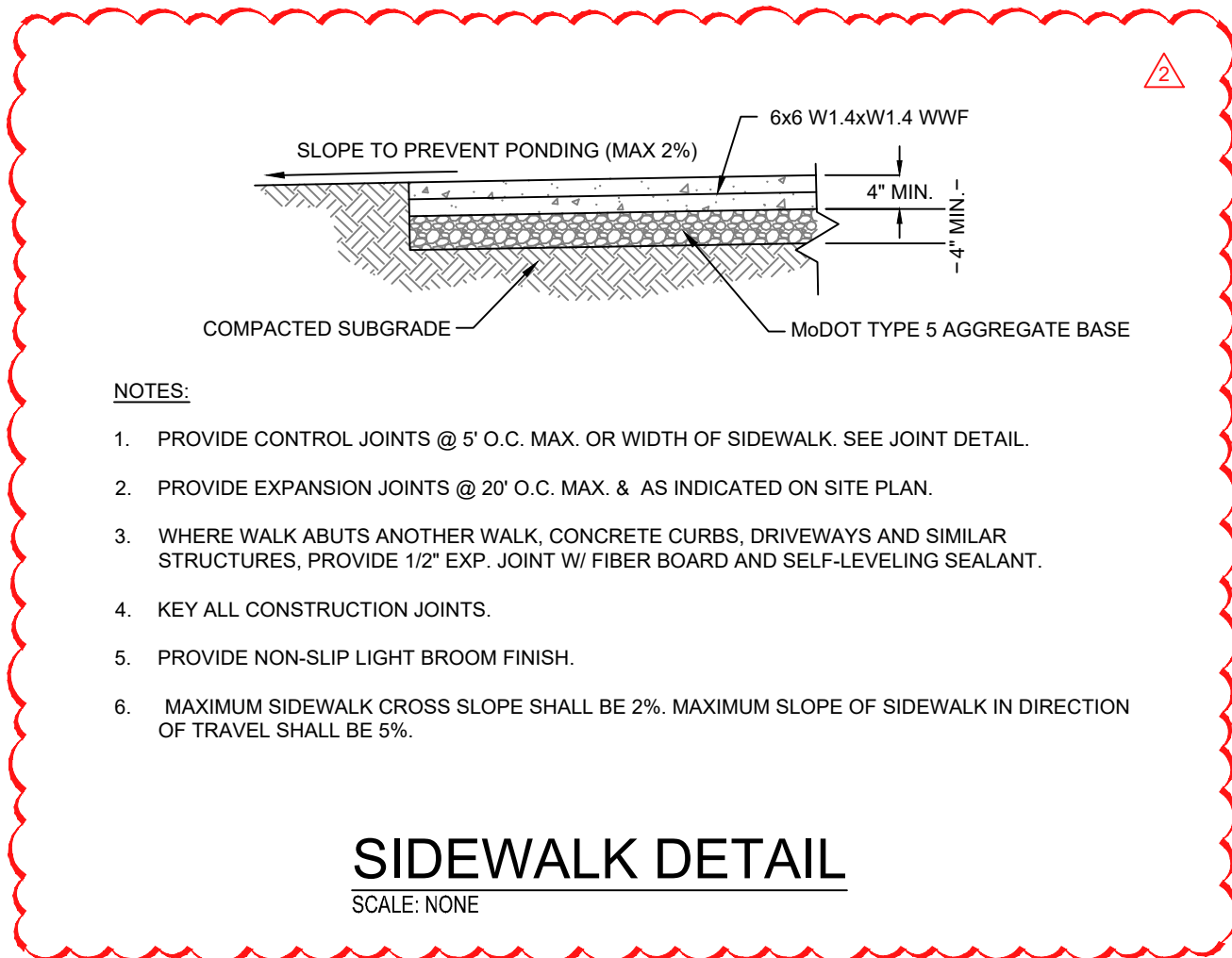
CMC
 CREATIVE MODULAR CONSTRUCTION

7 BREW COFFEE
 O'FALLON, MO
 1620 STATE HWY K
 O'FALLON, MO 63366

ENGINEER OF RECORD:
 NAME: SHAWN W. BARRY
 LICENSE NO. MO PE-2009001053

PROJECT NUMBER:
 220897BOF

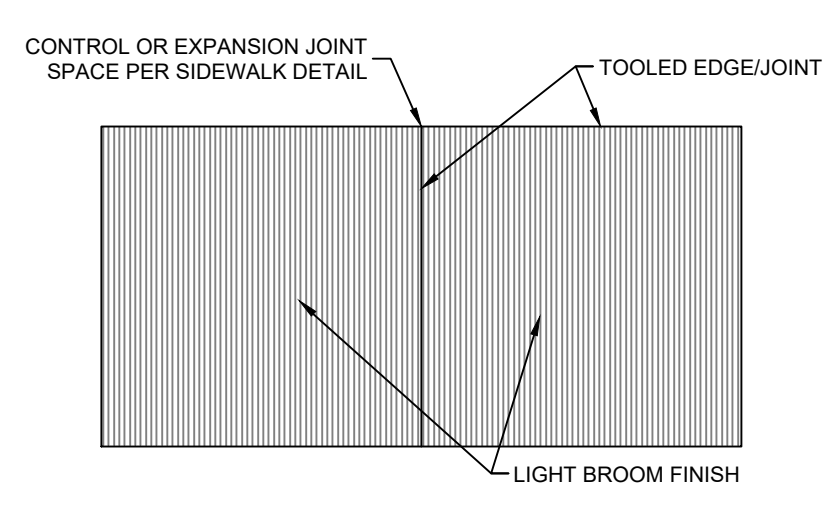
REVISION:
 09/29/2022 CITY REVIEW COMMENTS
 10/19/2022 CITY REVIEW COMMENTS



SIDEWALK DETAIL

SCALE: NONE

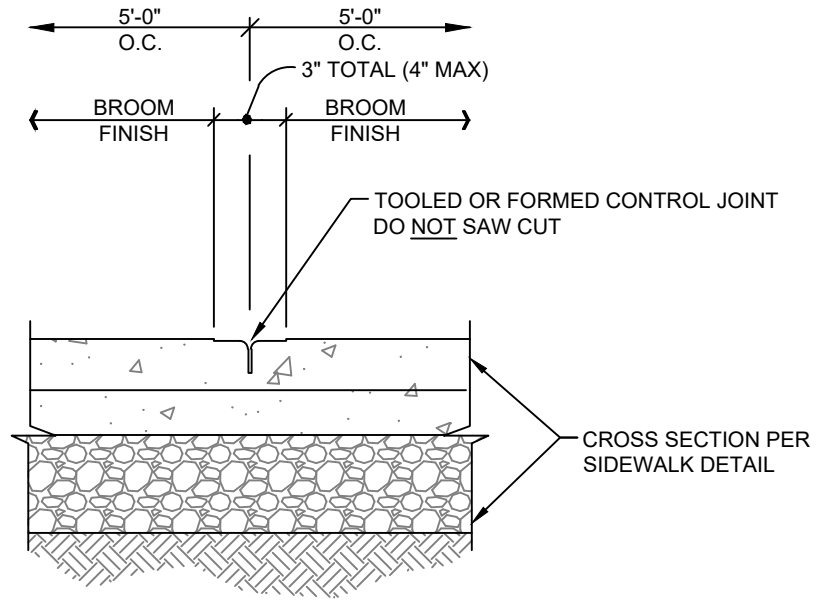
- NOTES:**
1. PROVIDE CONTROL JOINTS @ 5' O.C. MAX. OR WIDTH OF SIDEWALK. SEE JOINT DETAIL.
 2. PROVIDE EXPANSION JOINTS @ 20' O.C. MAX. & AS INDICATED ON SITE PLAN.
 3. WHERE WALK ABUTS ANOTHER WALK, CONCRETE CURBS, DRIVEWAYS AND SIMILAR STRUCTURES, PROVIDE 1/2" EXP. JOINT W/ FIBER BOARD AND SELF-LEVELING SEALANT.
 4. KEY ALL CONSTRUCTION JOINTS.
 5. PROVIDE NON-SLIP LIGHT BROOM FINISH.
 6. MAXIMUM SIDEWALK CROSS SLOPE SHALL BE 2%. MAXIMUM SLOPE OF SIDEWALK IN DIRECTION OF TRAVEL SHALL BE 5%.



SIDEWALK FINISH PLAN

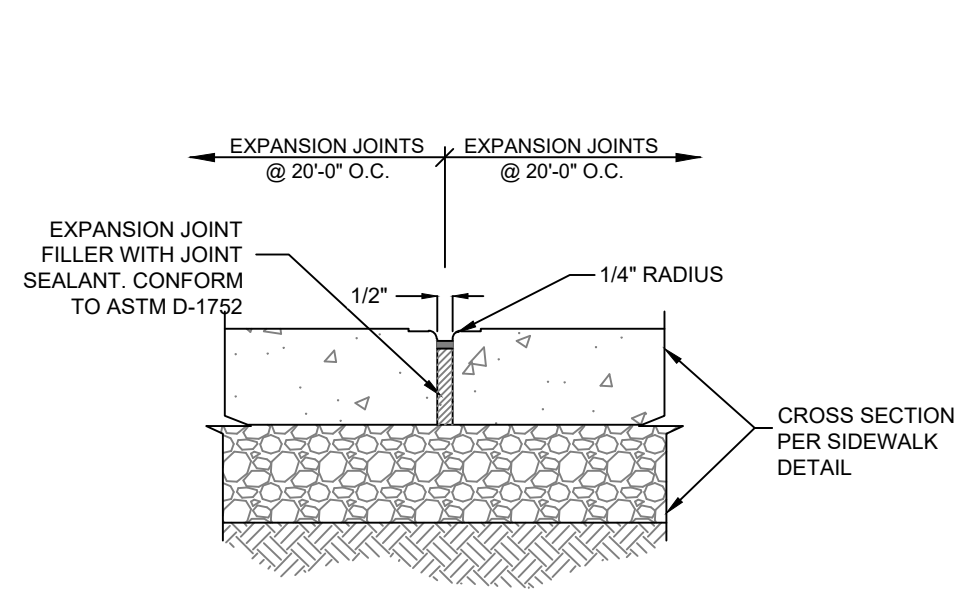
SCALE: NONE

- NOTES:**
1. CONTRACTOR SHALL TOOL EDGES AND JOINTS AS SHOWN THEN LIGHTLY BROOM FINISH ENTIRE SIDEWALK SURFACE.



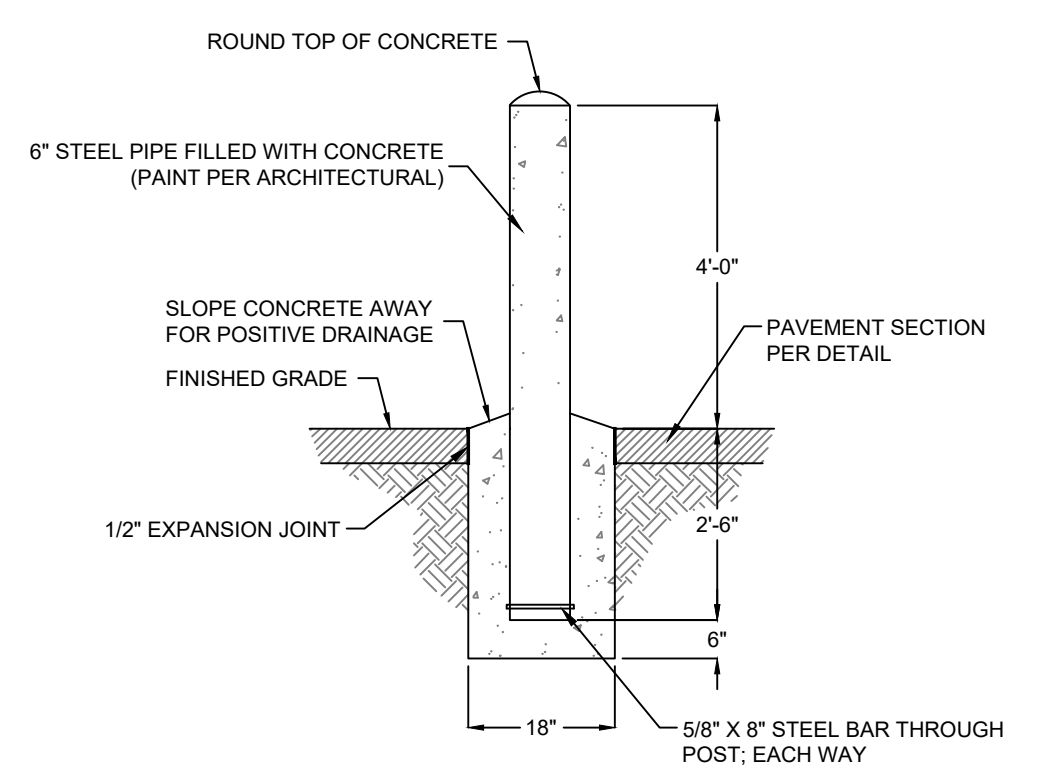
SIDEWALK CONTROL JOINT

SCALE: NONE



SIDEWALK EXPANSION JOINT

SCALE: NONE



PIPE BOLLARD

SCALE: NONE

TOTH & ASSOCIATES
 1550 E. REPUBLIC ROAD
 SPRINGFIELD, MO 65804
 Ph: 417-888-0645 Fax: 417-888-0657
 www.tothassociates.com
 CERTIFICATE OF AUTHORITY:
 MO# E-2004004242-D
 © 2022 Toth and Associates, Inc.

C-701
 DETAILS
 DATE: JULY 22, 2022