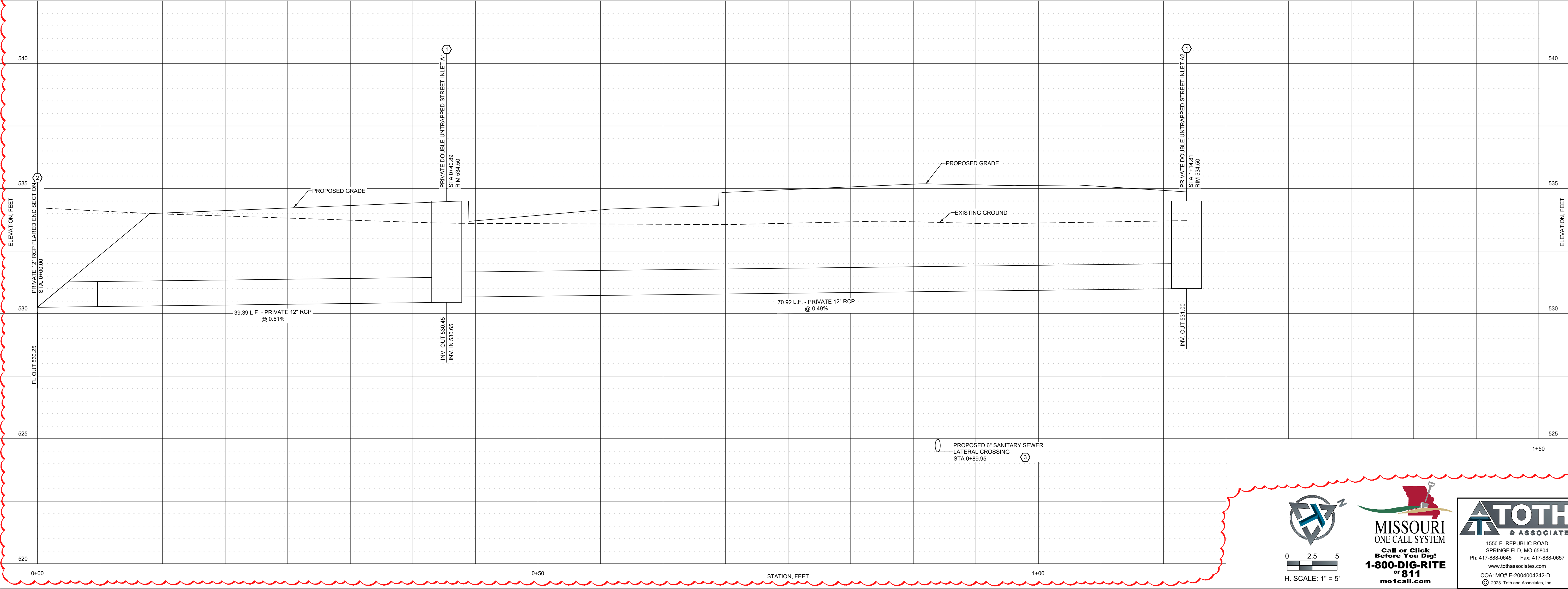


- KEY NOTES:**
- ① PRIVATE DOUBLE UNTRAPPED STREET INLET PER METROPOLITAN ST. LOUIS SEWER DISTRICT STANDARD DETAIL SHEETS 37 AND 43, PER DETAIL SHEET C7.4.
 - ② INSTALL PRIVATE 12" RCP FLARED END SECTION WITH RIP-RAP OUTLET PROTECTION PER DETAIL SHEET C7.4.
 - ③ APPROXIMATE SANITARY SEWER LATERAL CROSSING.

PRIVATE STORM SEWER LINE A - STATION 0+00.00 TO 1+14.81



ENGINEER OF RECORD:
 NAME: SHAWN W. BARRY
 LICENSE NO. MO #PE-2009001053

PROJECT NUMBER:
 23031-7BOM2

REVISION:

- ① 07/10/2023 CITY REVIEW COMMENTS
- ② 07-31-2023 CITY REVIEW COMMENTS

**7 BREW COFFEE
 O'FALLON, MO #2**

3600 MONTICELLO DR.
 O'FALLON, MO 63304

0 2.5 5
H. SCALE: 1" = 5'

MISSOURI
ONE CALL SYSTEM
Call or Click
Before You Dig!
1-800-DIG-RITE
or **811**
mo1call.com

TOth & ASSOCIATES
1550 E. REPUBLIC ROAD
SPRINGFIELD, MO 65804
Ph: 417-888-0645 Fax: 417-888-0657
www.tothassociates.com
COA: MO# E-200404242-D
© 2023 Toth and Associates, Inc.

C4.3
STORMWATER PLAN

DATE: MAY 2, 2023