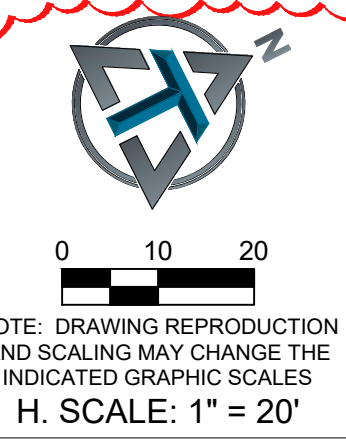


KEY NOTES:
 ① PROPOSED OUTFALL



MISSOURI
 ONE CALL SYSTEM
 Call or Click
 Before You Dig!
1-800-DIG-RITE
 or **811**
 mo1call.com

TOTH & ASSOCIATES
 1550 E. REPUBLIC ROAD
 SPRINGFIELD, MO 65804
 Ph: 417-888-0645 Fax: 417-888-0657
 www.tothassociates.com
 COA: MO# E-2004004242-D
 © 2023 Toth and Associates, Inc.

C4.5
 POST-DRAINAGE
 AREA MAP
 DATE: MAY 2, 2023

KINETIC
 DESIGN + DEVELOPMENT
 2101 W CHESTERFIELD BLVD, SUITE A101 • SPRINGFIELD, MO 65807 • P (417) 530-4321
 ARCHITECTURAL CORPORATION, MISSOURI LICENSE NUMBER A-201001427



ENGINEER OF RECORD:
 NAME: SHAWN W. BARRY
 LICENSE NO. MO #PE-2009001053

PROJECT NUMBER:
 23031-7BOM2

REVISION:
 ① 07/31/2023 CITY REVIEW COMMENTS

7 BREW COFFEE
 O'FALLON, MO #2

3600 MONTICELLO DR.
 O'FALLON, MO 63304