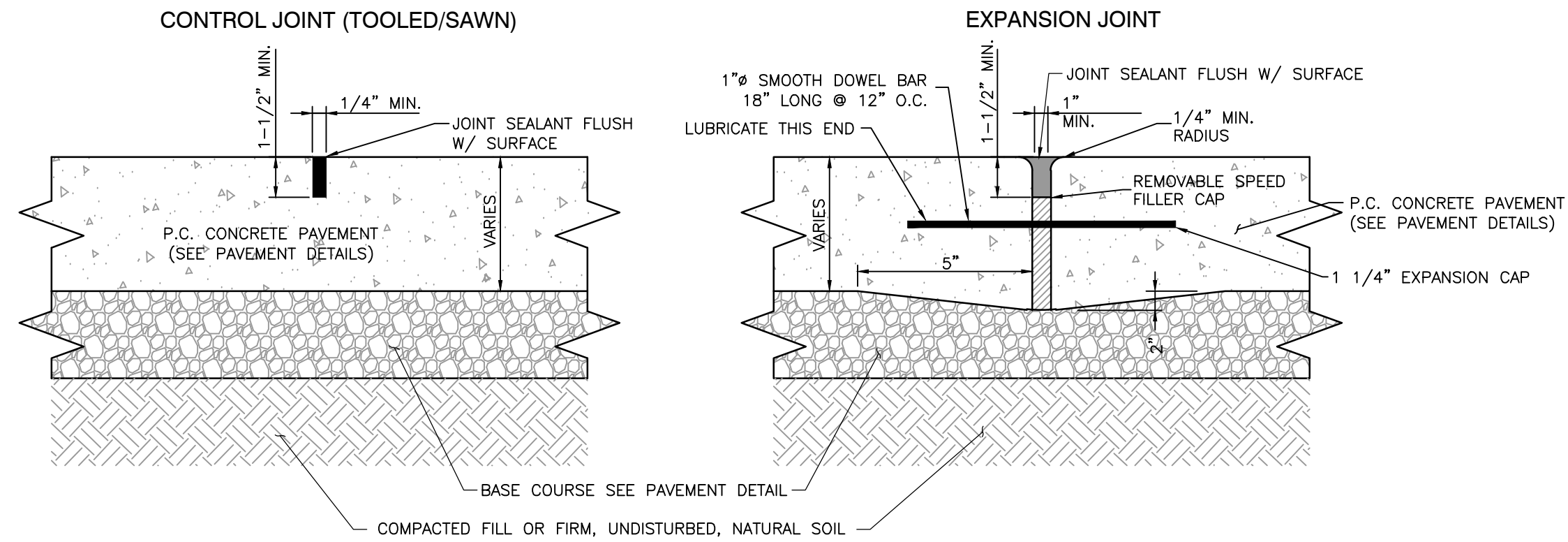
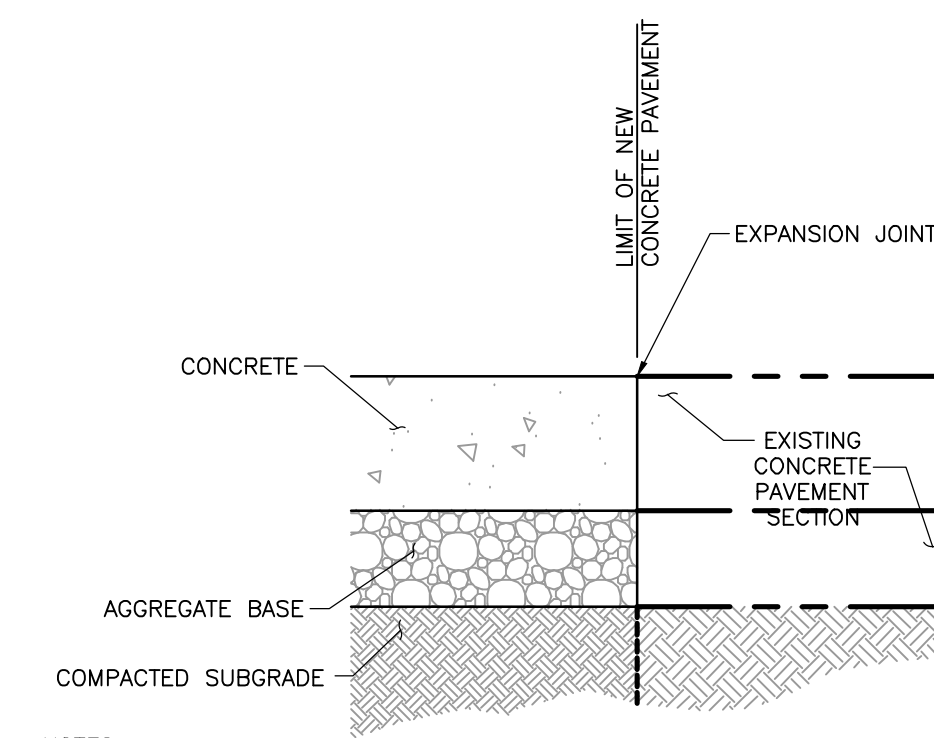


DETAIL #01
CONCRETE PAVEMENT
N.T.S.

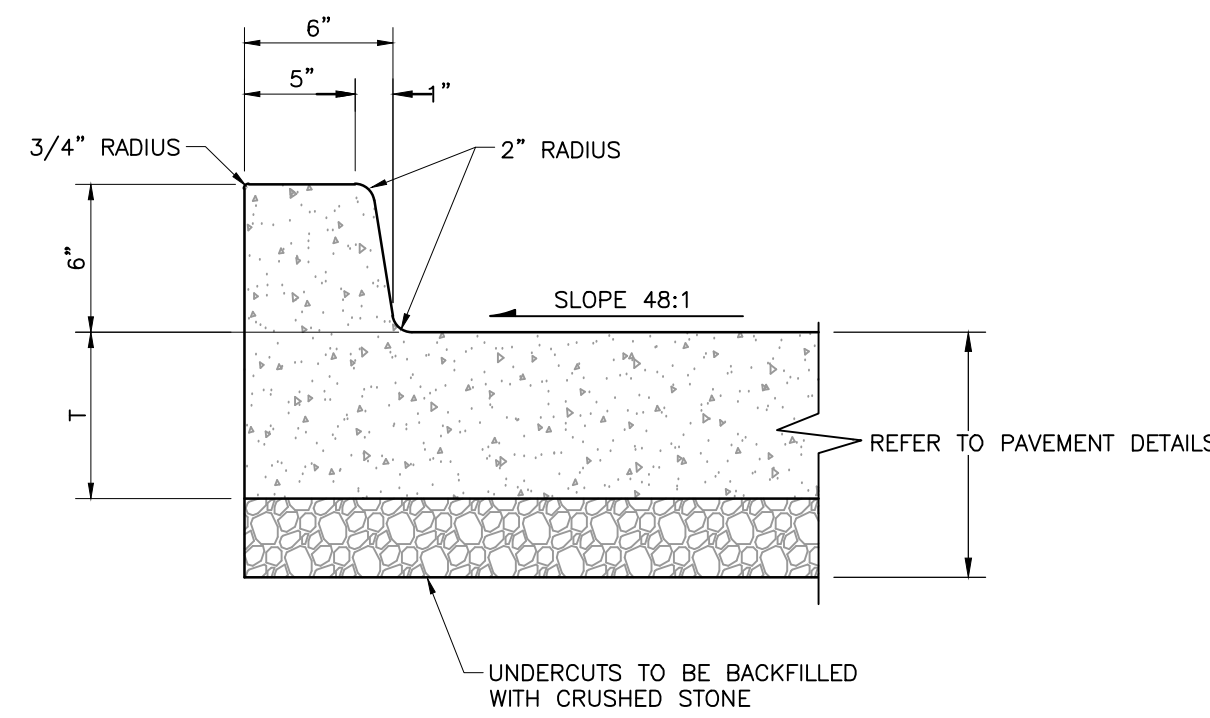


DETAIL #02
CONCRETE PAVEMENT JOINT
N.T.S.

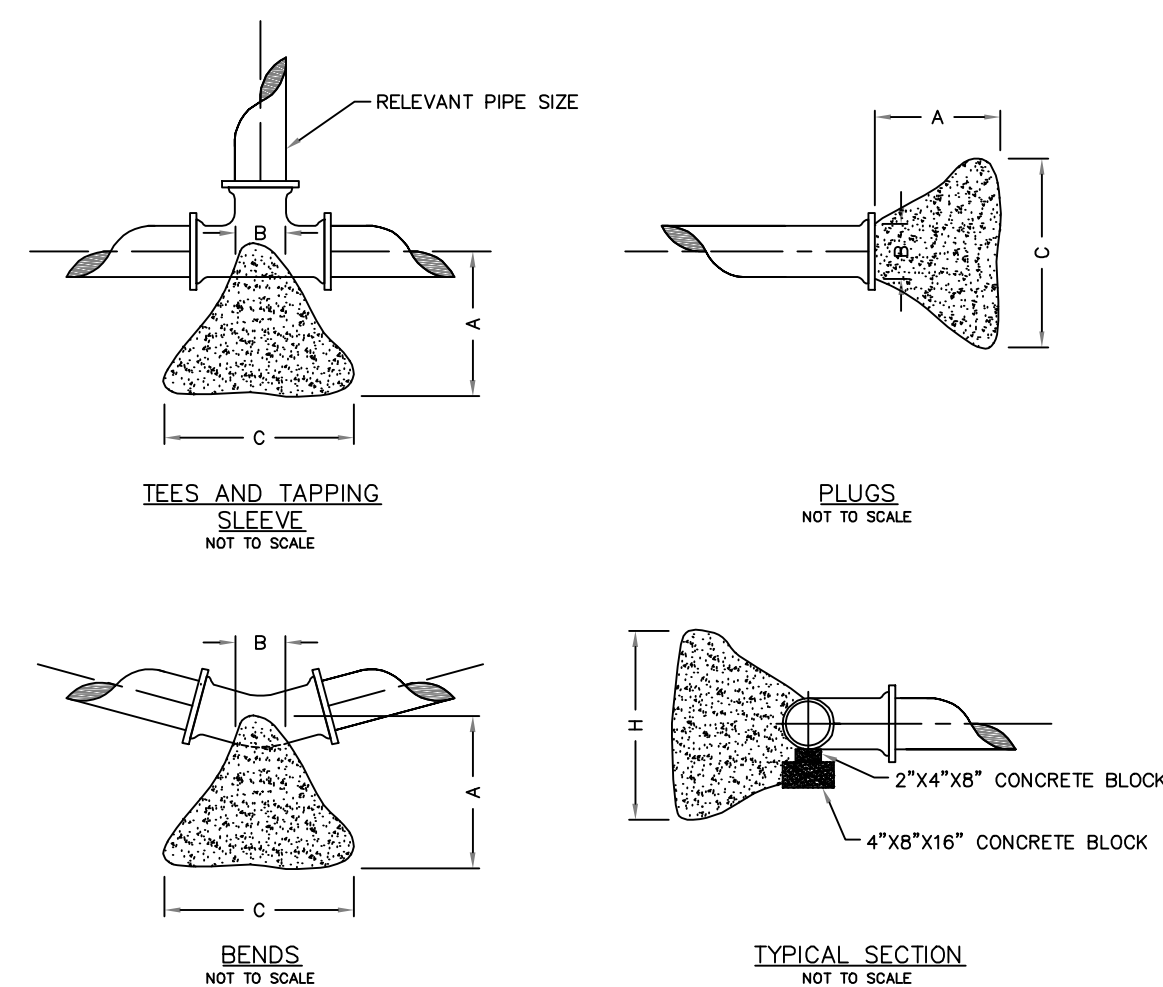


NOTES:
1. REFER TO GEOTECHNICAL REPORT BY SCI ENGINEERING DATED JANUARY 2023 FOR FURTHER SPECIFICATIONS AND/OR RECOMMENDATIONS.
2. WHERE APPLICABLE, REPAINT ALL LANE MARKINGS, PARKING STALLS, ETC. WITH PAVEMENT GRADE SOLID WHITE PAINT 4" WIDE.

DETAIL #03
PAVEMENT SAWCUT
N.T.S.



DETAIL #04
INTEGRAL CONCRETE CURB
N.T.S.



THRUST BLOCK DIMENSIONS - INCHES

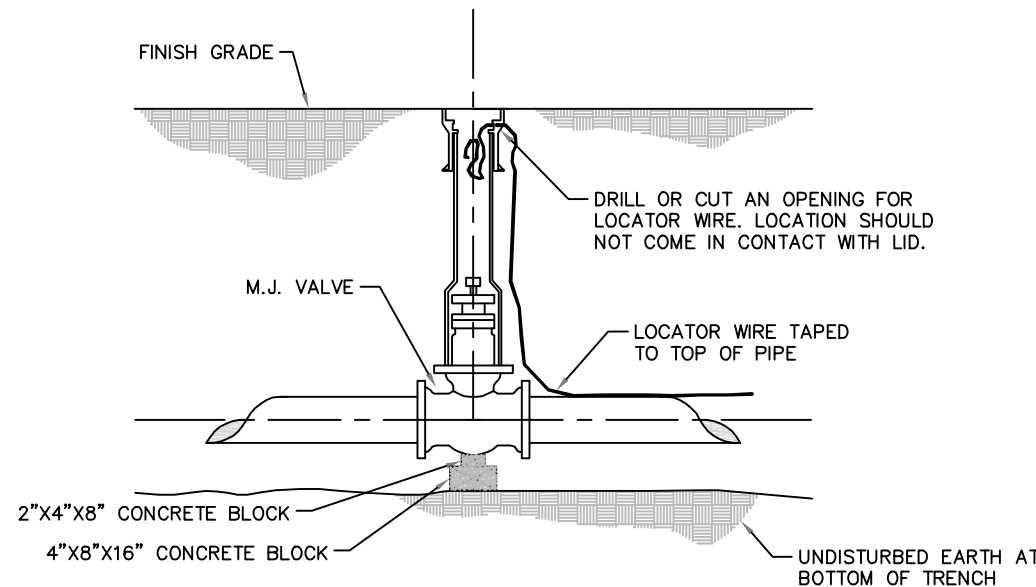
PIPE DIA.	ALL FTGS.		TEE PLUG TAPPING		90 DEGREE BEND		45 DEGREE BEND		22-1/2 BEND		11-1/4 BEND	
	A	B	C	H	C	H	C	H	C	H	C	H
4	14	4	24	12	26	15	18	12	12	12	12	12
6	16	6	36	18	36	24	30	18	24	12	12	12
8	20	8	36	30	42	36	36	24	24	18	18	12
10	20	10	48	36	66	36	36	36	28	24	18	18
12	24	12	68	36	82	42	52	36	40	24	28	18

NOTE
FOR FITTINGS LARGER THAN 12", SPECIAL RESTRAINT DESIGNS ARE REQUIRED.

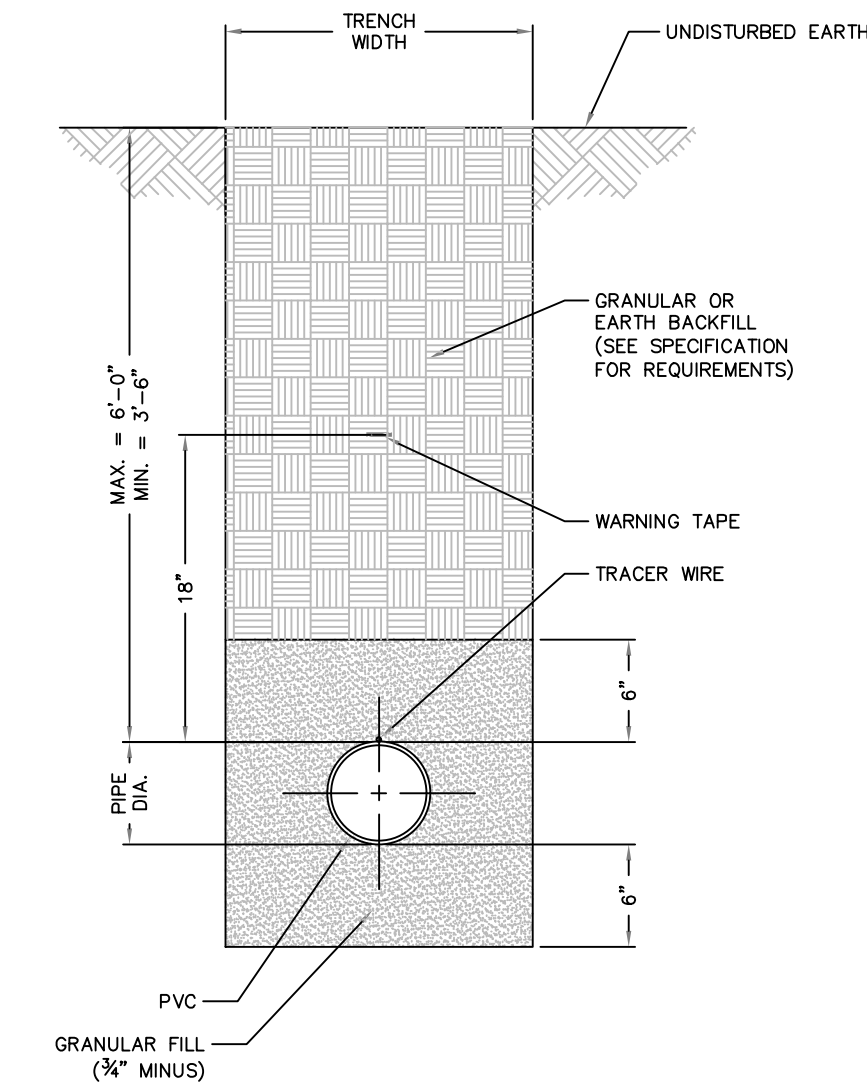
HORIZONTAL THRUST BLOCKING
DETAIL "C"

DETAIL #06
THRUST BLOCKS
N.T.S.

Buffalo box is an acceptable product to use.
Tyler 562-S and 564-S are acceptable products.



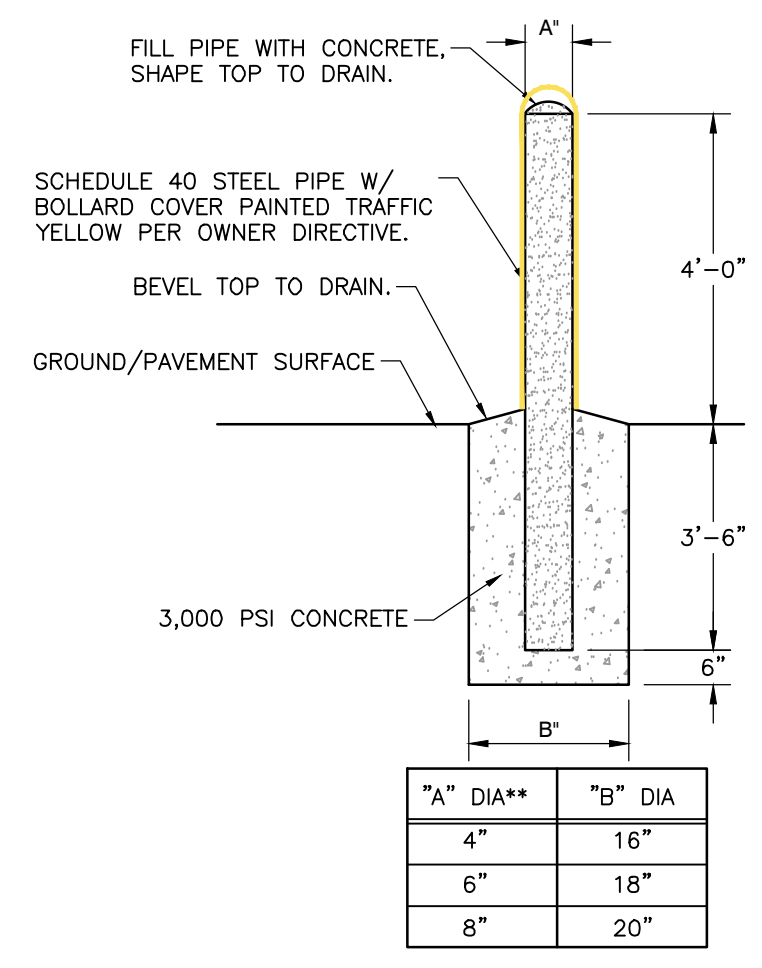
DETAIL #07
GATE VALVE
N.T.S.



NOTES
1) SEE SPECIFICATIONS FOR ADDITIONAL DETAILS FOR BEDDING AND BACKFILL.

TYPICAL TRENCH SECTION
FOR PVC PIPE
NOT TO SCALE
DETAIL "A"
PAGE 1 OF 2

DETAIL #08
TYPICAL TRENCH SECTION FOR PVC PIPE
N.T.S.



DETAIL #05
PIPE BOLLARD
N.T.S.

"A" DIA**	"B" DIA
4"	16"
6"	18"
8"	20"

**REFER TO PLAN FOR SIZE

STL WHOLESAL
CONSTRUCTION PLANS
CONSTRUCTION DETAILS

A TRACT OF LAND BEING ADJUSTED LOT 14 OF LONESTAR INDUSTRIAL PARK PLAT ONE AS RECORDED ON PLAT BOOK 48, PAGE 315, TOWNSHIP 47 NORTH, RANGE 2 EAST, CITY OF FALLON, ST. CHARLES COUNTY, MISSOURI

Civil & Environmental Consultants, Inc.
3000 Little Hills Expressway · Suite 102 · St. Charles, MO 63301
314-656-4566 · 866-250-3679
www.cecinc.com

WTS
KAS
KAS
KAS

DRAWN BY:
CHECKED BY:
APPROVED BY:

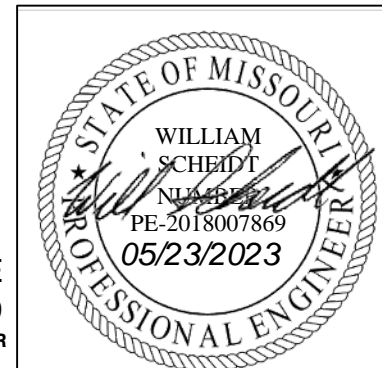
PROJECT NO: 320-910001

Owner:
Pinkerton Properties LLC
801 Texas Court
O'Fallon MO 63366

City of O'Fallon Site Plan

P+Z No: 22-012944
Approval Date:
MARCH 2, 2023
City No. 23-003172

Page No.
C800



WILLIAM SCHEIDT, PE
2018007869
PROFESSIONAL CIVIL ENGINEER