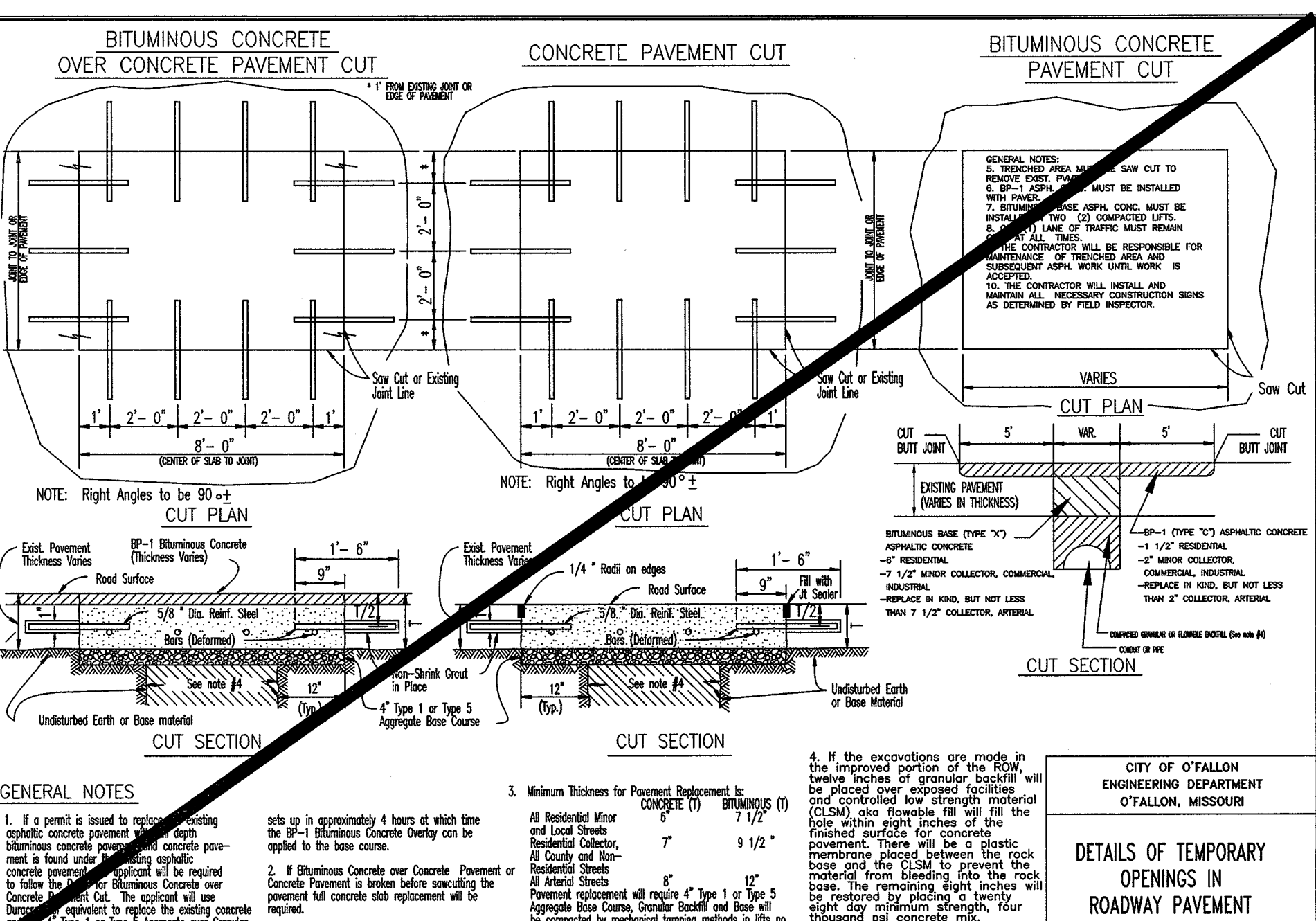
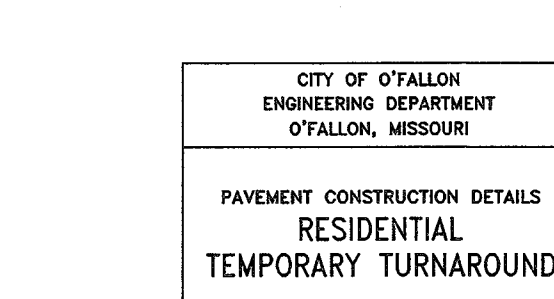
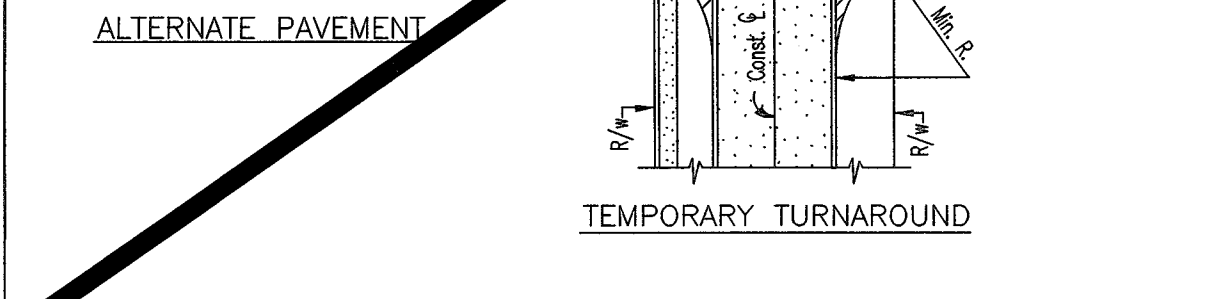
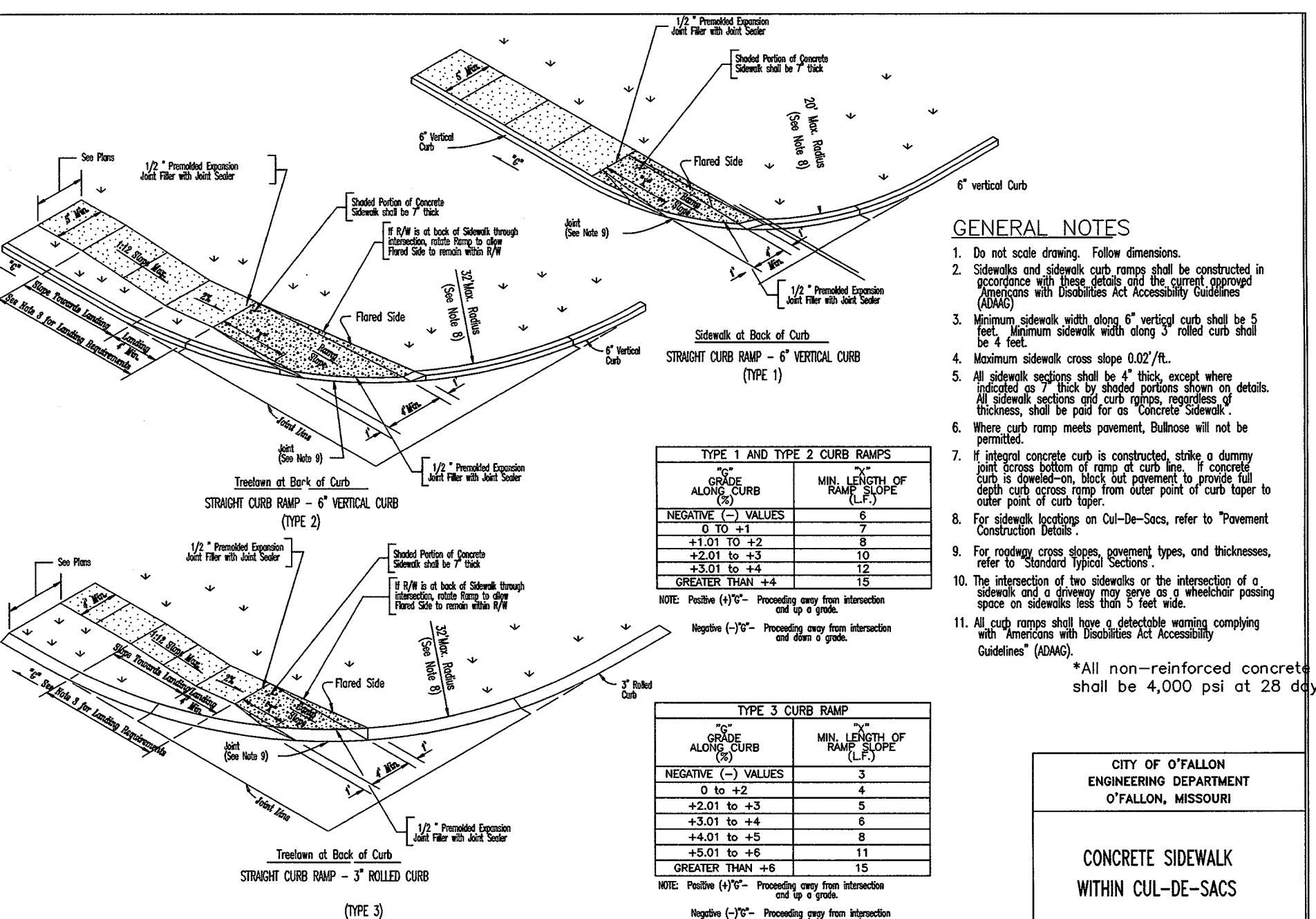


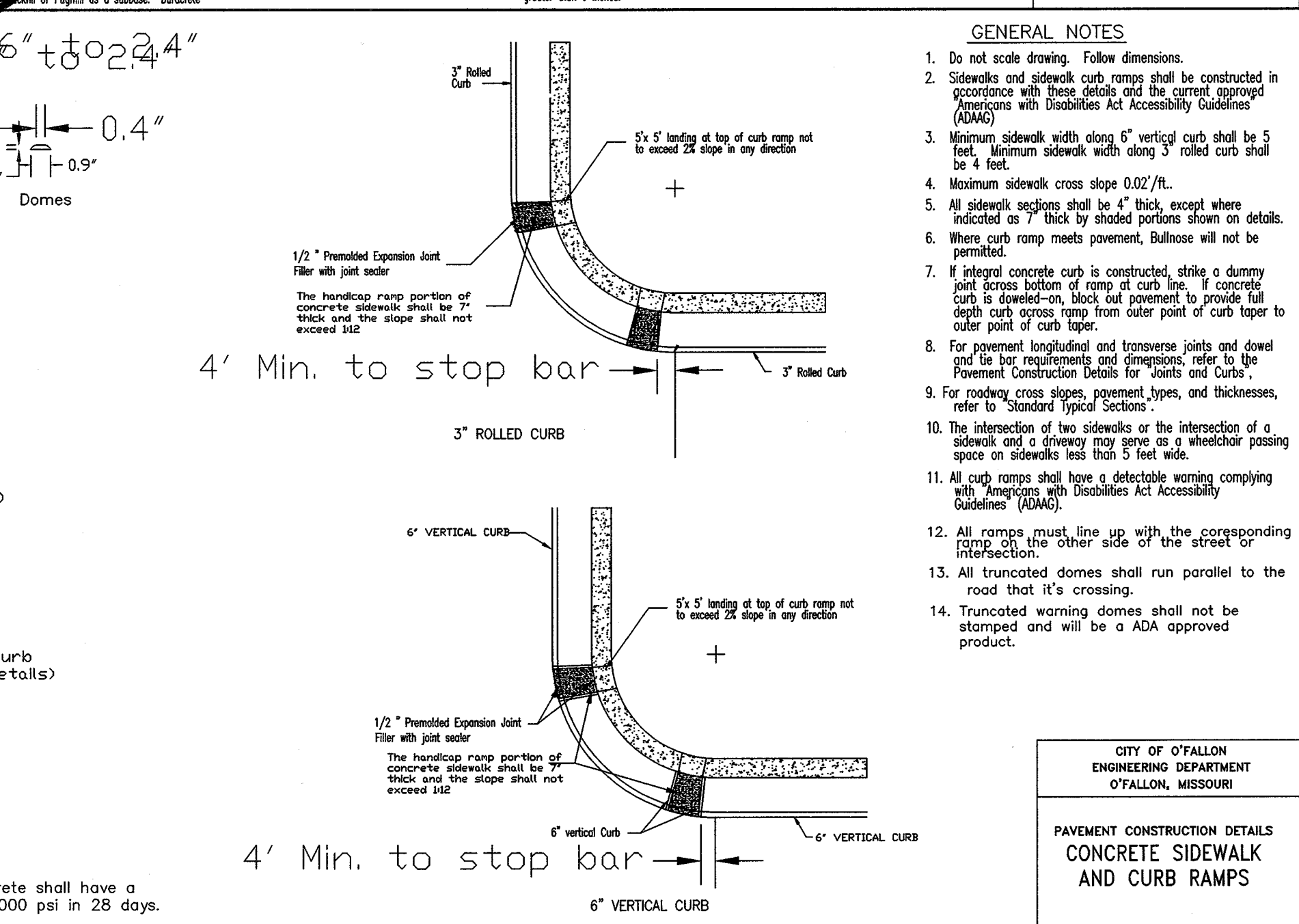
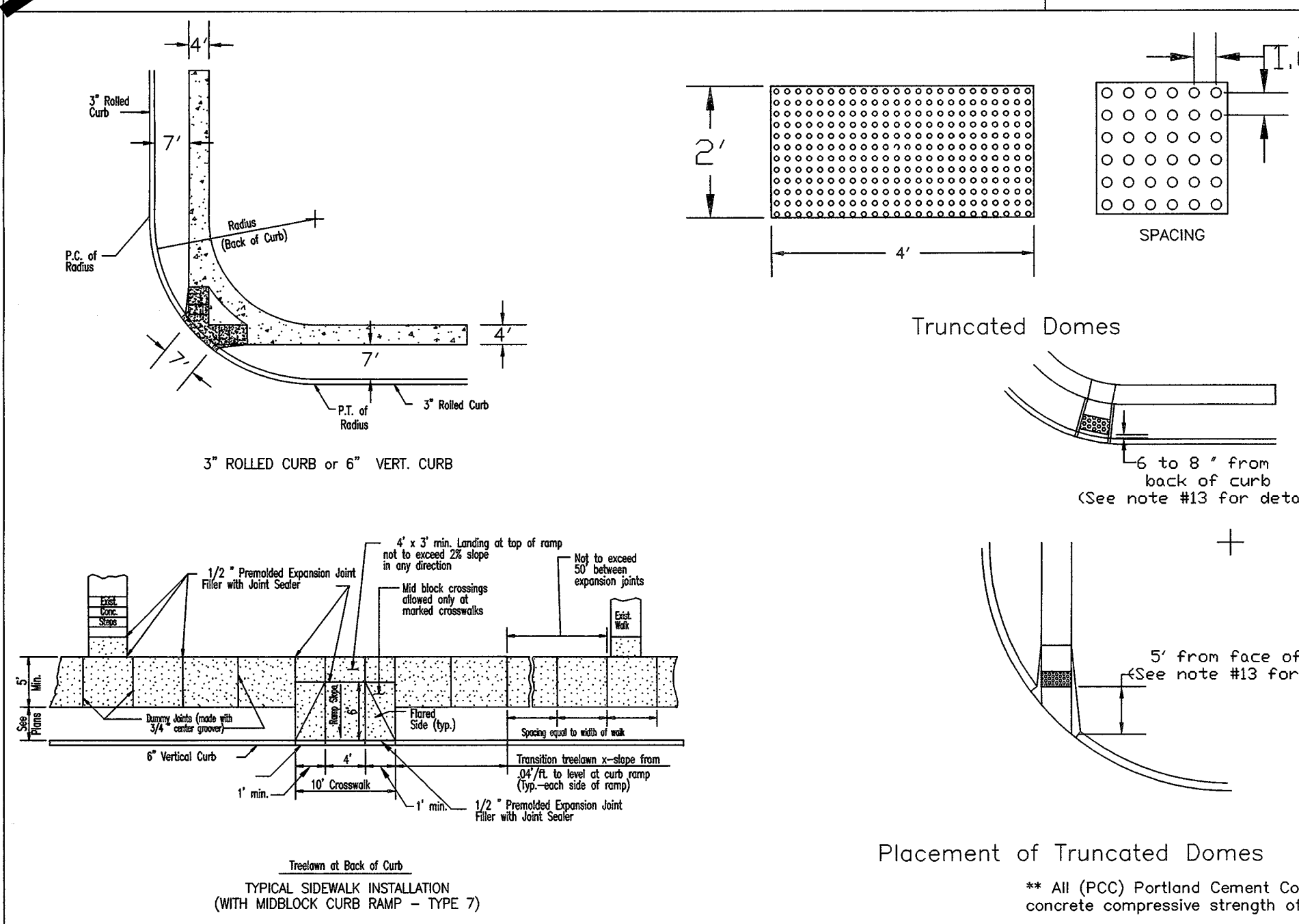
- GENERAL NOTES**
- Do not scale drawing. Follow dimensions.
 - For longitudinal and transverse slopes, dowel and bar requirements and curb dimensions not shown refer to Pavement Construction Details for Joints and Cuts.
 - All necessary curb markings shall be as required by City of O'Fallon.
 - For roadway cross slopes, pavement types and thicknesses refer to Standard Typical Sections.
 - Permits will not be issued for building construction on lots abutting a temporary turnaround unless and until the turnaround is actually constructed.
 - The removal of the temporary turnaround surface, the restoration of the disturbed ground, and the relocation of any sidewalk shall be the responsibility of the property owner that will be extending the street.
 - Other temporary turn around types can be considered depending on type and dimensions.
 - Shut streets over two hundred fifty (250) feet shall have a minimum temporary turnaround pavement width of forty (40) feet, covered by a temporary turnaround easement to remain until the road is extended and platted. In lieu of turnarounds, the Planning and Zoning Commission may approve a "T" or "Y" shaped paved space on streets which are less than two hundred fifty (250) feet in length and are planned to be extended in the future.



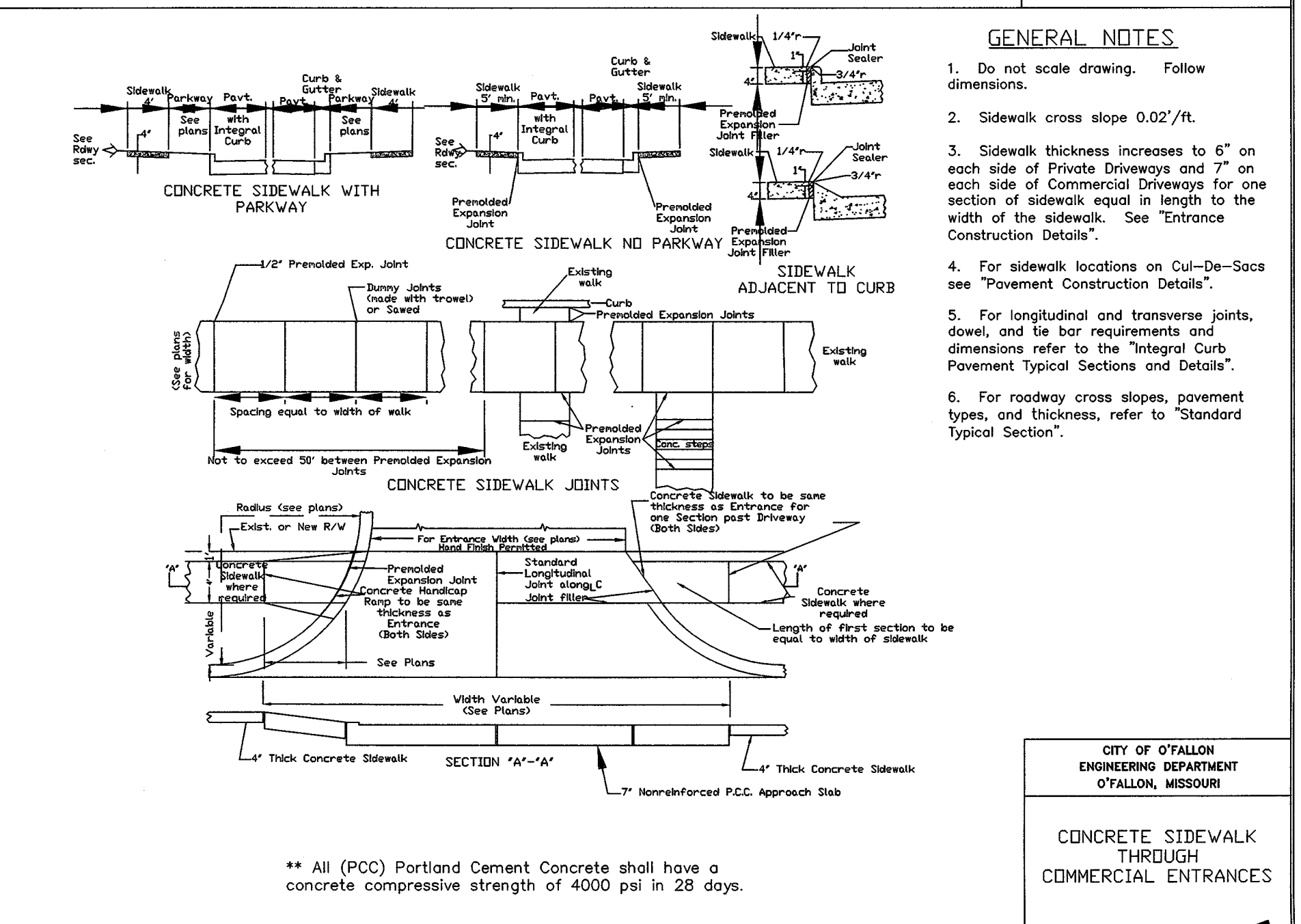
- GENERAL NOTES**
- If a permit is issued to replace existing asphalt concrete pavement with concrete pavement, the concrete pavement shall be placed on a prepared subgrade. Concrete pavement shall be required to follow the Standard Typical Sections for Concrete Pavement. The contractor will use equipment to replace the existing concrete. Concrete shall be Type 1 or Type 5 Aggregate Base Course or Paving in a subbase. Concrete shall be set up in approximately 4 hours at which time the 5 1/2\"/>



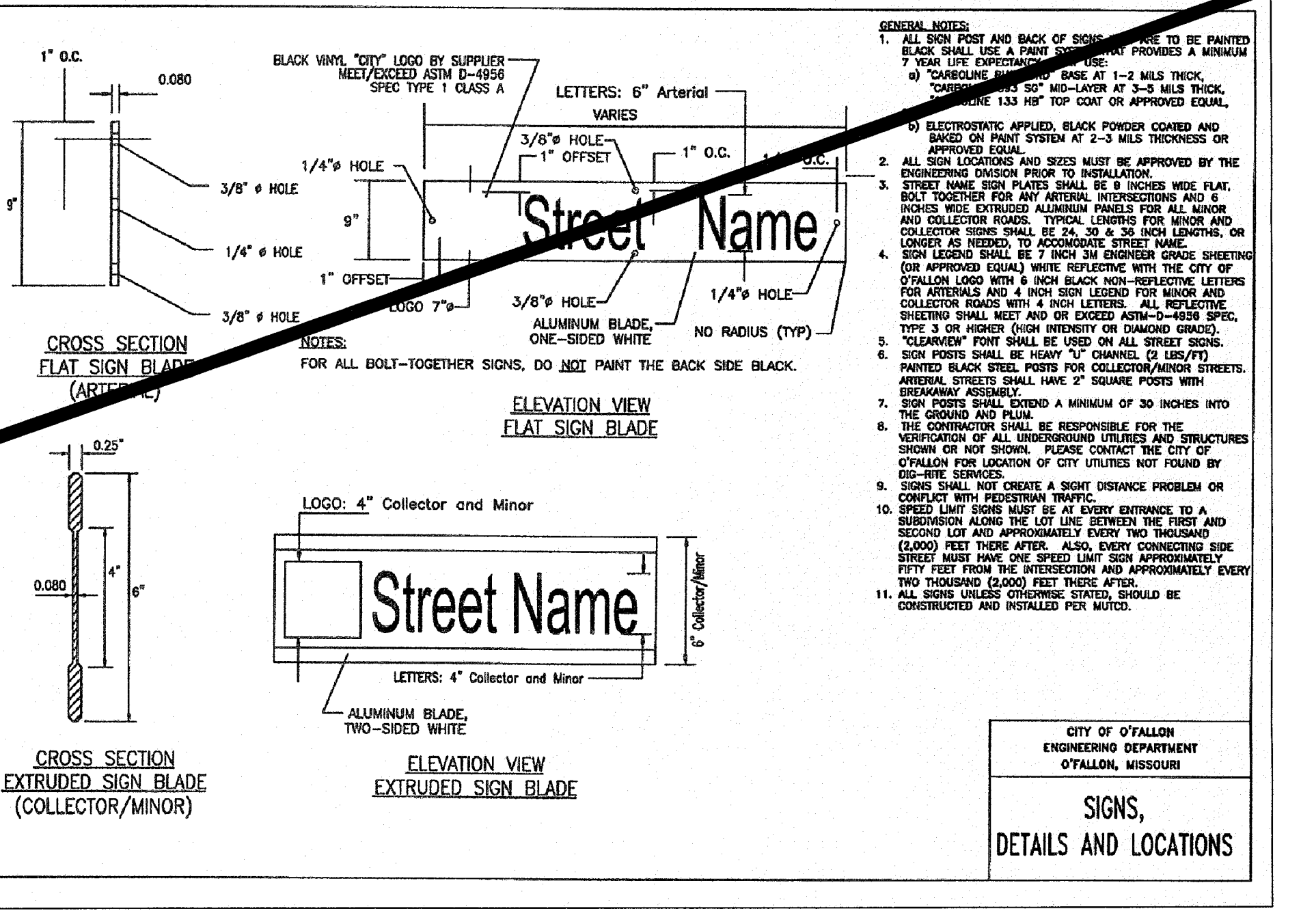
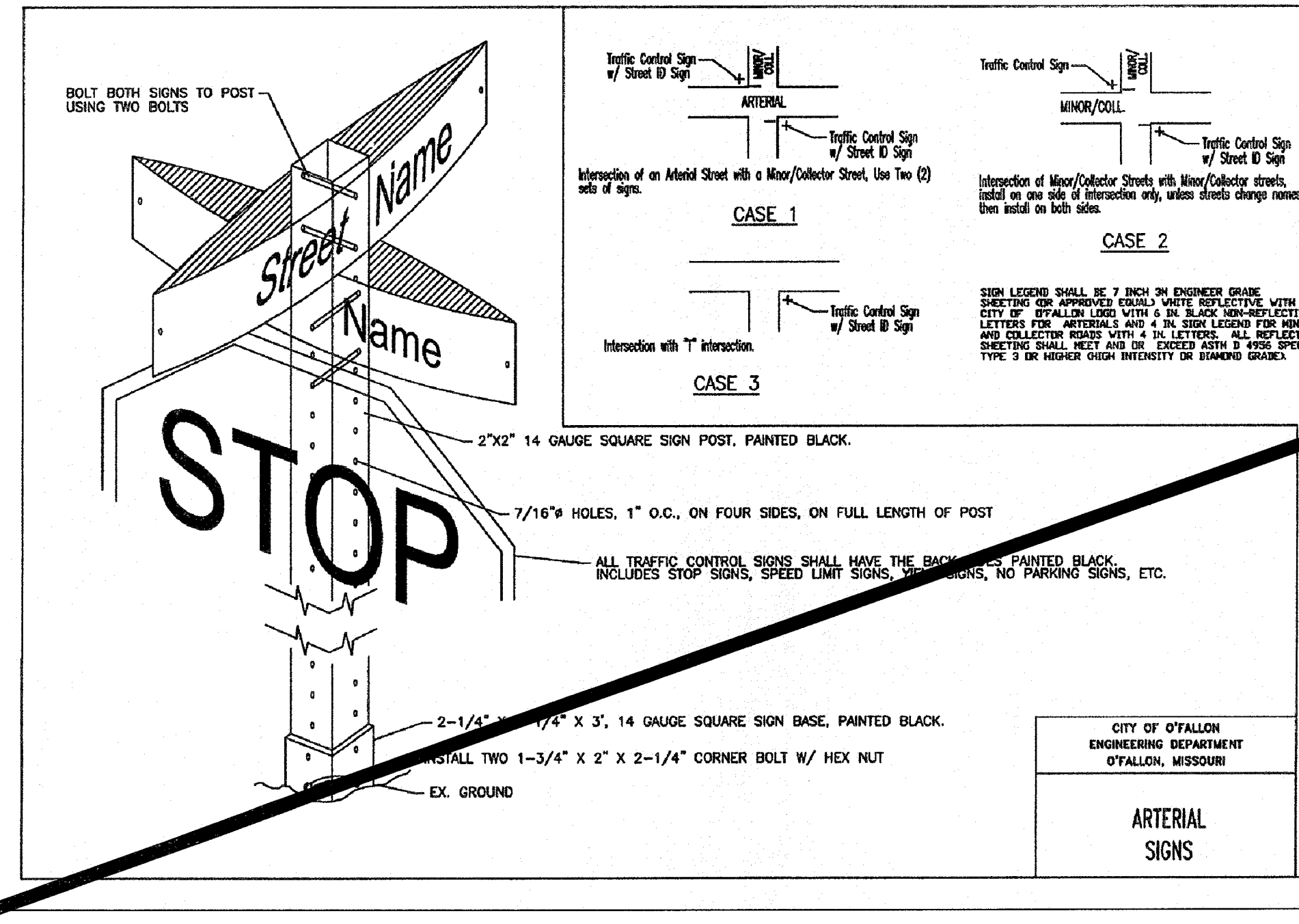
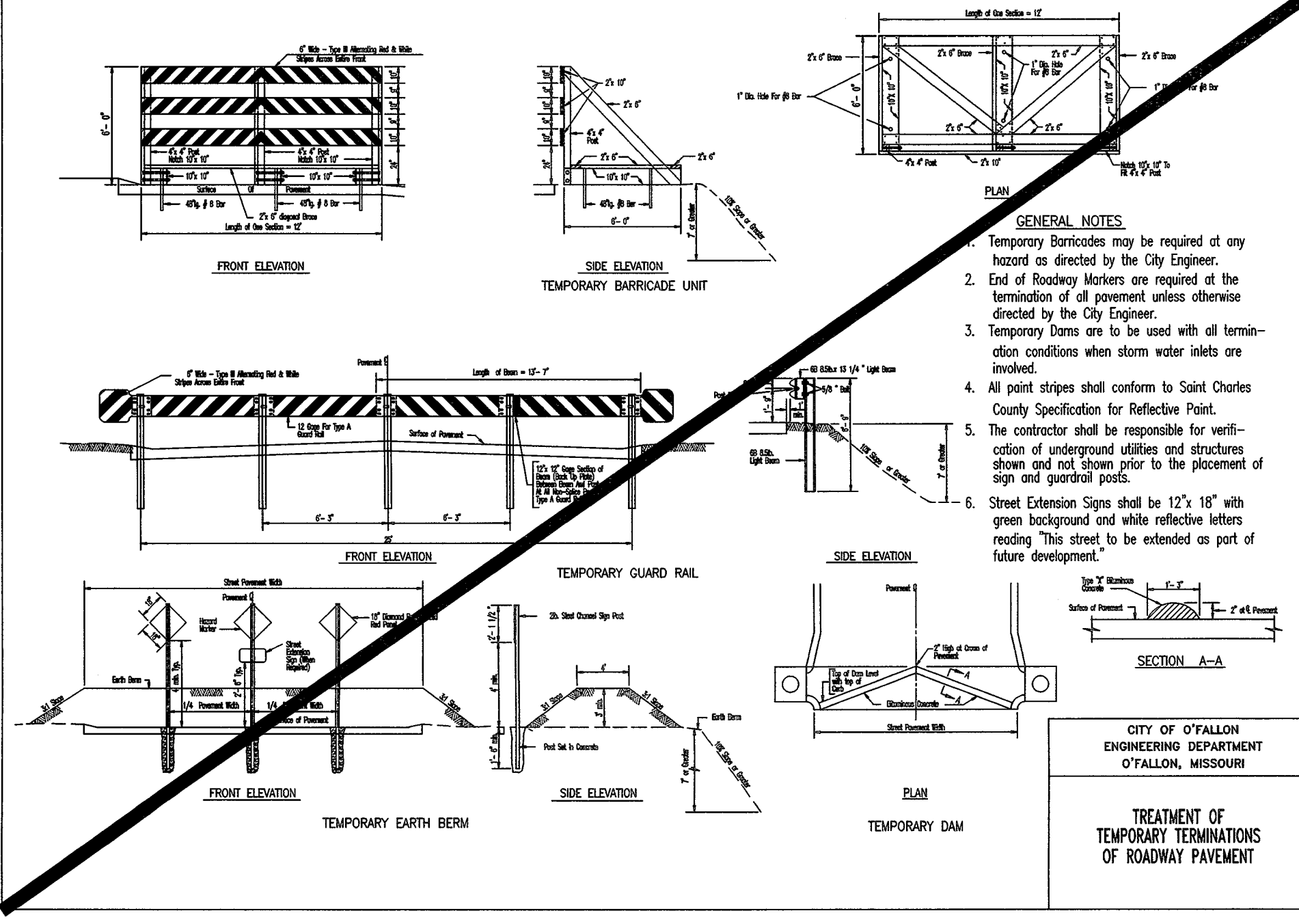
- GENERAL NOTES**
- Do not scale drawing. Follow dimensions.
 - Sidewalk and sidewalk curb ramps shall be constructed in accordance with these details and the current approved American with Disabilities Act Accessibility Guidelines (ADAAG).
 - Minimum sidewalk width along 6\"/>



- GENERAL NOTES**
- Do not scale drawing. Follow dimensions.
 - Sidewalk and sidewalk curb ramps shall be constructed in accordance with these details and the current approved American with Disabilities Act Accessibility Guidelines (ADAAG).
 - Minimum sidewalk width along 6\"/>



- GENERAL NOTES**
- Do not scale drawing. Follow dimensions.
 - Sidewalk thickness increases to 6\"/>



- GENERAL NOTES**
- ALL SIGN POST AND BACK OF SIGN SPACE TO BE PAINTED BLACK. SIGN POST SHALL BE 4\"/>

CITY OF O'FALLON ENGINEERING DEPARTMENT O'FALLON, MISSOURI

PROJECT TITLE:
 SCCAD BASE 5
 8430 MEXICO RD.
 ST. PETERS, MO. 63376

ENGINEERING PLANNING SURVEYING

221 Point West Blvd.
 St. Charles, MO 63031
 636-928-5552
 FAX 636-928-1716

DECLARATION OF RESPONSIBILITY
 I hereby specify that the documents intended to be authorized by my seal are limited to this sheet, and I hereby disclaim any responsibility for all other drawings, specifications, estimates, reports or other documents or instruments relating to or intended to be used for any part or parts of the architectural or engineering project or survey.

REFERENCE DRAWINGS ONLY

REVISIONS	
5-10-17	CITY SUBMITTAL
6-9-17	BID SET
7-18-17	CITY COMMENTS

Developer / Owner:
 ST. CHARLES COUNTY AMBULANCE DISTRICT
 4169 OLD MILL PARKWAY
 ST. PETERS, MISSOURI 63376

PAVEMENT DETAILS

P+Z No. #1302.15.01
 approved (5-5-2016)
 extension (7-6-17)
City No. #17-003492

Page No. 16 of 20