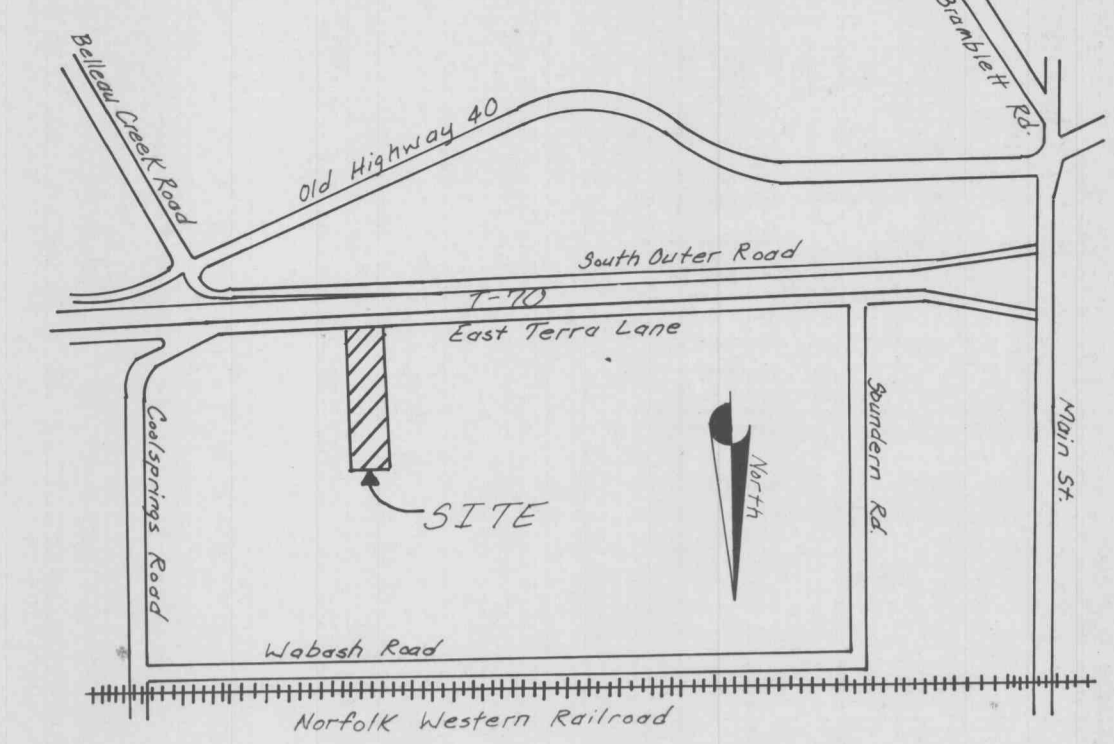
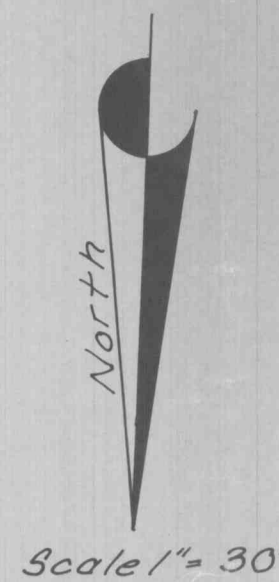
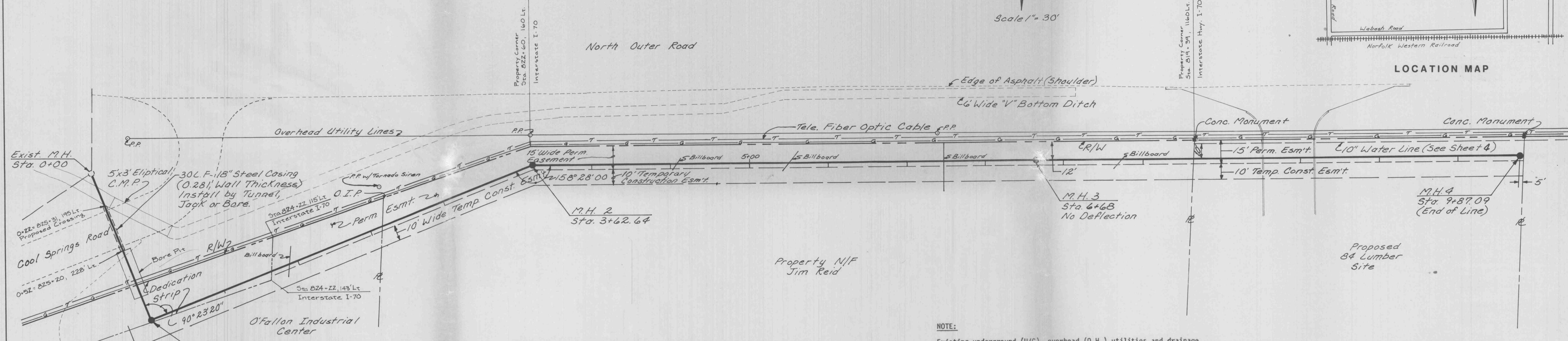


Highway I-70
IR-70-4(76)



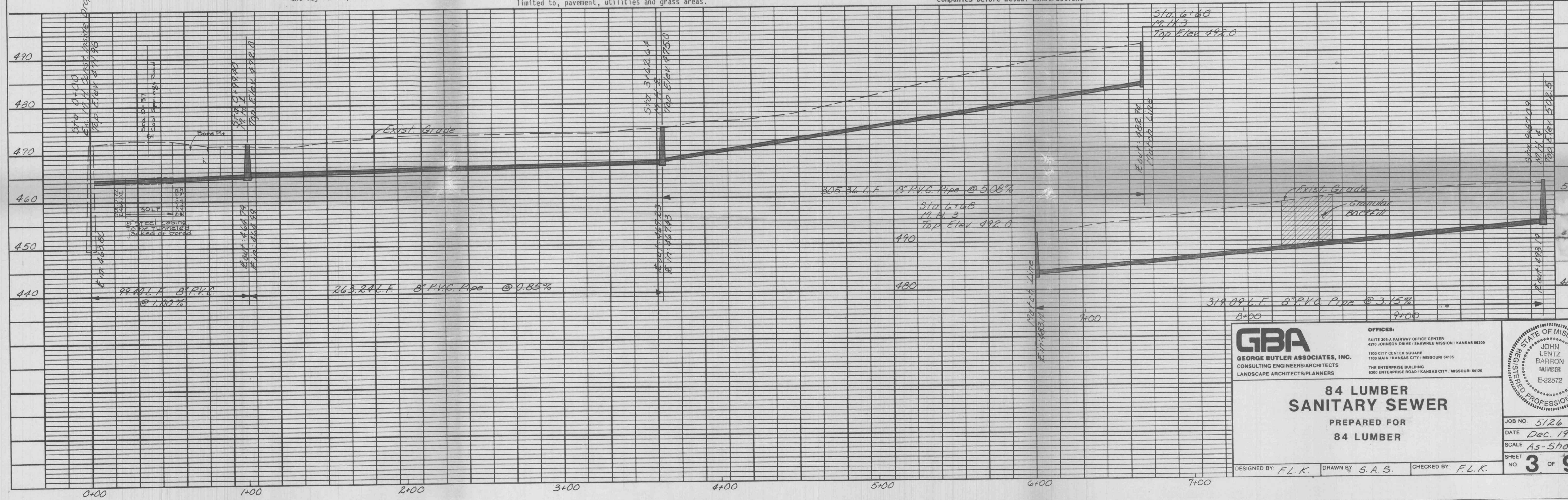
North Outer Road



NOTE: Underground utilities shall be supported and may be suspended over the bore pit.

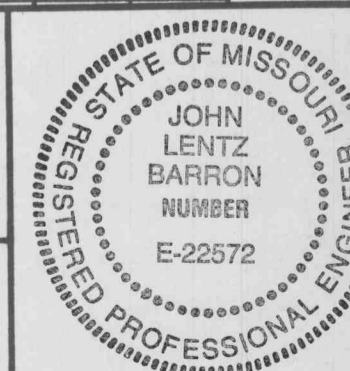
NOTE: All surface and subsurface conditions disturbed during construction shall be restored to equal or better condition by the contractor. This includes but not limited to, pavement, utilities and grass areas.

NOTE: Existing underground (U/G), overhead (O.H.) utilities and drainage structures have been plotted from available information and therefore, their locations must be considered approximate only. It is the responsibility of the individual Contractors to notify the utility companies before actual construction.



GBA
GEORGE BUTLER ASSOCIATES, INC.
CONSULTING ENGINEERS/ARCHITECTS
LANDSCAPE ARCHITECTS/PLANNERS

OFFICES:
SUITE 305-A FAIRWAY OFFICE CENTER
4210 JOHNSON DRIVE SHAWNEE MISSION, KANSAS 66205
1100 CITY CENTER SQUARE
1100 MAIN, KANSAS CITY, MISSOURI 64105
THE ENTERPRISE BUILDING
6300 ENTERPRISE ROAD / KANSAS CITY, MISSOURI 64120



**84 LUMBER
SANITARY SEWER**
PREPARED FOR
84 LUMBER

JOB NO. 5126
DATE Dec. 1987
SCALE As-Shown
SHEET NO. 3 OF 9

DESIGNED BY F.L.K. DRAWN BY S.A.S. CHECKED BY F.L.K.