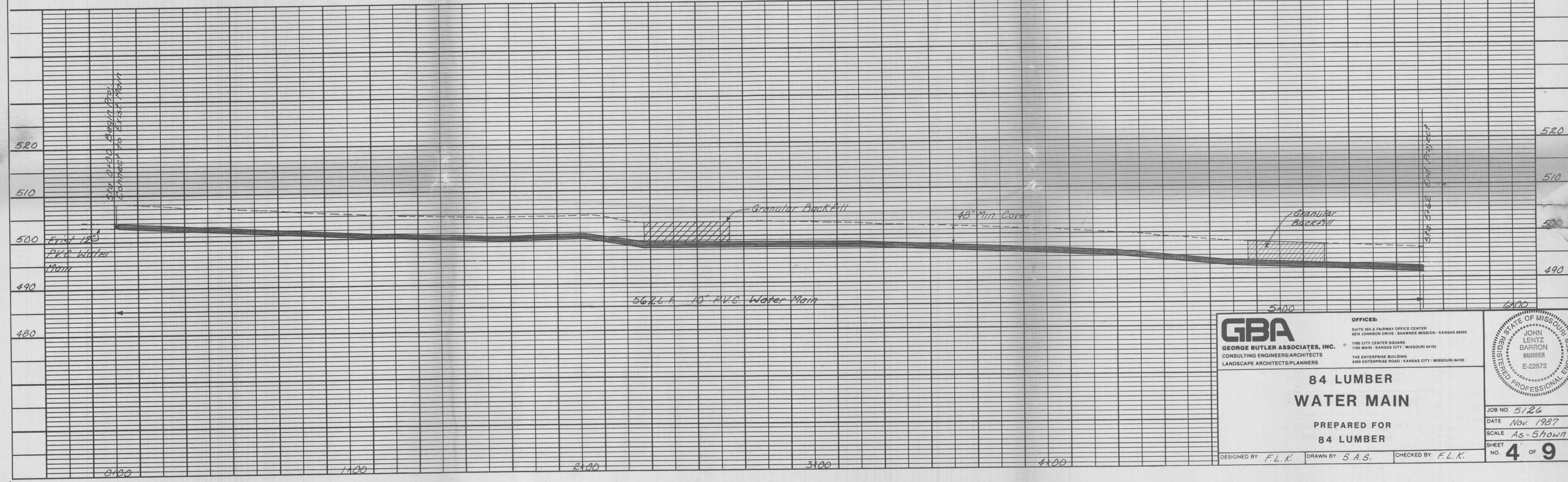


**NOTE:**  
 Existing underground (U/G), overhead (O.H.) utilities and drainage structures have been plotted from available information and therefore, their locations must be considered approximate only. It is the responsibility of the individual Contractors to notify the utility companies before actual construction.

All surface and subsurface conditions disturbed during construction shall be restored to equal or better condition by the contractor. This includes but not limited to, pavement, utilities and grass areas.



<b>GBA</b> GEORGE BUTLER ASSOCIATES, INC. CONSULTING ENGINEERS/ARCHITECTS LANDSCAPE ARCHITECTS/PLANNERS	OFFICES: SUITE 305 A FAIRWAY OFFICE CENTER 4210 JOHNSON DRIVE, SHAWNEE MISSION, KANSAS 66205 JOHN LENTZ BARRON NUMBER E-22572	STATE OF MISSOURI REGISTERED PROFESSIONAL ENGINEER
	1100 CITY CENTER SQUARE 1100 MAIN, KANSAS CITY, MISSOURI 64105 THE ENTERPRISE BUILDING 2300 ENTERPRISE ROAD, KANSAS CITY, MISSOURI 64108	
<b>84 LUMBER          WATER MAIN</b>		
PREPARED FOR <b>84 LUMBER</b>		
DESIGNED BY: F.L.K.	DRAWN BY: S.A.S.	CHECKED BY: F.L.K.
JOB NO. 5126		DATE Nov. 1987
SCALE As-Shown		SHEET NO. 4 OF 9