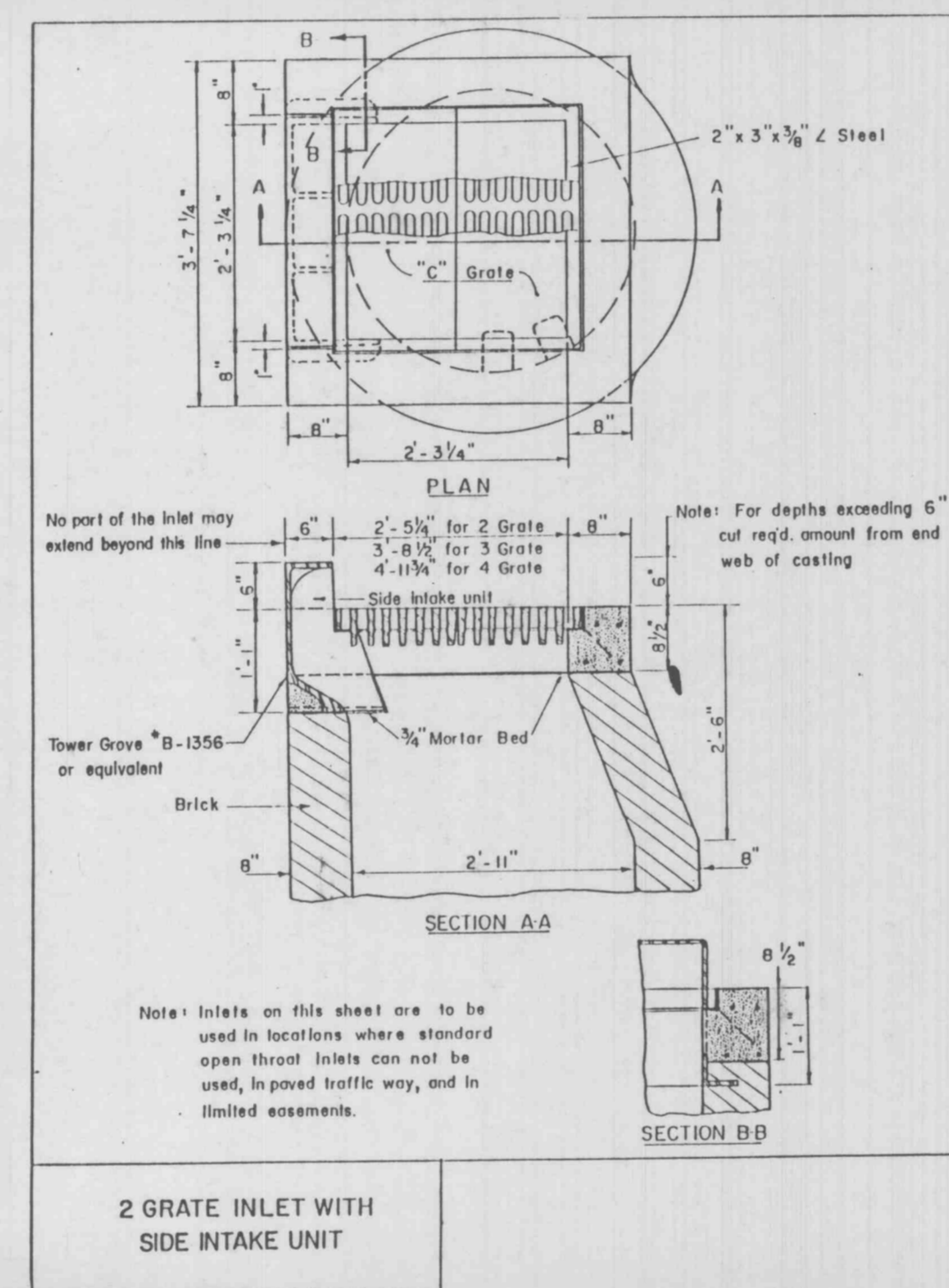
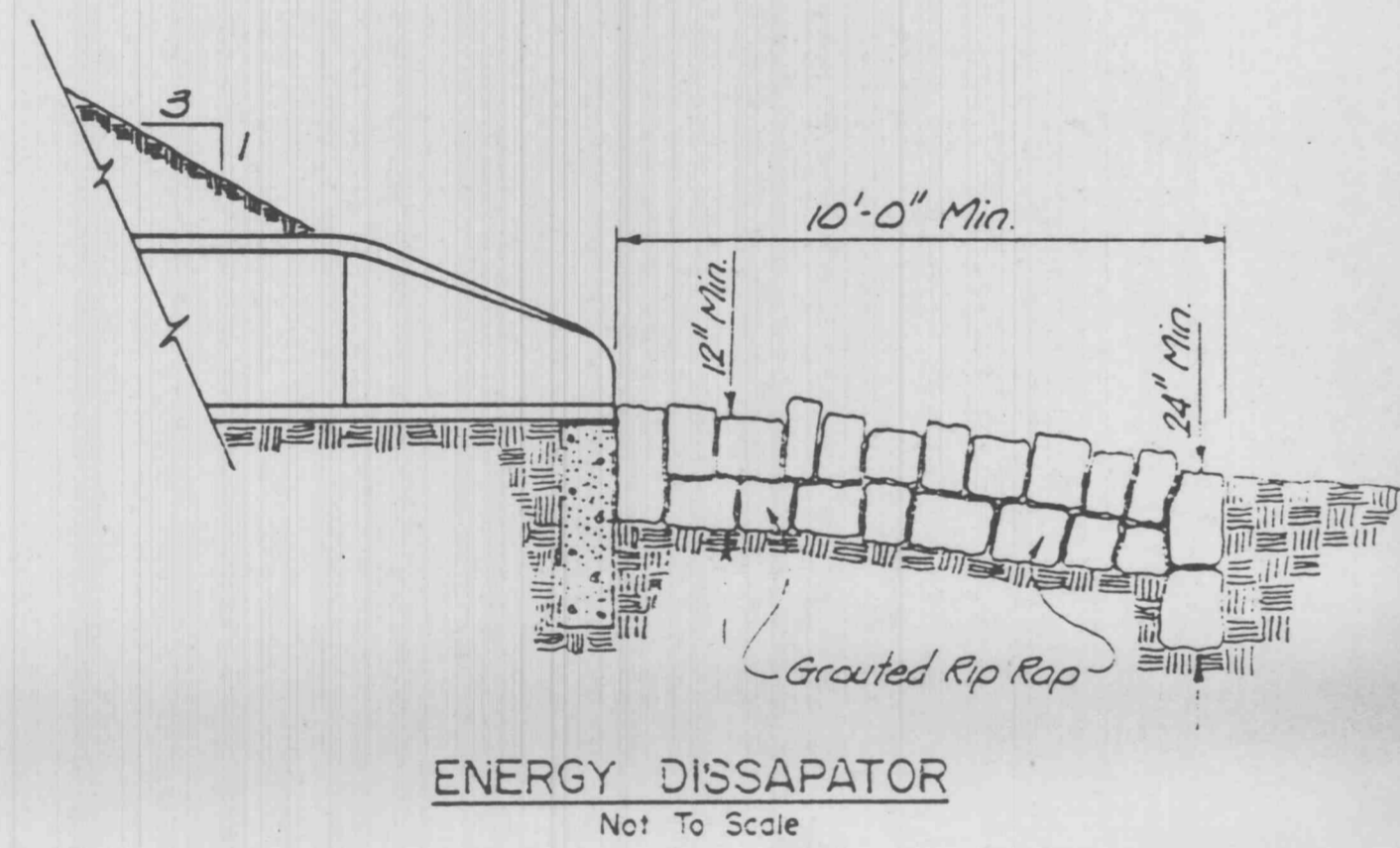
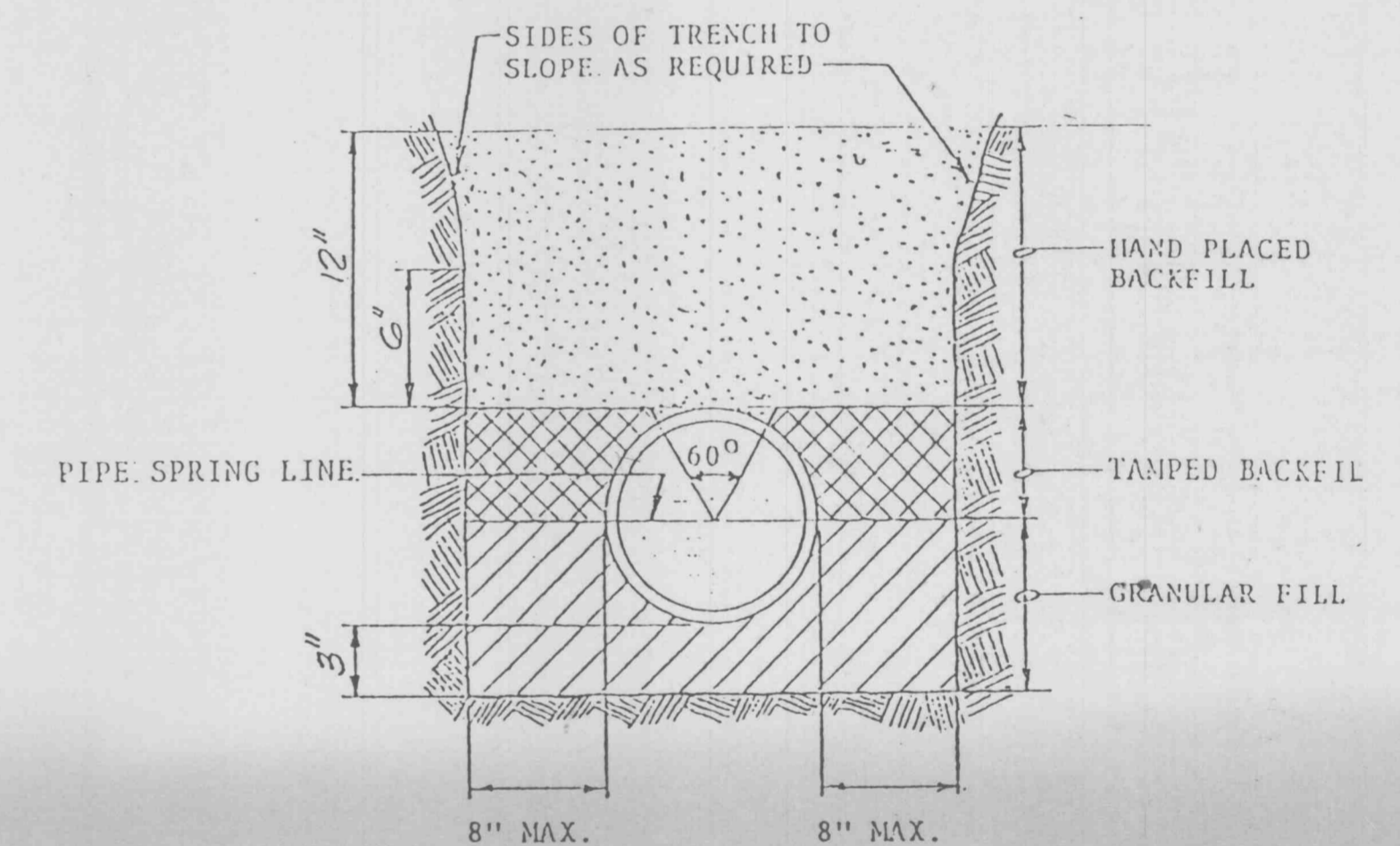


CONCRETE TOEWALL DETAILS
 N.T.S.



ROUND PIPE			
Inlet Diameter of Pipe (Inches)	Payline Width of Trench (Inches)	Payline Width of Trench (Feet)	Pipe Volume (cu ft per ft)
4	26	2.35	3.20
6	28	2.53	3.66
8	28	2.53	3.10
10	28	2.53	3.86
12	28	2.53	3.98
15	32	2.67	4.89
18	35	2.92	5.63
21	39	3.25	6.41
24	42	3.50	7.39
27	45	3.75	8.18
30	49	4.08	9.30
33	53	4.42	10.53
36	56	4.67	11.43
DISCONTINUED			
42	63	5.25	13.38
48	70	5.83	15.67
54	77	6.42	18.15
60	84	7.00	20.73
66	91	7.58	23.45
72	98	8.17	26.37
78	105	8.75	29.39
84	112	9.33	32.57
90	119	9.92	35.90
96	126	10.50	39.37
102	133	11.08	42.99
108	140	11.67	46.75
114	147	12.25	50.66
120	154	12.83	54.72
126	161	13.42	58.92
132	168	14.00	63.27
138	175	14.58	67.76

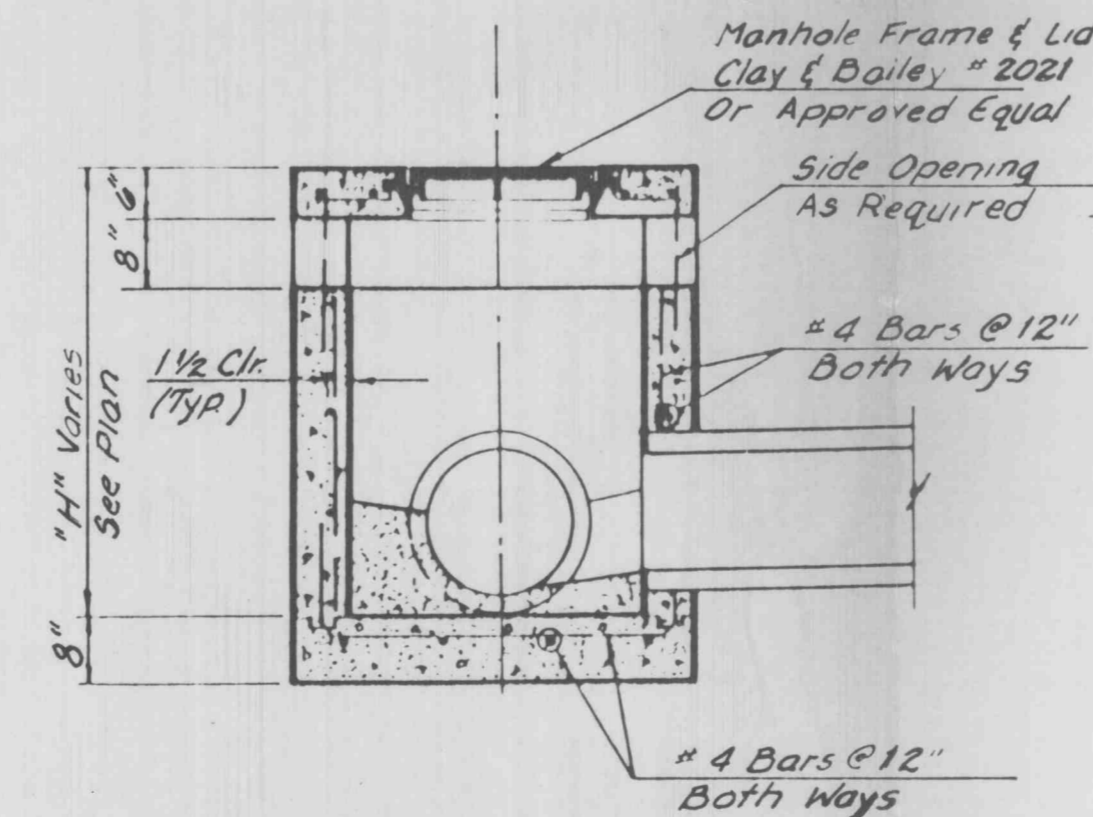
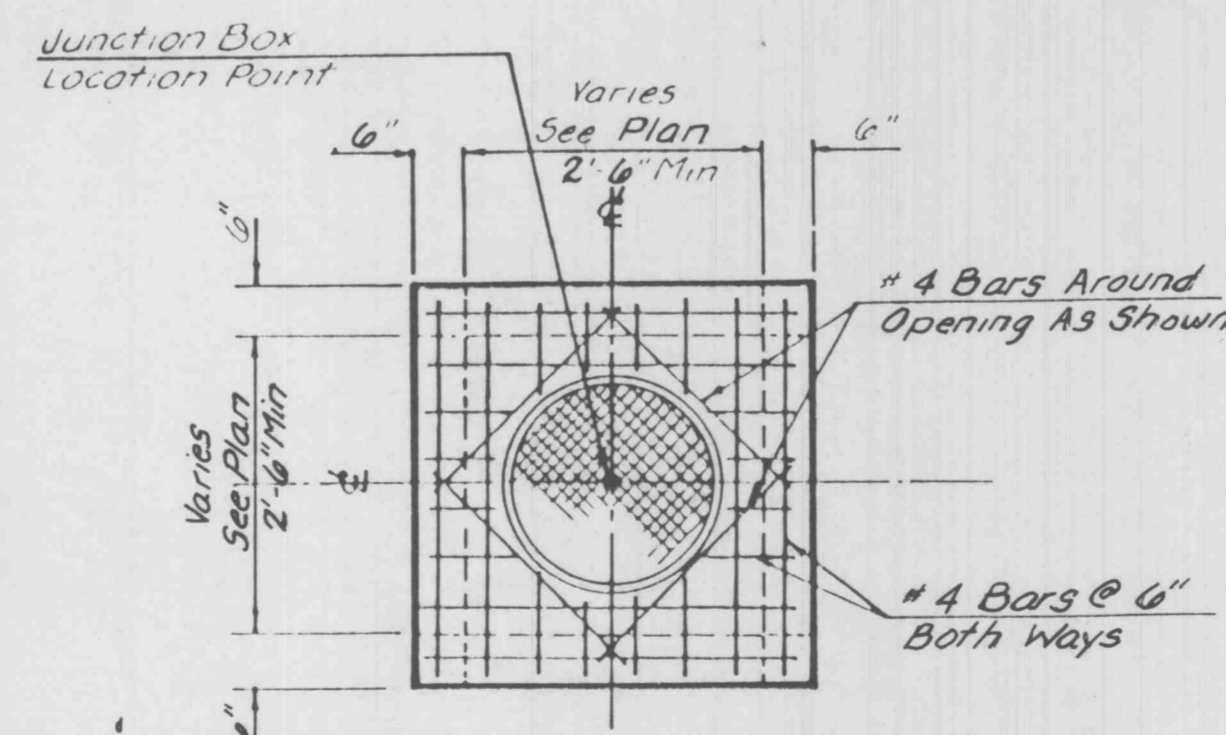


NOTES:
 GRANULAR FILL TO BE CRUSHED STONE OR PEA GRAVEL WITH NOT LESS THAN 95% PASSING 1/2" AND NOT LESS THAN 95% TO BE RETAINED ON A #4; TO BE PLACED IN NOT MORE THAN 6" LAYERS AND COMPACTED BY SLICING WITH A SHOVEL.

TAMPED BACKFILL SHALL BE FINELY DIVIDED JOB EXCAVATED MATERIAL FREE FROM DEBRIS, ORGANIC MATERIAL AND STONES, COMPACTED TO 95% MAXIMUM DENSITY AS DETERMINED BY AASHO STANDARD METHOD T-99. GRANULAR FILL MAY BE SUBSTITUTED FOR TAMPED BACKFILL TO THE TOP OF THE PIPE.

HAND PEACED BACKFILL SHALL BE FINELY DIVIDED MATERIAL FREE FROM DEBRIS AND STONES.

STANDARD SEWER PIPE BEDDING



AREA INLET / JUNCTION BOX
 DETAIL