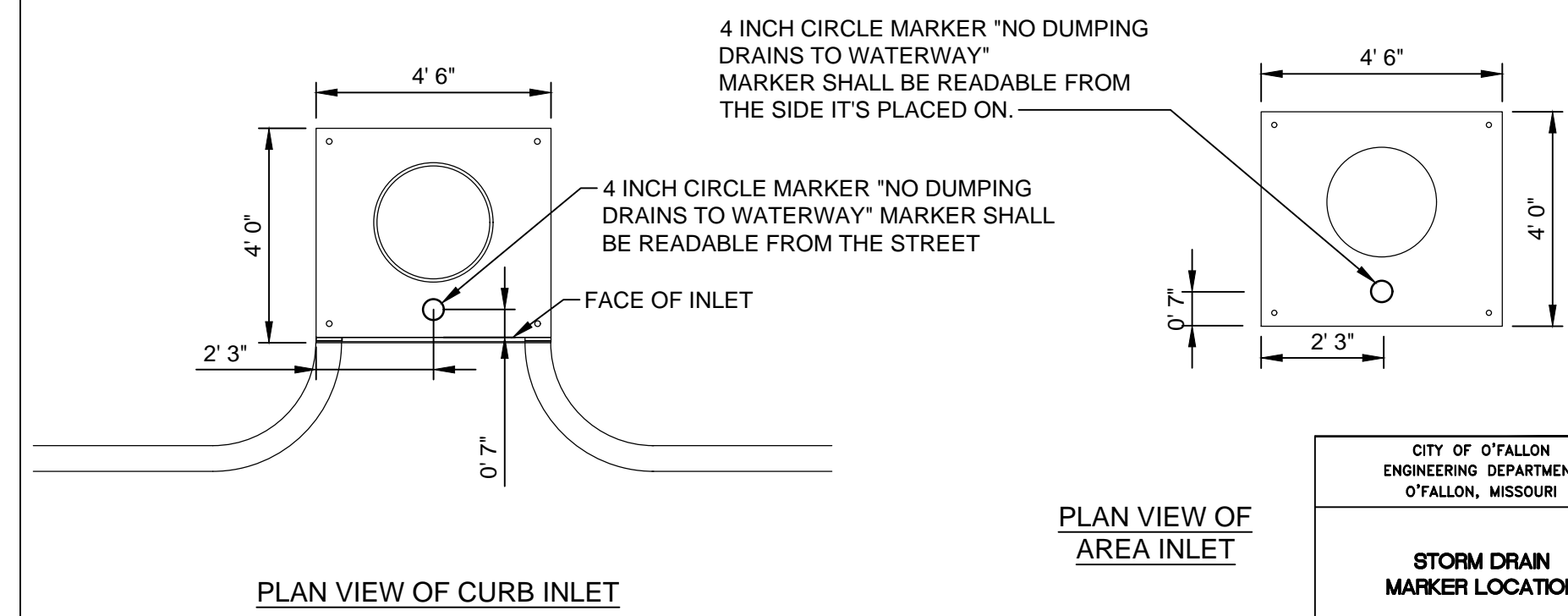


CITY OF OFFALLON
FORT ZUMWALT PARK
MAINTENANCE GARAGE

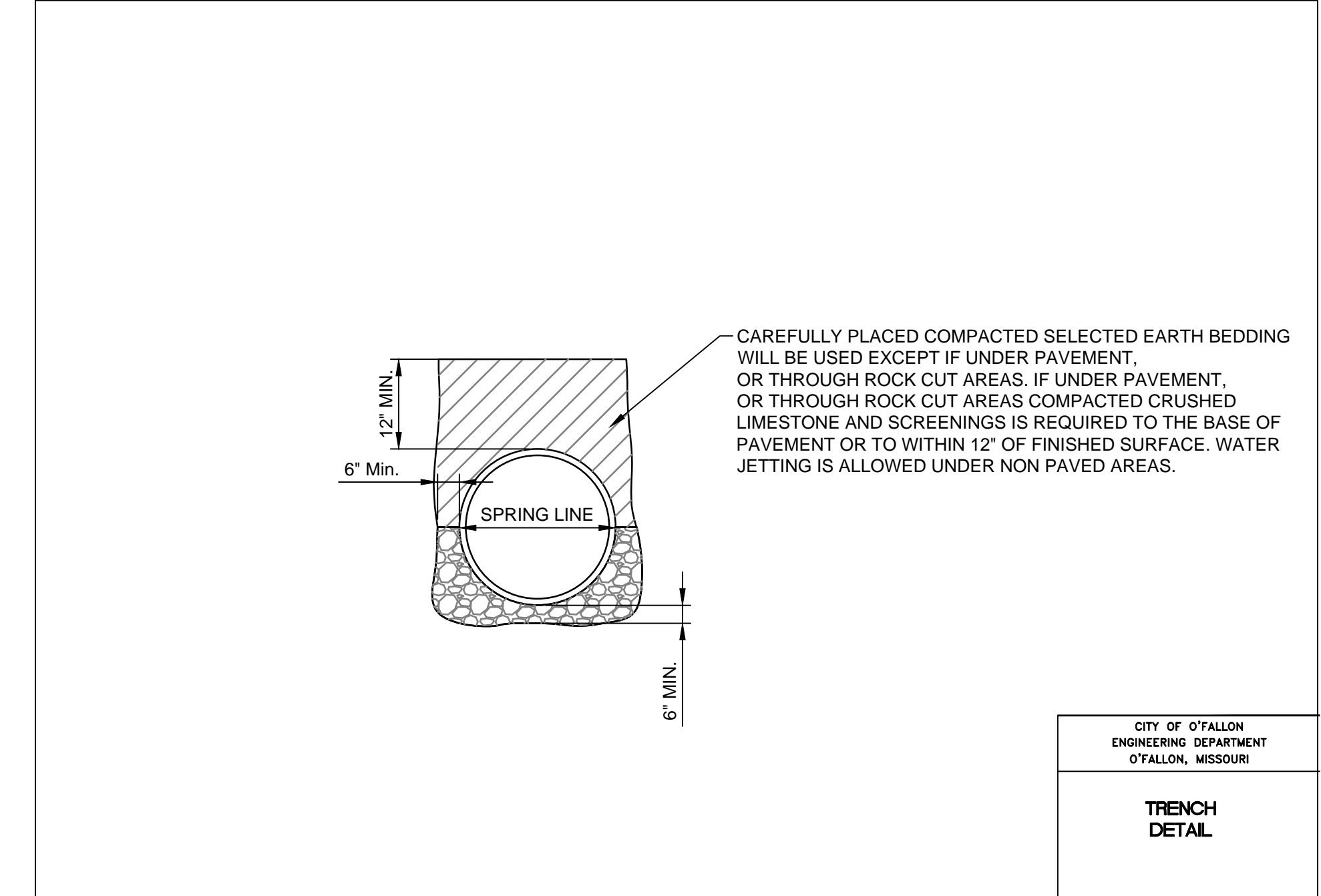
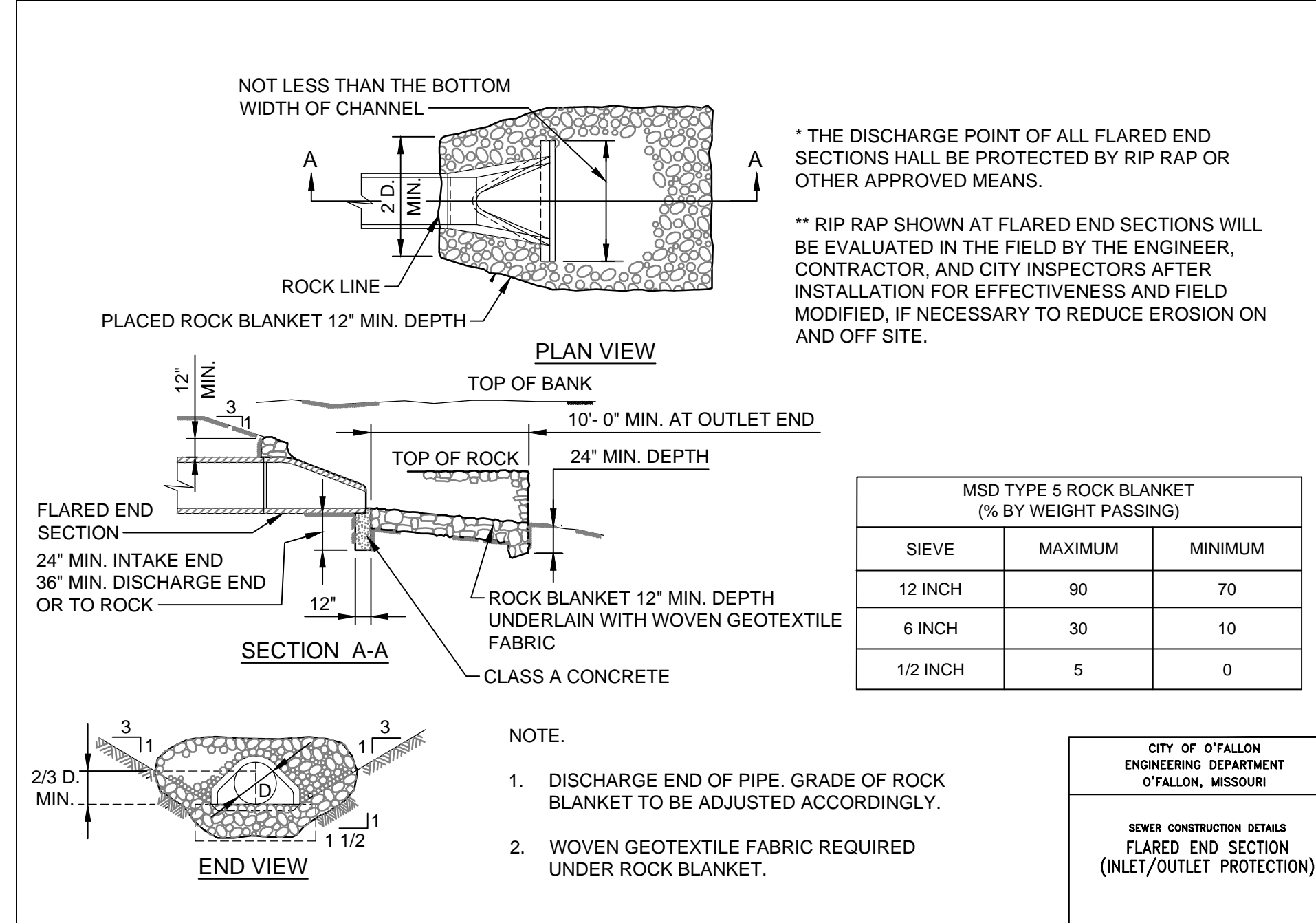
990 JESSUP DRIVE WEST
OFFALLON, MISSOURI 63366

* THE CITY OF OFFALLON MUST BE PROVIDED WITH A SYMBOL/MEDALLION FOR REVIEW AND APPROVAL PRIOR TO INSTALLATION. CONTACT THE CITY IF ANY INFORMATION IS NEEDED.

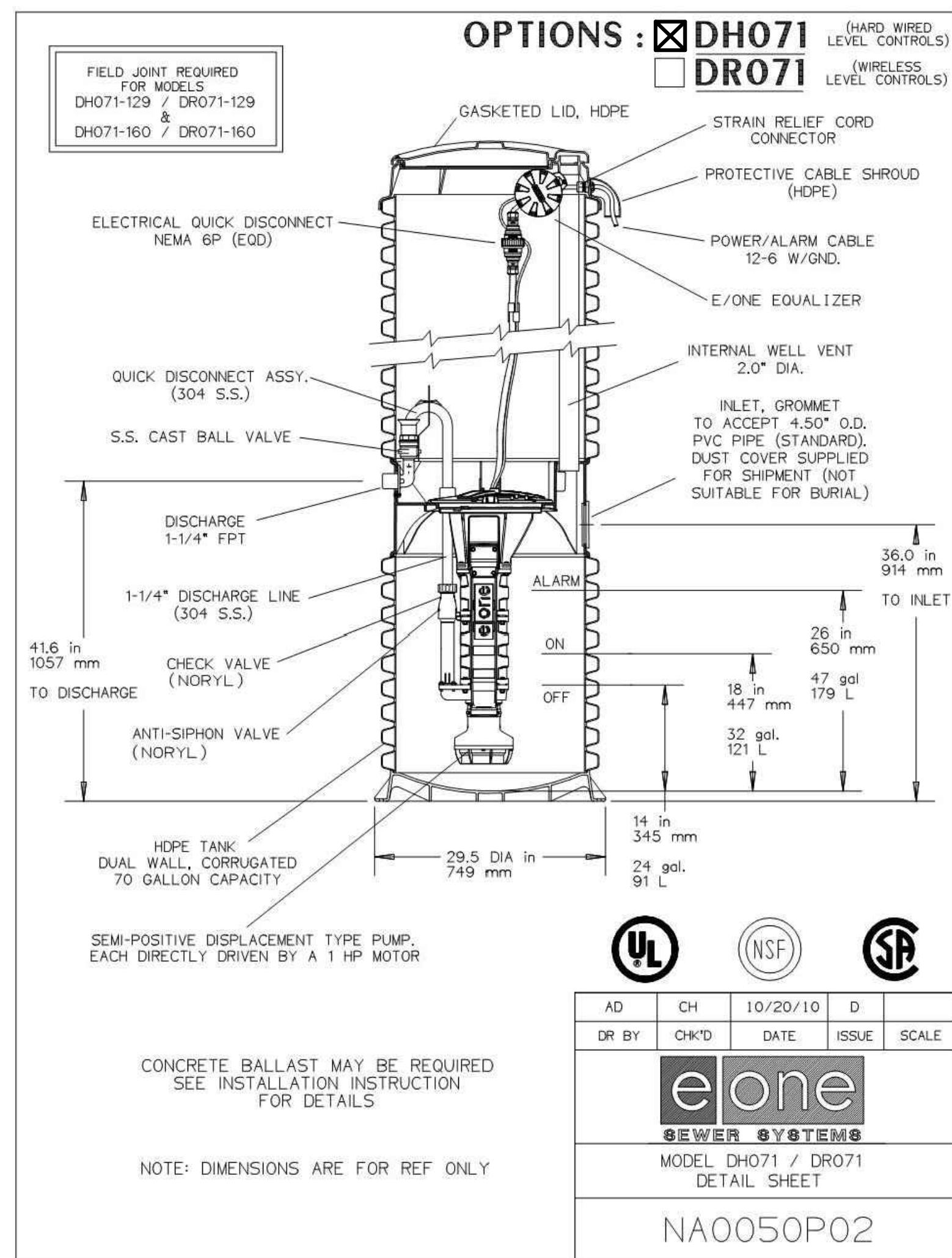
SIZE	STYLE	ADHESIVE	MESSAGE (PART #)
3 7/8" TO 4"	CRYSTAL CAP OR STANDARD STYLE	EPOXY	NO DUMPING DRAINS TO WATERWAY



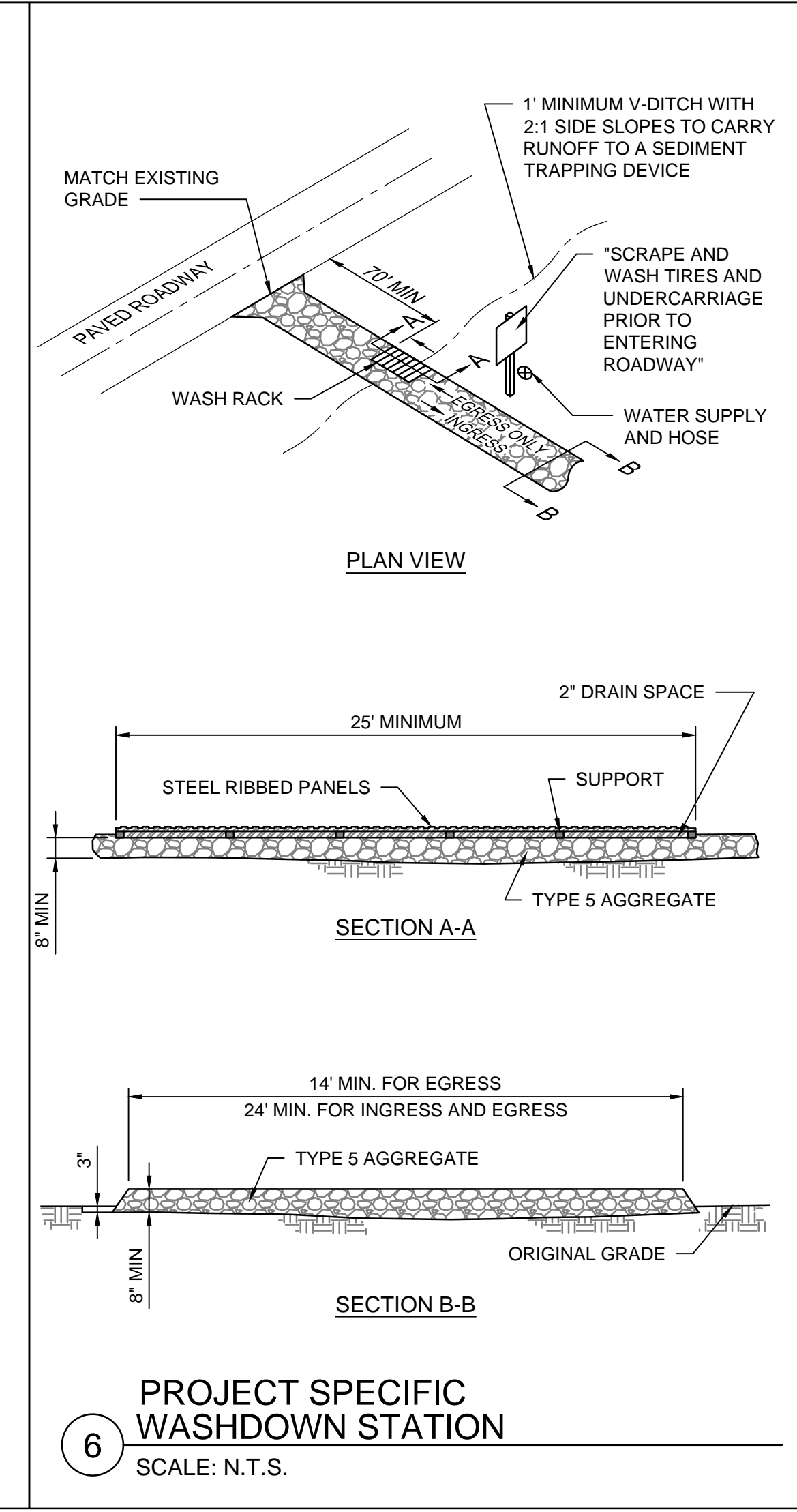
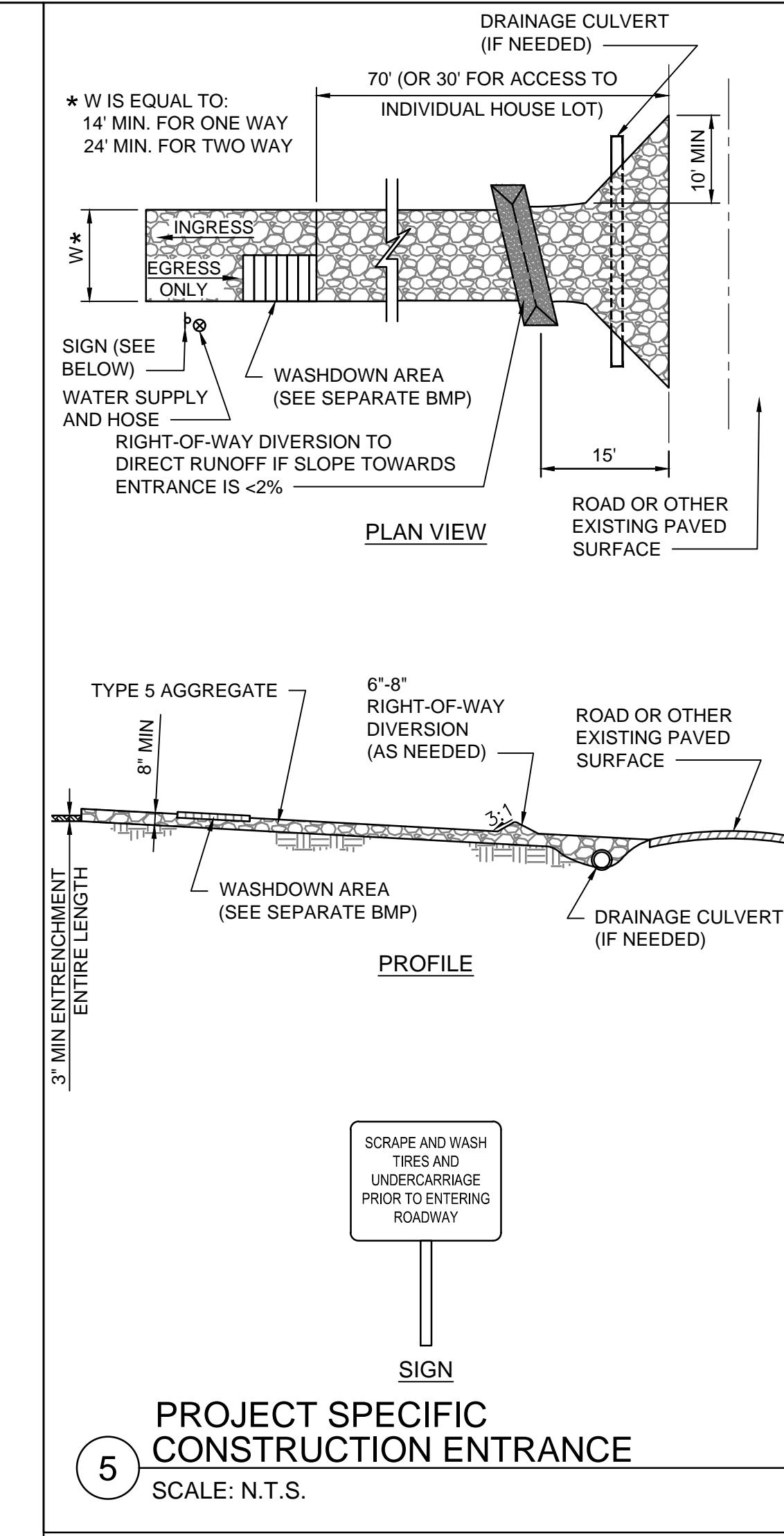
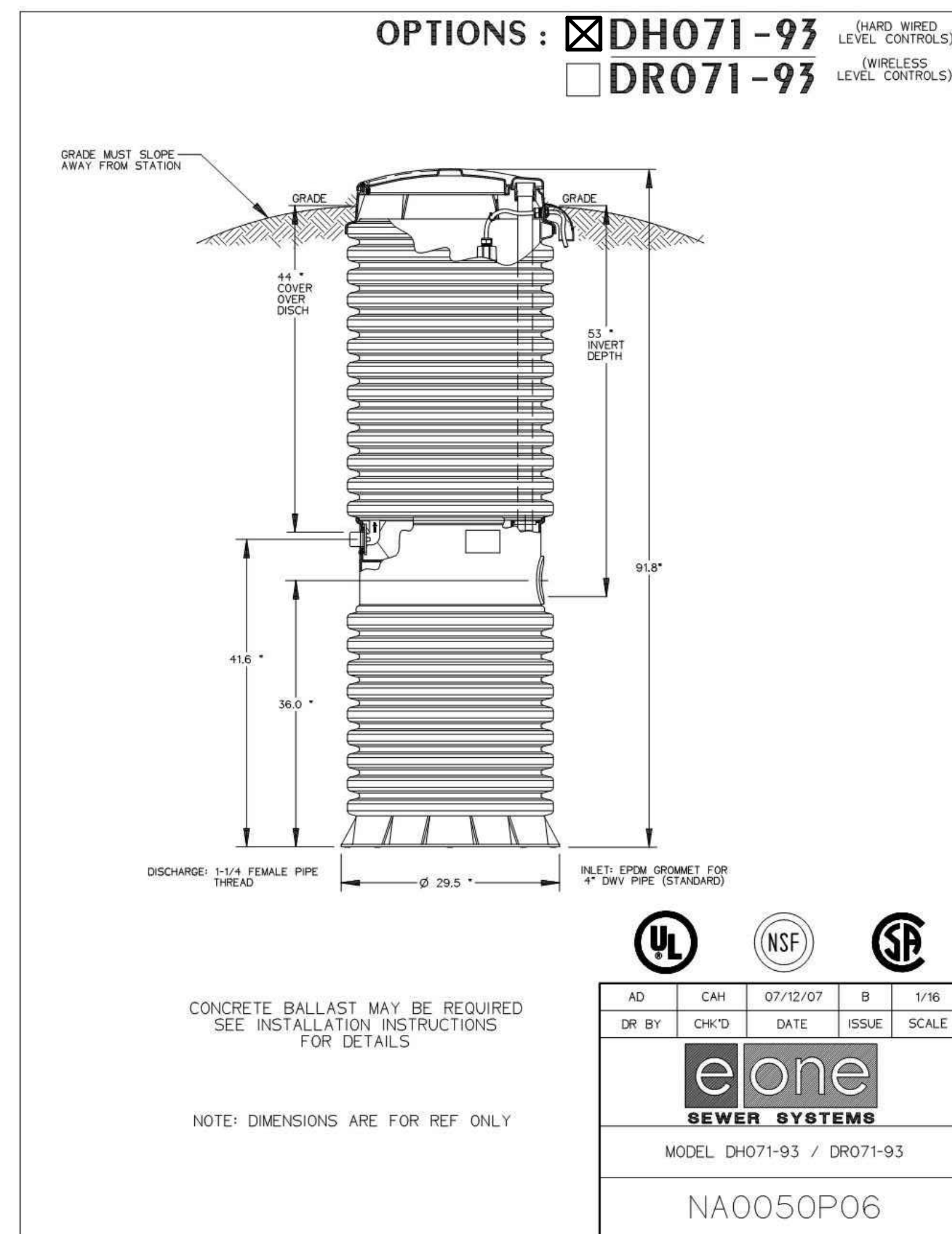
1 CITY OF OFFALLON - STORM AND SANITARY DETAILS
SCALE: N.T.S.



* ALL OTHER STORM OR SANITARY SEWER DETAILS WILL BE BY M.S.D. 2007 STANDARDS AND SPECIFICATIONS. CITY OF OFFALLON STANDARD COMMERCIAL NOTES AND DETAILS - JUNE 2010

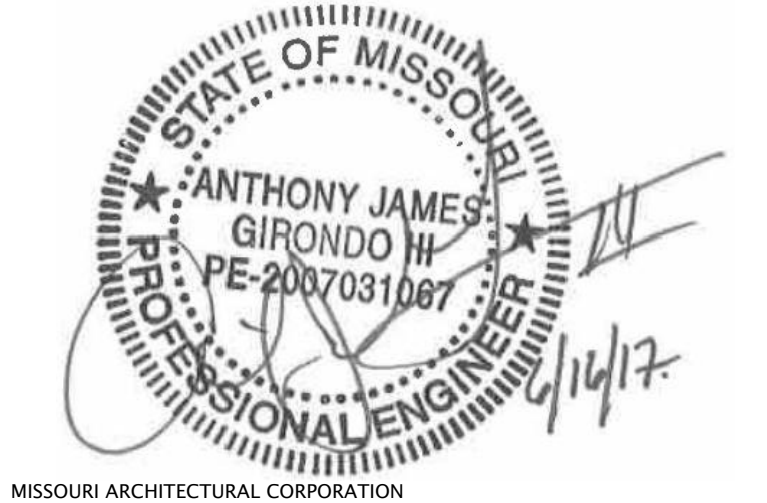


7 PROJECT SPECIFIC GRINDER PUMP
SCALE: N.T.S.



FINAL ISSUE

DISCLAIMER OF RESPONSIBILITY
I hereby specify that the documents intended to be authorized by my seal are limited to this sheet, and I hereby disclaim any responsibility for all other Drawings, Specifications, Estimates, Reports or other documents or instruments relating to or intended to be used for any part or parts of the architectural or engineering project or survey.



MISSOURI ARCHITECTURAL CORPORATION
CERTIFICATE LIC. NO. 000216
MISSOURI PROFESSIONAL ENGINEERING CORPORATION
CERTIFICATE LIC. NO. 000255
MISSOURI PROFESSIONAL LAND SURVEY CORPORATION
CERTIFICATE LIC. NO. 000078

No.	Date	Description

KdG PROJECT NO.: 160064-0001
DRAWN: JMU
CHECKED: AJG
DATE: 06/16/17