

### EARTHWORK QUANTITIES

BULK CUT (UNADJUSTED)	1,842 C.Y.
SUBGRADE	+ 1,689 C.Y.
TOTAL CUT	3,531 C.Y.
BULK FILL (UNADJUSTED)	5,417 C.Y.
SUBGRADE	- 2,150 C.Y.
TOTAL FILL	3,267 C.Y.
BULK CUT TOTAL (UNADJUSTED)	264 C.Y.

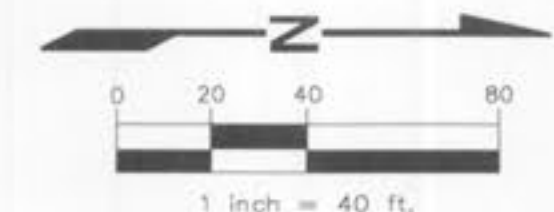
**NOTE:**  
EARTHWORK CALCULATIONS DO NOT CONSIDER SHRINKAGE (SMELL AS MAY OCCUR.)  
NO HAUL OFF OF EXCESS CUT MATERIAL IS PROPOSED  
THE EARTHWORK QUANTITIES LISTED HEREIN WERE CALCULATED BASED ON THE EXISTING VS. PROPOSED GRADES INDICATED ON THE SITE AND GRADING PLAN. UNLESS OTHERWISE NOTED, THE QUANTITIES ARE TO FINISH GRADE, AND NO ADJUSTMENT HAS BEEN MADE TO ACCOMMODATE TOPSOIL STRIPPING/STOCKPILING OR CLEARING & GRUBBING OPERATIONS; INSTALLATION OF UNDERGROUND UTILITIES; FOUNDATION, FOOTING, OR OTHER IMPROVEMENT RELATED EXCAVATIONS; REMOVAL OR TREATMENT OF UNSUITABLE SOILS; SUBGRADE FOR PAVEMENTS, CURBS, SIDEWALKS, ETC.; OR TOPOGRAPHIC VARIATIONS NOT INDICATED ON THE DRAWINGS. THE QUANTITIES LISTED ARE ESTIMATES ONLY AND THE ENGINEER ASSUMES NO LIABILITY FOR ANY COSTS ASSOCIATED WITH OVERRUNS OF ANY KIND. ANY REFERENCE TO SHRINKAGE OR SWELL IS STRICTLY AN ESTIMATE. BASED ON AVAILABLE INFORMATION OR PAST EXPERIENCE AND IT IS THE CONTRACTOR'S RESPONSIBILITY TO INDEPENDENTLY VERIFY THE VALUES. IT IS ULTIMATELY THE SOLE RESPONSIBILITY OF THE CONTRACTOR TO INCLUDE IN HIS BID THE EARTHWORK QUANTITIES NECESSARY TO COMPLETE THE GRADING THAT WILL RESULT IN FINISH GRADES AS SHOWN ON THE DRAWINGS REGARDLESS OF THE QUANTITIES SHOWN HEREIN.

**SIGN NOTES:**  
1. ALL SIGN POST AND BACK OF SIGNS THAT ARE TO BE PAINTED BLACK SHALL USE A PAINT SYSTEM THAT PROVIDES A MINIMUM 7 YEAR LIFE EXPECTANCY, MAY USE:  
a) "CARBOLINE RUSTBOND" BASE AT 1-2 MILS THICK, "CARBOLINE B93 93" MID-LAYER AT 3-5 MILS THICK, "CARBOLINE 133 HB" TOP COAT OR APPROVED EQUAL, OR  
b) ELECTROSTATIC APPLIED, BLACK POWDER COATED AND BAKED ON PAINT SYSTEM AT 2-3 MILS THICKNESS OR APPROVED EQUAL  
2. ALL SIGN LOCATIONS AND SIZES MUST BE APPROVED BY THE ENGINEERING DIVISION PRIOR TO INSTALLATION.  
3. STREET NAME SIGN PLATES SHALL BE 9 INCHES WIDE FLAT, BOLT TOGETHER FOR ANY ARTERIAL INTERSECTIONS AND 6 INCHES WIDE EXTRUDED ALUMINUM PANELS FOR ALL MINOR AND COLLECTOR ROADS. TYPICAL LENGTHS FOR MINOR AND COLLECTOR SIGNS SHALL BE 24, 30 & 36 INCH LENGTHS, OR LONGER AS NEEDED, TO ACCOMMODATE STREET NAME.  
4. SIGN LEGEND SHALL BE 7 INCH 3M ENGINEER GRADE SHEETING (OR APPROVED EQUAL) WHITE REFLECTIVE WITH THE CITY OF O'FALLON LOGO WITH 6 IN. BLACK NON-REFLECTIVE LETTERS FOR ARTERIALS AND 4 IN. SIGN LEGEND FOR MINOR AND COLLECTOR ROADS WITH 4 IN. LETTERS. ALL REFLECTIVE SHEETING SHALL MEET AND OR EXCEED ASTM D 4956 SPEC, TYPE 3 OR HIGHER (HIGH INTENSITY OR DIAMOND GRADE).  
5. SIGN POSTS SHALL BE HEAVY "U" CHANNEL (2 LBS./FT) PAINTED BLACK STEEL POSTS FOR COLLECTOR/MINOR STREETS. ARTERIAL STREETS SHALL HAVE 2" SQUARE POSTS WITH BREAKAWAY ASSEMBLY.  
6. SIGN POSTS SHALL EXTEND A MINIMUM OF 30 INCHES IN THE GROUND AND PLUMB  
7. THE CONTRACTOR SHALL BE RESPONSIBLE FOR VERIFICATION OF UNDERGROUND UTILITIES AND STRUCTURES SHOWN OR NOT SHOWN. PLEASE CONTACT CITY FOR LOCATION OF CITY UTILITIES NOT FOUND BY DIG-RITE SERVICES.  
8. SIGNS SHALL NOT CREATE A SITE DISTANCE PROBLEM OR CONFLICT WITH PEDESTRIAN TRAFFIC.  
9. ALL SIGNS UNLESS OTHERWISE STATED, SHOULD BE CONSTRUCTED AND INSTALLED PER MUTCD.

### SIGN LEGEND

SIGN NO.	SIGN	MUTCD CODE
S-1	NO LEFT TURN	R3-2
S-2	RIGHT TURN ONLY	R3-5
S-3	YIELD	R1-2
S-4	ONE WAY	RB-1

REFER TO SHOULDER WORK AND LANE CLOSURE DETAILS FOR CONSTRUCTION SIGNAGE REQUIRED FOR WORK WITHIN THE RIGHT-OF-WAY



### NOTICE TO CONTRACTOR

UNDERGROUND FACILITIES, STRUCTURES AND UTILITIES HAVE BEEN PLOTTED FROM AVAILABLE RECORDS. THEREFORE, THE LOCATIONS OF ANY UNDERGROUND FACILITIES SHOWN HEREON MUST BE CONSIDERED APPROXIMATE. PRIOR TO BEGINNING WORK ON THE SITE, IT IS THE RESPONSIBILITY OF THE CONTRACTOR TO DETERMINE THE EXACT LOCATION OF THESE FACILITIES, ALONG WITH ANY IN EXISTENCE THAT ARE NOT SHOWN; TO VERIFY THEIR LOCATION BOTH HORIZONTALLY AND VERTICALLY (IN ACCORDANCE WITH THE REQUIREMENTS OF THE RESPECTIVE UTILITY/FACILITY OWNER); AND TO VERIFY THAT MINIMUM CLEARANCES AND COVER REQUIREMENTS BETWEEN THE EXISTING FACILITIES AND THE PROPOSED WORK WILL BE MET.



CITY FILE NUMBER: 6901.02

**AC TRUCKING, Inc.**  
10779 Page Ave.  
St. Louis, MO 63132  
P: 314.427.1800  
F: 314.427.1801

**Vance Engineering, Inc.**  
10779 Page Ave.  
St. Louis, MO 63132  
P: 314.427.1800  
F: 314.427.1801

**AC TRUCKING, INC.**  
**SITE AND GRADING PLAN**

REVISED  
6-15-10 VANCE REV  
8-2-10 CITY COMM'TS  
8-16-10 CITY COMM'TS

**06071**  
6/8/10  
**3 OF 5**  
COPYRIGHT 2010