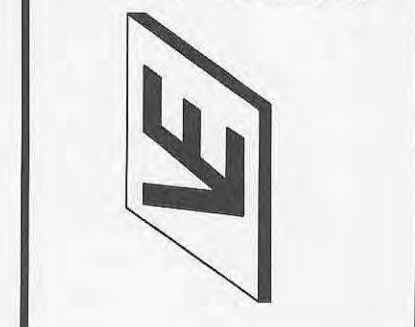


MAY 10 2007  
 THE WORK PREPARED BY OR UNDER THE SUPERVISION OF THE ENGINEER IS LIMITED TO THE PROJECT AND SITE SPECIFICALLY IDENTIFIED HEREON. IT IS NOT TO BE USED FOR ANY OTHER PROJECT OR SITE WITHOUT THE WRITTEN CONSENT OF THE ENGINEER. THE ENGINEER DOES NOT WARRANT THE ACCURACY OF ANY INFORMATION PROVIDED BY OTHERS NOR THE ADEQUACY OF ANY DESIGN OR CONSTRUCTION METHOD OR MATERIALS SPECIFIED HEREON. THE ENGINEER'S LIABILITY IS LIMITED TO THE PROFESSIONAL FEES RECEIVED FOR THIS DESIGN AND CONSTRUCTION OF THE PROJECT.

**AC TRUCKING**  
 #2 COMMERCE DR  
 O'FALLON, MO 63366  
 P: 636.278.5666  
 F: 636.278.8111

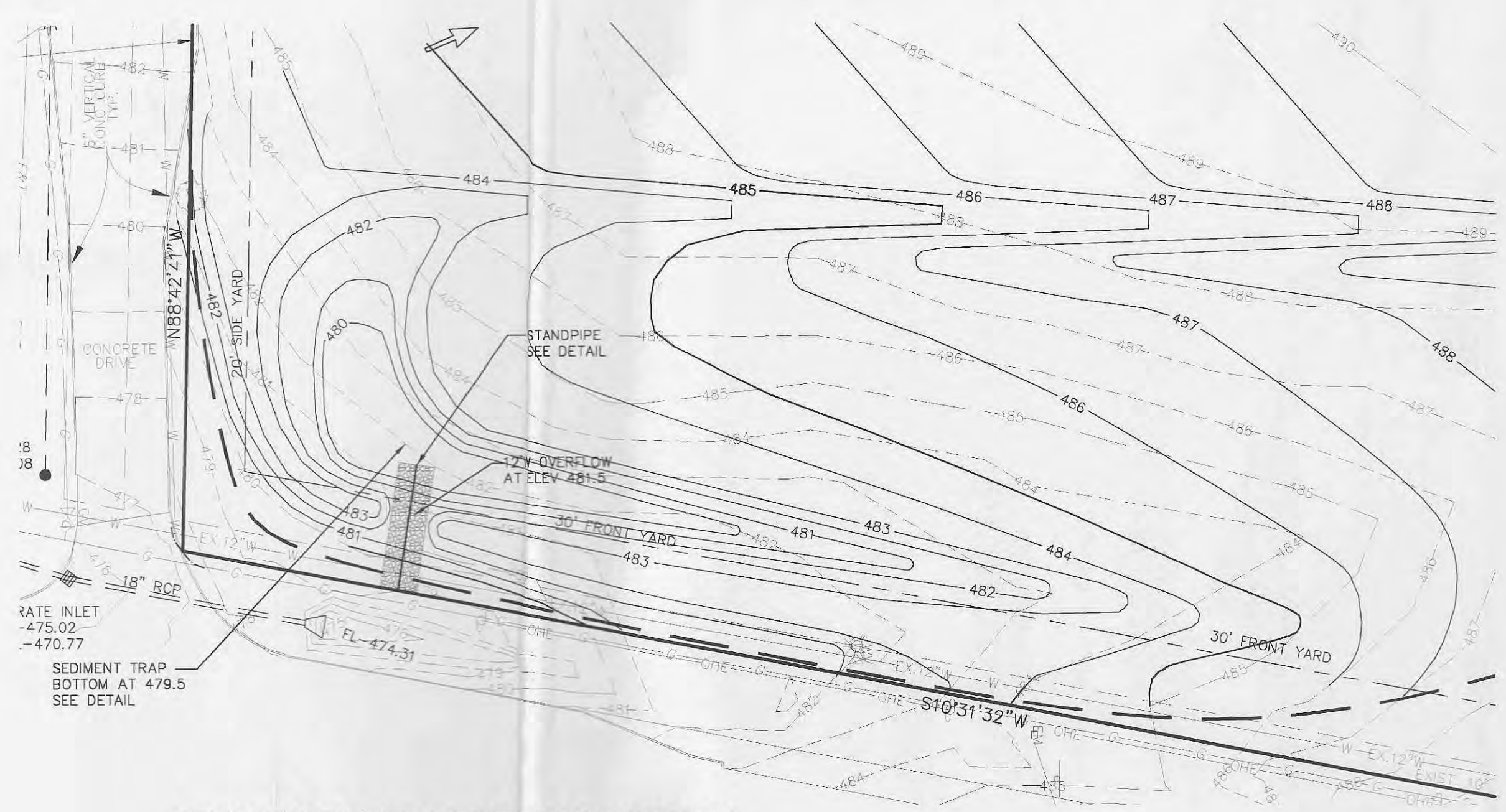
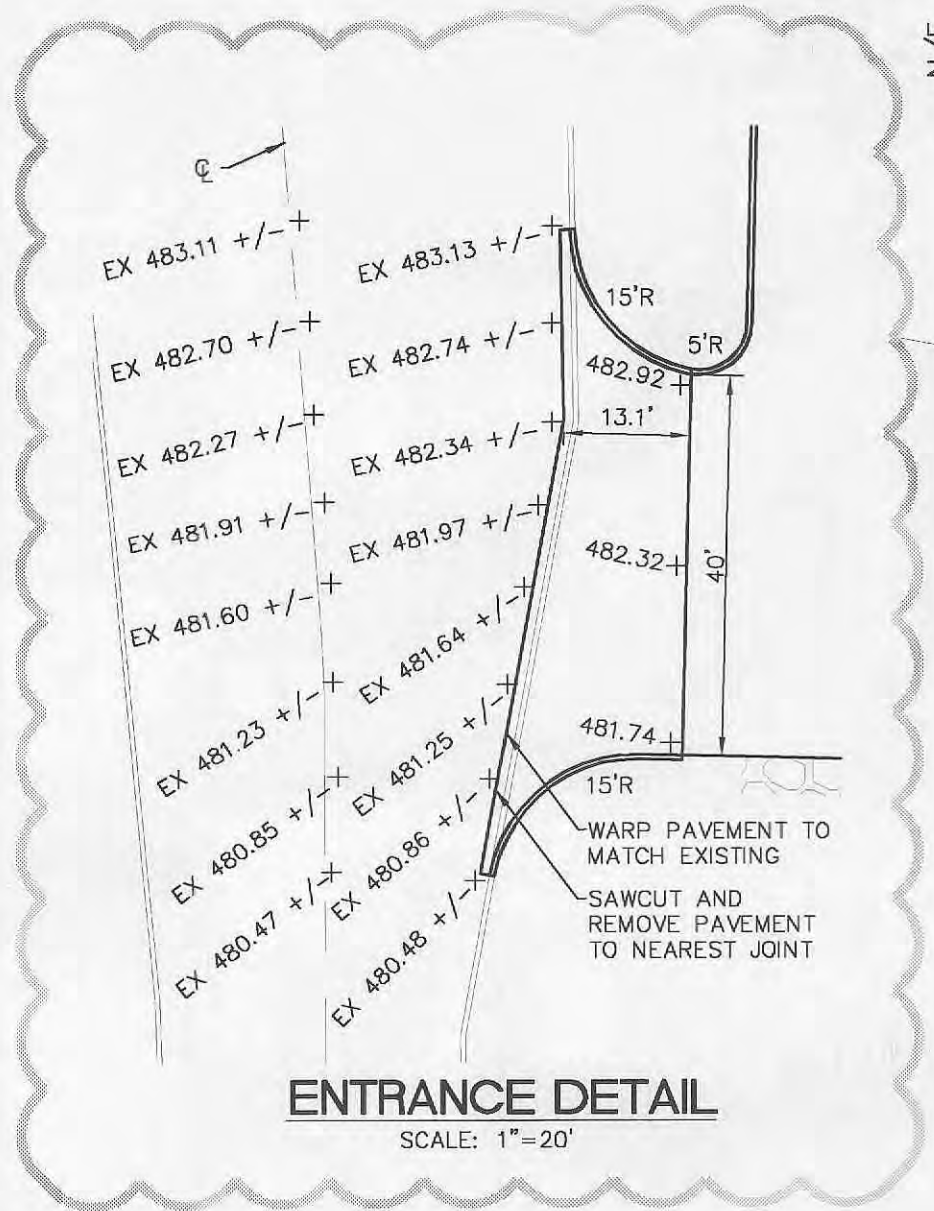
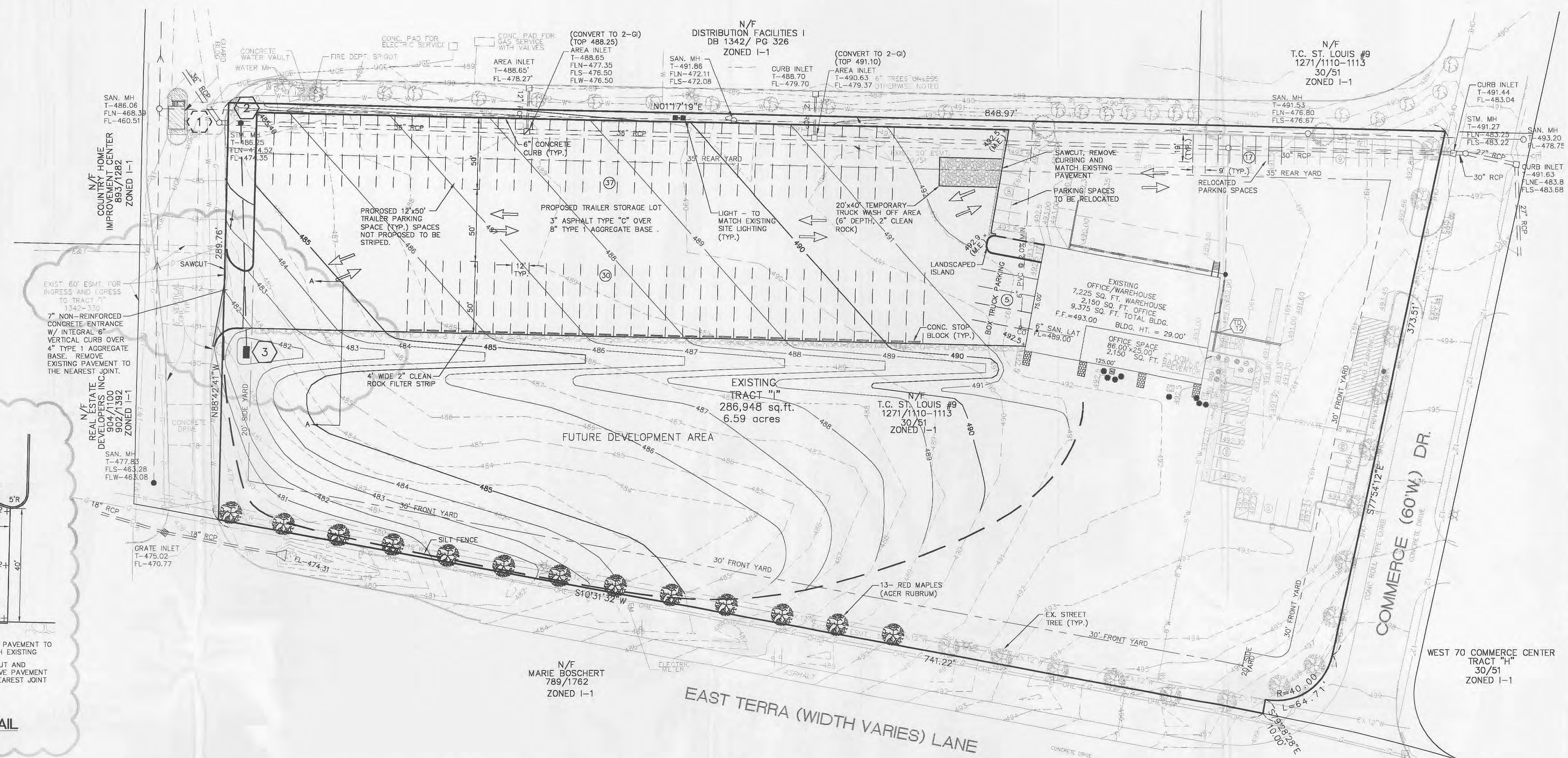
**Vance Engineering, Inc.**  
 1600 N. Watson Road  
 Suite 202  
 St. Louis, MO 63132  
 P: 314.427.1800  
 F: 314.427.1801



**AC TRUCKING, INC.**  
**SITE AND GRADING PLAN**

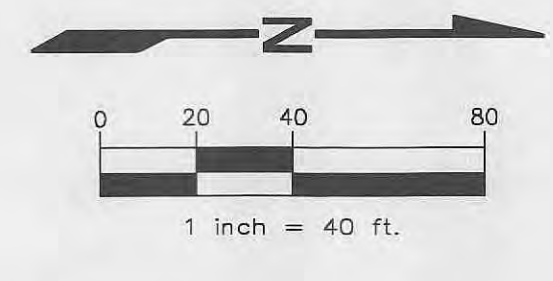
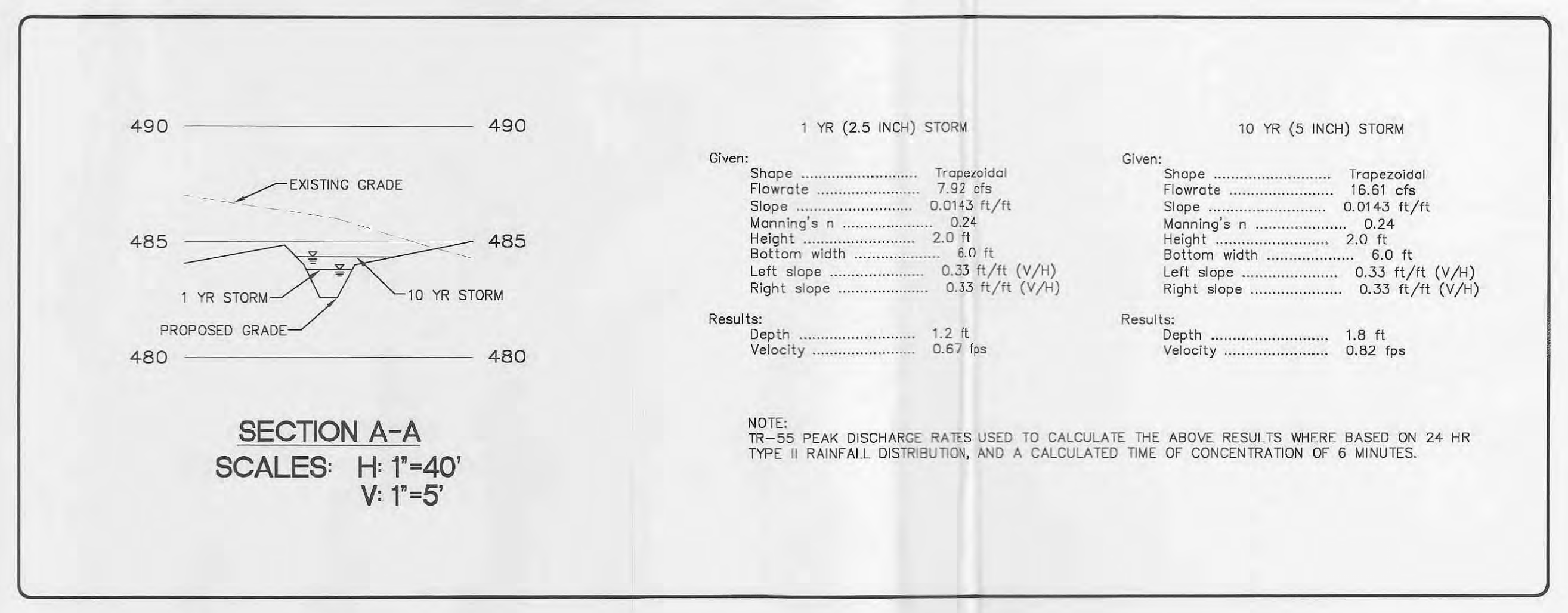
REVISED  
 5-8-07 CITY COMMT'S  
 4-20-07 OWNER REV  
 3-9-07 CITY COMMT'S

**06071**  
 BASEMAP NO.  
 MSD P -  
 11/16/06  
**2 OF 4**  
 COPYRIGHT 2006



**SILT LOADING CALCULATIONS AND NOTES**  
 4.04 AC. TRIBUTARY TO SEDIMENT TRAP  
 4.04 AC. x 1800 CF/AC = 7270 CF  
 1 YEAR STORM VOLUME = 4500 CF  
 SILT STORAGE VOLUME PROVIDED = 8,000 CF @ ELEV. 481.5  
 NOTES:  
 REMOVAL OF SEDIMENT REQUIRED WHEN SEDIMENT REACHES ELEV. 480.5

SEDIMENT TRAP WEIR 15 YEAR STORM		SEDIMENT TRAP WEIR 20 YEAR STORM	
Given:	Flowrate ..... 7.55 cfs	Given:	Flowrate ..... 10.18 cfs
	Coefficient ..... 0.65		Coefficient ..... 0.65
	Height ..... 1.5 ft		Height ..... 1.5 ft
	Width ..... 12 ft		Width ..... 12 ft
Results:	Depth of Flow ..... 0.32 ft	Results:	Depth of Flow ..... 0.39 ft
	Velocity ..... 1.97 fps		Velocity ..... 2.17 fps



**BEFORE YOU DIG - DRILL - BLAST**  
 1-800-344-7483  
 (TOLL FREE)  
 MISSOURI ONE CALL SYSTEM, INC.