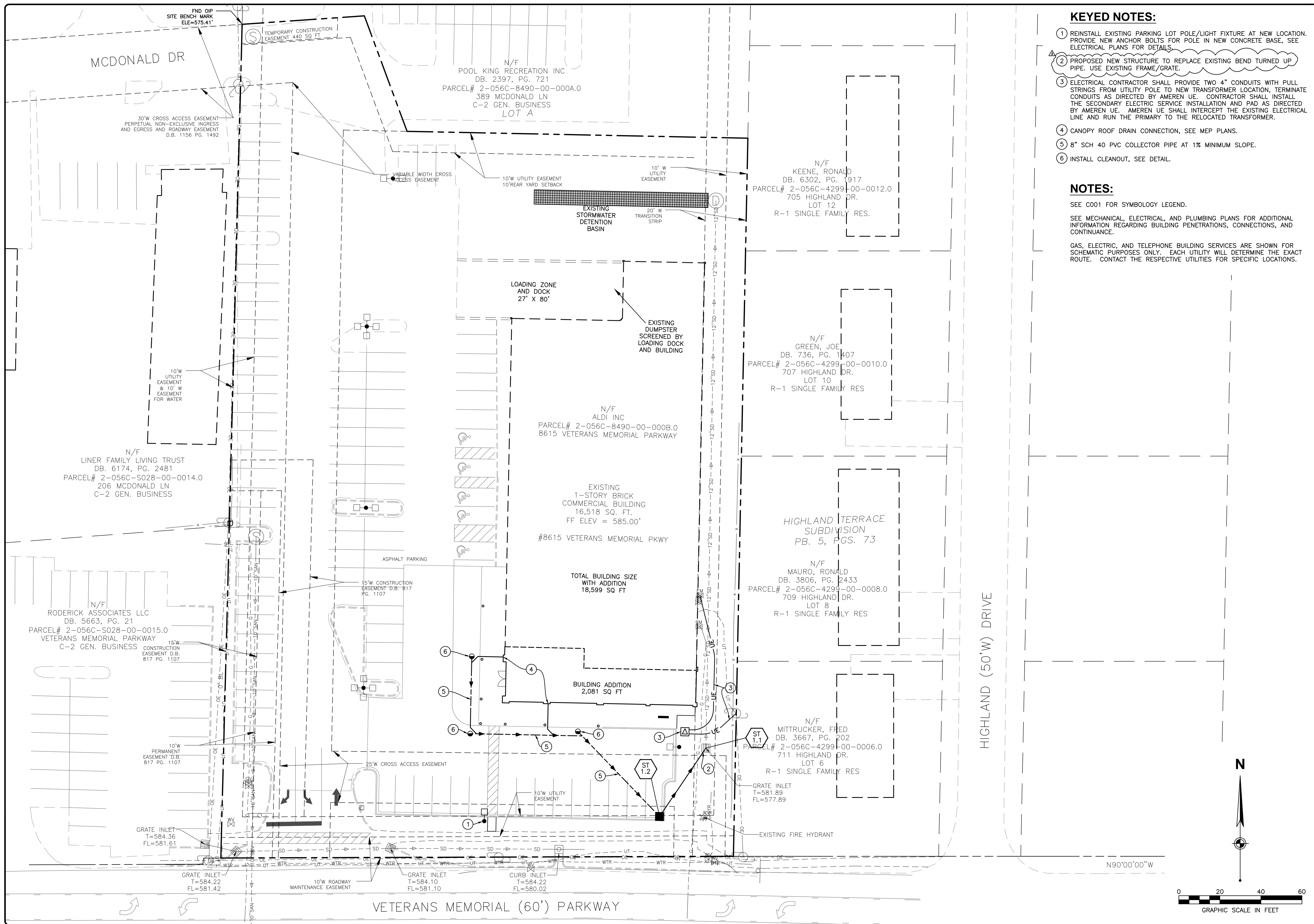


Drawing name: X:\Sawyer\Engineering\Working\O'Fallon, MO\Drawings\2017\08-01\SitePlan\2016-130-UTL.dwg Plotted on: Aug 26, 2017 - 4:28pm Plotted by: User



- KEYED NOTES:**
- REINSTALL EXISTING PARKING LOT POLE/LIGHT FIXTURE AT NEW LOCATION. PROVIDE NEW ANCHOR BOLTS FOR POLE IN NEW CONCRETE BASE, SEE ELECTRICAL PLANS FOR DETAILS.
  - PROPOSED NEW STRUCTURE TO REPLACE EXISTING BEND TURNED UP PIPE. USE EXISTING FRAME/GRATE.
  - ELECTRICAL CONTRACTOR SHALL PROVIDE TWO 4" CONDUITS WITH PULL STRINGS FROM UTILITY POLE TO NEW TRANSFORMER LOCATION, TERMINATE CONDUITS AS DIRECTED BY AMEREN UE. CONTRACTOR SHALL INSTALL THE SECONDARY ELECTRIC SERVICE INSTALLATION AND PAD AS DIRECTED BY AMEREN UE. AMEREN UE SHALL INTERCEPT THE EXISTING ELECTRICAL LINE AND RUN THE PRIMARY TO THE RELOCATED TRANSFORMER.
  - CANOPY ROOF DRAIN CONNECTION, SEE MEP PLANS.
  - 8" SCH 40 PVC COLLECTOR PIPE AT 1% MINIMUM SLOPE.
  - INSTALL CLEANOUT, SEE DETAIL.

**NOTES:**

SEE C001 FOR SYMBOLGY LEGEND.

SEE MECHANICAL, ELECTRICAL, AND PLUMBING PLANS FOR ADDITIONAL INFORMATION REGARDING BUILDING PENETRATIONS, CONNECTIONS, AND CONTINUANCE.

GAS, ELECTRIC, AND TELEPHONE BUILDING SERVICES ARE SHOWN FOR SCHEMATIC PURPOSES ONLY. EACH UTILITY WILL DETERMINE THE EXACT ROUTE. CONTACT THE RESPECTIVE UTILITIES FOR SPECIFIC LOCATIONS.

ISSUE	REMARKS/DATE
1	REVISION 3 (8/25/2017)

**Aldi, Inc.**  
 475 Pearl Drive  
 O'Fallon, Missouri 63376  
 Ph. (636) 278-4700

**SAWYER ENGINEERING, INC.**  
 P.O. Box 157  
 Gillespie, Illinois 62033  
 Phone 314-800-5914  
 Fax 618-882-6113  
 SawyerEngr.com

**ALDI  
 O'FALLON, MO**  
 8615 Veterans Memorial Parkway, O'Fallon, Missouri 63366

**UTILITY PLAN**

Date: 8/25/2017  
 John P. Sawyer, PE  
 License No. E-2001031672  
 Civil Engineer

Job Number: 2016-130  
 Date: 8/25/2017  
 Designed: SWU Sheet  
 Drawn: SWU **C400**  
 Checked: JPS

