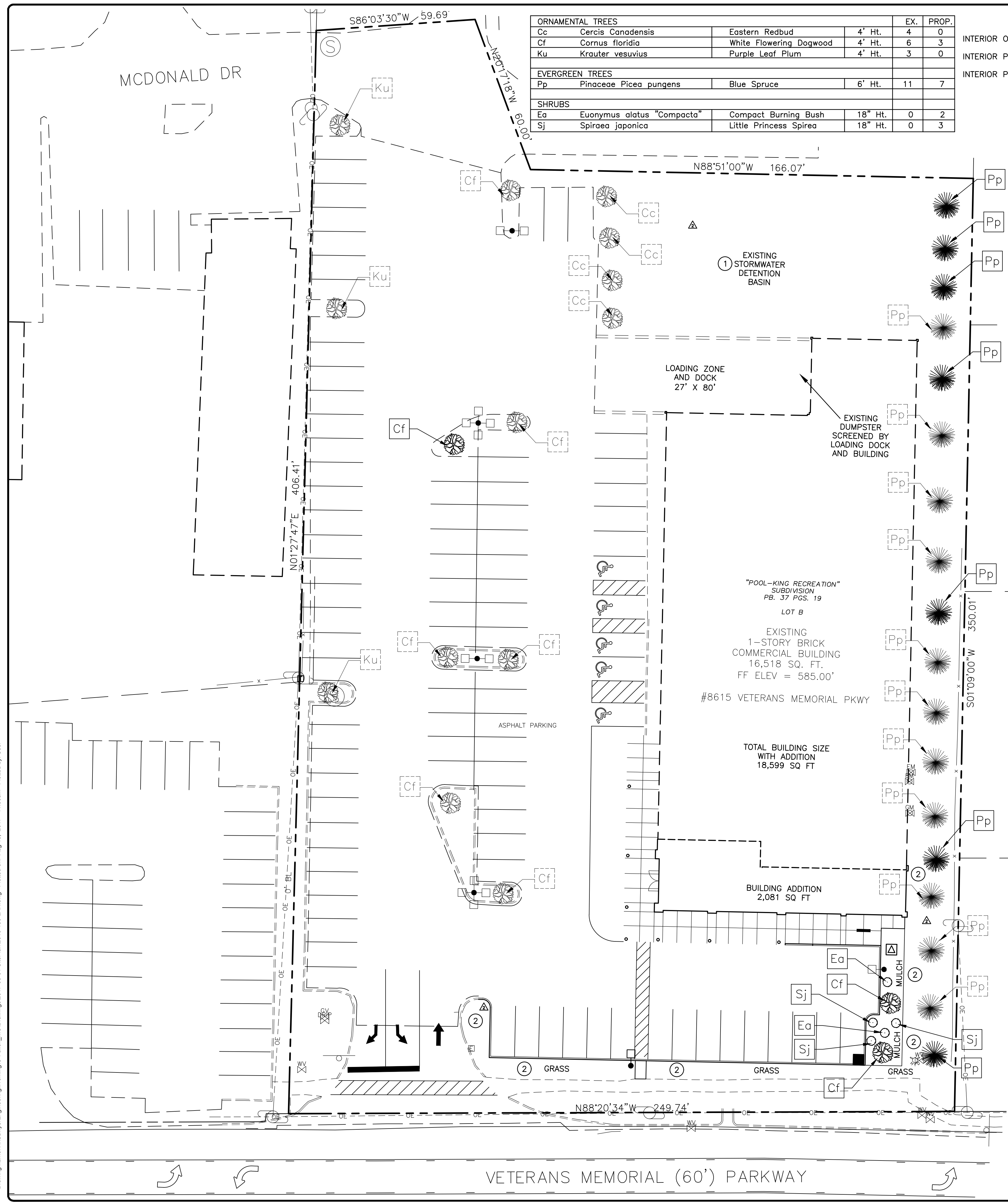


Drawing name: X:\Sawyer\Engineering\Working\O'Fallon, MO\Drawings\2017-06-07-SitePlan\2016-130-LAN.dwg Plotted on: Aug 15, 2017 - 11:30am Plotted by: User

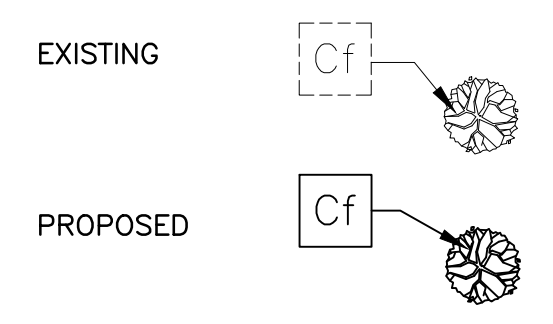


ORNAMENTAL TREES				EX.	PROP.
Cc	Cercis Canadensis	Eastern Redbud	4' Ht.	4	0
Cf	Cornus florida	White Flowering Dogwood	4' Ht.	6	3
Ku	Krauter vesuvius	Purple Leaf Plum	4' Ht.	3	0
EVERGREEN TREES					
Pp	Pinaceae Picea pungens	Blue Spruce	6' Ht.	11	7
SHRUBS					
Ea	Euonymus alatus "Compacta"	Compact Burning Bush	18" Ht.	0	2
Sj	Spiraea japonica	Little Princess Spirea	18" Ht.	0	3

LANDSCAPING CALCULATIONS:

INTERIOR OF PARKING LOT = 93 PARKING SPACES X 270 SF = 25,110 SF
 INTERIOR PARKING LOT LANDSCAPING = 6% OF INTERIOR PARKING LOT = 1,506 SF
 INTERIOR PARKING LOT LANDSCAPING PROVIDED = 1,545 SF

LANDSCAPING LEGEND:



KEYED NOTES:

- ① STORMWATER DETENTION BASIN WORK, SEE GRADING PLAN.
- ② RESTORE GRASS AREAS DISTURBED BY CONSTRUCTION.

LANDSCAPE NOTES:

ALL LAWNS AND DISTURBED AREAS NOT COVERED BY BUILDING OR PAVEMENT SHALL BE PLANTED WITH SOD.

PRIOR TO APPLICATION OF SEED OR PLANTINGS, ALL DISTURBED AREAS SHALL BE COVERED WITH A MINIMUM OF 4" OF TOPSOIL. TOPSOIL SHALL BE AS DEFINED BY IDOT, AND FREE OF ROCKS, DEBRIS, AND CLODS GREATER THAN 3/4" DIAMETER.

WHERE TURF ABUTS PAVED SURFACES, FINISHED GRADE OF TURF SHALL BE HELD ONE INCH BELOW SURFACE ELEVATION OF TRAIL, SLAB, CURB, ETC.

ALL SHRUB AND GROUND COVER PLANTING AREAS SHALL BE COVERED WITH FOUR INCH THICK LAYER OF SHREDED HARDWOOD BARK MULCH. PRIOR TO MULCHING, ALL BEDS SHALL BE COVERED WITH FIBER MAT WEED BARRIER. BARK MULCH SHALL BE APPROVED BY LANDSCAPE DESIGNER, SHALL BE UNIFORM IN TEXTURE AND COLOR AND SHALL BE OBTAINED FROM SAWMILL OR LUMBERING OPERATIONS. NO UTILITY MULCH OR PROCESSED TREE TRIMMINGS WILL BE ALLOWED.

ALUMINUM EDGING SHALL BE USED TO SEPARATE SHRUBS, PERENNIALS, AND ANNUALS WHERE BEDS MEET TURF UNLESS OTHERWISE NOTED.

AN APPROVED PRE-EMERGENT HERBICIDE (PREEN OR APPROVED EQUAL) SHALL BE APPLIED IN ALL PLANTING AND GROUND COVER BEDS AT RATES SPECIFIED BY MANUFACTURER FOR EACH VARIETY OF PLANT.

NO SUBSTITUTIONS OF PLANT MATERIAL WILL BE ALLOWED. IF PLANTS ARE SHOWN TO BE UNAVAILABLE, THE CONTRACTOR SHALL NOTIFY LANDSCAPE DESIGNER PRIOR TO BID DATE IN WRITING. ALL PLANTS SHALL BE INSPECTED AND TAGGED WITH PROJECT IDENTIFICATION AT NURSERY OR CONTRACTOR'S OPERATION PRIOR TO MOVING TO JOB SITE. PLANTS MAY ALSO BE INSPECTED AND APPROVED OR REJECTED ON THE JOB SITE.

ALL PLANTS ARE TO MEET OR EXCEED THE STANDARDS SET FORTH IN THE "AMERICAN STANDARD FOR NURSERY STOCK", 2004 EDITION, BY THE AMERICAN NURSERY & LANDSCAPE ASSOCIATION.

PLANTS AND ALL OTHER MATERIALS TO BE STORED ON SITE WILL BE PLACED WHERE THEY WILL NOT CONFLICT WITH CONSTRUCTION OPERATIONS AND AS DIRECTED BY OWNER.

ALL LANDSCAPE PLANTINGS TO BE MAINTAINED FOR 90 DAYS FOLLOWING FINAL INSPECTION OF LANDSCAPE DESIGNER. MAINTENANCE SHALL INCLUDE WATERING, WEEDING, CULTIVATING, MULCHING, MOWING AND ALL OTHER NECESSARY OPERATIONS REQUIRED FOR PROPER AND HEALTHY ESTABLISHMENT OF LAWNS AND PLANTINGS.

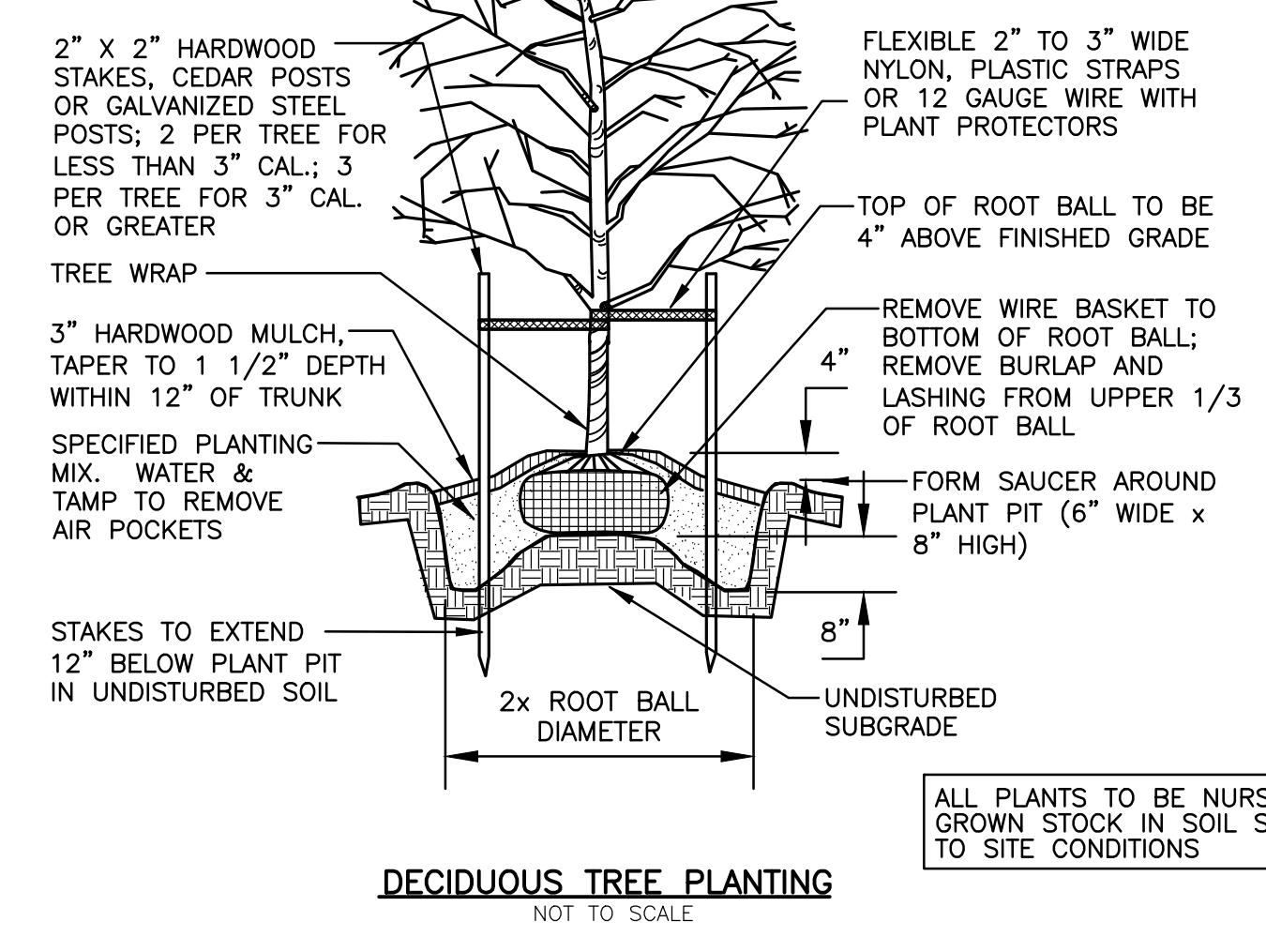
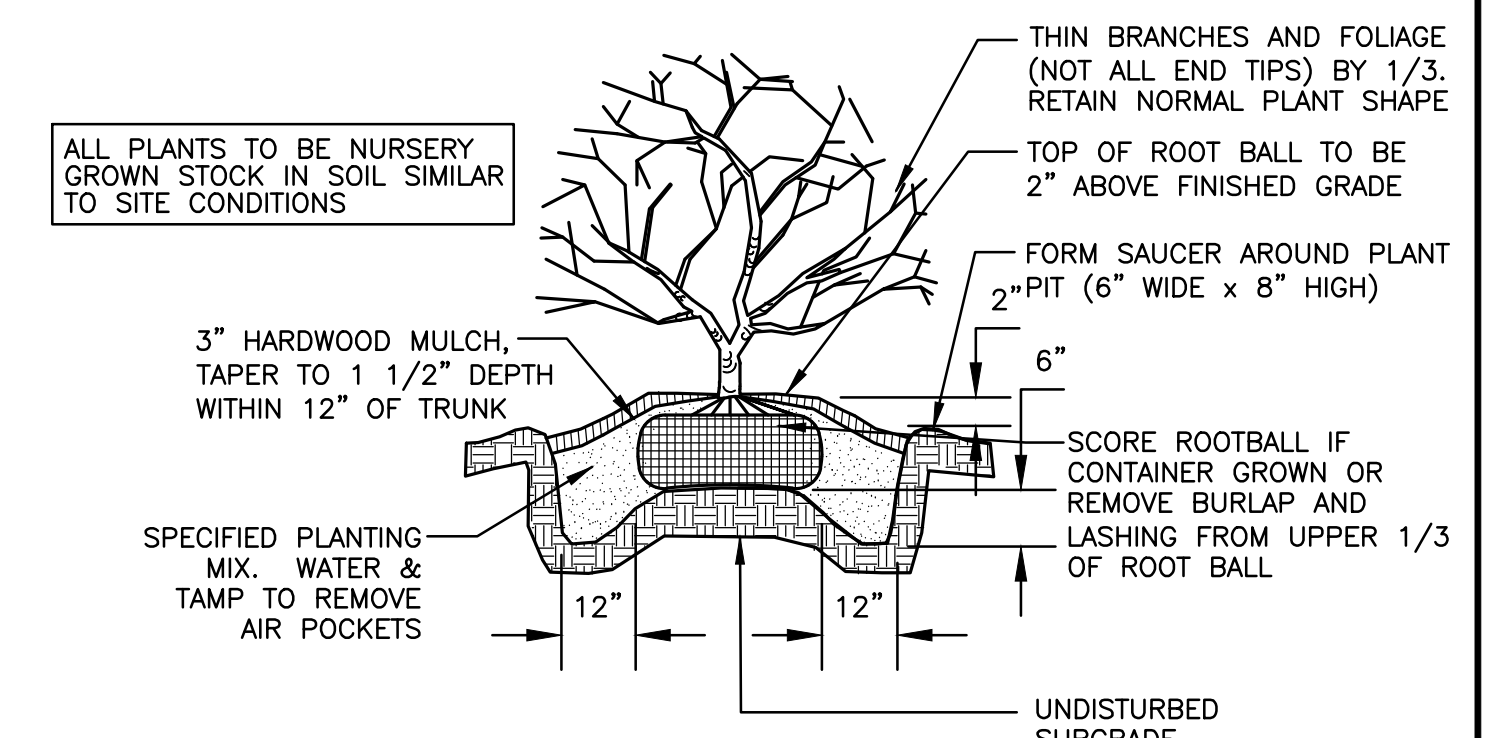
ALL LANDSCAPE PLANTINGS, INCLUDING TRANSPLANTS, SHALL BE GUARANTEED FOR A PERIOD OF ONE YEAR FOLLOWING FINAL INSPECTION BY LANDSCAPE DESIGNER. AT THE END OF THIS PERIOD, PLANT MATERIAL TERMED DEAD OR UNSATISFACTORY BY LANDSCAPE DESIGNER SHALL BE REPLACED AT NO ADDITIONAL CHARGE BY THE LANDSCAPE CONTRACTOR.

ALL SEEDED LAWNS SHALL BE MAINTAINED FOR A PERIOD OF 90 DAYS FOLLOWING FINAL INSPECTION BY A/E AFTER WRITTEN REQUEST FROM LANDSCAPE CONTRACTOR. MAINTENANCE SHALL INCLUDE WATERING, WEEDING, CULTIVATING, MULCHING, MOWING AND ALL OTHER NECESSARY OPERATIONS REQUIRED FOR PROPER AND HEALTHY ESTABLISHMENT OF LAWNS AND PLANTINGS.

ALL LAWNS SHALL BE GUARANTEED TO HAVE A FULL UNIFORM STAND OF ACCEPTABLE GRASS AT END OF ONE YEAR GUARANTEE PERIOD WITH NO BARE SPOTS COMPRISING MORE THAN 2% OF ANY LAWN AREA. ANY AREA SO NOTED WILL HAVE THE SOD REPLACED UNTIL AN ACCEPTABLE STAND OF GRASS IS ESTABLISHED.

FINAL PLACEMENT OF PLANT MATERIALS, MULCH, ETCETERA SHALL BE APPROVED BY LANDSCAPE DESIGNER BEFORE PLANTING OPERATIONS ARE TO PROCEED. ALL TREE LOCATIONS SHALL BE MARKED WITH A WOODEN STAKE INDICATING VARIETY AND SIZE OF TREE. ALL GROUND COVER AND MULCH BED LINES SHALL BE MARKED BY A HIGHLY VISIBLE PAINT LINE WITH OCCASIONAL WOOD STAKES FOR REFERENCE. ALL TAKES SHALL BE REMOVED FOLLOWING PLANTINGS OPERATIONS. LANDSCAPE ARCHITECT RESERVES THE RIGHT TO ADJUST PLANT LOCATIONS ON SITE.

BACKFILL FOR TREE PLANTING SHALL BE 75% APPROVED TOPSOIL AND 25% APPROVED PEAT MOSS. TOP LAYER OF BACKFILL SHALL BE 100% EXISTING TOPSOIL A 5-10-5 ANALYSIS SLOW RELEASE FERTILIZER SHALL BE INCORPORATED INTO BACKFILL AT APPROVED RATES.



ISSUE	REMARKS/DATE
2	REVISION 2 (8/15/2017)

Aldi, Inc.
 475 Pearl Drive
 O'Fallon, Missouri 63376
 Ph. (636) 278-4700

SAWYER ENGINEERING, INC.
 P.O. Box 157
 Gillespie, Illinois 62033
 Phone 314-800-5914
 Fax 618-982-6113
 SawyerEngr.com

ALDI O'FALLON, MO
 8615 Veterans Memorial Parkway, O'Fallon, Missouri 63366
LANDSCAPE PLAN

Professional Engineer's seal and signature placed on this sheet apply only to the material and items shown on this sheet. All drawings, instructions or other documents not exhibiting the seal and signature shall not be considered prepared by the engineer, and the engineer hereby disclaims any and all responsibility for such plans, drawings or documents not exhibiting the seal and signature.

JOHN P. SAWYER
 LICENSED PROFESSIONAL ENGINEER
 NUMBER E-2001031672

Date: 8/15/2017
 John P. Sawyer, PE
 License No. E-2001031672
 Civil Engineer

Job Number: 2016-130
 Date: 8/15/2017
 Designed: SWU Sheet: C600
 Drawn: SWU
 Checked: JPS

