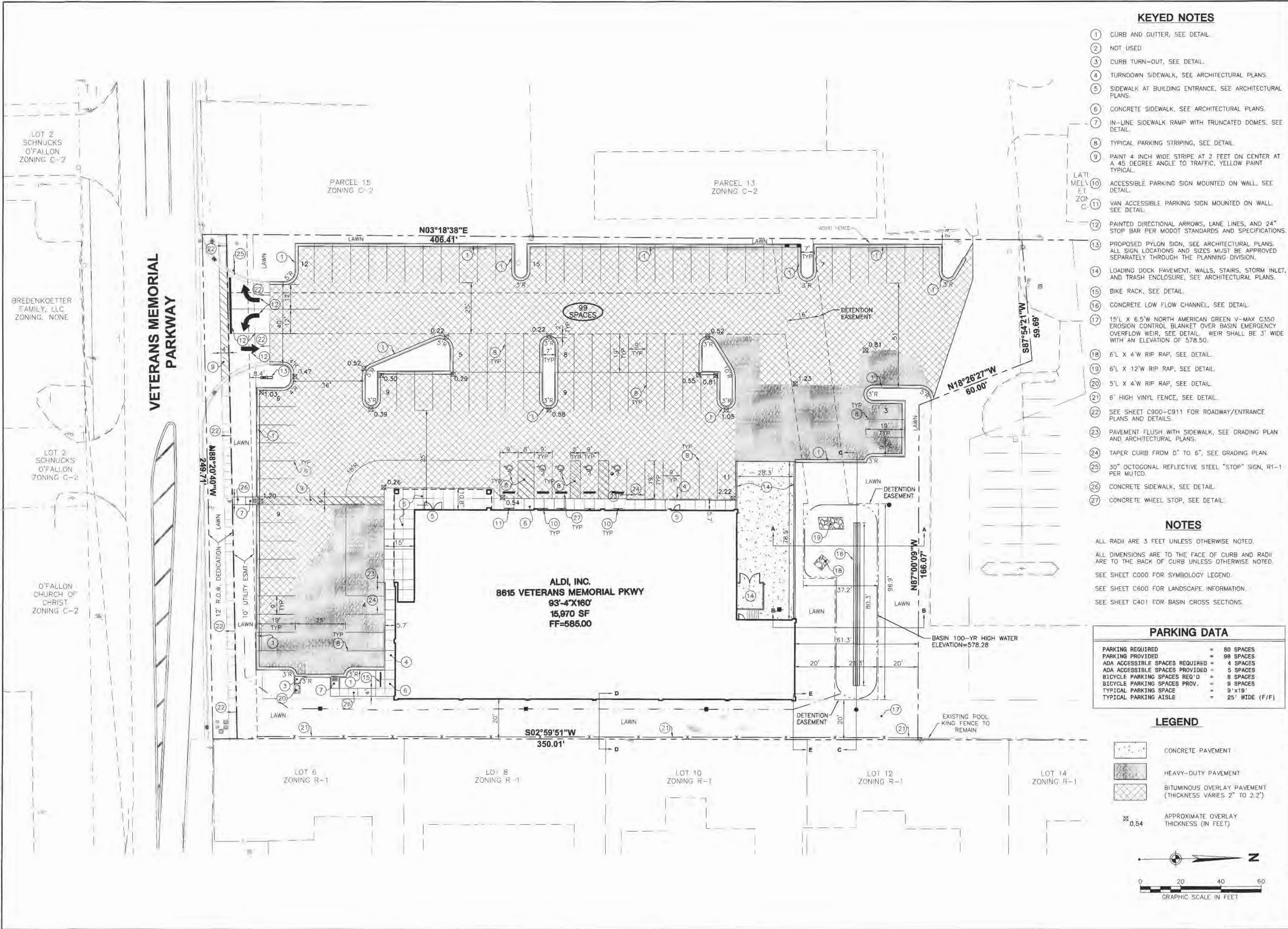


D:\SD\Projects\ALDI\ALDI - O'FALLON\ALDI - O'FALLON.dwg 64702 - SIT.dwg, Plotted By: Bruce, Plotted: Jul 07, 2006 - 3:16pm



KEYED NOTES

- 1 CURB AND GUTTER, SEE DETAIL.
- 2 NOT USED
- 3 CURB TURN-OUT, SEE DETAIL.
- 4 TURNDOWN SIDEWALK, SEE ARCHITECTURAL PLANS.
- 5 SIDEWALK AT BUILDING ENTRANCE, SEE ARCHITECTURAL PLANS.
- 6 CONCRETE SIDEWALK, SEE ARCHITECTURAL PLANS.
- 7 IN-LINE SIDEWALK RAMP WITH TRUNCATED DOMES, SEE DETAIL.
- 8 TYPICAL PARKING STRIPING, SEE DETAIL.
- 9 PAINT 4 INCH WIDE STRIPE AT 2 FEET ON CENTER AT A 45 DEGREE ANGLE TO TRAFFIC, YELLOW PAINT TYPICAL.
- 10 ACCESSIBLE PARKING SIGN MOUNTED ON WALL, SEE DETAIL.
- 11 VAN ACCESSIBLE PARKING SIGN MOUNTED ON WALL, SEE DETAIL.
- 12 PAINTED DIRECTIONAL ARROWS, LANE LINES, AND 24" STOP BAR PER MODOT STANDARDS AND SPECIFICATIONS.
- 13 PROPOSED PYLON SIGN, SEE ARCHITECTURAL PLANS. ALL SIGN LOCATIONS AND SIZES MUST BE APPROVED SEPARATELY THROUGH THE PLANNING DIVISION.
- 14 LOADING DOCK PAVEMENT, WALLS, STAIRS, STORM INLET, AND TRASH ENCLOSURE, SEE ARCHITECTURAL PLANS.
- 15 BIKE RACK, SEE DETAIL.
- 16 CONCRETE LOW FLOW CHANNEL, SEE DETAIL.
- 17 15' L X 6.5' W NORTH AMERICAN GREEN V-MAX C350 EROSION CONTROL BLANKET OVER BASIN EMERGENCY OVERFLOW WEIR, SEE DETAIL. WEIR SHALL BE 3' WIDE WITH AN ELEVATION OF 578.50.
- 18 6' L X 4' W RIP RAP, SEE DETAIL.
- 19 6' L X 12' W RIP RAP, SEE DETAIL.
- 20 5' L X 4' W RIP RAP, SEE DETAIL.
- 21 6' HIGH VINYL FENCE, SEE DETAIL.
- 22 SEE SHEET C900-C911 FOR ROADWAY/ENTRANCE PLANS AND DETAILS.
- 23 PAVEMENT FLUSH WITH SIDEWALK, SEE GRADING PLAN AND ARCHITECTURAL PLANS.
- 24 TAPER CURB FROM 0" TO 6", SEE GRADING PLAN.
- 25 30" OCTAGONAL REFLECTIVE STEEL "STOP" SIGN, R1-1 PER MUTCD.
- 26 CONCRETE SIDEWALK, SEE DETAIL.
- 27 CONCRETE WHEEL STOP, SEE DETAIL.

NOTES

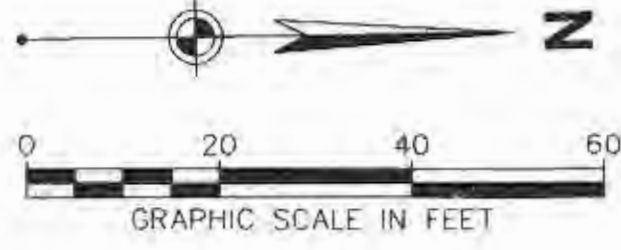
ALL RADII ARE 3 FEET UNLESS OTHERWISE NOTED.
 ALL DIMENSIONS ARE TO THE FACE OF CURB AND RADII ARE TO THE BACK OF CURB UNLESS OTHERWISE NOTED.
 SEE SHEET C000 FOR SYMBOLOGY LEGEND.
 SEE SHEET C600 FOR LANDSCAPE INFORMATION.
 SEE SHEET C401 FOR BASIN CROSS SECTIONS.

PARKING DATA

| | | |
|--------------------------------|---|----------------|
| PARKING REQUIRED | = | 80 SPACES |
| PARKING PROVIDED | = | 99 SPACES |
| ADA ACCESSIBLE SPACES REQUIRED | = | 4 SPACES |
| ADA ACCESSIBLE SPACES PROVIDED | = | 5 SPACES |
| BICYCLE PARKING SPACES REQ'D | = | 8 SPACES |
| BICYCLE PARKING SPACES PROV. | = | 9 SPACES |
| TYPICAL PARKING SPACE | = | 9'x19' |
| TYPICAL PARKING AISLE | = | 25' WIDE (F/F) |

LEGEND

- CONCRETE PAVEMENT
- HEAVY-DUTY PAVEMENT
- BITUMINOUS OVERLAY PAVEMENT (THICKNESS VARIES 2" TO 2.2")
- APPROXIMATE OVERLAY THICKNESS (IN FEET)



| No. | DATE | REVISION |
|-----|------|----------|
| | | |
| | | |

PROJECT NO.: 64702

DATE: APR 06

DES.: JPS

DR.: DAD

CKD.: JPS

WOOLPERT, INC.
 1910 Pine Street, Suite 420
 Saint Louis, Missouri
 63103-2254
 314.241.3005
 314.436.0884

ALDI - O'FALLON, MO
ALDI, INC.
 8615 VETERANS MEMORIAL PARKWAY
 O'FALLON, MISSOURI 63366

SITE PLAN

SHEET NO. **C200**

REV. PER CITY COMMENTS
 6/5/06
 4/24/06 OWNER/AGENCY REVIEW