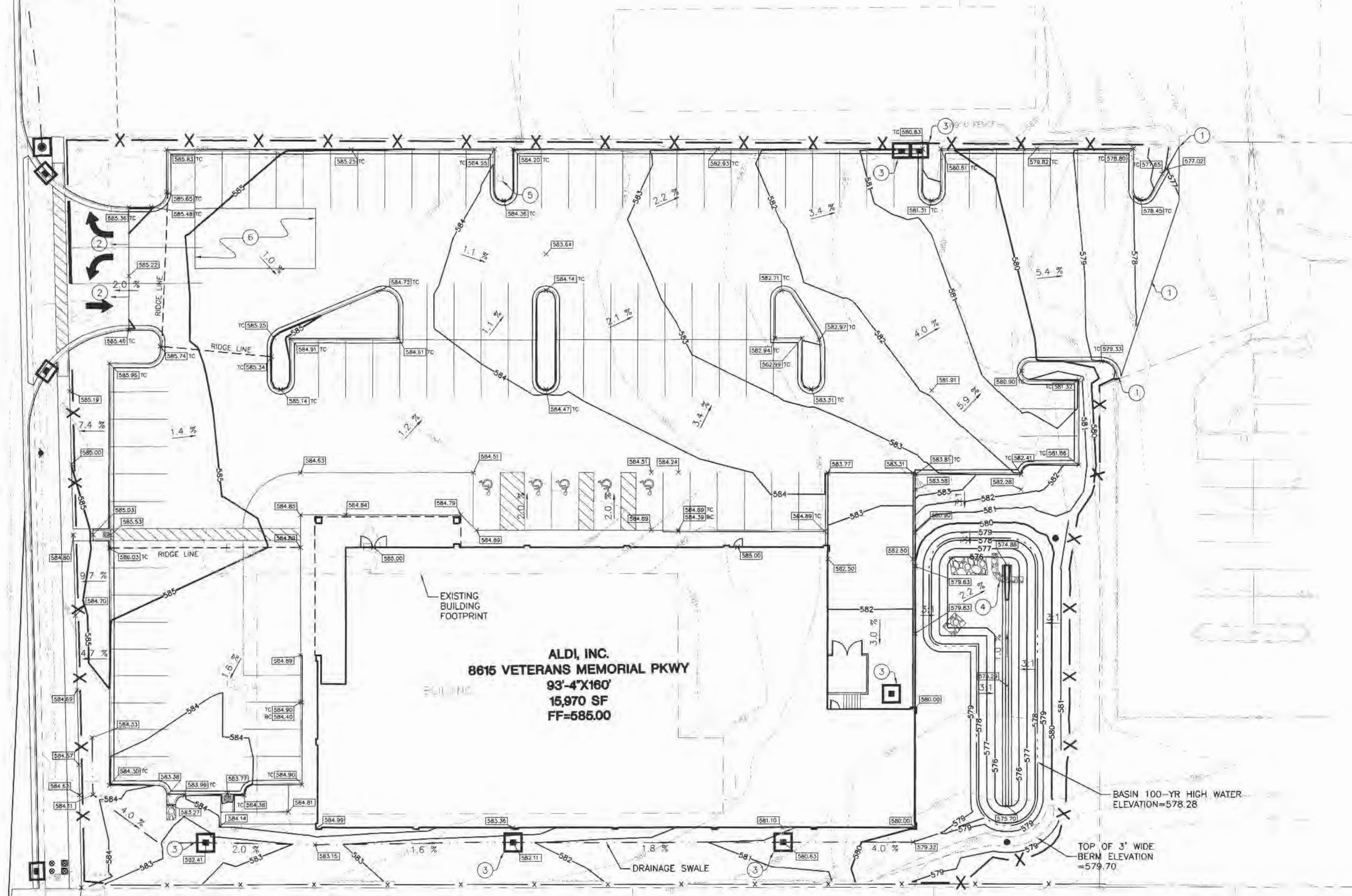


VETERANS MEMORIAL PARKWAY



KEYED NOTES

- 1 MATCH EXISTING GRADE.
- 2 SEE SHEET C900-C911 FOR INTERSECTION DETAILS AND GRADES.
- 3 INLET BOX PROTECTION. SEE DETAIL.
- 4 ROCK CHECK DAM IN BASIN TO 576.50 FOR SEDIMENTATION CONTROL UNTIL SITE IS STABILIZED.
- 5 ADJUST MANHOLE LID TO GRADE.
- 6 20'x40' TEMPORARY TRUCK WASH OFF AREA.

NOTES

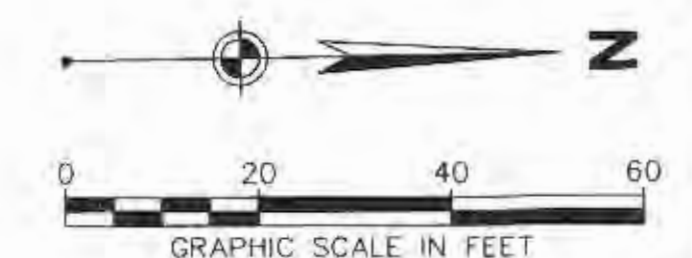
SEE SHEET C000 FOR SYMBOLOLOGY LEGEND.
 SEE SHEET C301 FOR EROSION CONTROL MEASURES.
 SEE SHEET C600 FOR LANDSCAPE INFORMATION.

LEGEND

- SILTATION CONTROL FENCE. SEE DETAIL
- INLET PROTECTION
- ROCK CHECK DAM
- RIP RAP
- TOP BACK OF CURB
- BOTTOM-FACE OF CURB
- SPOT SHOT

BENCHMARK

- SITE BM:
 TOP OF REBAR SET FLUSH WITH GROUND.
 ELEV: 581.97 (NAVD 88)
 USGS DATUM OBTAINED BY GPS OBSERVATION



NO.	DATE	REVISION

PROJECT NO: 64702
 DATE: APR 06
 DES: JPS
 DR: CAD
 CKD: JPS

WOOLPERT, INC.
 1910 Pine Street, Suite 420
 Saint Louis, Missouri
 63103-2254
 314.241.3005
 314.436.0864
WOOLPERT

ALDI - O'FALLON, MO
ALDI, INC.
 8615 VETERANS MEMORIAL PARKWAY
 O'FALLON, MISSOURI 63366
GRADING/EROSION CONTROL PLAN

SHEET NO.
C300

G:\50\Projects\ALDI\ALDI CIVIL\O'Fallon, Mo\Design 64702\dwg\64702-GRA.dwg, Plotted By: bruced, Plotted: Jul 07, 2006 - 3:13pm