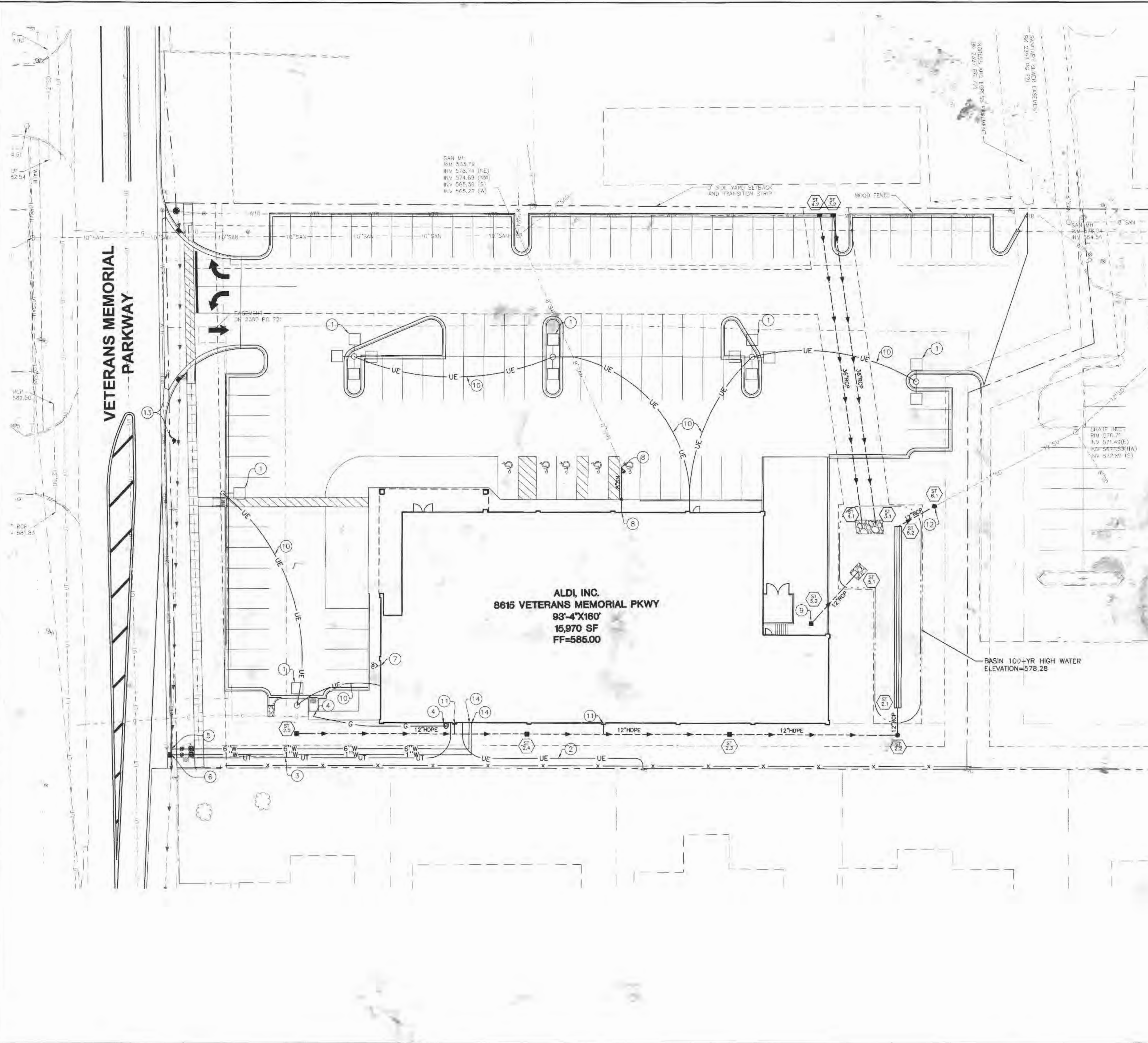


G:\SD\Projects\ALDI\ALDI Civil\O'Fallon, Mo\Design\64702\64702-UTL.dwg, Plotted By: Bruce, Plotted: Jul 07, 2006 - 3:05pm



VETERANS MEMORIAL PARKWAY

ALDI, INC.
8615 VETERANS MEMORIAL PKWY
93'-4"X180'
15,970 SF
FF=585.00

KEYED NOTES

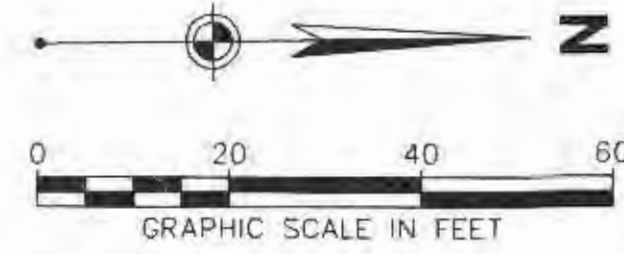
- 1 LIGHT POLE AND BASE, SEE ELECTRICAL PLANS. LIGHT POLE HEIGHT SHALL BE 25'.
- 2 INSTALL CONDUIT FROM EXISTING POWER POLE AND TRANSFORMER TO BUILDING PER AMEREN UE SPECIFICATIONS.
- 3 INSTALL UNDERGROUND TELEPHONE SERVICE FROM EXISTING TELEPHONE PEDESTAL TO BUILDING. COORDINATE SERVICE WITH TELEPHONE COMPANY.
- 4 COORDINATE GAS SERVICE AND METER LOCATION WITH LACLEDE GAS COMPANY. INTERCEPT EXISTING GAS SERVICE LINE AS ALLOWED BY LACLEDE GAS.
- 5 TAP EXISTING WATERMAIN FOR 6" FIRE PROTECTION WATER SERVICE TO ALLIANCE WATER COMPANY REQUIREMENTS.
- 6 TAP EXISTING WATERMAIN FOR 1" DOMESTIC WATER SERVICE TO ALLIANCE WATER COMPANY REQUIREMENTS.
- 7 FIRE DEPARTMENT CONNECTION, COORDINATE EXACT LOCATION WITH FIRE SERVICE DESIGN BUILD CONTRACTOR.
- 8 INTERCEPT EXISTING SANITARY SEWER LATERAL WITH NEW LATERAL CONNECTION PER ALLIANCE SEWER DEPARTMENT SPECIFICATIONS. INSTALL SANITARY CLEANOUT, SEE DETAIL.
- 9 LOADING DOCK CATCH BASIN, SEE ARCHITECTURAL PLANS.
- 10 UNDERGROUND CONDUIT, SEE ELECTRICAL PLANS.
- 11 CONNECT INTERNAL ROOF DRAIN LINES TO 12" HDPE STORM SEWER WITH 8" HDPE PIPE AT 1% MINIMUM SLOPE AND A WYE CONNECTION.
- 12 STORM SEWER DETENTION OUTLET STRUCTURE. SEE DETAIL. INTERCEPT EXISTING 12" STORM SEWER WITH OUTLET STRUCTURE, SEE STORM SEWER PROFILE.
- 13 RELOCATE FIRE HYDRANT OUT OF PROPOSED ENTRANCE. COORDINATE RELOCATION WITH ALLIANCE WATER COMPANY AND THE O'FALLON FIRE PROTECTION DISTRICT.
- 14 COORDINATE WITH PLUMBING PLANS FOR BUILDING CONNECTION.

NOTES

- SEE C000 FOR SYMBOLOLOGY LEGEND.
 - SEE ELECTRICAL PLAN FOR FEEDER LUMINAIRE, LIGHT POLE SCHEDULE, AND OTHER DETAILS.
 - SEE C401 FOR SEWER PROFILES.
 - ADJUST ALL EXISTING LIDS AND COVERS THAT REMAIN IN USE TO PROPOSED GRADE.
 - SEE MECHANICAL, ELECTRICAL, AND PLUMBING PLANS FOR ACCURATE BUILDING PENETRATIONS, CONNECTIONS, AND CONTINUANCE.
- BACKFLOW PREVENTERS WILL BE INSIDE THE BUILDING.

CONTACT INFORMATION

- THE CITY OF O'FALLON SHALL ALSO BE CONTACTED SEPARATELY FOR ALL UTILITY LOCATES UNDER ITS MAINTENANCE RESPONSIBILITY.
- | | |
|--|---|
| ELECTRIC
AMEREN UE
200 North Callahan Road
Wentzville, MO 63385 | WATER & SANITARY SEWER:
ALLIANCE
410 East Elm Street
O'Fallon, MO 63366 |
| Cuivre River Electric Coop
1112 East Cherry Street
PO Box 160
Troy, MO 63379 | GAS
LACLEDE GAS
3950 Forest Park Avenue
Saint Louis, MO 63108 |
| TELECOMMUNICATIONS:
GTE (VERIZON)
680 Parr Road
Building AA
Wentzville, MO 63385 | CABLE:
AT&T CABLE SERVICES
4160 Old Mill Parkway
Saint Peters, MO 63376 |
| SOUTHWESTERN BELL
402 North Thire Street
Saint Charles, MO 63301 | CHARTER COMMUNICATIONS
100 North Main Street
O'Fallon, MO 63366 |
| CHARTER COMMUNICATIONS
O'Fallon Fire Protection District
119 East Elm Street
O'Fallon, MO 63366 | FIRE DISTRICT:
O'Fallon Fire Protection District
119 East Elm Street
O'Fallon, MO 63366 |



PROJECT No.	DATE	DES.	DR.	CHKD.	REVISION
64702	APR 06	JPS	CAD	JPS	
	7/7/06				REVS PER CITY COMMENTS
	5/5/06				REVS PER CITY COMMENTS
	4/24/06				OWNER/AGENCY REVIEW

WOOLPERT, INC.
1910 Pine Street, Suite 420
Saint Louis, Missouri
63103-2254
314.241.3005
314.436.0884

WOOLPERT

ALDI - O'FALLON, MO
ALDI, INC.
8615 VETERANS MEMORIAL PARKWAY
O'FALLON, MISSOURI 63366

UTILITY PLAN