



**LANDSCAPE NOTES**

NO SUBSTITUTIONS OF PLANT MATERIAL WILL BE ALLOWED. IF PLANTS ARE SHOWN TO BE UNAVAILABLE, THE CONTRACTOR SHALL NOTIFY ENGINEER PRIOR TO BID DATE IN WRITING. ALL PLANTS SHALL BE INSPECTED AND TAGGED WITH PROJECT IDENTIFICATION AT NURSERY OR CONTRACTOR'S OPERATION PRIOR TO MOVING TO JOB SITE. PLANTS MAY ALSO BE INSPECTED AND APPROVED OR REJECTED ON THE JOB SITE.

ALL SHRUB AND GROUND COVER PLANTING AREAS SHALL BE COVERED WITH A FOUR INCH THICK LAYER OF SHREDDED HARDWOOD BARK MULCH (HW) UNLESS OTHERWISE NOTED. PRIOR TO MULCHING ALL BEDS SHALL BE COVERED WITH FIBER MAT WEED BARRIER. BARK MULCH SHALL BE APPROVED BY LANDSCAPE ARCHITECT AND SHALL BE UNIFORM IN TEXTURE AND COLOR AND SHALL BE OBTAINED FROM SAWMILL OR LUMBERING OPERATIONS. NO UTILITY MULCH OR PROCESSED TREE TRIMMINGS SHALL BE ALLOWED.

AN APPROVED PRE-EMERGENT HERBICIDE SHALL BE APPLIED IN ALL PLANTING AND GROUND COVER BEDS AT RATES SPECIFIED BY MANUFACTURER FOR EACH VARIETY OF PLANT.

ALL PLANTS SHALL MEET OR EXCEED AMERICAN STANDARDS FOR NURSERY STOCK, LATEST EDITION, AS SET FORTH BY AMERICAN ASSOCIATION OF NURSERYMEN.

PLANTS AND ALL OTHER MATERIALS TO BE STORED ON SITE SHALL BE PLACED WHERE THEY WILL NOT CONFLICT WITH CONSTRUCTION OPERATIONS AND AS DIRECTED BY THE ARCHITECT.

ALL LANDSCAPE PLANTINGS, INCLUDING TRANSPLANTS, SHALL BE GUARANTEED FOR A PERIOD OF ONE YEAR FOLLOWING FINAL INSPECTION BY LANDSCAPE ARCHITECT. AT THE END OF THIS PERIOD, PLANT MATERIAL TERMED DEAD OR UNSATISFACTORY BY LANDSCAPE ARCHITECT SHALL BE REPLACED AT NO ADDITIONAL CHARGE BY THE LANDSCAPE CONTRACTOR.

BACKFILL FOR TREE PLANTING SHALL BE 75% APPROVED TOPSOIL AND 25% APPROVED PEAT MOSS. TOP LAYER OF BACKFILL SHALL BE 100% EXISTING TOPSOIL. A 5-10-5 ANALYSIS SLOW RELEASE FERTILIZER SHALL BE INCORPORATED INTO BACKFILL AT APPROVED RATES.

FINAL PLACEMENT OF PLANT MATERIALS, ETC SHALL BE APPROVED BY LANDSCAPE ARCHITECT BEFORE PLANTING OPERATIONS ARE TO PROCEED. ALL TREE LOCATIONS SHALL BE MARKED WITH A WOODEN STAKE INDICATING VARIETY AND SIZE OF TREE. ALL GROUND COVER AND MULCH BED LINES SHALL BE MARKED BY A HIGHLY VISIBLE PAINT LINE WITH OCCASIONAL WOOD STAKES FOR REFERENCE. ALL STAKES SHALL BE REMOVED FOLLOWING PLANTING OPERATIONS. LANDSCAPE ARCHITECT RESERVES THE RIGHT TO ADJUST PLANT LOCATIONS ON SITE.

ALL AREAS DISTURBED BY CONSTRUCTION NOT COVERED WITH PAVEMENT OR BUILDING SHALL RECEIVE A MINIMUM OF 4" OF TOPSOIL.

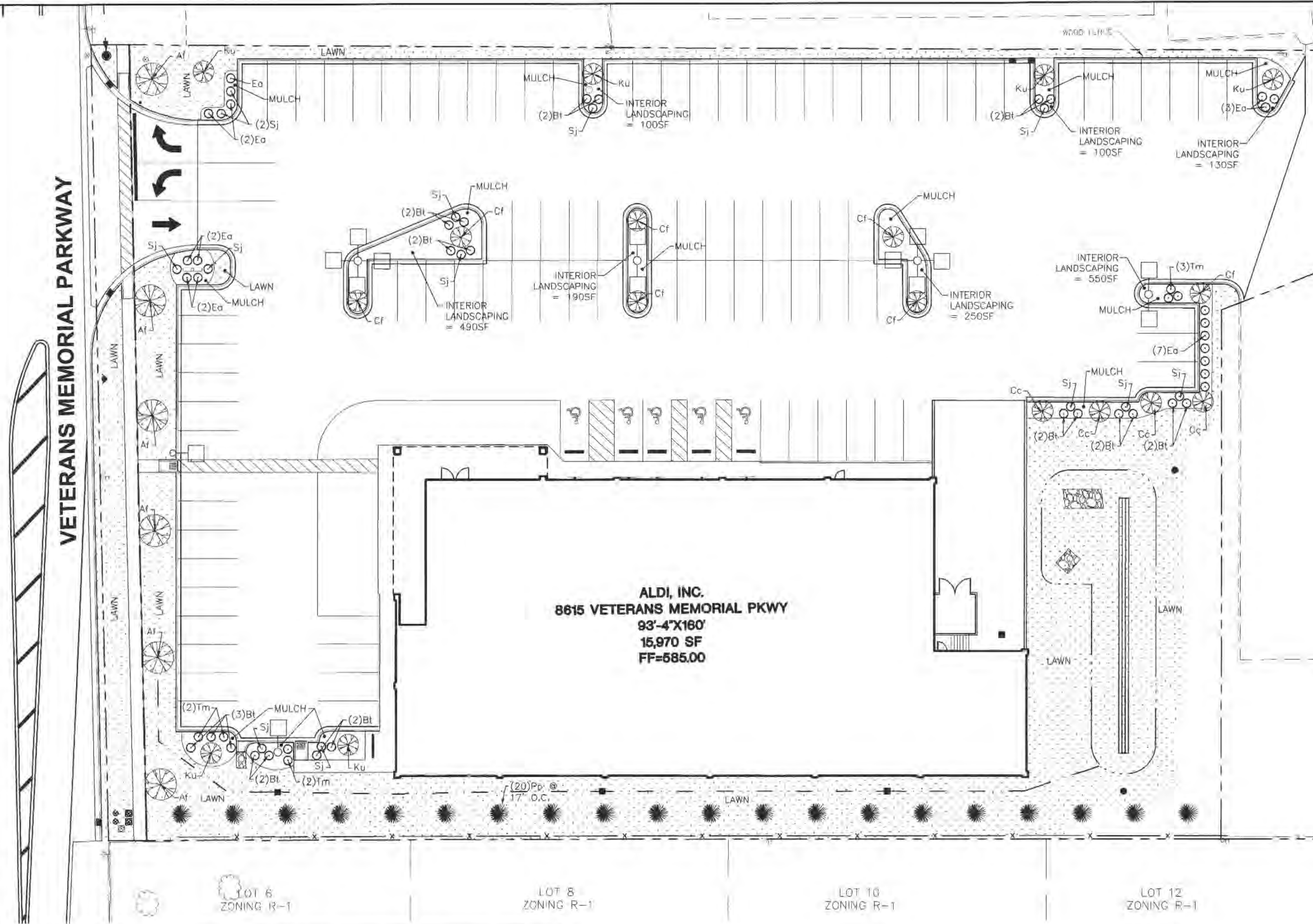
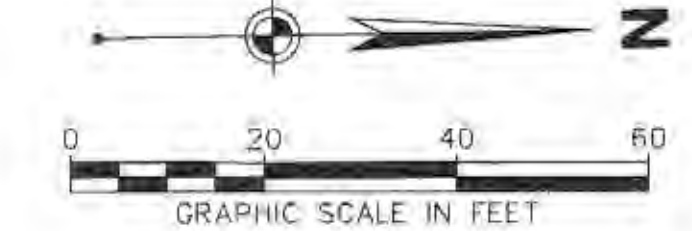
ALL AREAS DISTURBED BY CONSTRUCTION NOT COVERED WITH PAVEMENT, BUILDING OR SPECIFIC PLANTING SHALL BE SEEDED AND STRAW MULCHED. ALL SEEDING AND STRAW MULCH SHALL BE APPLIED WITH A HYDROSEEDER. SEE CONSTRUCTION LIMITS ON GRADING PLAN FOR SITE LIMITS OF SEEDING AND STRAWING.

WHERE TURF ABUTS PAVED SURFACES, FINISHED GRADE OF TURF SHALL BE HELD 1 INCH BELOW SURFACE ELEVATION OF TRAIL, SLAB, CURB, ETC.

ALL LAWNS SHALL BE GUARANTEED TO HAVE A FULL UNIFORM STAND OF ACCEPTABLE GRASS AT END OF ONE (1) YEAR GUARANTEE PERIOD WITH NO BARE SPOTS COMPRISING MORE THAN 2% OF ANY LAWN AREA. ANY AREA SO NOTED WILL BE SODDED UNTIL AN ACCEPTABLE STAND OF GRASS IS ESTABLISHED.

**LEGEND**

SYMBOL	DESCRIPTION
	CANOPY TREE
	EVERGREEN TREE
	ORNAMENTAL TREE
	SHRUBS



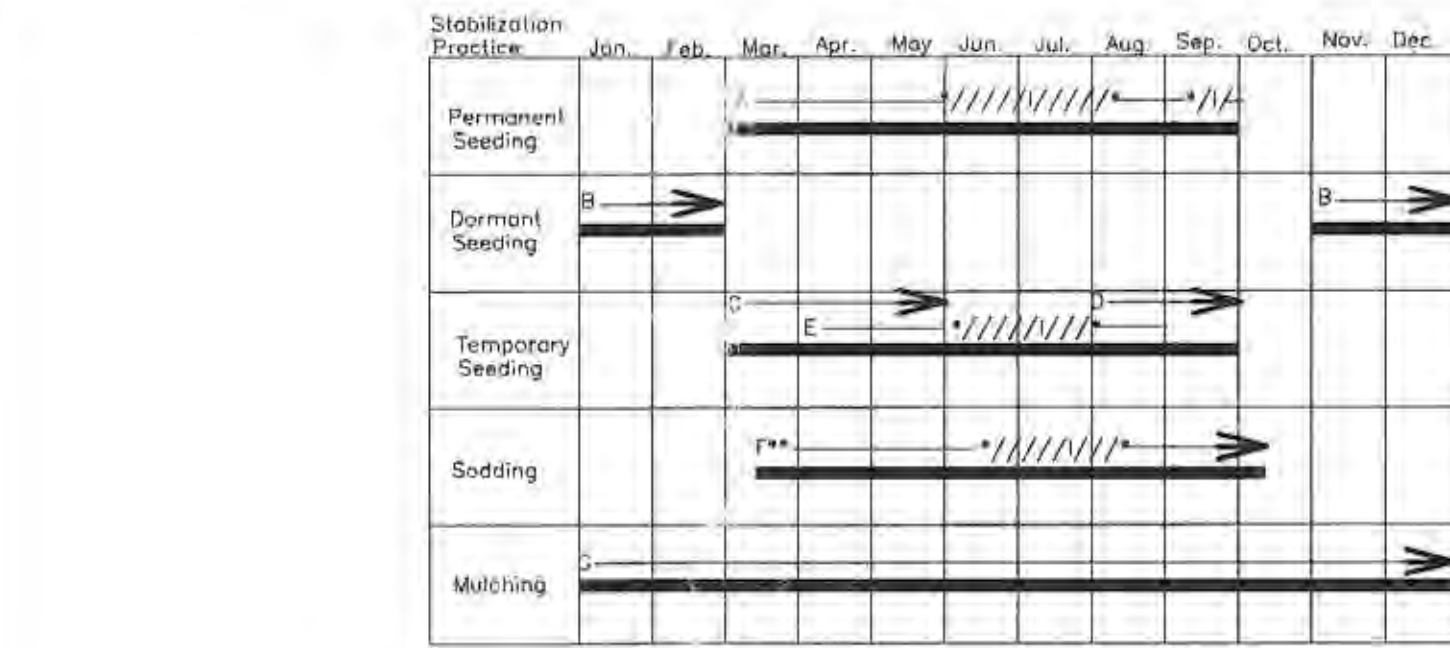
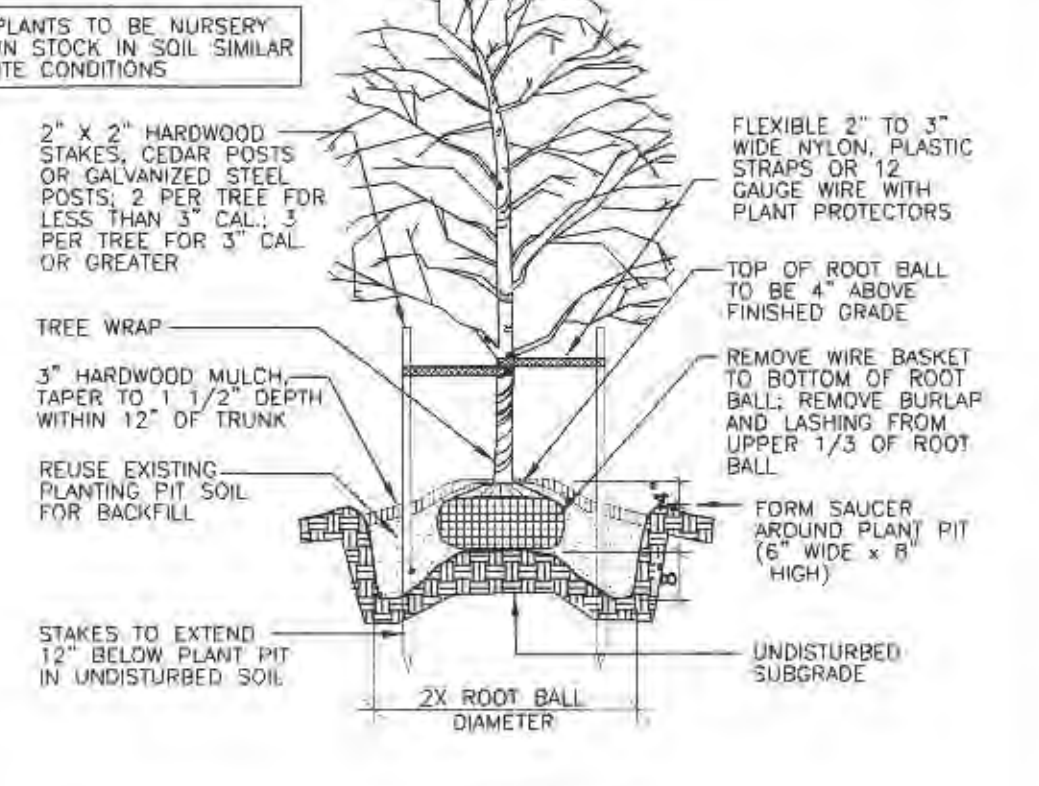
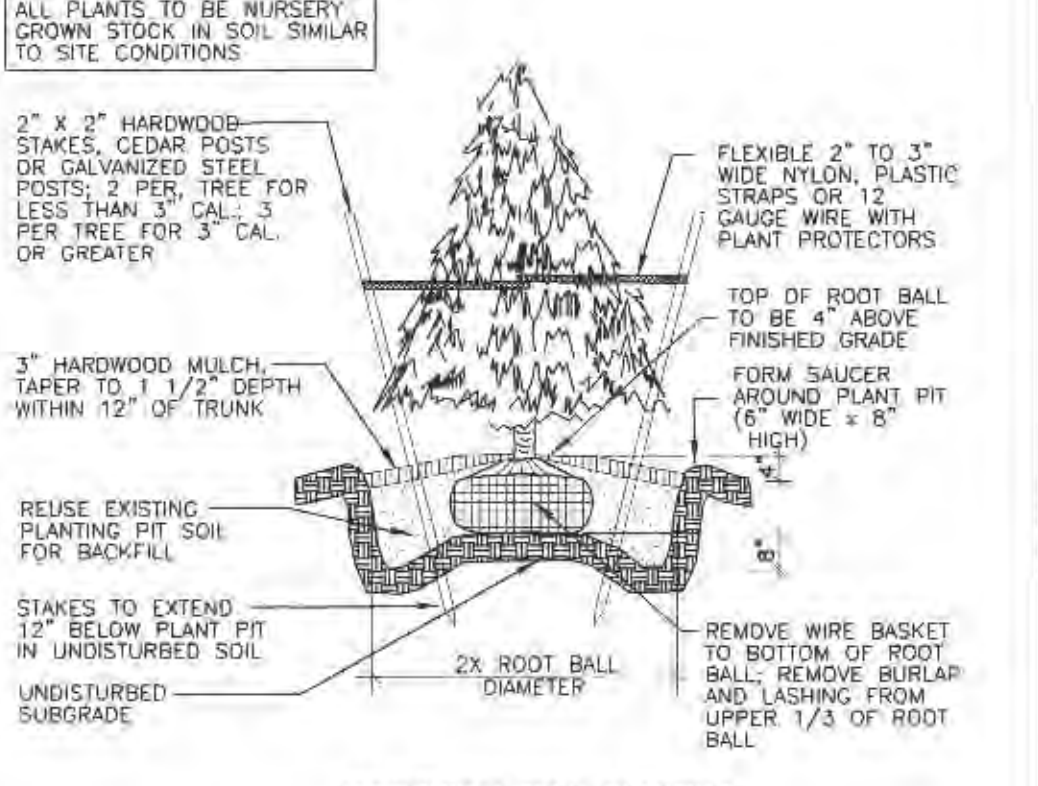
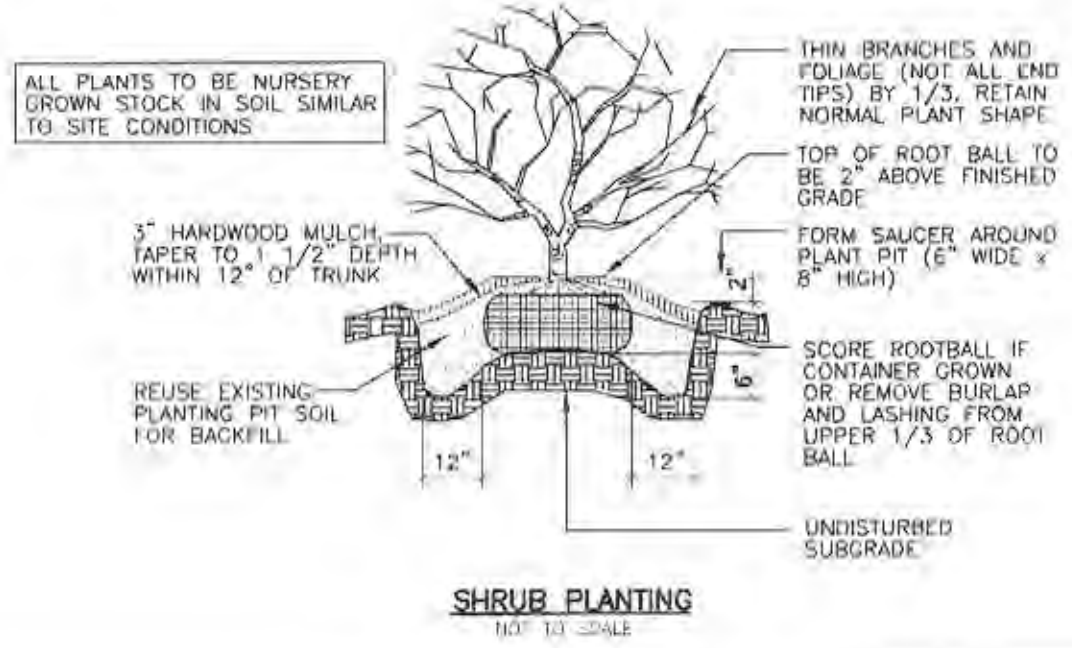
**ALDI, INC.**  
**8615 VETERANS MEMORIAL PKWY**  
**93'-4"X160'**  
**15,970 SF**  
**FF=585.00**

KEY	QUANTITY	SCIENTIFIC NAME	COMMON NAME	SIZE	CONDITION	REMARKS
<b>CANOPY TREES</b>						
Af		Acer Fernalii	Red Maple	2 1/2" Caliper	B&B	
<b>ORNAMENTAL TREES</b>						
Ku		Krauter vesuvius	Purple Leaf Plum	1 1/2" Caliper	B&B	
Cf		Cornus florida	White Flowering Dogwood	1 1/2" Caliper	B&B	
Cc		Cercis canadensis	Eastern Redbud	1 1/2" Caliper	B&B	
<b>EVERGREEN TREES</b>						
Pp		Pinaceae Picea pungens	Blue Spruce	6' Hgt	B&B	
<b>SHRUBS</b>						
Tm		Taxus x media 'Densiformis'	Dense Yew	36" Height	B&B	
Sj		Spiraea japonica	Little Princess Spirea	24" Height	No 3 Container	
Bt		Berberis thunbergii	Red Barberry	24" Height	No 3 Container	
Ea		euonymus alatus 'Compacta'	Compact Burning Bush	24" Height	No 3 Container	

NOTE: ALL AREAS DISTURBED BY CONSTRUCTION AND/OR LABELED AS LAWN SHALL BE SODDED PER SAINT CHARLES COUNTY SPECIFICATION SECTION 803.

**INTERIOR LANDSCAPE CALCULATION**

98 PARKING SPACES X 270 SF/PARKING SPACE X  
 6% INTERIOR LANDSCAPING REQUIRED =  
 1590 SF INTERIOR LANDSCAPING REQUIRED  
 1810 SF INTERIOR LANDSCAPING PROVIDED.



A = KENTUCKY BLUEGRASS 40 LBS./ACRE, OR 40 LBS. TALL FESCUE; PLUS 2 TONS STRAW MULCH/ACRE OR ADD ANNUAL RYEGRASS 20 LBS./ACRE.

B = KENTUCKY BLUEGRASS 60 LBS./ACRE, OR 40 LBS. TALL FESCUE; PLUS 2 TONS STRAW MULCH/ACRE OR ADD ANNUAL RYEGRASS 30 LBS./ACRE.

C = SPRING OATS 100 LBS./ACRE

D = WHEAT OR RYE 150 LBS./ACRE

E = ANNUAL RYEGRASS 40 LBS./ACRE. (1 LB./1000 SQ. FT.)

F = SOD

G = STRAW MULCH 2 TONS/ACRE.

\*/\* IRRIGATION NEEDED DURING JUNE, JULY, AND/OR SEPTEMBER.

\*\* IRRIGATION NEEDED FOR 2 TO 3 WEEKS AFTER APPLYING SOD.

LIME AND FERTILIZE TO SITE SPECIFIC SOILS TESTS OR APPLY FERTILIZER AT A RATE OF 1000 LBS. PER ACRE OR 12-12-12 OR EQUIVALENT.

ALL SWALES SHALL BE SEEDED WITH 2 LBS. ADELPHI BLUEGRASS AND 2 LBS. PERENNIAL DERBY RYE, OR EQUIVALENT PER 1000 SQUARE FEET. MULCH WITH ONE BALE OF STRAW PER 1000 SQUARE FEET. FERTILIZE WITH 5 LBS. OF 20-5-5 PER 1000 SQUARE FEET.

**MAINTENANCE**

INSPECT PERIODICALLY, ESPECIALLY AFTER STORM EVENTS, UNTIL THE STAND IS SUCCESSFULLY ESTABLISHED. (CHARACTERISTICS OF A SUCCESSFUL STAND INCLUDE: VIGOROUS DARK GREEN OR BLuish-GREEN SEEDLINGS; UNIFORM DENSITY WITH NURSE PLANTS, LEGUMES, AND GRASSES WELL INTER-MIXED; GREEN LEAVES; AND THE PERENNIALS REMAINING GREEN THROUGHOUT THE SUMMER, AT LEAST AT THE PLANT BASE.)

PLAN TO ADD FERTILIZER THE FOLLOWING GROWING SEASON ACCORDING TO SOIL TEST RECOMMENDATIONS.

REPAIR DAMAGED, BARE, OR SPARSE AREAS BY FILLING ANY GULLIES, RE-FERTILIZING, OVER- OR RE-SEEDING, AND MULCHING.

IF PLANT COVER IS SPARSE OR PATCHY, REVIEW THE PLANT MATERIALS CHOSEN, SOIL FERTILITY, MOISTURE CONDITION, AND MULCHING; THEN REPAIR THE AFFECTED AREA EITHER BY OVER-SEEDING OR BY RE-SEEDING AND MULCHING AFTER RE-PREPARING THE SEEDBED.

IF VEGETATION FAILS TO GROW, CONSIDER SOIL TESTING TO DETERMINE ACIDITY OR NUTRIENT DEFICIENCY PROBLEMS. (CONTACT YOUR SWCD OR COOPERATIVE EXTENSION OFFICE FOR ASSISTANCE.)

IF ADDITIONAL FERTILIZATION IS NEEDED TO GET A SATISFACTORY STAND, DO SO ACCORDING TO THE SOIL TEST RECOMMENDATIONS.

**SEEDING CHART**

NOT TO SCALE

No.	DATE	REVISION
PROJECT No:	64702	
DATE	APR 06	
DES.	JFS	
DR.	CAD	
CKD.	JFS	
	6/5/06	REVS PER CITY COMMENTS
	4/24/06	OWNER/AGENCY REVIEW

WOOLPERT, INC.  
 1910 Pine Street, Suite 420  
 Saint Louis, Missouri  
 63103-2254  
 314.241.3005  
 FAX: 314.436.0894

**ALDI - O'FALLON, MO**  
**ALDI, INC.**  
 8615 VETERANS MEMORIAL PARKWAY  
 O'FALLON, MISSOURI 63366

**LANDSCAPING PLAN**