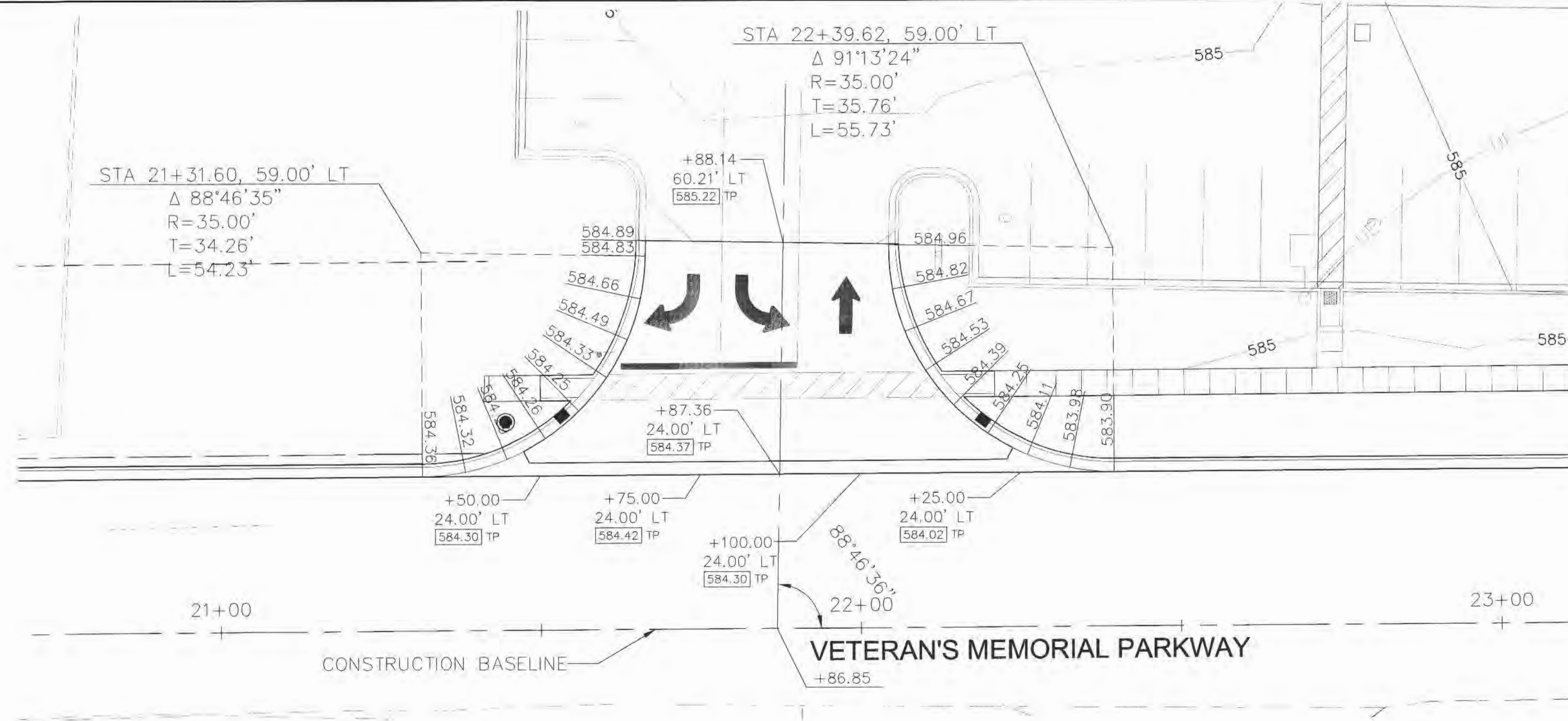
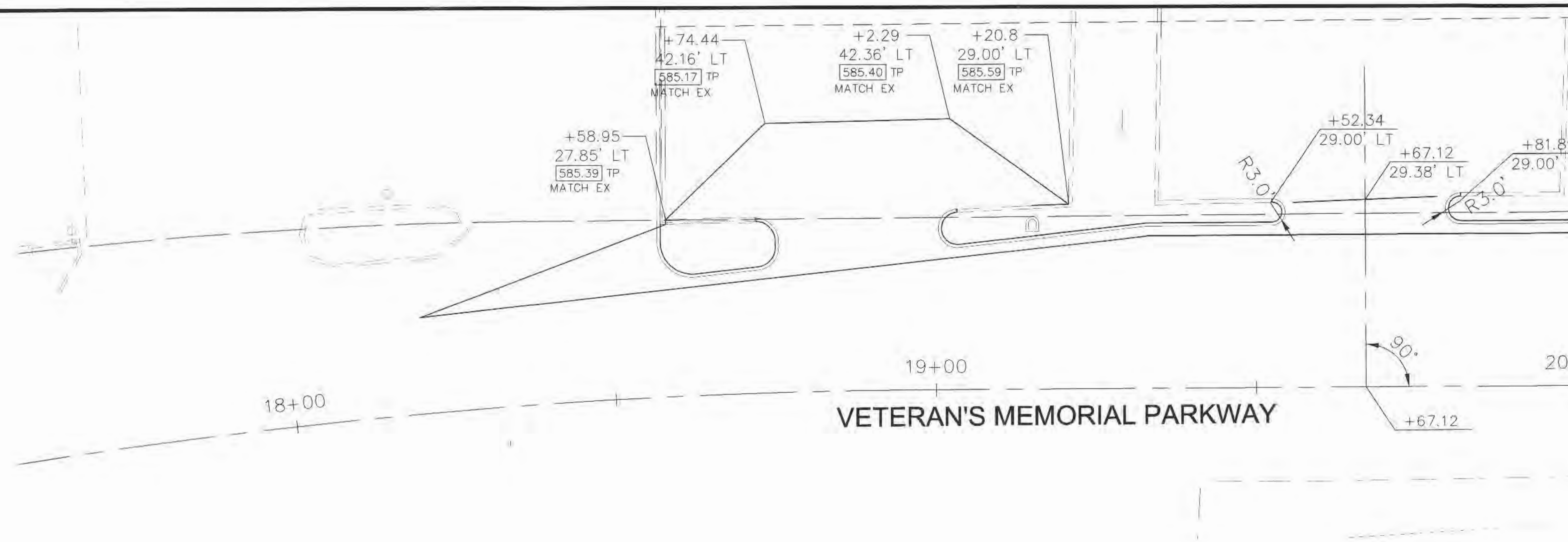


G:\SD\Projects\ALDI\ALDI - CIVIL\O'Fallon, Mo\Design\64702\dwg\64-702-rd-inl.dwg, Plotted By: bruced, Plotted: Jul 07, 2006 - 3:18pm



ALDI'S ENTRANCE
STA: 21+87.36



COMMERCIAL ENTRANCE
STA: 18+98.12

NOTES

ALL DIMENSIONS, RADII, AND CURVE DATA ARE TO THE EDGE OF PAVEMENT.

LEGEND

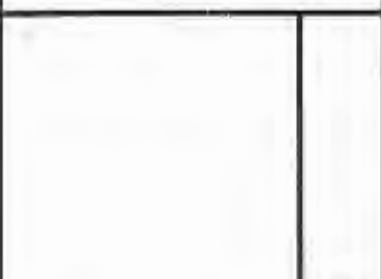
TOP OF CURB ELEVATION
 PAVEMENT SPOT ELEVATIONS



No.	DATE	REVISION

PROJECT No:	64702
DATE	APR 06
DES.	DWB
DR.	CAD
CKD.	JPS

WOOLPERT, INC.
 1910 Pine Street, Suite 420
 Saint Louis, Missouri
 63103-2254
 314.241.3005
 FAX: 314.436.0884



ALDI - O'FALLON, MO
ALDI, INC.
 8615 VETERANS MEMORIAL PARKWAY
 O'FALLON, MISSOURI 63366

INTERSECTION DETAILS

SHEET NO.
R904