

ROOM FINISH SCHEDULE

ROOM NO.	ROOM NAME	FLR. MATL.	BASE MATL.	EAST WALL		NORTH WALL		WEST WALL		SOUTH WALL		CEILING		REMARKS
				MATL.	FIN.	MATL.	FIN.	MATL.	FIN.	MATL.	FIN.	MATL.	FIN.	
101	ENTRY	DT	V	GL	---	GL/PB/DN	-/-PT	GL/PB/DN	-/-PT	GL	---	ACT	---	LPB TO 45'-0" - 3/4" MDF SUBSTRATE
102	EXIT	DT	V	GL	---	GL	---	GL/PB/DN	-/-PT	GL/PB/DN	-/-PT	ACT	---	LPB TO 45'-0" - 3/4" MDF SUBSTRATE
103	SALES	DT	V/SB	FR/PB/DN	-/-PT	GL/PB/DN	-/-PT	GL/PB/DN	-/-PT	GL/PB/DN	-/-PT	ACT	---	LPB TO 45'-0" OR 45'-8 1/2", SEE INTERIOR ELEVATIONS
104	WOMEN	CT	V	DN	CT	DN	CT	DN	CT	DN	CT	ACT	---	INSULATE WALLS TO 4'-0"
105	HALL	DT	V	LPB/DN	-/-PT	LPB/DN	-/-PT	LPB/DN	-/-PT	LPB/DN	-/-PT	ACT	---	LPB TO 45'-0"
106	MEN	CT	V	DN	CT	DN	CT	DN	CT	DN	CT	ACT	---	INSULATE WALLS TO 4'-0"
107	BREAKROOM	CT	V	DN	VNC	DN	CT/VNC	DN	VNC	DN/VNC	-VNC	ACT	---	INSULATE WALLS TO 4'-0"
108	OFFICE	CT	V	DN	PT	DN	PT	DN/VNC	DN	PT	ACT	---	---	INSULATE WALLS TO 4'-0"
109	UTILITY	CONC.	P.B./V	PW/DN	PT/PT	PW/DN	PT/PT	PW/DN	PT/PT	PW/DN	PT/PT	ACT	---	INSULATE WALLS TO 4'-0", FM TO 45'-0"
110	BACKROOM	CONC.	P.B.	PW/DN	PT/PT	PW/DN	PT/PT	GL/PW/DN	-PT/PT	FR/PW/DN	-PT/PT	STR	---	FM TO 45'-0"

ACT - ACOUSTIC TILE
 CLR - COOLER
 CONC - CONCRETE
 CT - CERAMIC TILE
 DN - DRYWALL
 FR - FREEZER
 GL - GLASS
 LPB - LAMINATED PARTICLE BOARD
 P.B. - PALLET BUMPER
 PT - PAINT
 PW - PLYWOOD
 QT - QUARRY TILE
 SS - STAINLESS STEEL
 STR - STRUCTURE
 V - VINYL BASE
 VNC - VINYL WALLCOVERING

NOTE: 5/8" GYPSUM DETAIL AT INTERIOR FACE OF ALL EXTERIOR WALLS, AND AT INTERIOR WALLS OF SALES 103, BREAKROOM 107, OFFICE 108 AND UTILITY ROOM 109.
 1/2" GYPSUM DETAIL AT ALL OTHER INTERIOR WALLS.
 SEE EXTERIOR ELEVATIONS, SHEET A-3, FOR WALL CONTROL JOINT LOCATIONS.

KEYED NOTES:

NUMBERS 00 THRU 29 ARE CONTRACTOR SUPPLIED AND INSTALLED

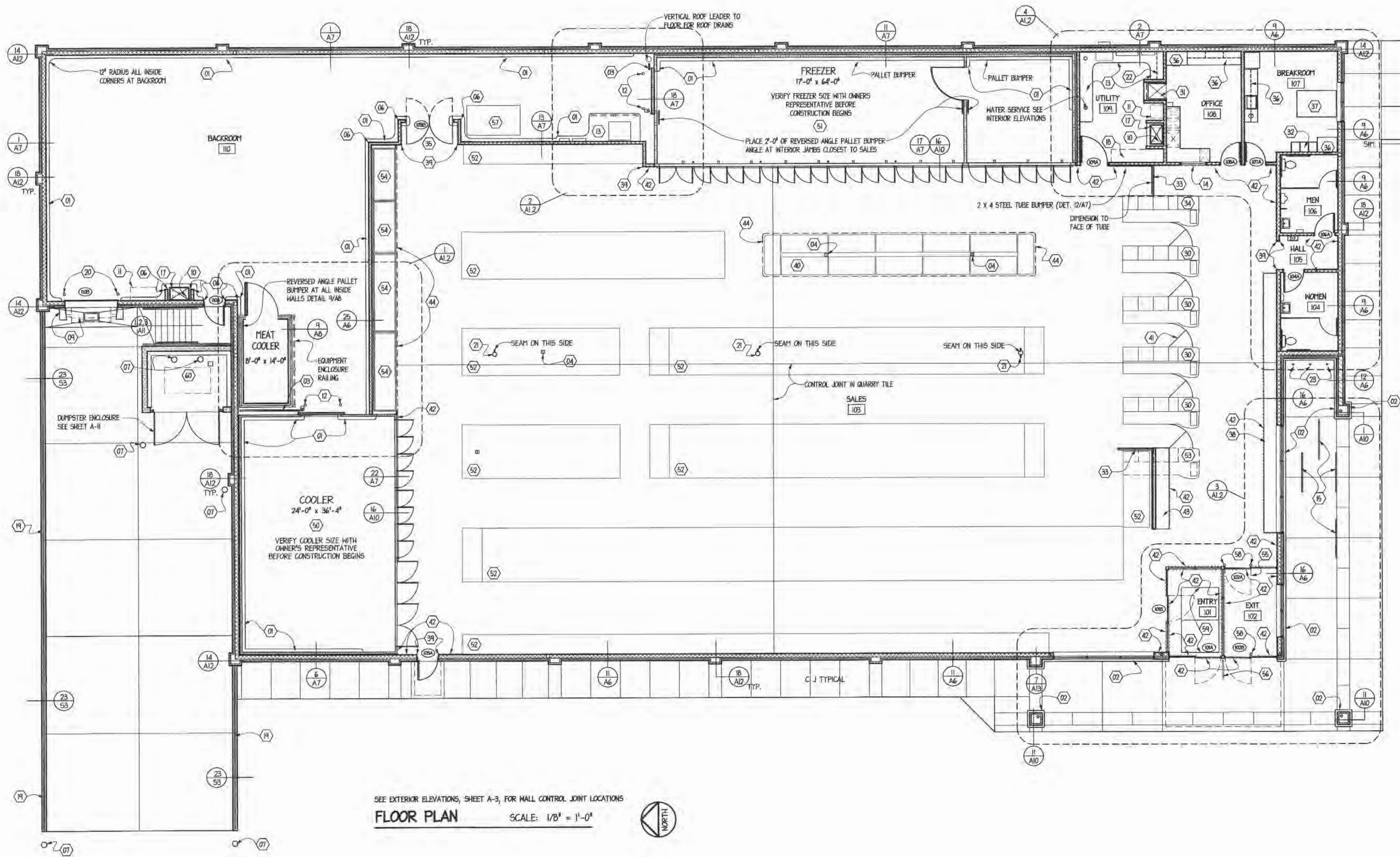
- 00 NOT USED
- 01 PALLET BUMPER (DET. 18/11/14)
- 02 CART BUMPER - SEE STRUCTURAL
- 03 TUBE STEEL BUMPER
- 04 POWER POLE FOR SPOT MERCHANDISER AND SPECIAL PRODUCE
- 05 NOT USED
- 06 STEEL CORNER GUARD (DET. 5/18)
- 07 10" PIPE BOLLARD (DET. 2/11/10)
- 08 NOT USED
- 09 DOCK LEVELER AND SEAL
- 10 WATER HEATER SHELF (DET. 2/11/1)
- 11 BATTERY CHARGER SHELF (DET. 2/11/1)
- 12 4" PIPE BOLLARD VERIFY BOLLARD LOCATION - MAINTAIN CLEARANCE (DET. 2/11/10)
- 13 6" EQUIPMENT PAD, 1'-3" X 7'-0" @ FREEZER, 2'-0" X 10'-0" @ WATER SERVICE, 1'-0" X 10'-0" AT ELECTRICAL SERVICE. VERIFY COMPRESSOR ELECTRICAL ACCESS REQUIREMENTS WITH ELECTRICAL CONTRACTOR PRIOR TO POURING PAD.
- 14 HOLLOW METAL FRAMED "ONE-WAY" TEMPERED WINDOW
- 15 CART RAILING 6'-0" X 2'-11" - (ABOVE GRADE)
- 16 NOT USED
- 17 POP BASIN
- 18 2'-0" X 18'-0" LIGHT BULB SHELF (DET. 35/11/1)
- 19 PIPE RAILINGS (DET. 15/11/1)
- 20 1" PIPE BOLLARD (DET. 2/11/1)
- 21 STAINLESS STEEL COLUMN COVERS (3) (DET. 10/11/1)
- 22 1'-0" X 4'-3" SHELF
- 23 3" GALVANIZED STEEL POSTS - CENTERED BETWEEN ROOMS, CONCRETE FILLED, WITH STARTER CHAINS

NUMBERS 30 THRU 49 ARE OWNER SUPPLIED AND CONTRACTOR INSTALLED

- 30 CHECKOUT COUNTERS - PARTIALLY PREASSEMBLED
- 31 SAFE / SAFE CABINET (DET. 13/11/1)
- 32 LOCKERS - PREASSEMBLED
- 33 SECURITY RAILING & STEEL TUBE BUMPER (DET. 43/11/1) (STEEL TUBE BUMPER PROVIDED BY CONTRACTOR)
- 34 CHECKOUT COUNTER WITH DUMP BIN - PARTIALLY PREASSEMBLED
- 35 VINYL DOORS AND HARDWARE
- 36 COAT CLOSET / CABINETS - CASEWORK
- 37 TABLE AND CHAIRS
- 38 SACKING COUNTER (DET. 4/11/1)
- 39 ALUMINUM CORNER GUARD (DET. 23/11/1)
- 40 SPOT MERCHANDISER OR SPECIAL PRODUCE
- 41 SECURITY GATES
- 42 BUMPER GUARD - AT WALLS, SACKING COUNTER AND GLAZING FRAMING OF ENTRY 101, EXIT 102, & SALES 103 AS INDICATED. (SMALL NOT INTERFERE WITH DOOR OPERATION) (DETAIL 6,7,8,11/11/1)
- 43 SACKING COUNTER (DET. 15/11/1)
- 44 MEDE BUMPER GUARD - VERIFY WITH ALDI REPRESENTATIVE BEFORE PLACEMENT

NUMBERS 50 THRU 59 ARE OWNER SUPPLIED AND INSTALLED

- 50 WALK-IN COOLER
- 51 WALK-IN FREEZER
- 52 MERCHANDISING FIXTURES - CONTRACTOR TO ASSIST IN INSTALLATION
- 53 FUTURE CHECKOUT
- 54 HUSGEMANN REACH-IN COOLERS, VERIFY 8'-0"/10'-0" SEQUENCE WITH ALDI
- 55 AUTOMATIC SLIDING ENTRY DOORS WITH HINGED BREAKAWAY EMERGENCY EXIT
- 56 SAFETY RAILING - VERIFY SIZE AND LOCATION WITH OWNER
- 57 CARDBOARD BALER
- 58 BUMPER POST - VERIFY SIZE AND LOCATION WITH OWNER
- 59 ENTRY MAT - CONTRACTOR TO IDENTIFY LOCATION
- 60 TRASH DUMPSTER - VERIFY WITH OWNER



SEE EXTERIOR ELEVATIONS, SHEET A-3, FOR WALL CONTROL JOINT LOCATIONS
FLOOR PLAN SCALE: 1/8" = 1'-0"



OPN ARCHITECTS, INC.
 200 FIFTH AVENUE SE, SUITE 201
 CEDAR RAPIDS, IOWA 52401
 PHONE (319) 363 6000
 FAX (319) 363 7594
 © OPN ARCHITECTS, INC. 2005



JULY 31, 2006
 REVISIONS:

STRUCTURAL, MECHANICAL, AND ELECTRICAL ENGINEER:
KJW
 KJW ENGINEERING CONSULTANTS
 628 FIFTH AVENUE, SUITE 1000
 CEDAR RAPIDS, IOWA 52401
 (319) 363-6000 FAX (319) 363-7594

ALDI, INC. - 8615 VETERANS MEMORIAL PARKWAY - OF FALLON, MISSOURI
SCHEDULES & NOTES



JOB NO. 05621
A-1.1
 MAY 2006