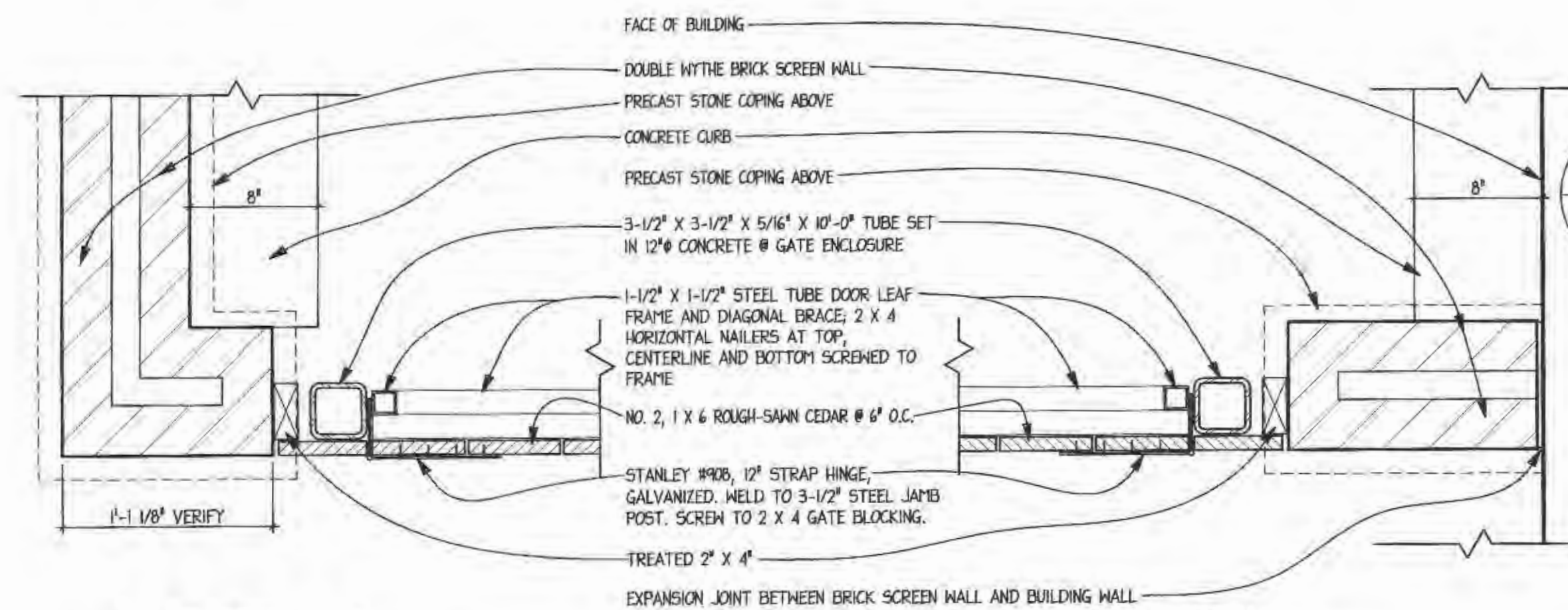


7 CORNER @ DUMPSTER ENCLOSURE  
1-1/2'-11'-0"

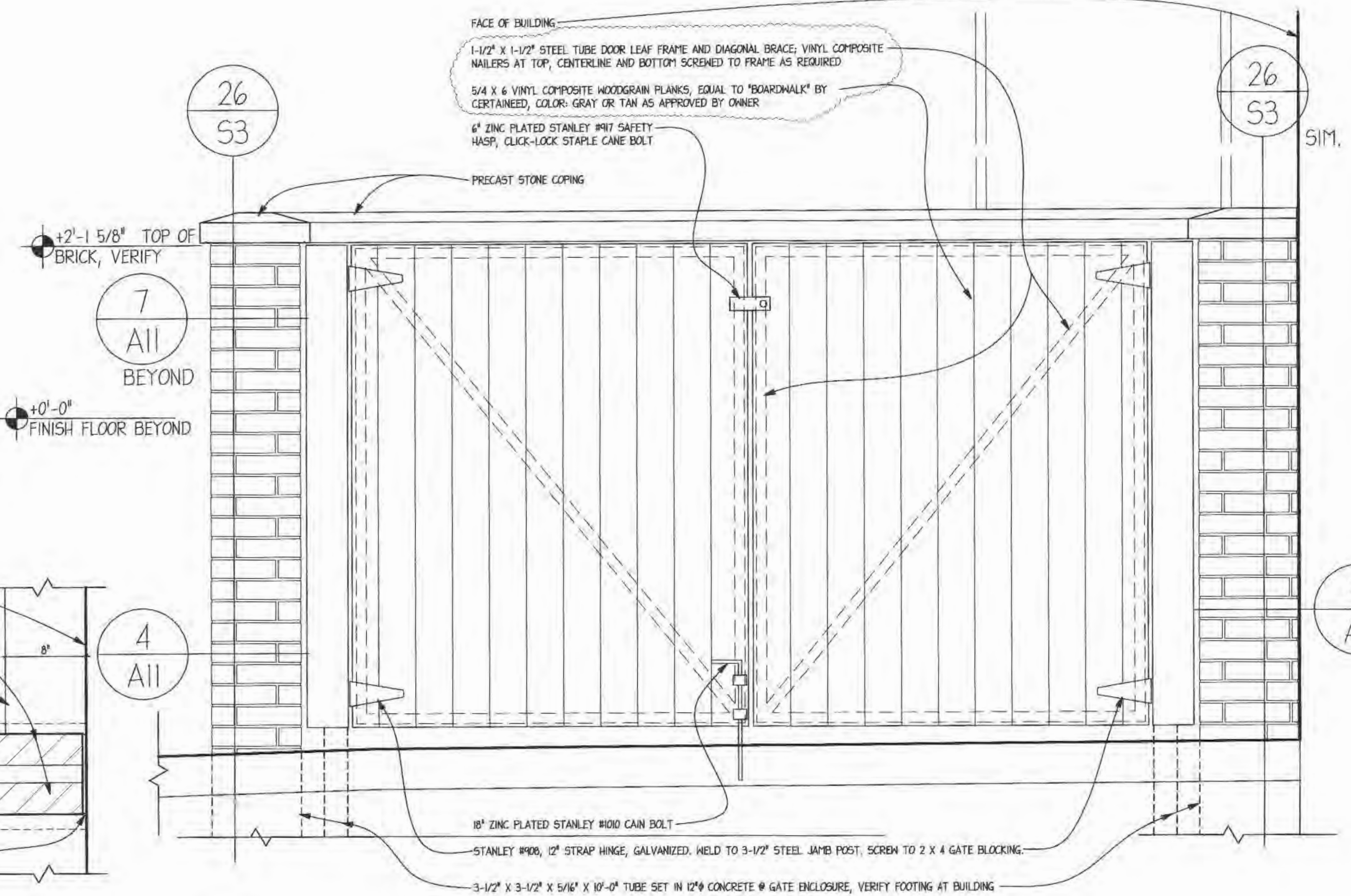
8 NOT USED



4 JAMB @ DUMPSTER ENCLOSURE  
1-1/2'-11'-0"

5 JAMB @ DUMPSTER ENCLOSURE  
1-1/2'-11'-0"

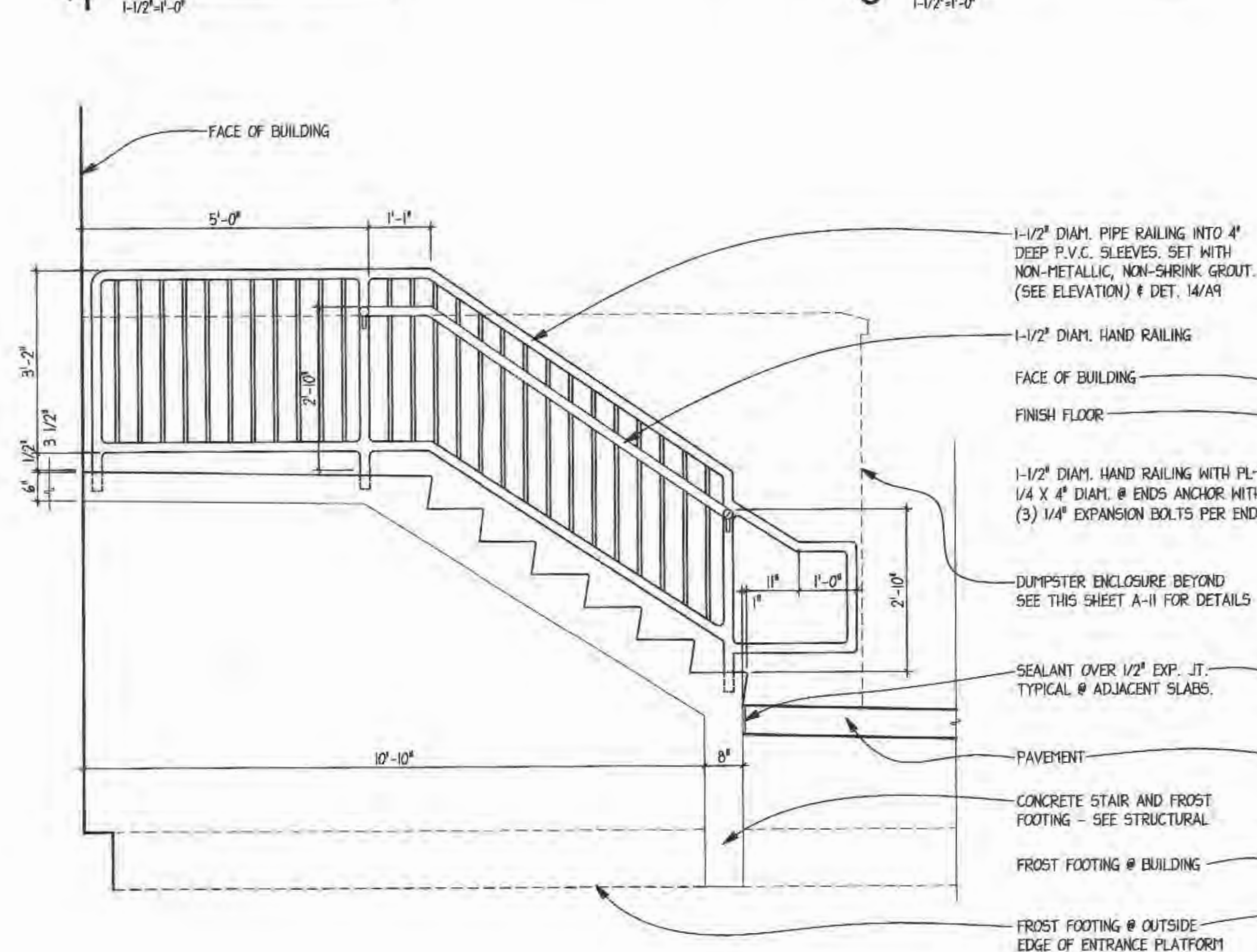
6 GATES @ DUMPSTER ENCLOSURE  
1'-1'-0"



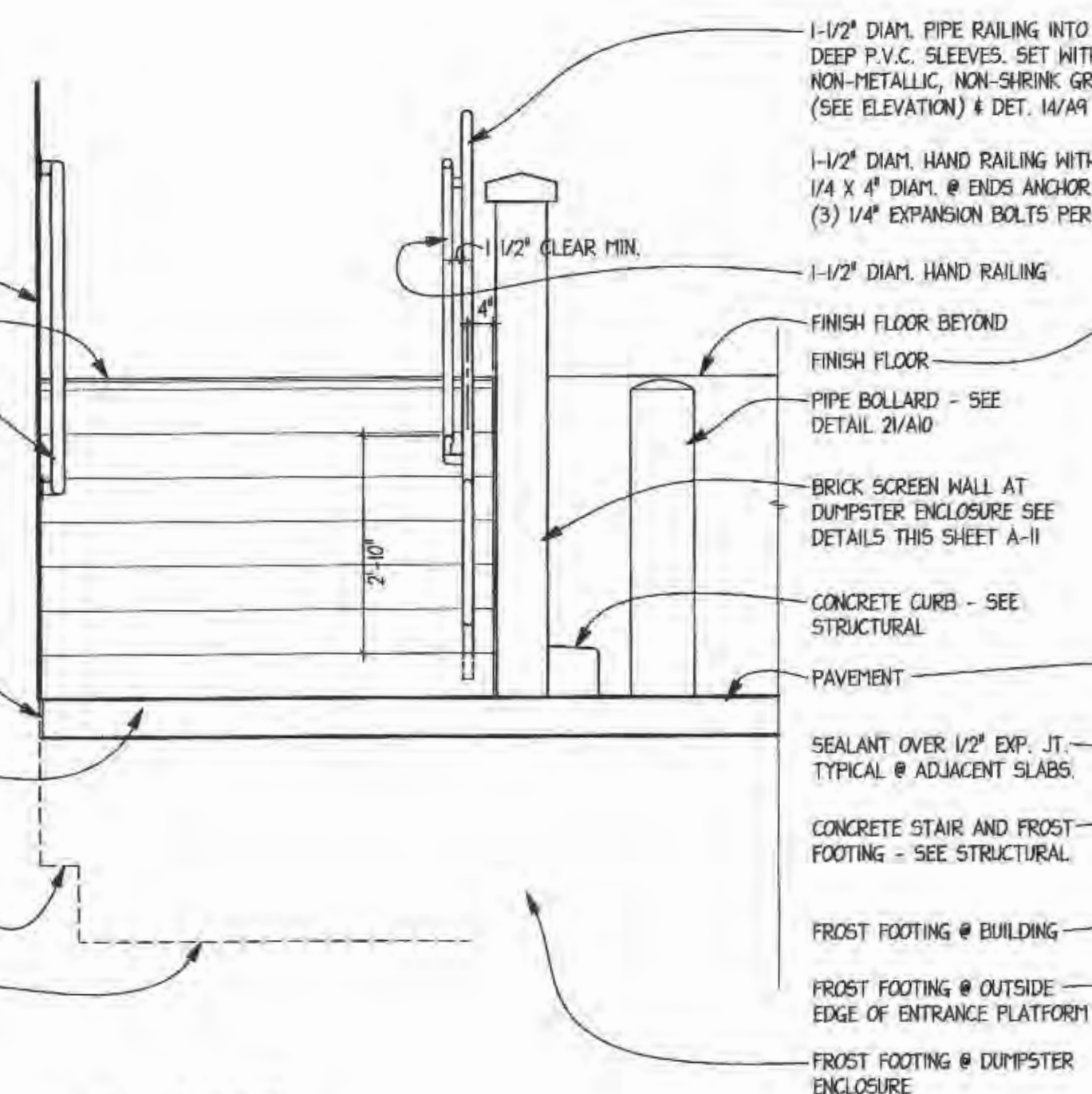
+2'-1 5/8" TOP OF BRICK, VERIFY  
7 All BEYOND  
+0'-0" FINISH FLOOR BEYOND

4 All

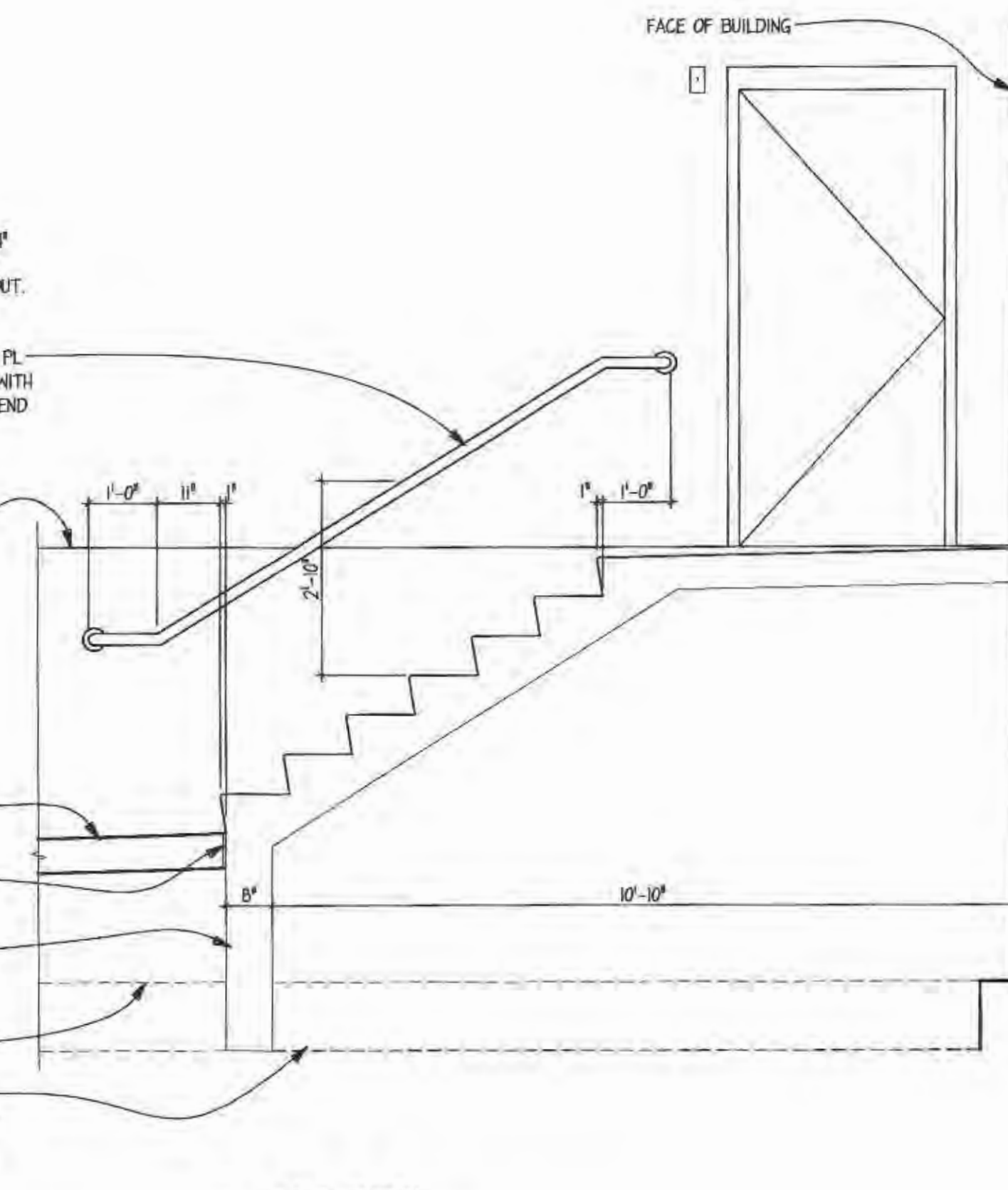
5 All



1 STAIR SECTION  
1/2'-11'-0"



2 STAIR ELEVATION  
1/2'-11'-0"



3 STAIR SECTION  
1/2'-11'-0"

**OPN ARCHITECTS, INC.**  
200 FIFTH AVENUE SE, SUITE 201  
CEDAR RAPIDS, IOWA 52401  
PHONE: (319) 363 6085  
FAX: (319) 363 7349  
© OPN Architects, Inc. 2005

STATE OF MISSOURI  
BRAD A. WOODS  
NUMBER A-8242  
REGISTERED ARCHITECT

JULY 28, 2006  
REVISIONS:

STRUCTURAL, MECHANICAL, AND ELECTRICAL ENGINEER:  
**KJW**  
KJW ENGINEERING CONSULTANTS  
422 25TH AVENUE  
PO BOX 11402  
ST. LOUIS, MO 63142  
(314) 784-4444 FAX: (314) 784-4444

**ALDI, INC. - 8615 VETERANS MEMORIAL PARKWAY - O'FALLON, MISSOURI**  
**STAIR DETAILS**

**ALDI**

JOB NO. 05621  
**A-11**  
MAY 2006