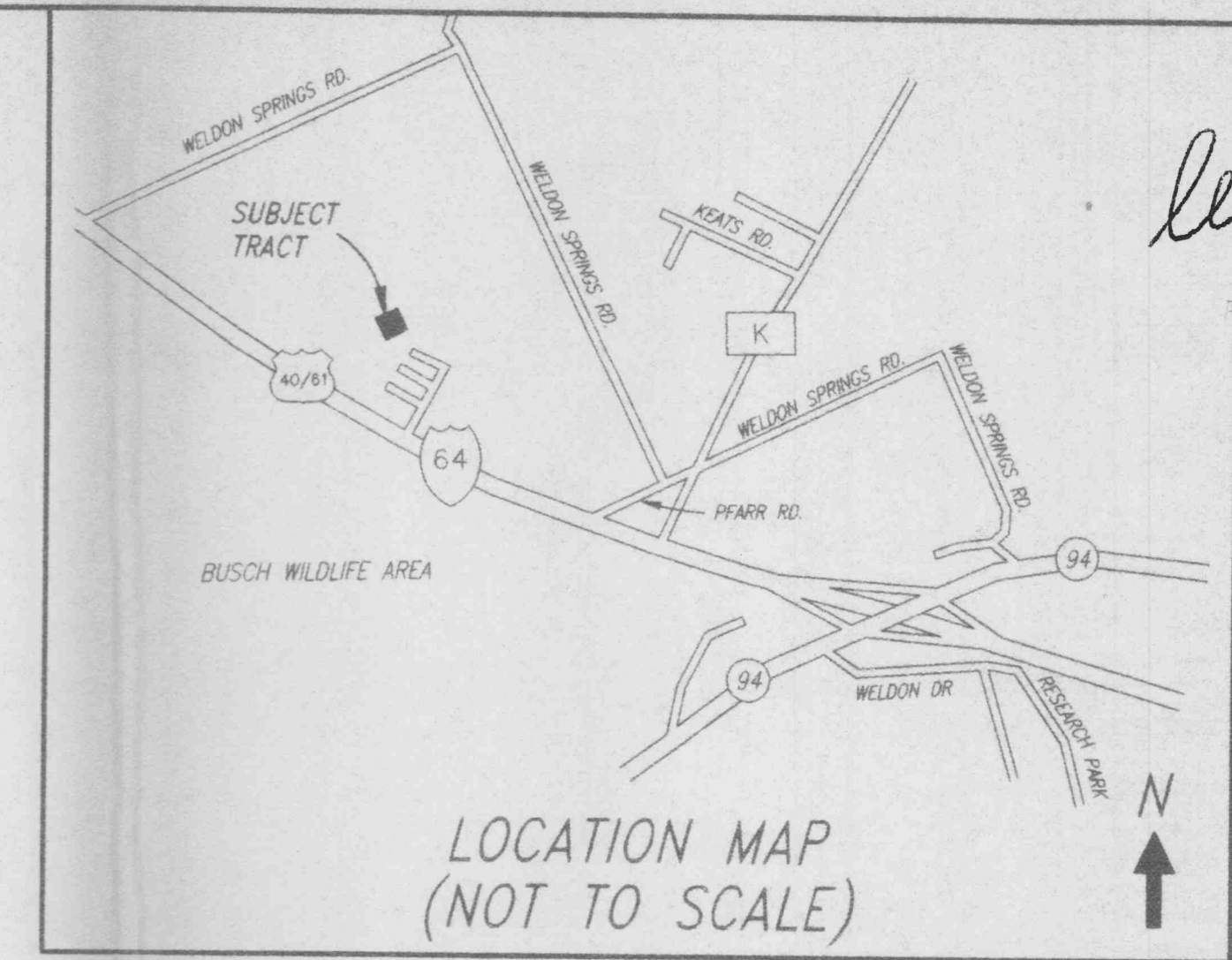


A TRACT OF LAND IN U.S. SURVEY 1669
TOWNSHIP 46 NORTH, RANGE 3 EAST
ST. CHARLES COUNTY, MISSOURI



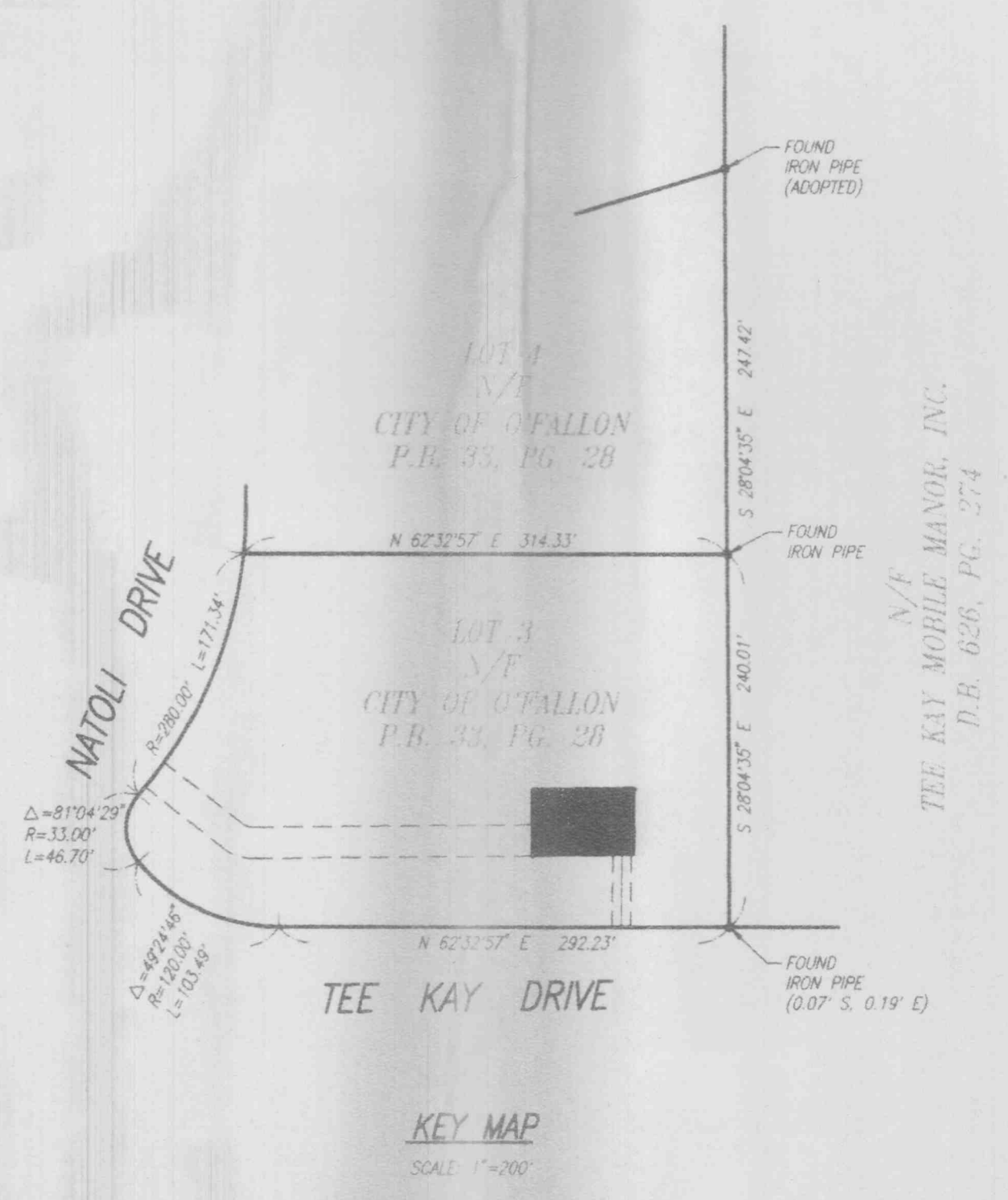
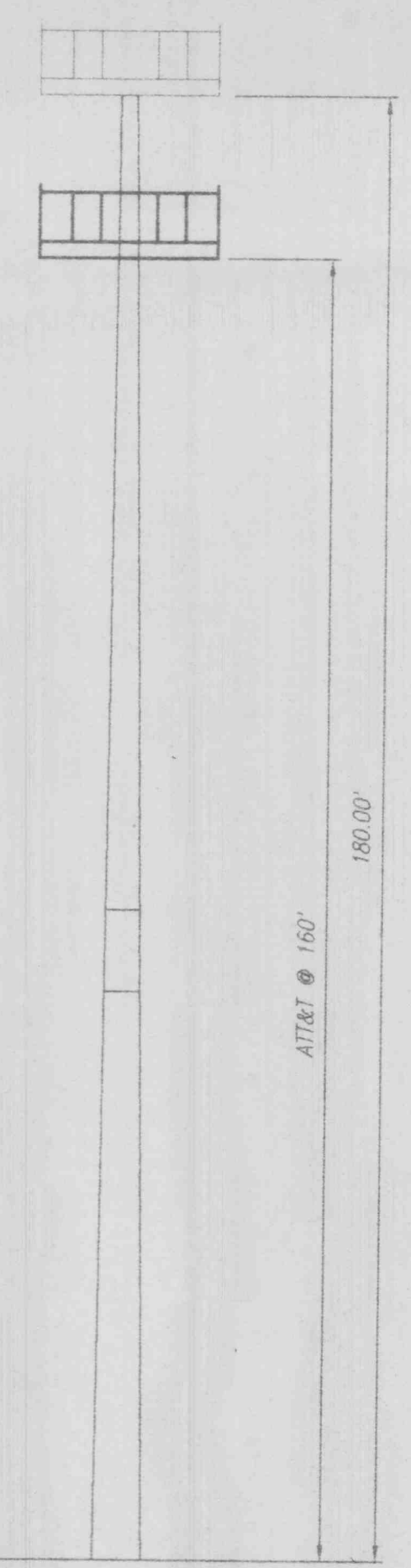
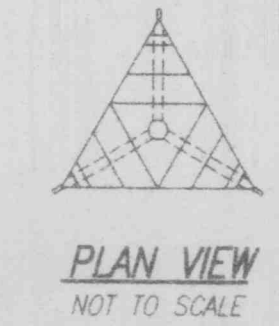
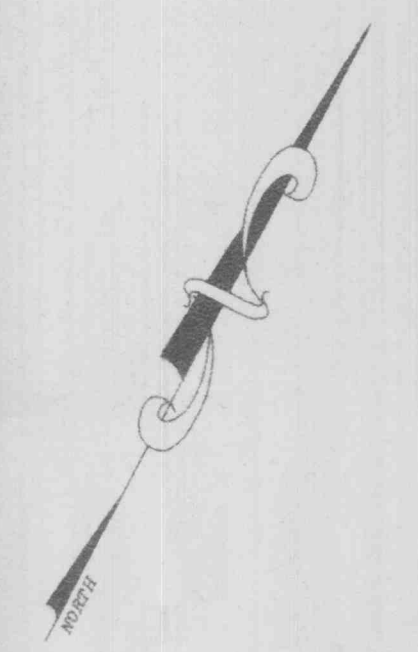
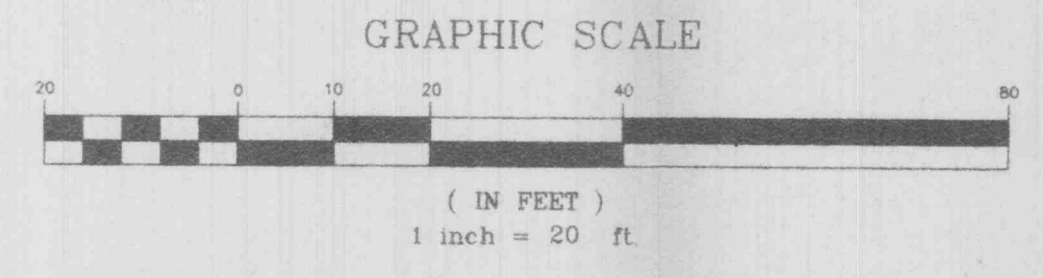
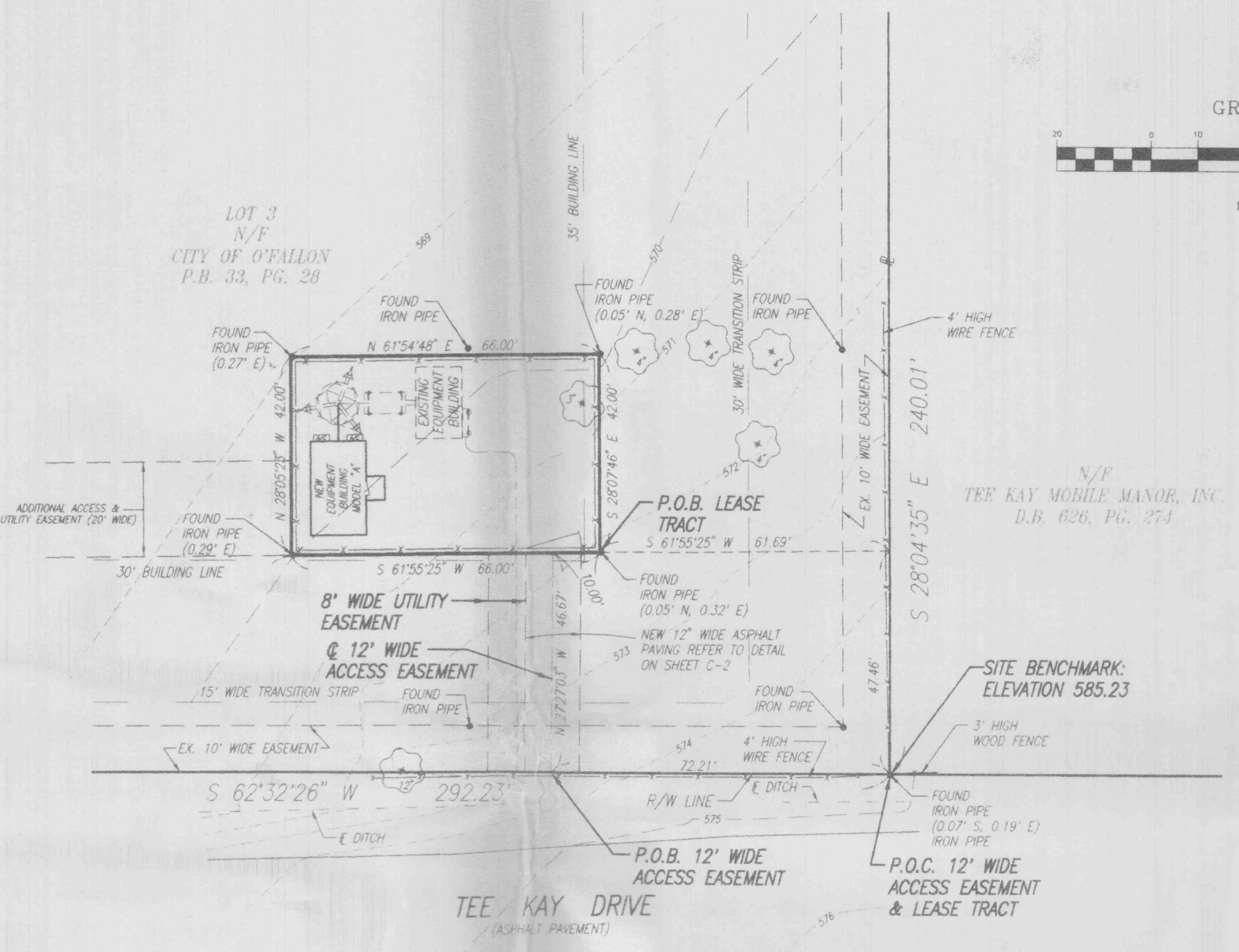
Robert E. Polk, Jr.
E-20082
Professional Engineer

NO	DATE	DESCRIPTIONS

AT&T WIRELESS PCS, INC.
LOT 3 OF O'FALLON CORPORATE CENTRE,
O'FALLON, MISSOURI 63304
SITE 716-D

Farnsworth Polk, Inc.
engineers & surveyors
144 W. Lockwood Ave.
St. Louis, MO 63119
Phone (314)962-7900
Fax (314)962-1253

TITLE:
OVERALL SITE PLAN
DATE: JANUARY 13, 1997
PROJECT NO.: 96515.1
SHEET:
C-1



ABBREVIATIONS & SYMBOLS

R/W	RIGHT OF WAY	N	DENOTES NORTH
P	PROPERTY LINE	S	DENOTES SOUTH
PP	POWER POLE	E	DENOTES EAST
PP	POWER POLE & GUY	W	DENOTES WEST
PP	TREE WITH SIZE	PP	DENOTES POWER POLE