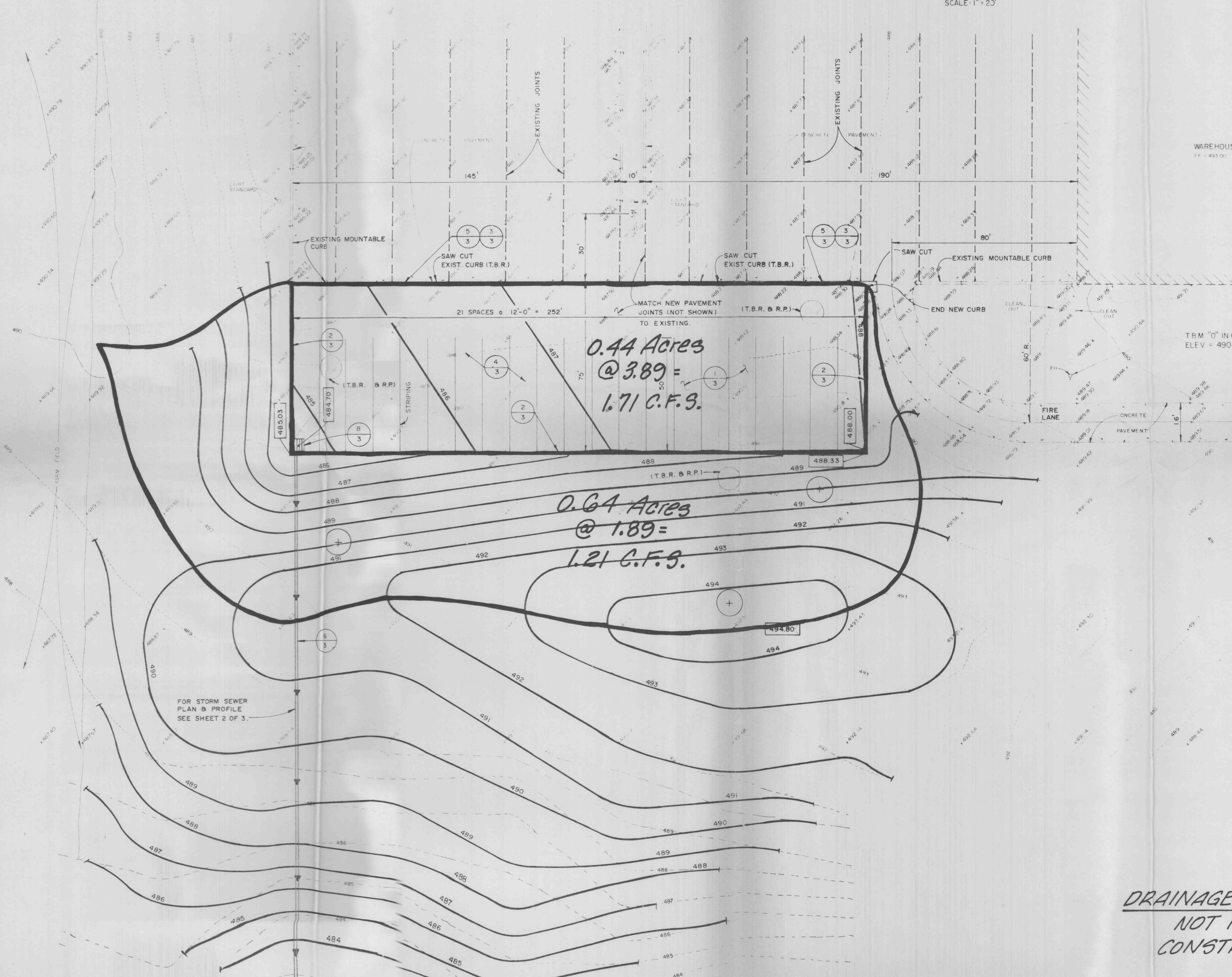


SCALE: 1" = 20'



204 west main street
bellville, illinois 62220
(618) 253-0616
KPK engineering, inc.
consulting engineers
8701 greene ave #3123
St. Louis, MO 63123
(314) 638-9998



LEGEND

- EXISTING CONTOUR 489
- NEW CONTOUR 489
- EXISTING SPOT ELEVATIONS 488.51
- NEW STORM SEWER PIPE
- EXISTING TREE
- RELOCATED TREE
- EXISTING PAVEMENT JOINTS
- NEW GRATE INLET
- CONCRETE PAVEMENT
- EXISTING CURB & GUTTER
- NEW CURB & GUTTER
- DETAIL NUMBER 1
- SHEET NUMBER 3
- NEW SPOT ELEVATION 488.00

ABBREVIATIONS

- T.B.R. TO BE REMOVED
- T.B.R.&R.P. TO BE REMOVED & REPLANTED
- EXIST. EXISTING

FOR STORM SEWER
PLAN & PROFILE
SEE SHEET 2 OF 3.

DRAINAGE AREA MAP
NOT FOR
CONSTRUCTION

DEVELOPER
ALDI INCORPORATED
P.O. BOX 8800
O'FALLON, MISSOURI
(314) 278-4700

PROJECT
**ALDI FACILITY
TRAILER PARKING EXTENSION**
O'FALLON, MISSOURI

TITLE
**DRAINAGE
AREA MAP**
PROJECT NO. 91-16
DATE SEPT. 18, 1991

SHEET
4
OF 4