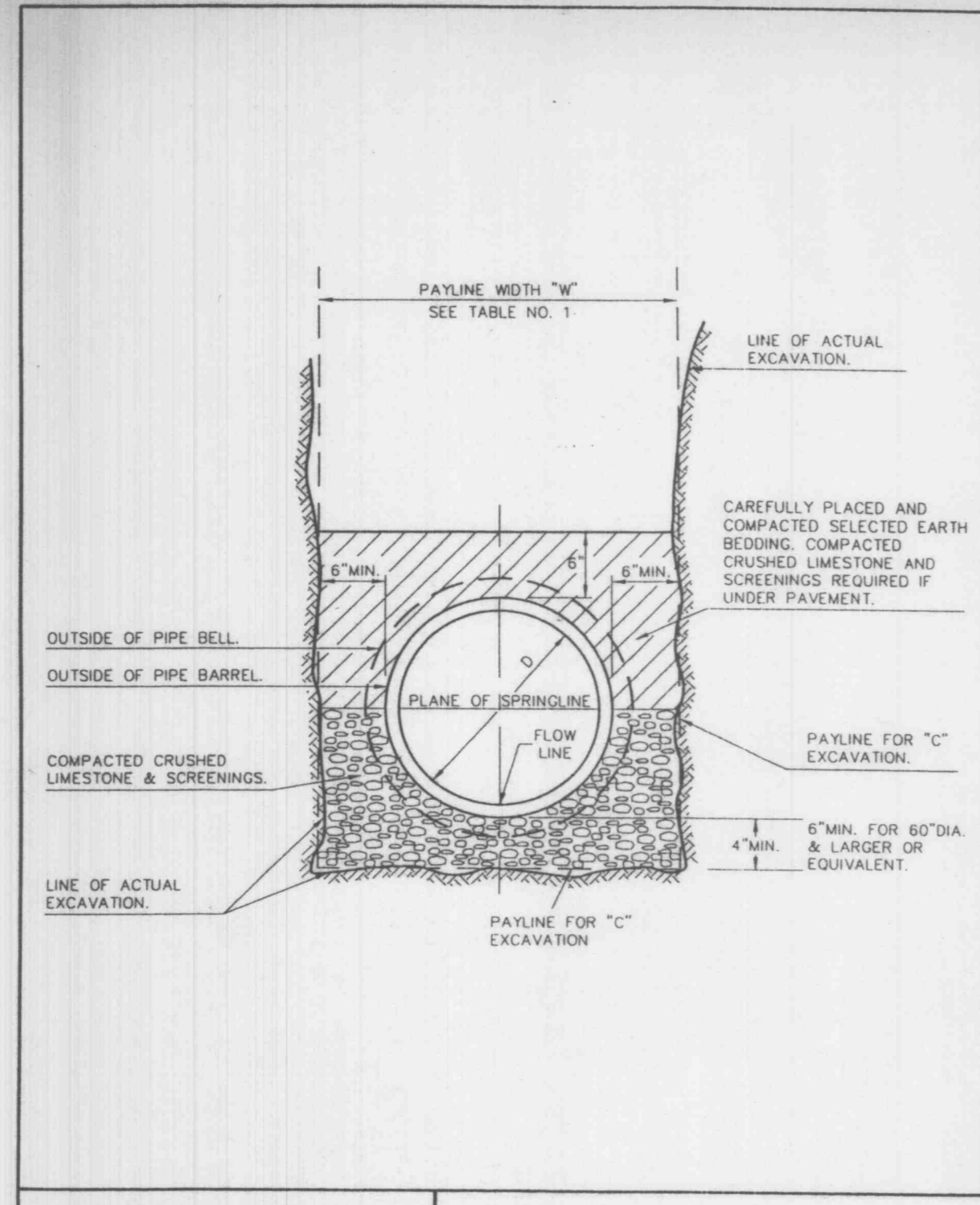
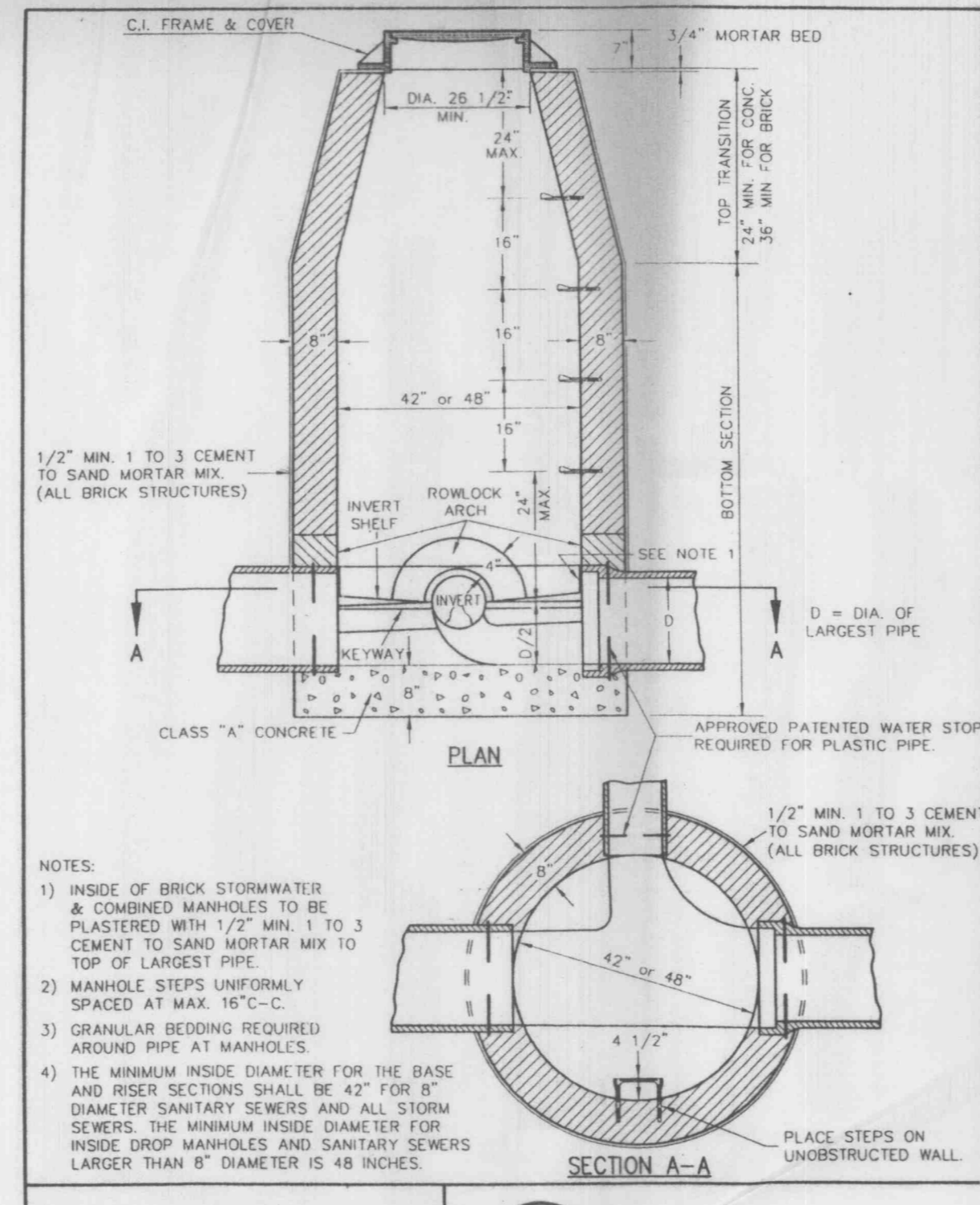


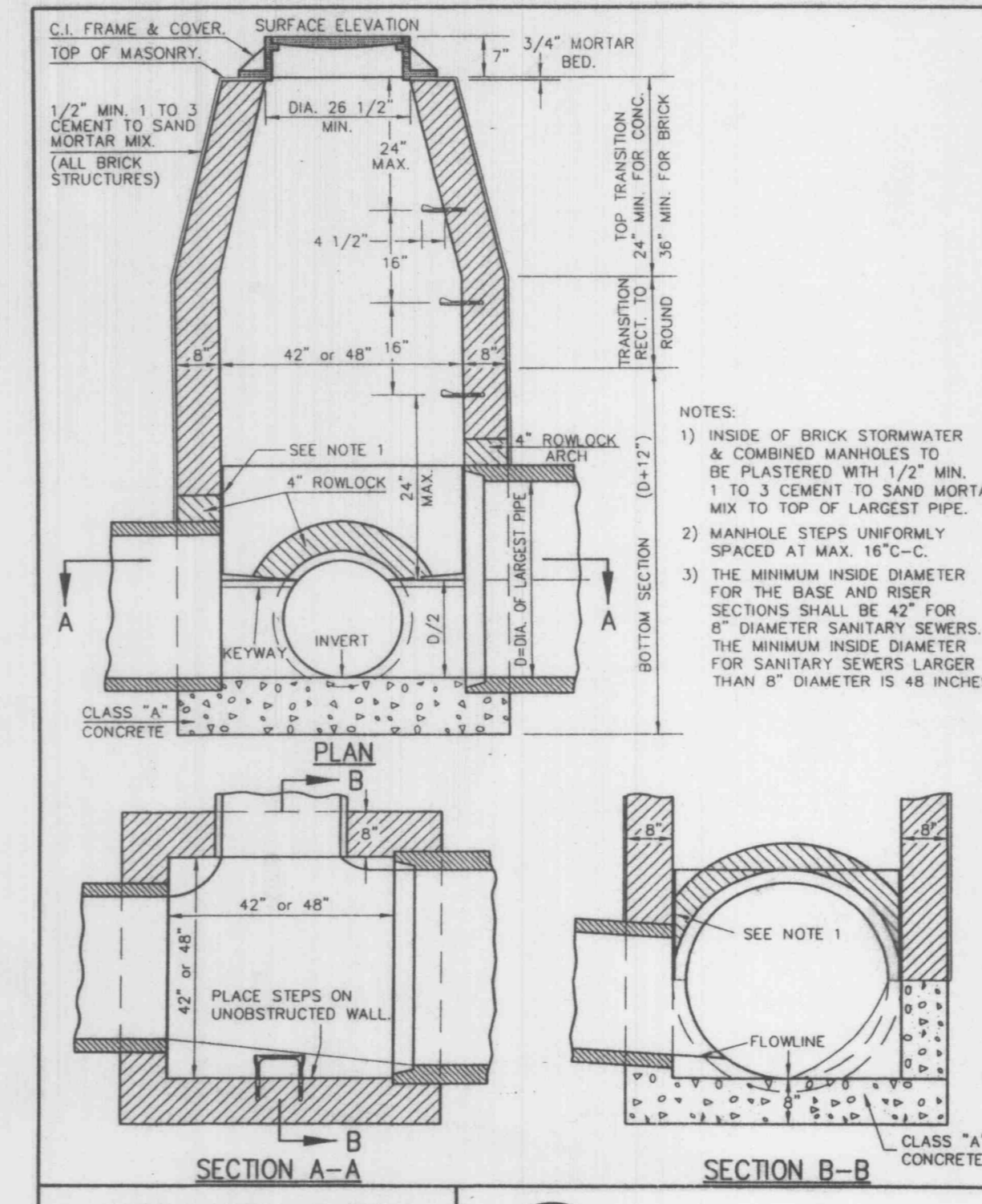
1 INLET FOR ROLLED TYPE CURB
NOTE: STEPS SHALL BE OF AN APPROVED DESIGN & MAY BE MADE OF CAST IRON, ALUMINUM OR A PLASTIC COATED STEEL.



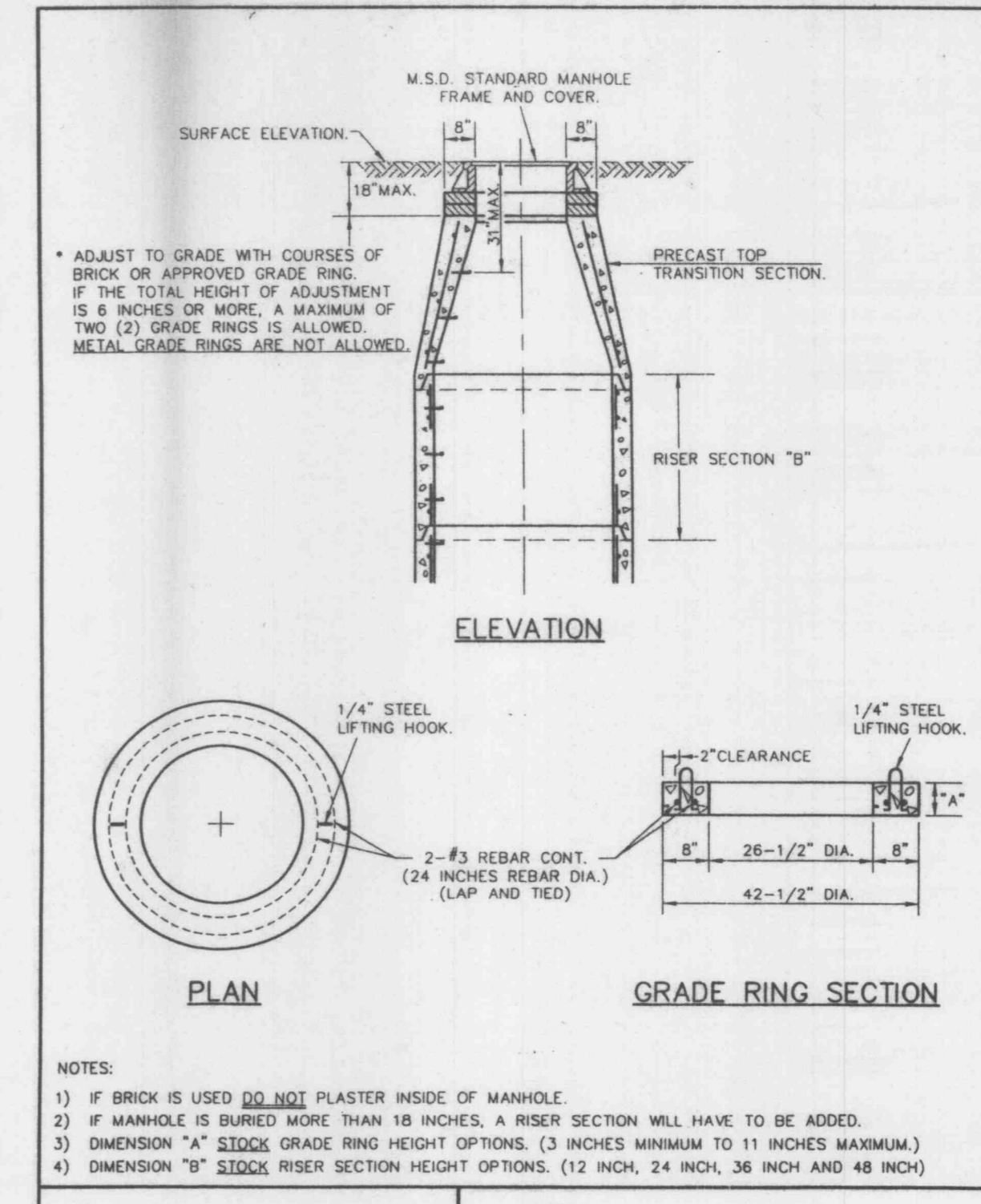
2 PIPE BEDDING CLASS "C" (MODIFIED FOR REINFORCED CONCRETE PIPE)



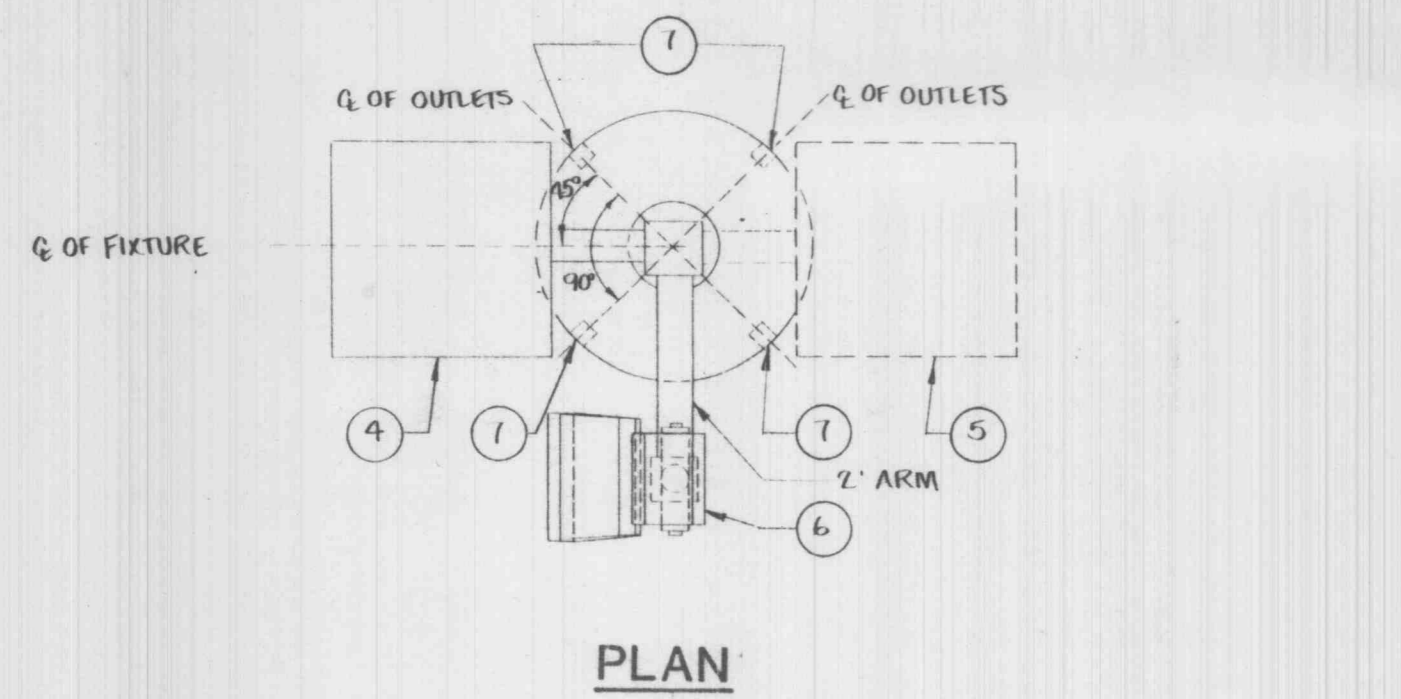
3 LINE MANHOLE PIPE SEWERS 8"-24" DIA.



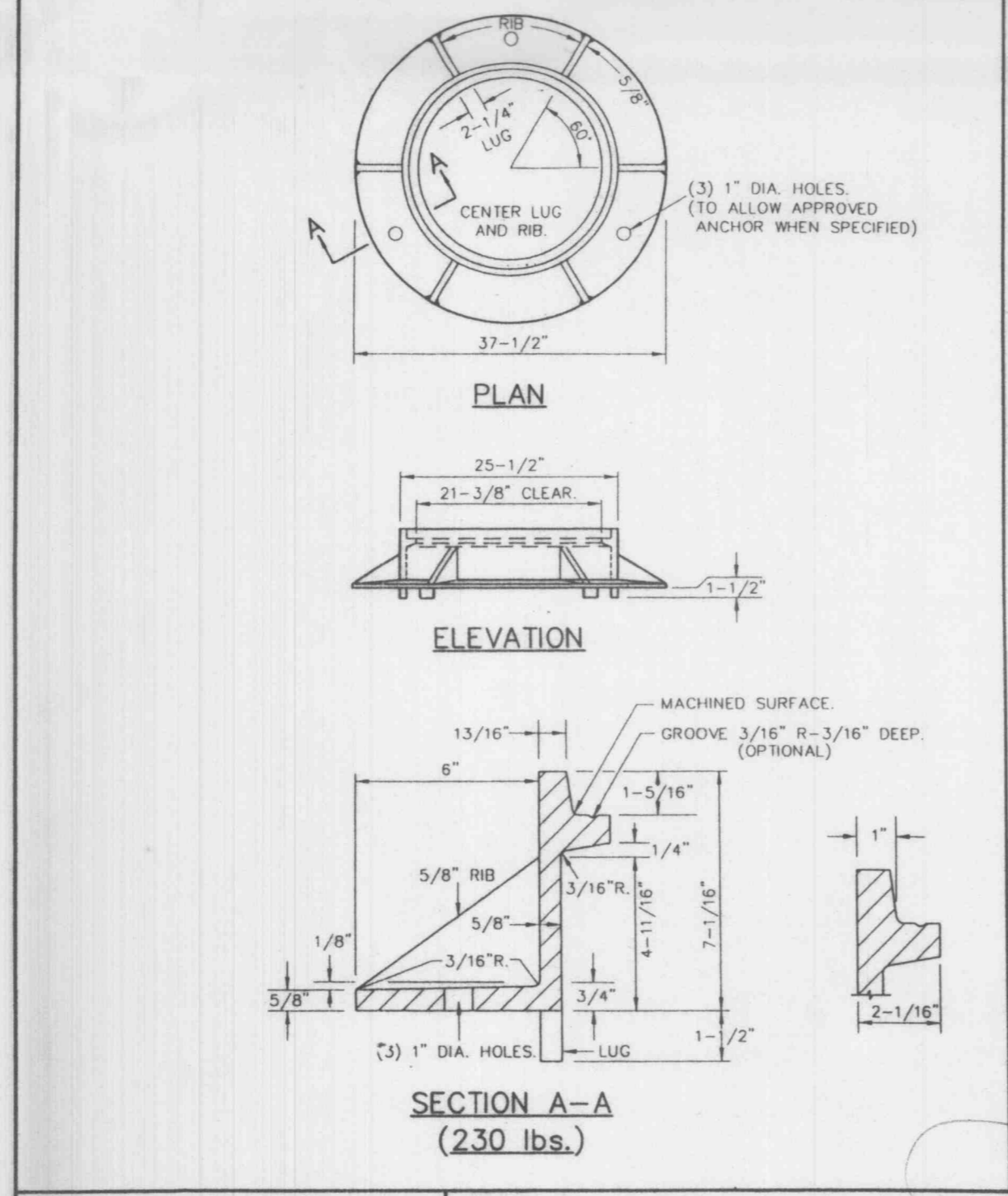
4 TYPICAL SEWER MANHOLE ON PIPE SEWER 27" THRU 42" IN DIAMETER



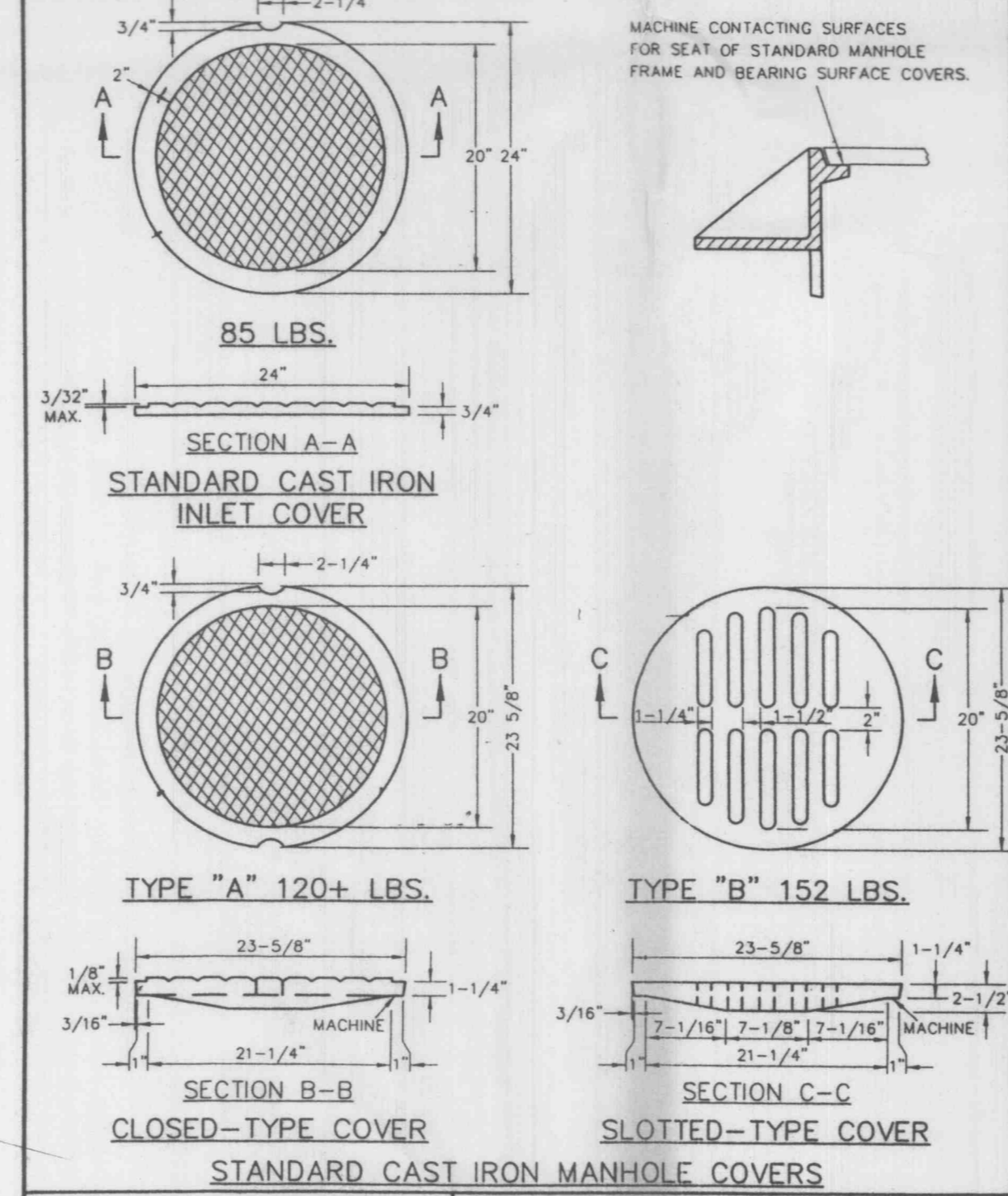
5 ADJUST TO GRADE



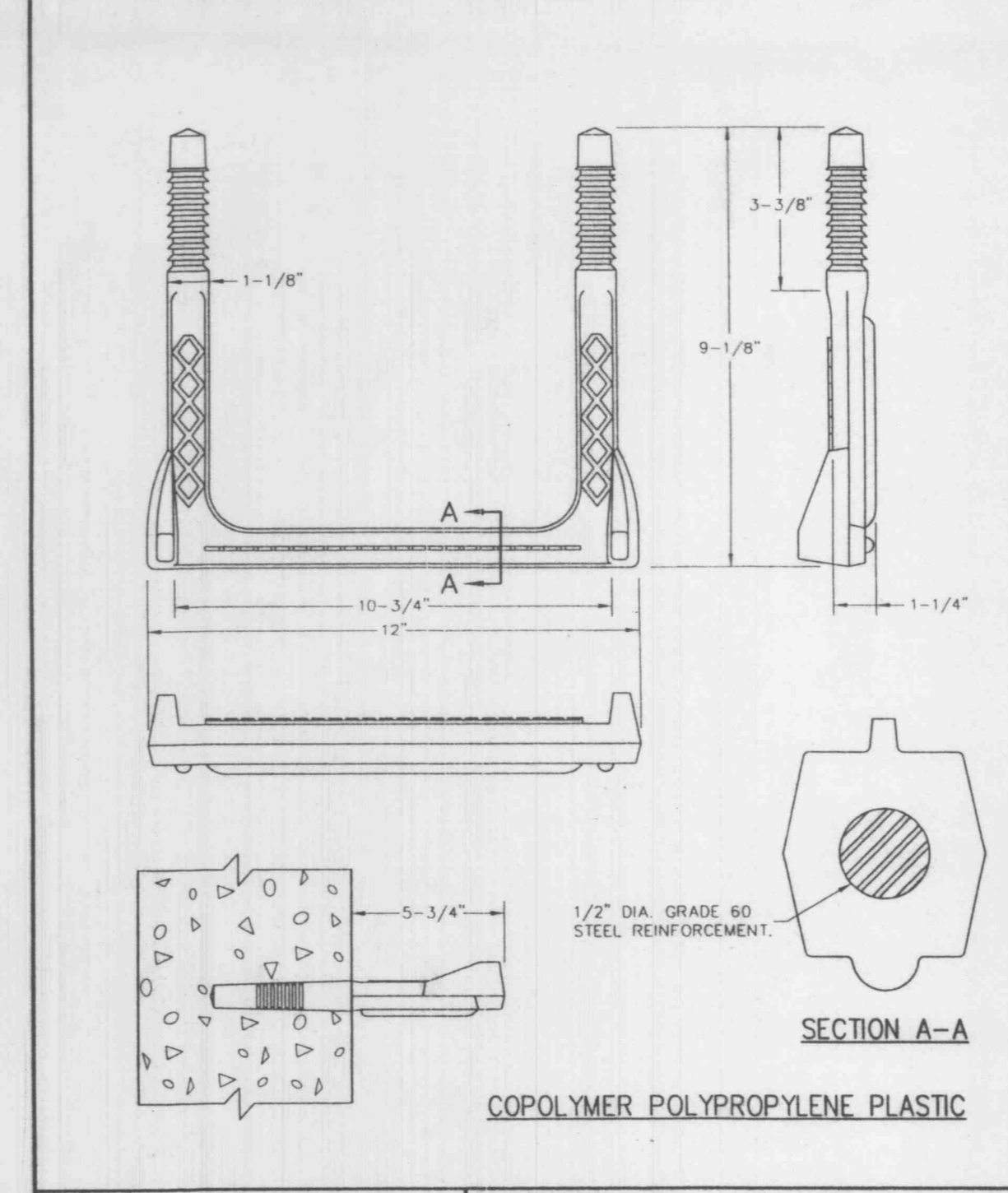
PLAN



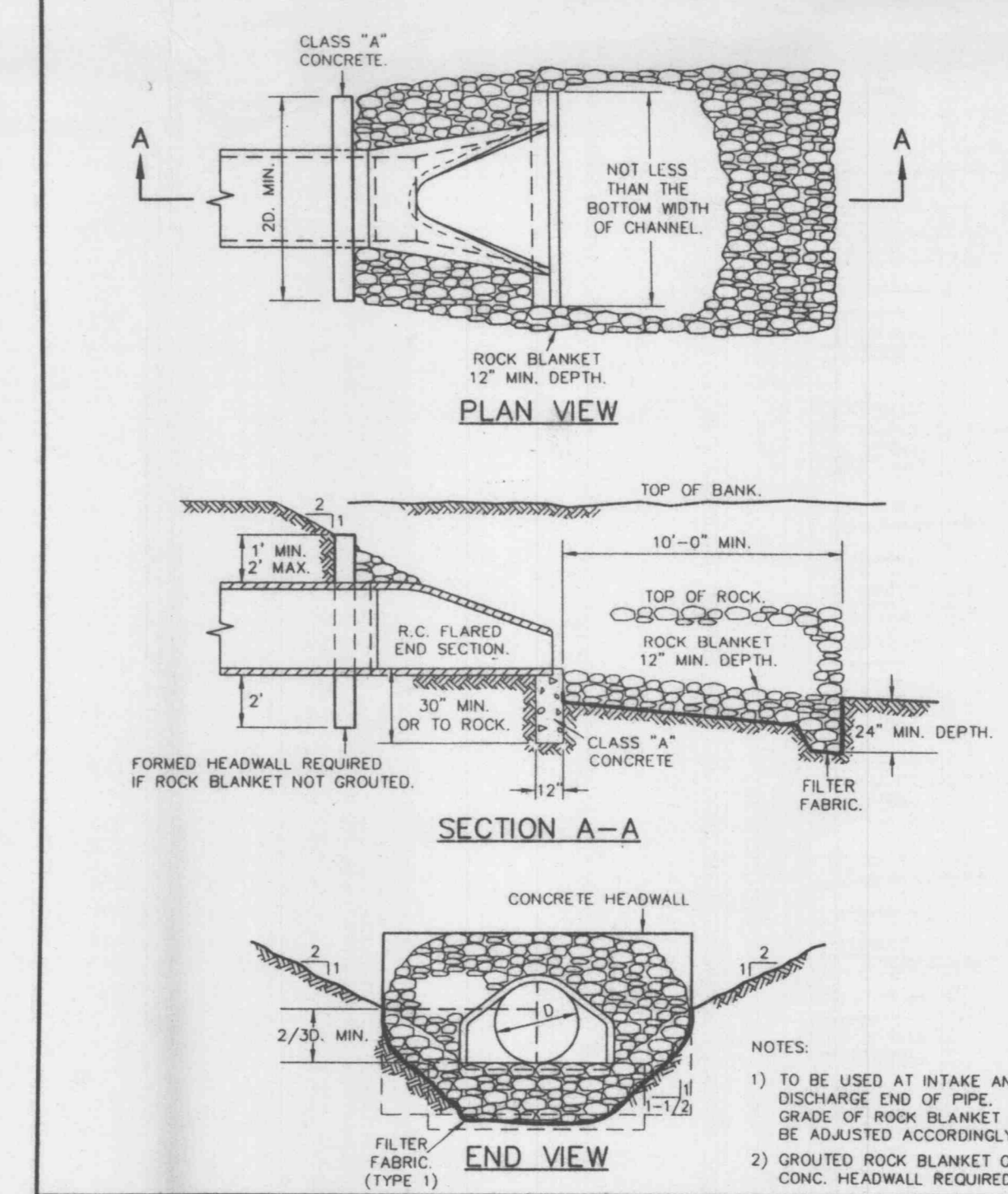
6 CAST IRON MANHOLE FRAME



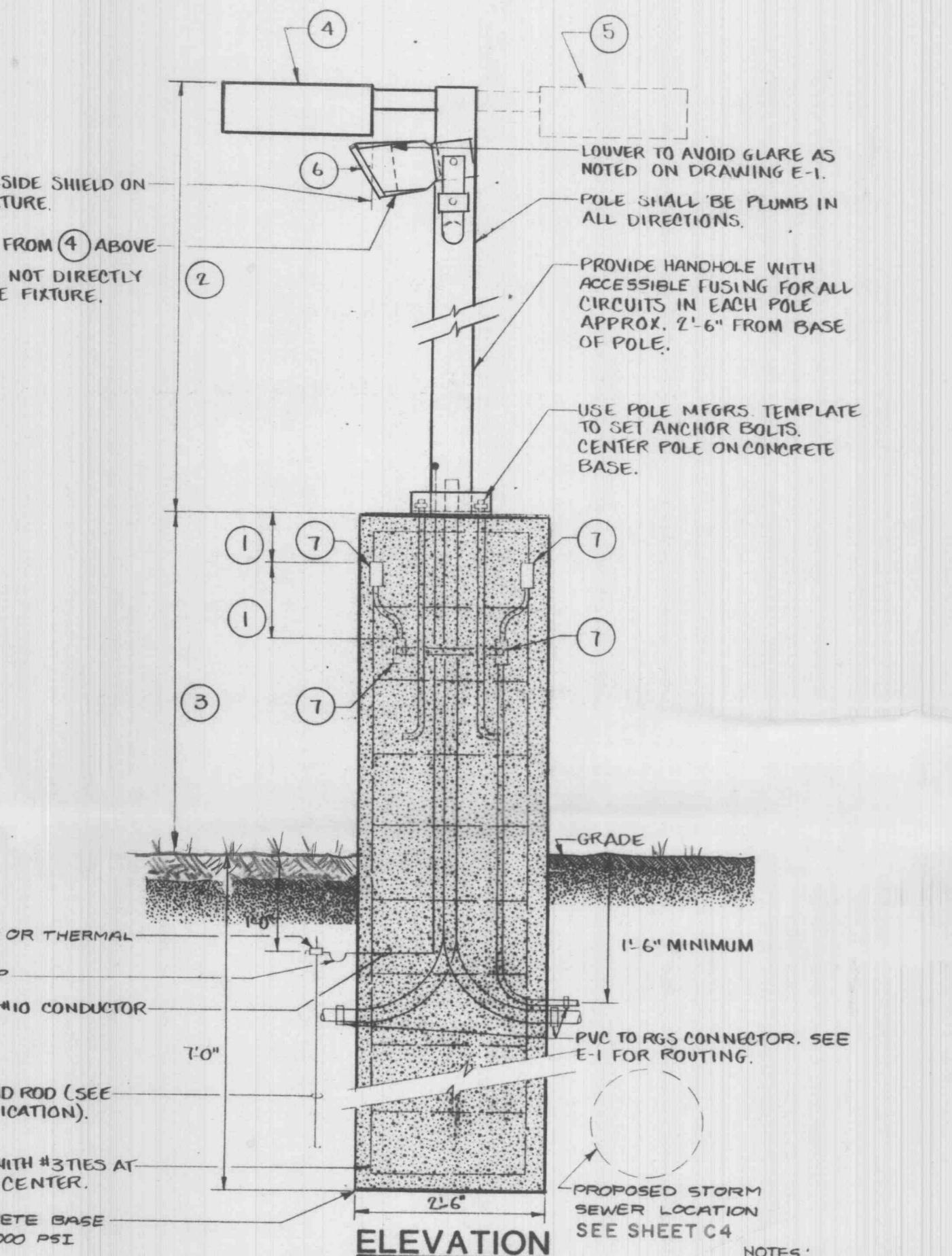
7 CAST IRON COVERS MANHOLES AND INLETS



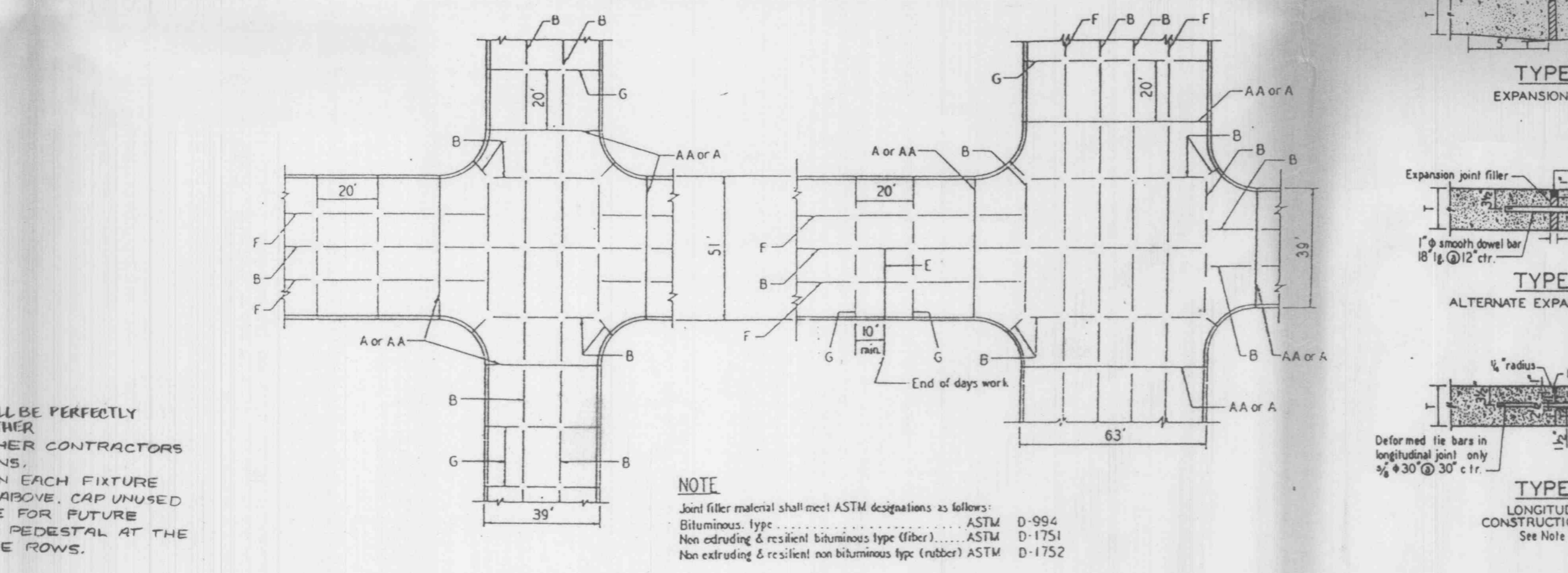
8 MANHOLE STEP FOR PRECAST & CAST-IN-PLACE MANHOLE



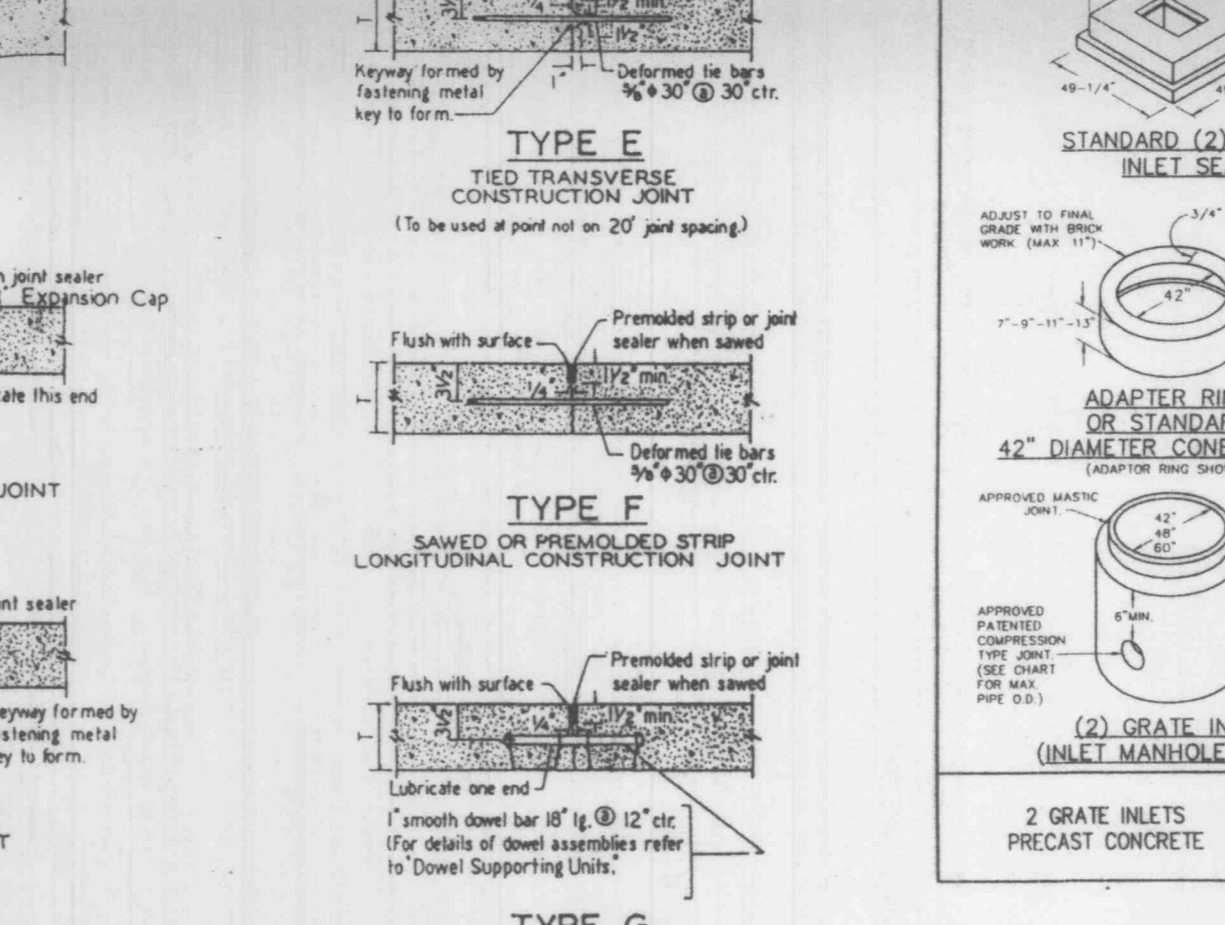
9 FLARED END SECTION



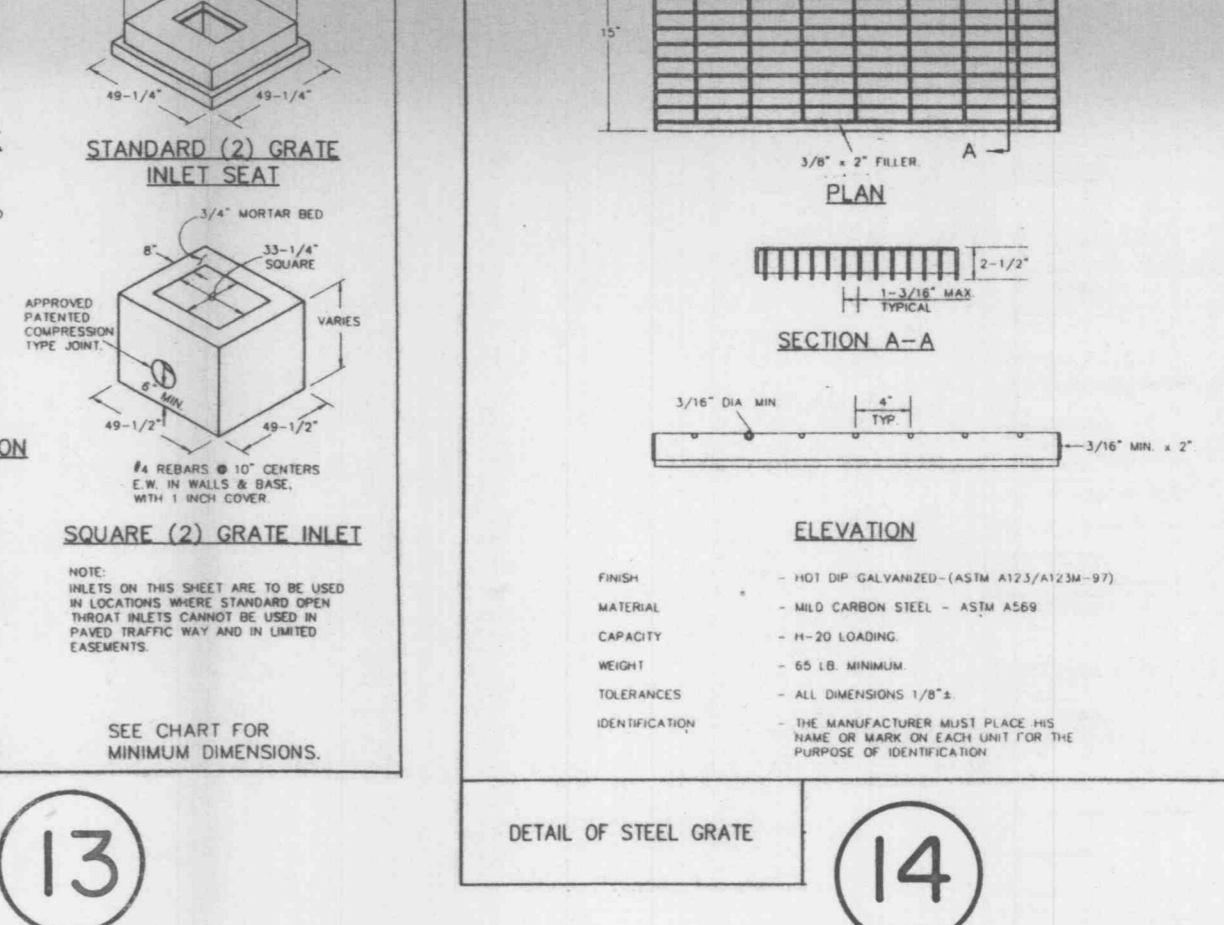
10 PEDESTAL/LIGHTING DETAIL
NO SCALE



11 PLAN OF JOINT LOCATION



12 JOINT DETAILS



14 DETAIL OF STEEL GRATE

PEDESTAL SEE NOTE 1	1	2	3	4	5	6	7
	N/A	25'-0"	5'-0"	FB	N/A	F26 EAST	N/A

- NOTES:
1. SYMBOLS RELATE TO DRAWING C-4
 2. FIXTURE NOTED IN COLUMN REPRESENTS SECOND HEAD AS STATED IN THE MATERIAL LIST.
 3. ONE (1) MOUNTED IN FLUSH CAST SWITCH BOX. EACH PEDESTAL REQUIRES 4 OUTLETS. WIRE A MAXIMUM OF 2 OUTLETS PER 120 VOLT CIRCUIT. SEE PANEL P5 SCHEDULE.
 4. "N/A" REPRESENTS "NOT APPLICABLE" FOR PEDESTAL NOTED.
 5. FIXTURE HEADS SHALL BE AT A UNIFORM ELEVATION ALONG FIXTURE ROWS. VERIFY EXACT PEDESTAL HEIGHT WITH OWNER'S REPRESENTATIVE.
 6. DIRECTION SHOWN INDICATES WHICH SIDE OF POLE FOR FIXTURE MOUNTING.
 7. ONE (1) MOUNTED IN FLUSH CAST SWITCH BOX. EACH PEDESTAL REQUIRES 2 OUTLETS FACING THE PARKING LOT AND WIRE A MAXIMUM OF 2 OUTLETS PER 120 VOLT CIRCUIT. SEE PANEL P5 SCHEDULE.

- GENERAL NOTES:
1. Do not scale drawing. Follow dimensions.
 2. All street inlets shall be separated from the pavement and curb by expansion joint material extending completely through curb and slab. Manhole casting within the pavement limits shall be noted as shown in the "Sewer Construction Details".
 3. When a joint falls within 5 ft. of a contact side, manhole, or other structure, shorten one or more panels either side of opening to permit joint to fall on road structures and at or between centers of rectangular structures.
 4. Minimum thickness of concrete pavement is 4 inches.
 5. Construction joint and tie bars may be omitted when curb is poured integral with pavement.
 6. Type F joint for full width construction and Type B joint for half width construction.
 7. Refer to Pavement Construction Details, Joints and Curbs for joint and tie bar requirements. Note that width and location of each covered portion of the pavement may change the type and location of joint required.
 8. Transverse or longitudinal construction joints in slabs formed pavements may be made with a groove or tool, if such device has been approved in advance.
 9. The location of the Type B and Type F longitudinal construction joints in the sections may be interchanged for the different widths of construction if approved.
 10. LONGITUDINAL CONSTRUCTION JOINTS SHALL BE AT A MAXIMUM INTERVAL DISTANCE OF TWENTY-FIVE (25) FEET AND TRANSVERSE CONSTRUCTION JOINTS SHALL BE AT A MAXIMUM INTERVAL DISTANCE OF TWENTY (20) FEET WITHIN TRUCK APRON PARKING AREAS.

- NOTE: THE PAVING SUBCONTRACTOR IS TO EXAMINE THE EXISTING EXPANSION, LONGITUDINAL AND TRANSVERSE JOINTS PREVIOUSLY INSTALLED.

PROJECT NO. 00-225
DESIGN BY: R.J.
DRAWN BY: C.B.
APPROVED BY: R.J.
DATE

ISSUE

NO. DATE

distribution facility expansion
OF FALLON, MISSOURI

STANDARD DETAILS
PREPARED BY: **Berutti**
BERUTTI & ASSOCIATES, INC.
ENGINEERS / PLANNERS / SURVEYORS

STATE OF MISSOURI
REGISTERED PROFESSIONAL ENGINEER
NO. 16309
EXPIRES 12/31/2011

SHEET C7 OF 8