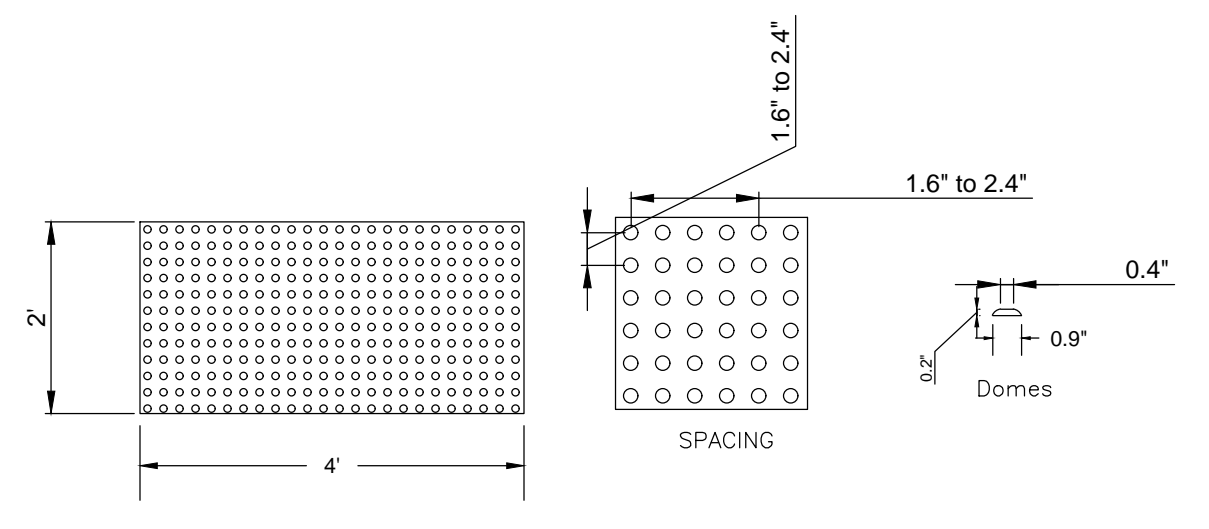
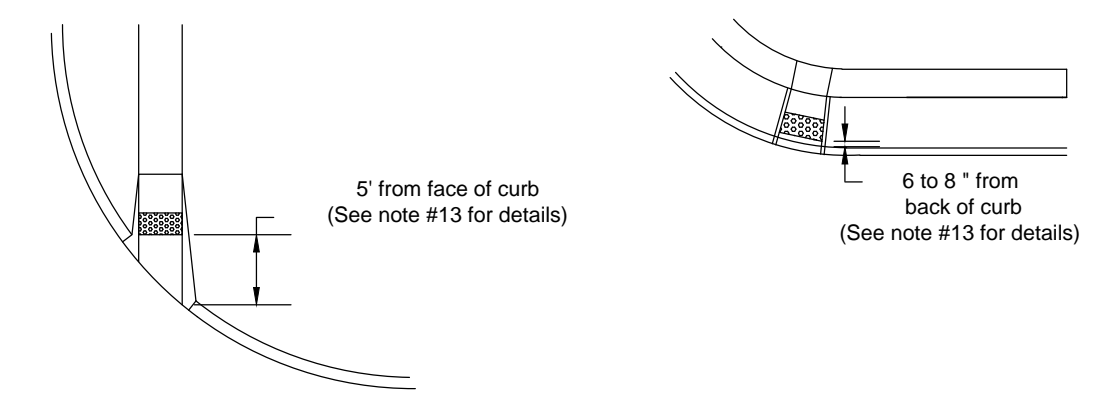


**ASPHALT PAVEMENT
(DRIVE AISLES AND PARKING)**
N.T.S.

NOTE:
THE ASPHALT SURFACE SHALL BE COMPACTED TO 98% MAX. DENSITY.

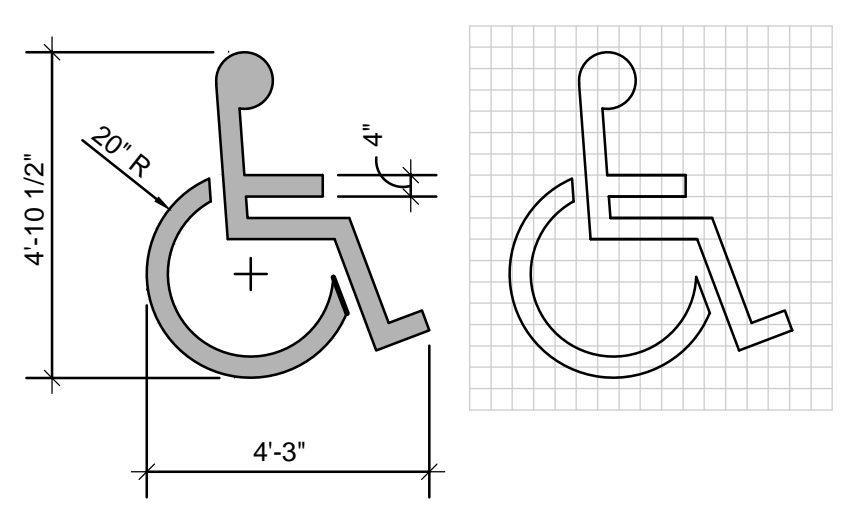


Truncated Domes



Placement of Truncated Domes

NOTE:
TRUNCATED DOMES FOR ALL CURB RAMP LOCATED IN PUBLIC RIGHT-OF-WAY SHALL MEET ADA REQUIREMENTS AND SHALL BE CONSTRUCTED USING RED PRE-CAST TRUNCATED DOMES SUCH AS THOSE MANUFACTURED BY ARMOR TILE OR APPROVED EQUAL.

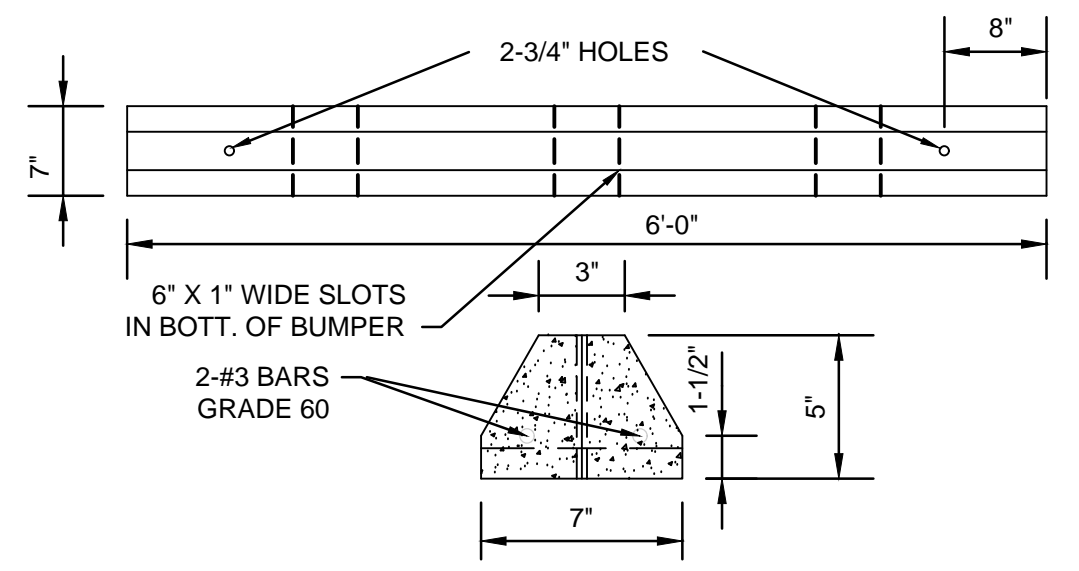


ACCESSIBILITY SYMBOL
PAINTED ON PAVEMENT

* TO BE BLUE IN COLOR, UNLESS OTHERWISE SPECIFIED.

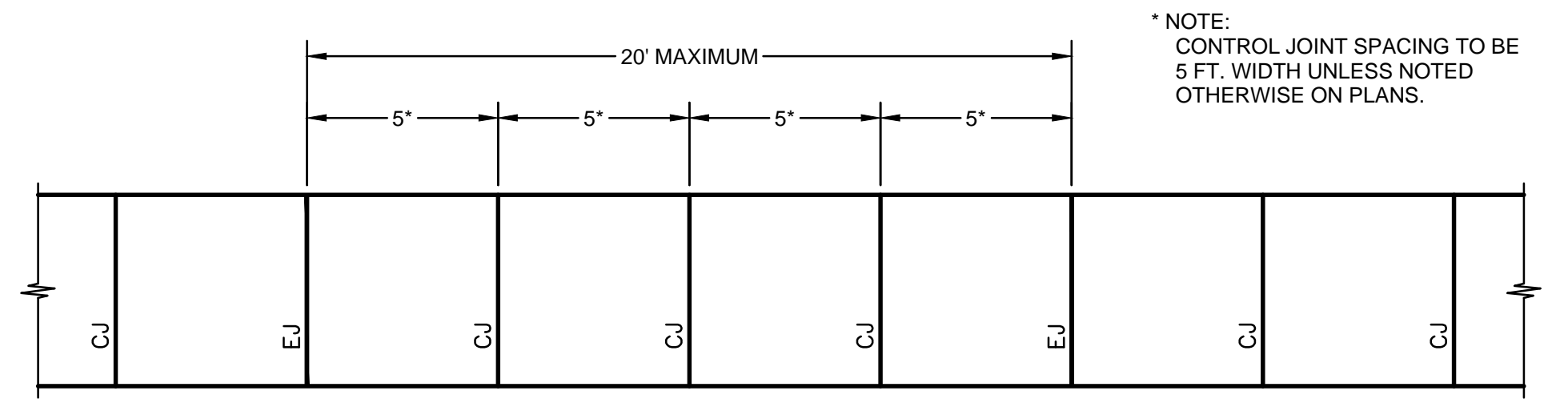
**ACCESSIBLE PARKING
PAINTED SYMBOL DETAIL**
N.T.S.

PROPORTIONING GUIDE



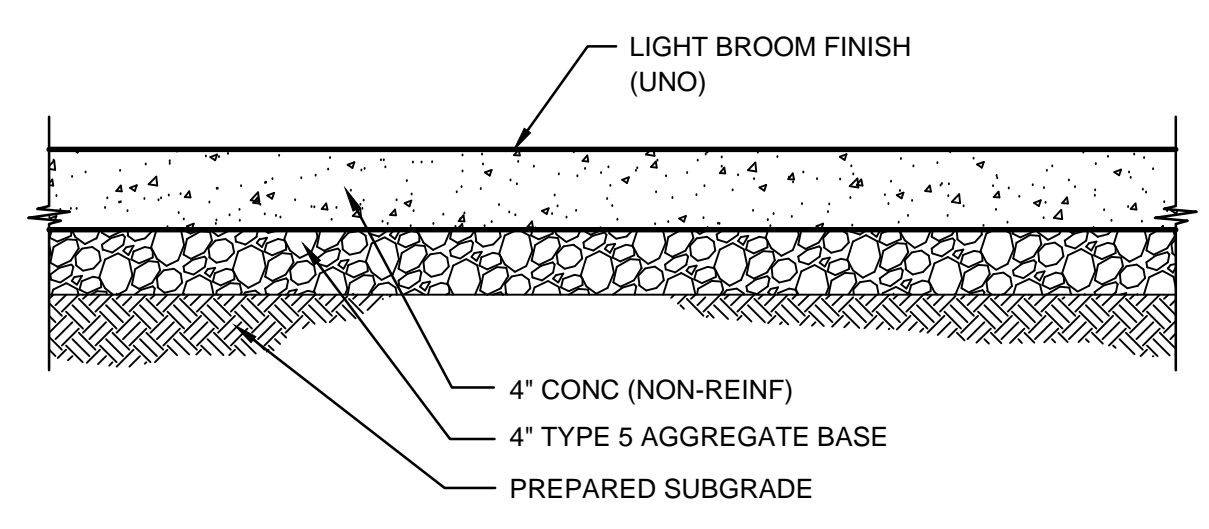
NOTES:
1. PORTLAND CEMENT CONCRETE SHALL HAVE THE FOLLOWING CHARACTERISTICS: 4000 PSI MIN. COMPRESSIVE STRENGTH @ 28 DAYS, 6-8 SACKS OF CEMENT PER CUBIC YARD WITH A MAX. WATER / CEMENT RATIO OF 0.45, AIR ENTRAINMENT 6.5% ; 1.5%, SLUMP AT 1-4 INCHES. ALL MATERIALS SHALL CONFORM TO SSPWC SECTION 202.
2. BUMPERS SHALL BE SECURED WITH 2-#3 BARS, EMBEDDED A MIN. OF 13" BELOW BOTTOM OF BUMPER. THE REBARS SHALL BE FLUSH WITH TOP OF BUMPER.

**CONCRETE
WHEEL STOP**
N.T.S.



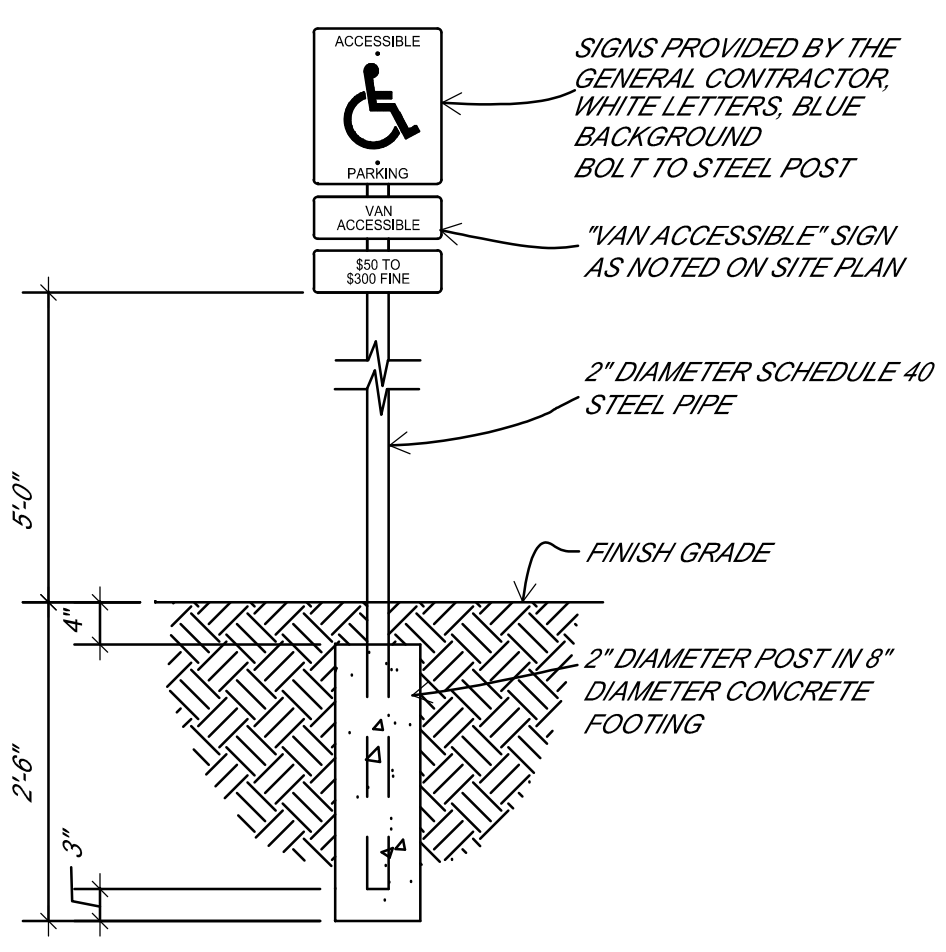
PLAN

EJ = EXPANSION JOINT
CJ = CONTROL JOINT



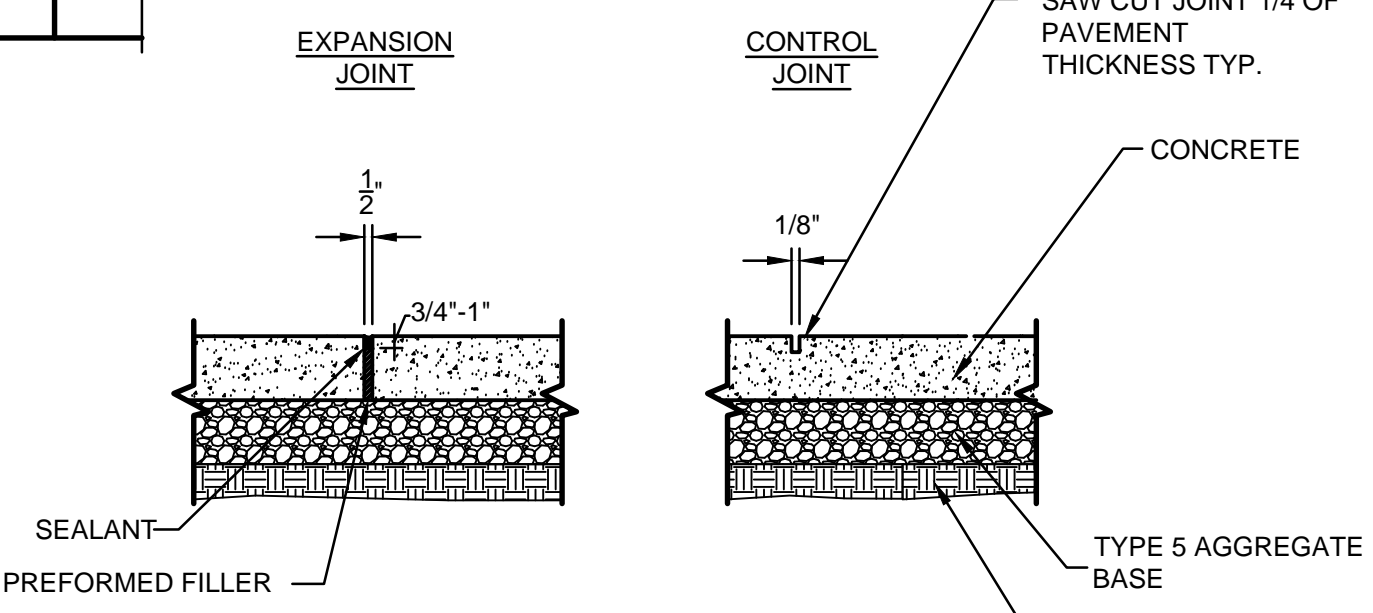
SECTION

CONCRETE SIDEWALK
N.T.S.



ACCESSIBLE PARKING SIGN DETAIL
N.T.S.

NOTE:
1. SIGN POSTS AND BACK SHALL BE PAINTED TO CONFORM TO NOTE RN #19 ON SHEET C1.2.



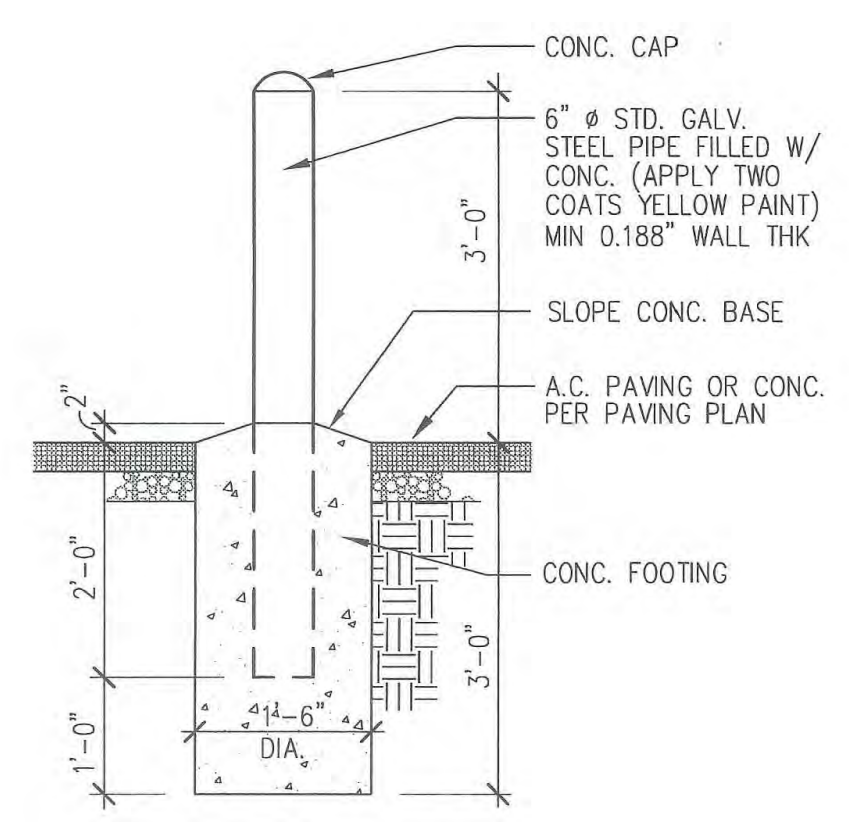
TYPICAL CONCRETE SIDEWALK JOINT DETAIL
N.T.S.

NOTES:
1. EXPANSION JOINTS SPACED AT 20' INTERVALS.
2. CONTROL JOINTS SHALL BE SAWS AND SEALED JOINTS.
3. SELF LEVELING SEALANT IS NOT ACCEPTABLE. CONTRACTOR SHALL PROVIDE PRODUCT DATA AND COLOR INFORMATION TO OWNER FOR APPROVAL.
4. ALL NON-REINFORCED CONCRETE SHALL BE 4,000 PSI @ 28 DAYS.

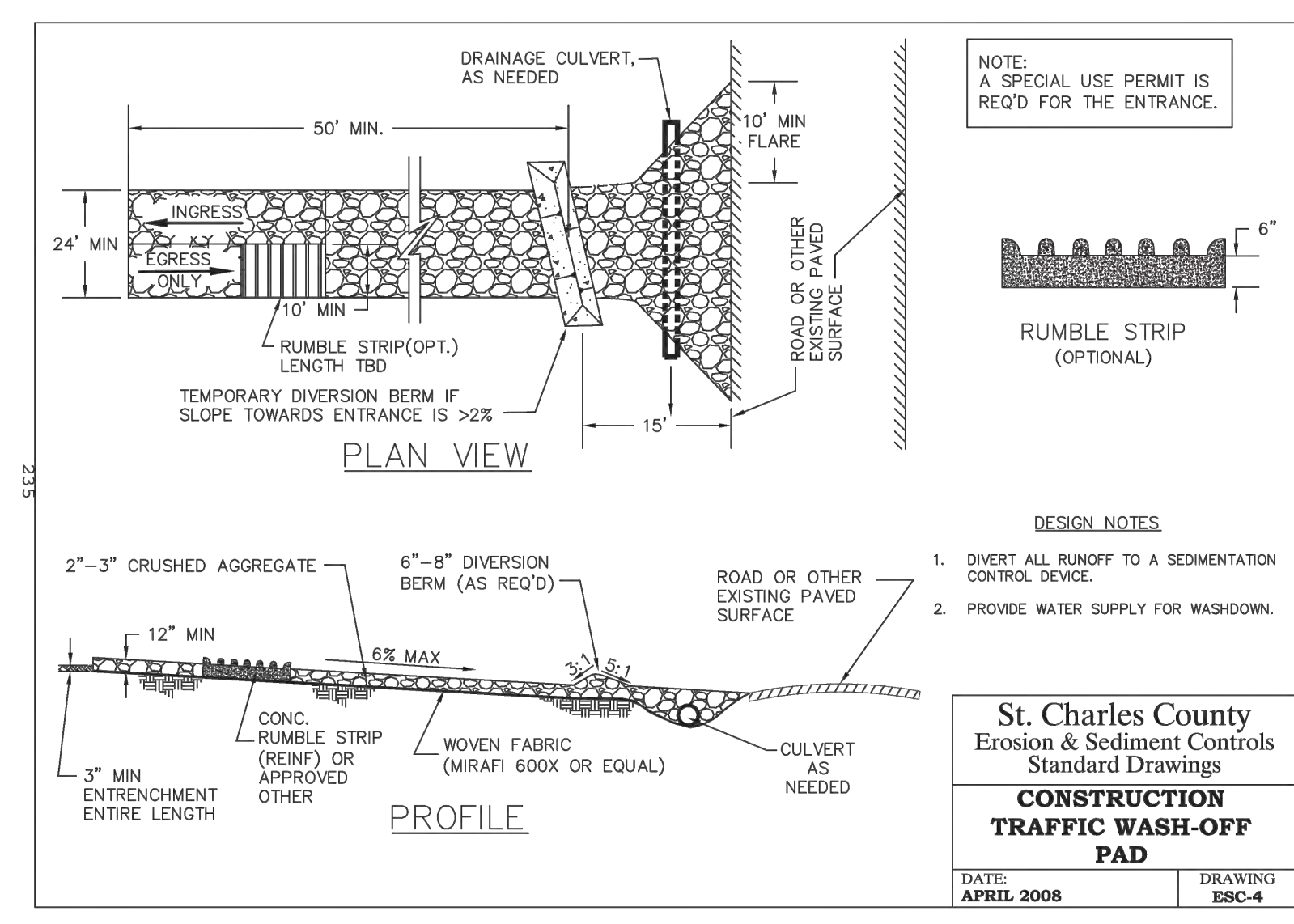


**PROPOSED BIKE RACK
(OR EQUAL)**

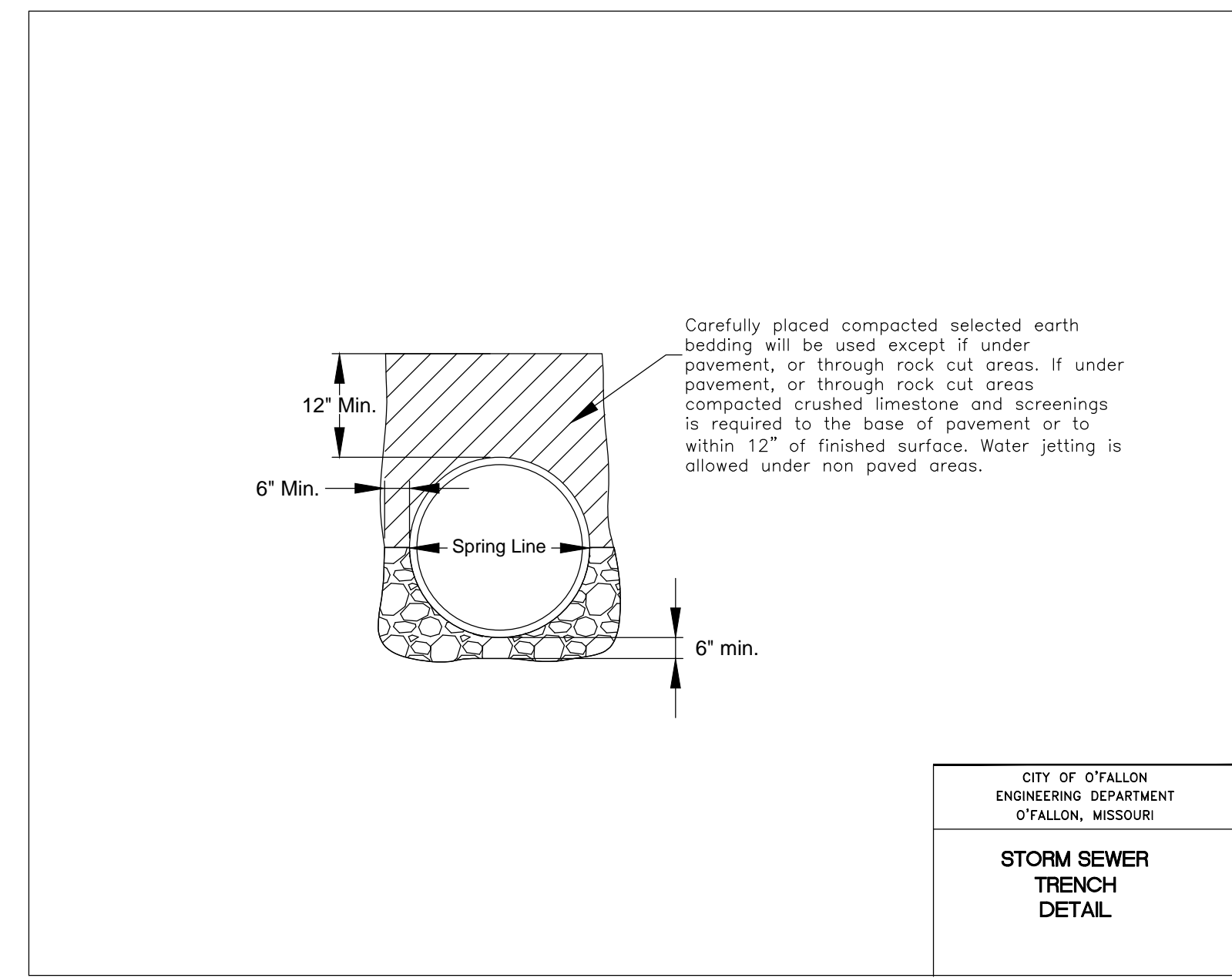
NOTE: INSTALL PER MANUFACTURERS SPECIFICATIONS.



BOLLARD DETAIL
N.T.S.



St. Charles County
Erosion & Sediment Controls
Standard Drawings
**CONSTRUCTION
TRAFFIC WASH-OFF
PAD**
DATE: APRIL 2008 DRAWING: ESC-4



CITY OF O'FALLON
ENGINEERING DEPARTMENT
O'FALLON, MISSOURI
**STORM SEWER
TRENCH
DETAIL**

NO.	DATE	REVISION

STATE OF MISSOURI
APRIL M. GIESMAN
PROFESSIONAL ENGINEER
E-2001004592
5/24/18

HORNER SHIFRIN
101 LAURA K DRIVE, STE. 101 O'FALLON, MO 63366-3891
636-329-9296 * FAX 636-339-2910 * WWW.HORNERSHIFRIN.COM
DISCIPLINE: PROFESSIONAL ENGINEERING
CERTIFICATE OF AUTHORITY: 000159
EXPIRATION DATE: DECEMBER 31, 2018

ALPHA & OMEGA ROASTING
111 N. MAIN STREET

DATE: 05/24/2018
DESIGNED: AMH
DRAWN: AMH
CHECKED: AMG
JOB NO. 1803000
REF. NO. N/A

C6.1

DWG: C:\projects\jagatagan\details\1077\Details.dwg PLOT DATE: 5/24/2018 2:15:29 PM OPERATOR: JAATAGANA

DETAILS