

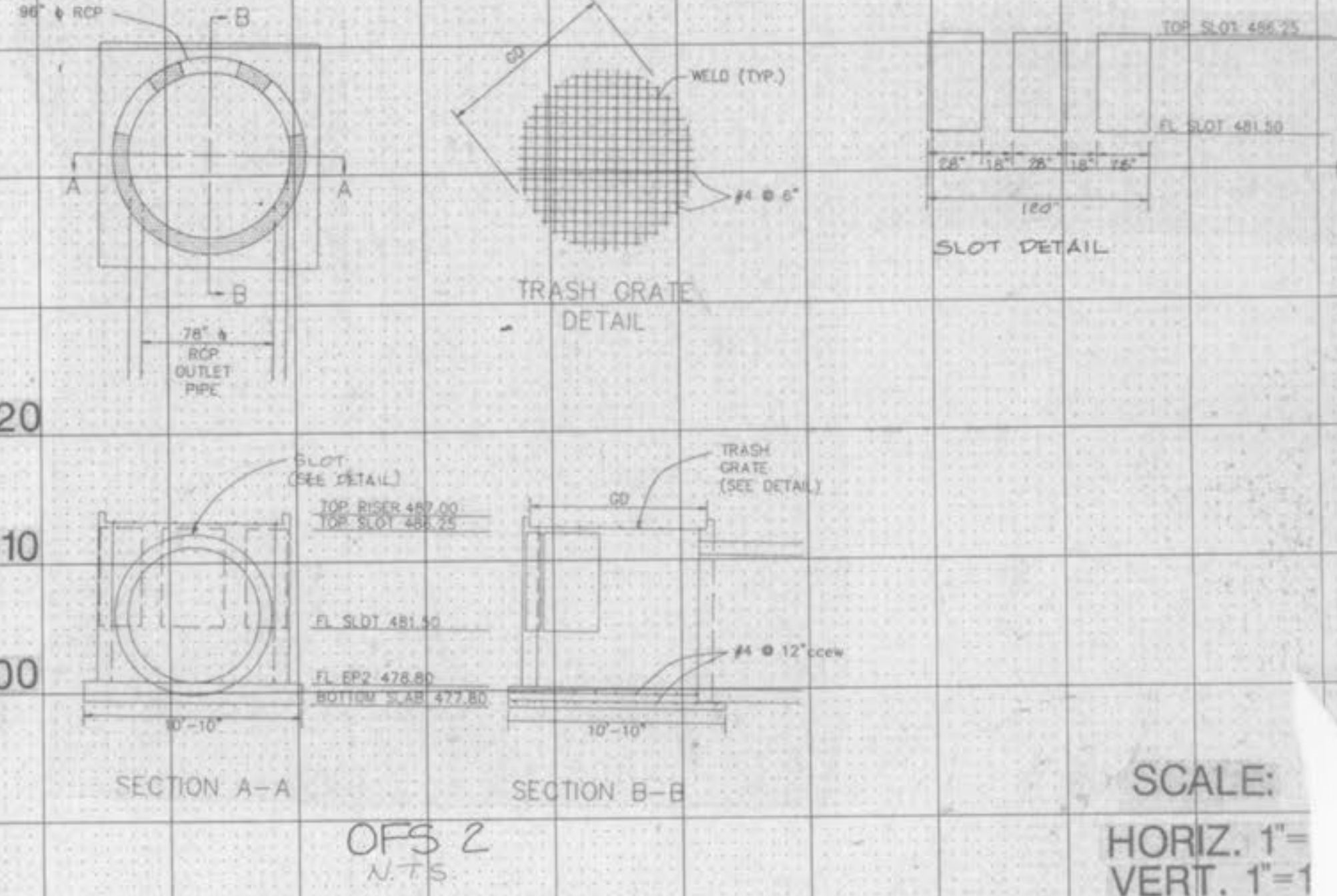
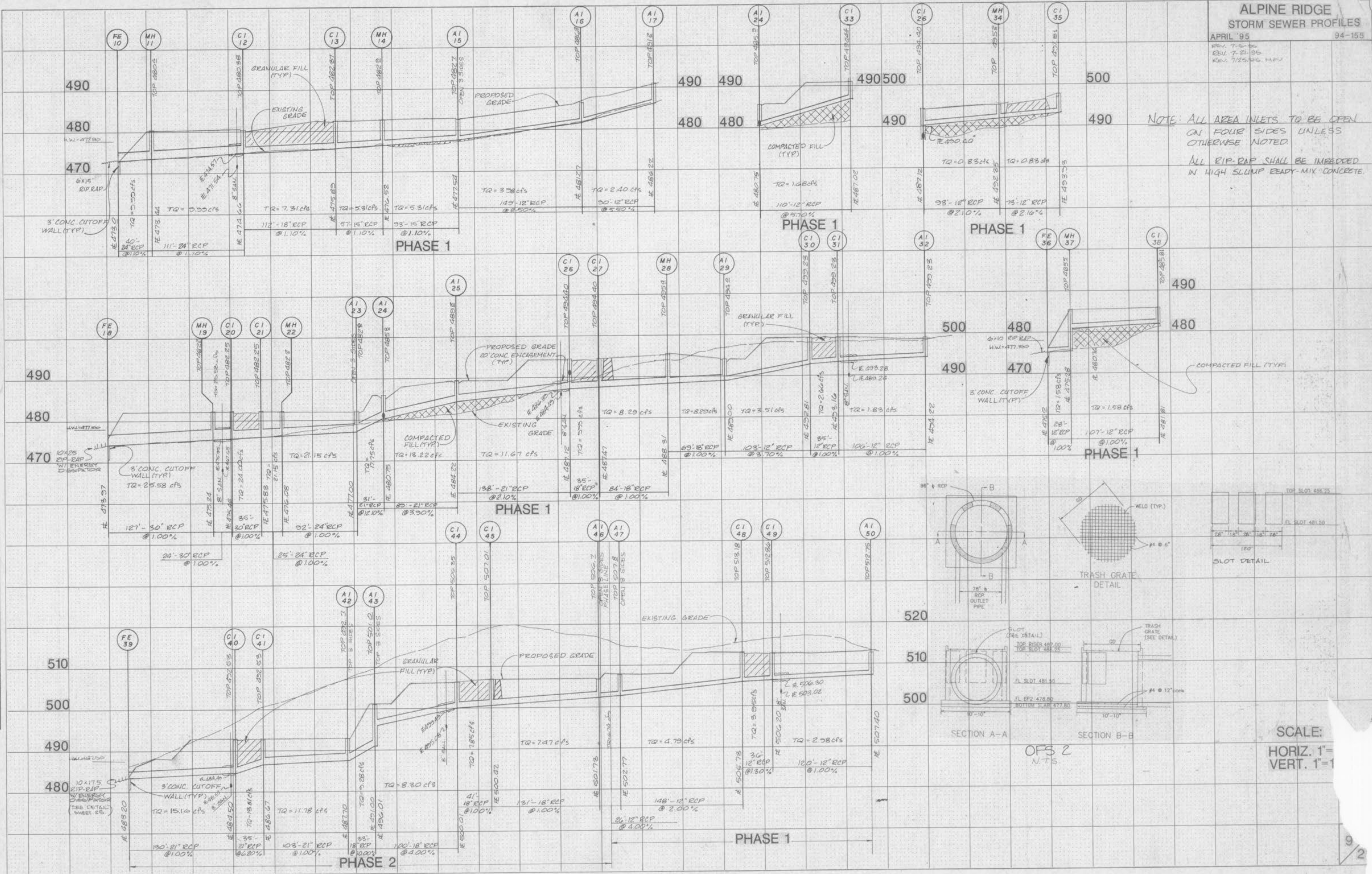
ALPINE RIDGE
STORM SEWER PROFILES

APRIL '95
REV. 7-21-95
REV. 7/25/95, M.P.V.

NOTE: ALL AREA INLETS TO BE OPEN ON FOUR SIDES UNLESS OTHERWISE NOTED.
ALL RIP-RAP SHALL BE IMBEDDED IN HIGH SLUMP READY-MIX CONCRETE.

FINAL SURVEY BY DATE
INVESTED PLOTTED
NOTE BOOK TEMPLATE
AREA CHECKED

ORIGINAL SURVEY BY DATE
INVESTED PLOTTED
NOTE BOOK TEMPLATE
AREA CHECKED



SCALE:
HORIZ. 1" = 10'
VERT. 1" = 1'