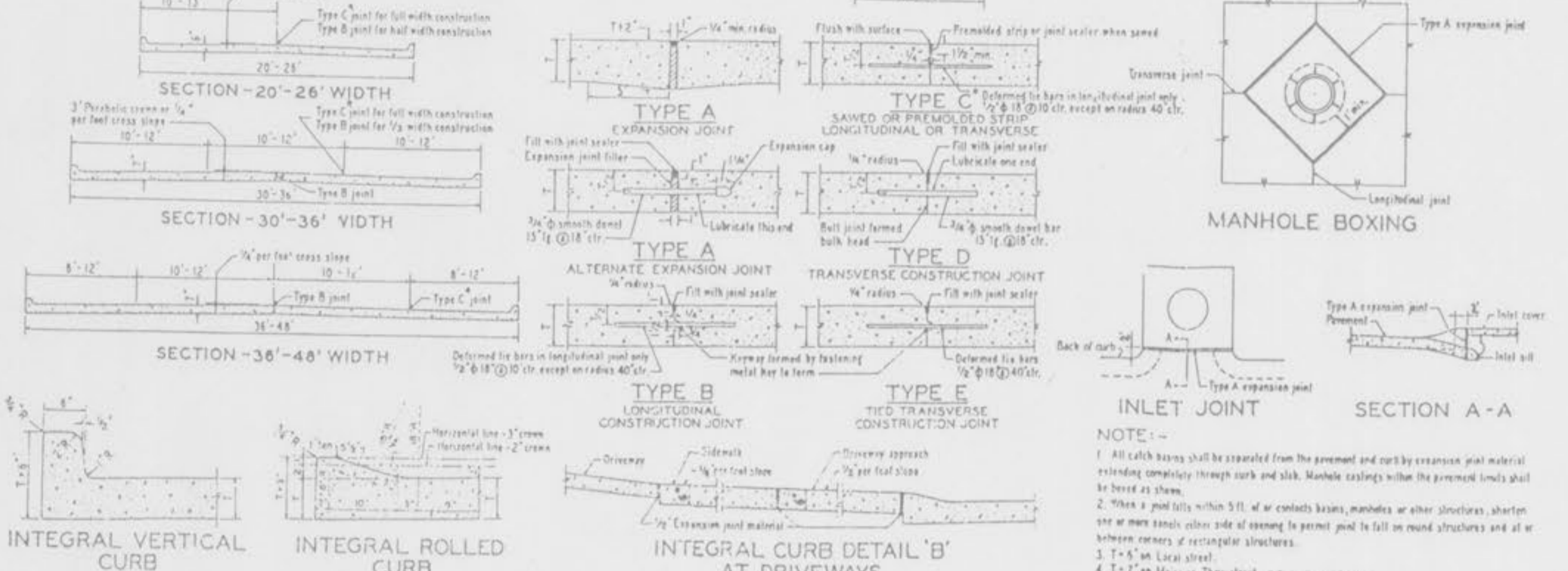
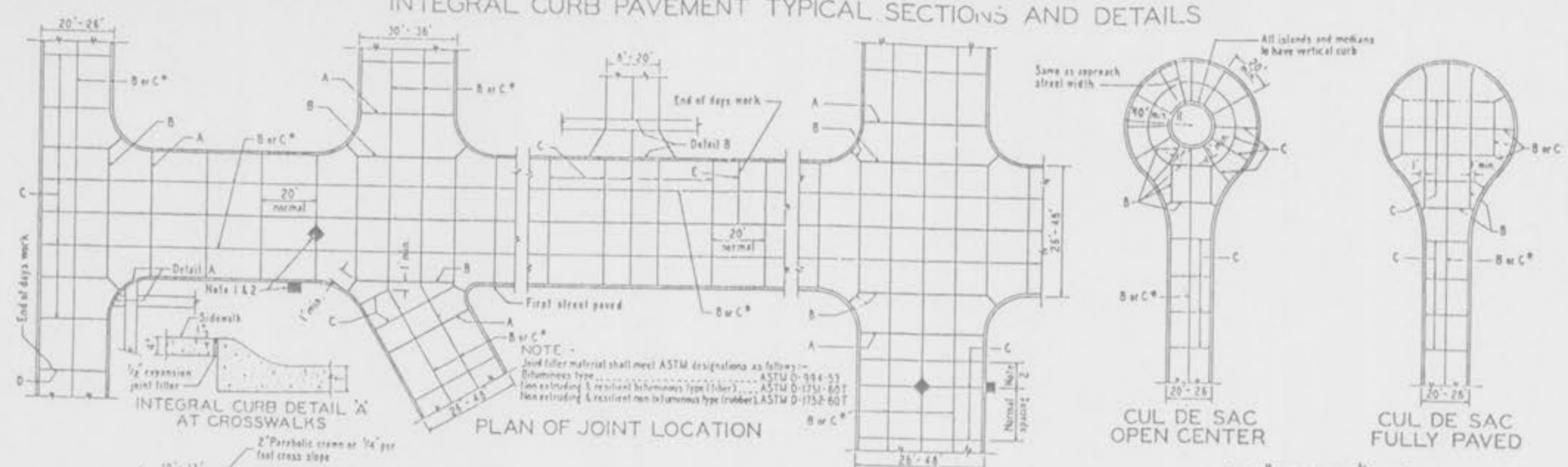
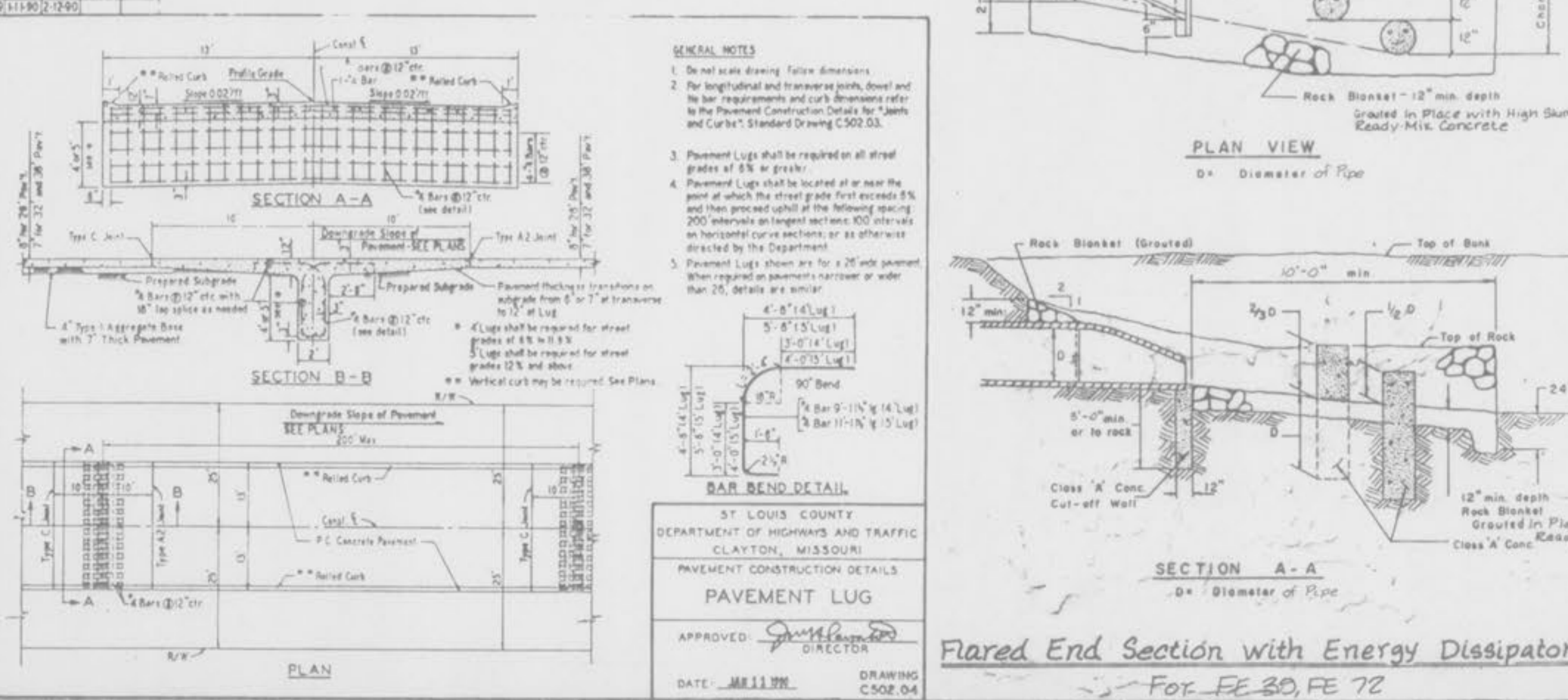


PORTLAND CEMENT CONCRETE
INTEGRAL CURB PAVEMENT TYPICAL SECTIONS AND DETAILS

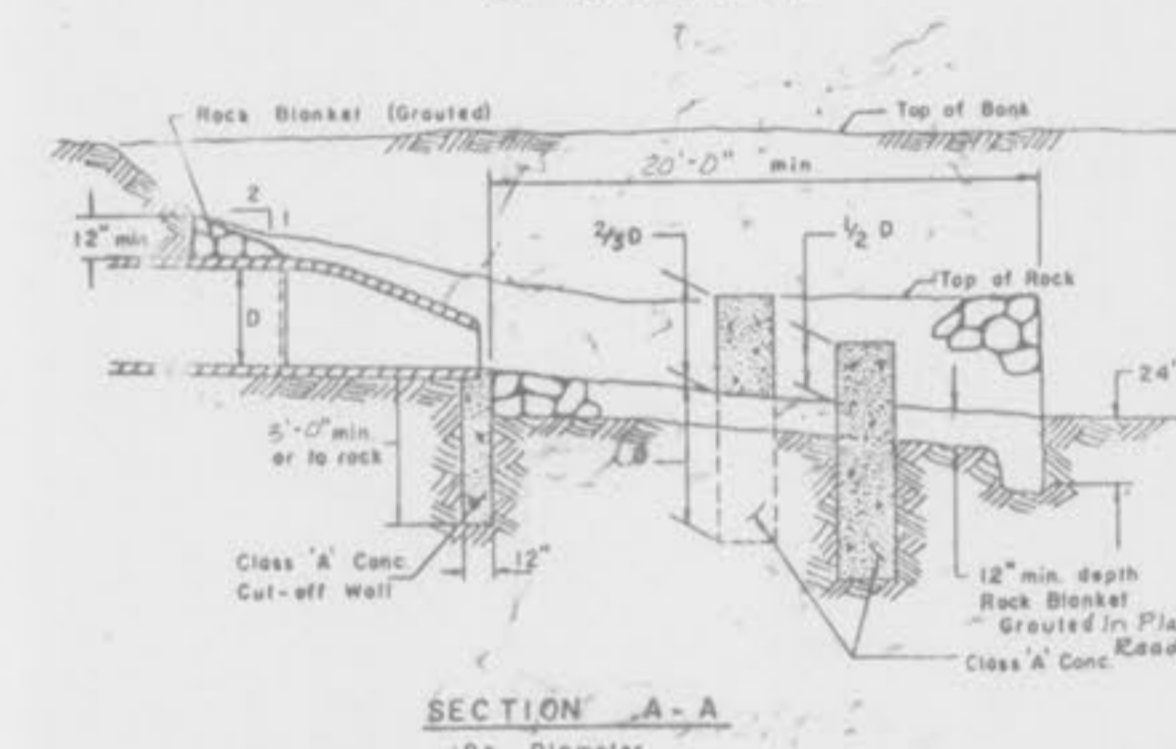
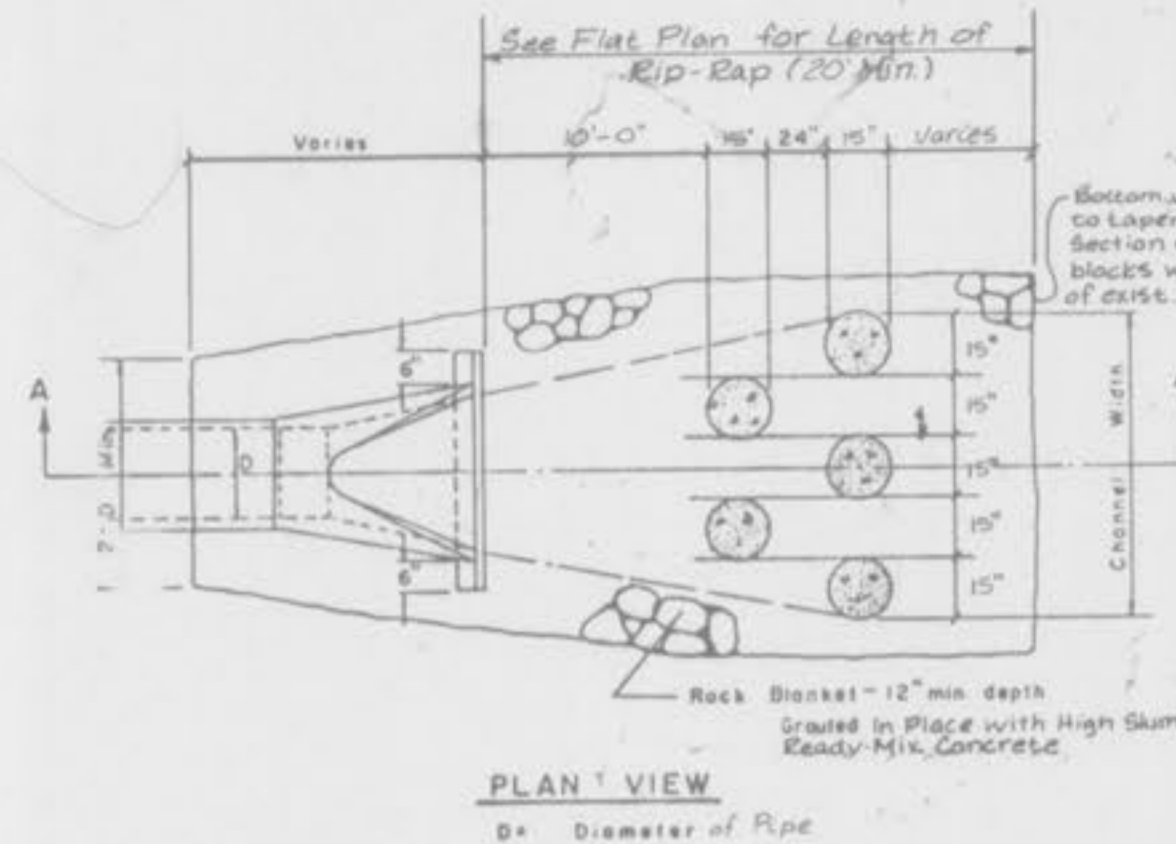


GENERAL NOTES:
1. Do not scale drawing. Follow dimensions.
2. Sections are symmetrical about construction centerline.
3. For longitudinal and transverse joints, detail and bar requirements and curb dimensions refer to the Pavement Construction Details for Streets and Curbs, Standard Drawing CS02.03.
4. All necessary pavement markings by St. Charles County.
5. Surface shown may not apply at intersections.
6. For details on an existing structure in a ditch refer to the Sewer Construction Details for Grate and Inlet Boxes, Standard Drawing CS04.33.
7. Sidewalk width increases to 5' thru Private Driveway and 7' thru Commercial Driveway. See Entrance Construction Details.
8. Easement when required shall be established as follows:
a) Residential: Utility, Sewer and Sidewalk Easement and dedicated to St. Charles County.
b) Commercial: Utility, Sewer and Sidewalk Easement and dedicated to St. Charles County.

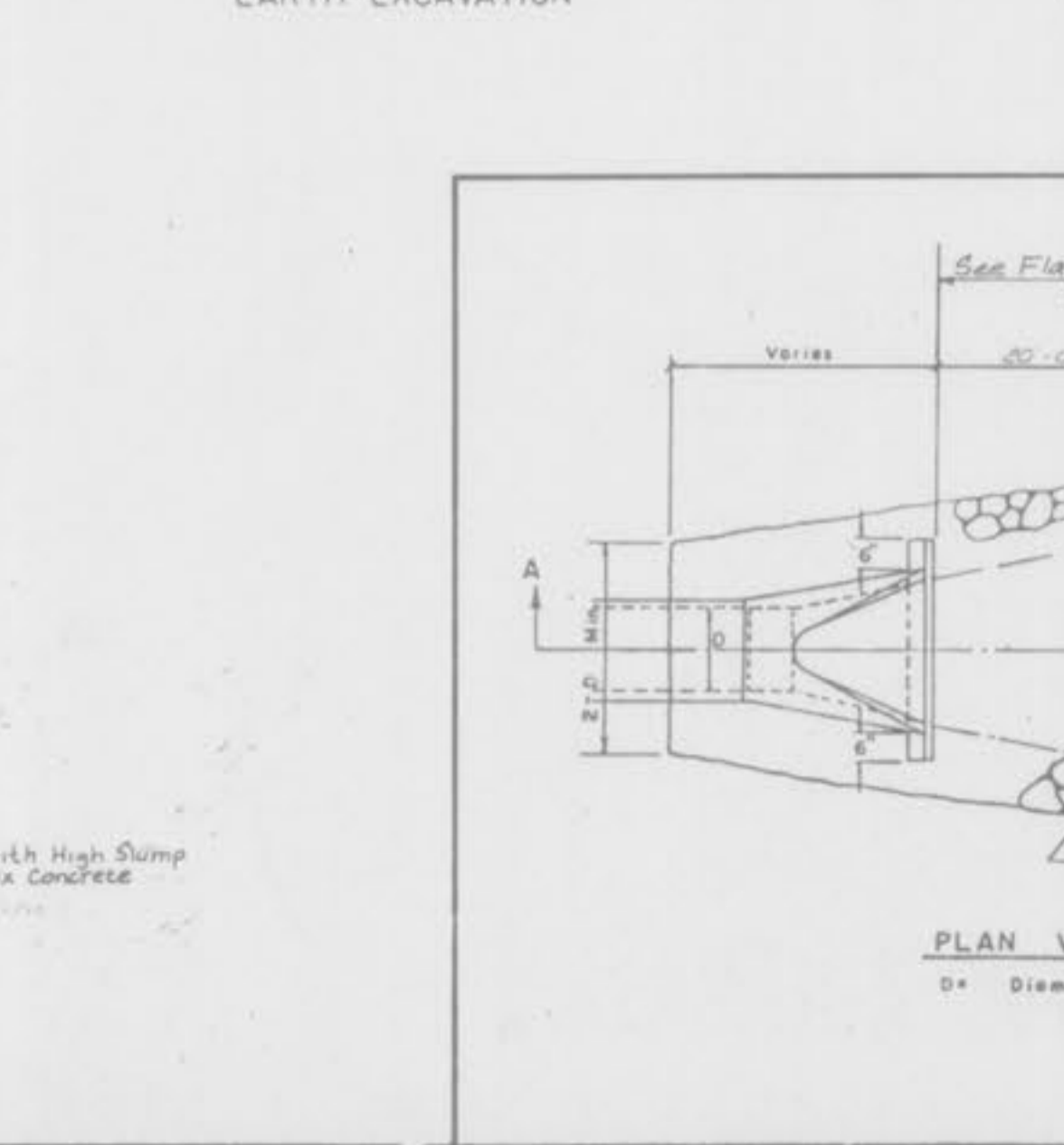
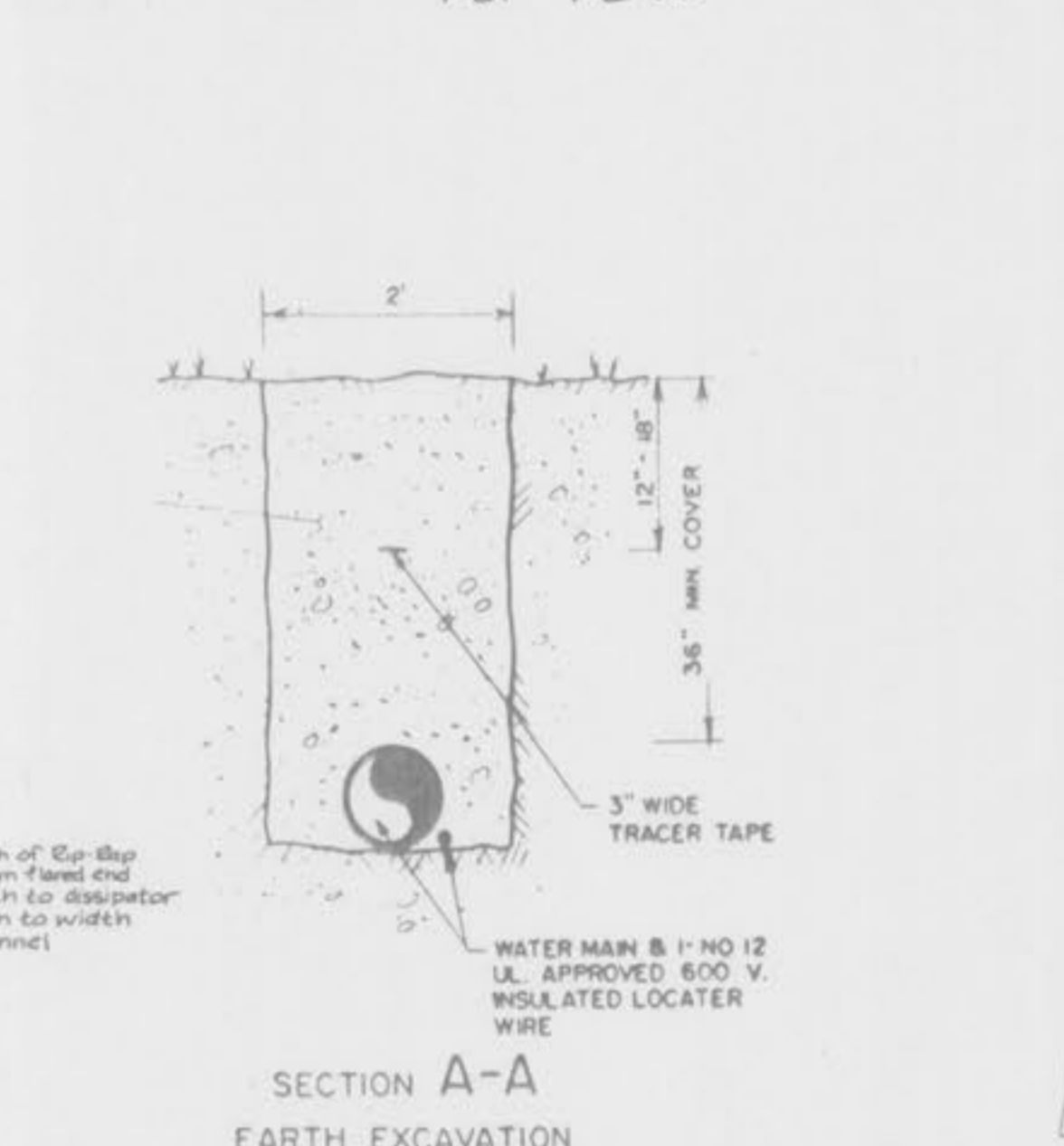


GENERAL NOTES:
1. Do not scale drawing. Follow dimensions.
2. For longitudinal and transverse joints, detail and bar requirements and curb dimensions refer to the Pavement Construction Details for Streets and Curbs, Standard Drawing CS02.03.
3. Placement Lugs shall be required on all street grades of 5% or greater.
4. Placement Lugs shall be located at or near the point at which the street grade first exceeds 5% and then proceed uphill at the following spacing: 200' intervals on longest sections, 100' intervals on horizontal curve sections, or as otherwise directed by the Department.
5. Placement Lugs shown are for a 25' and pavement when reported on pavement narrower or wider than 25', details are similar.

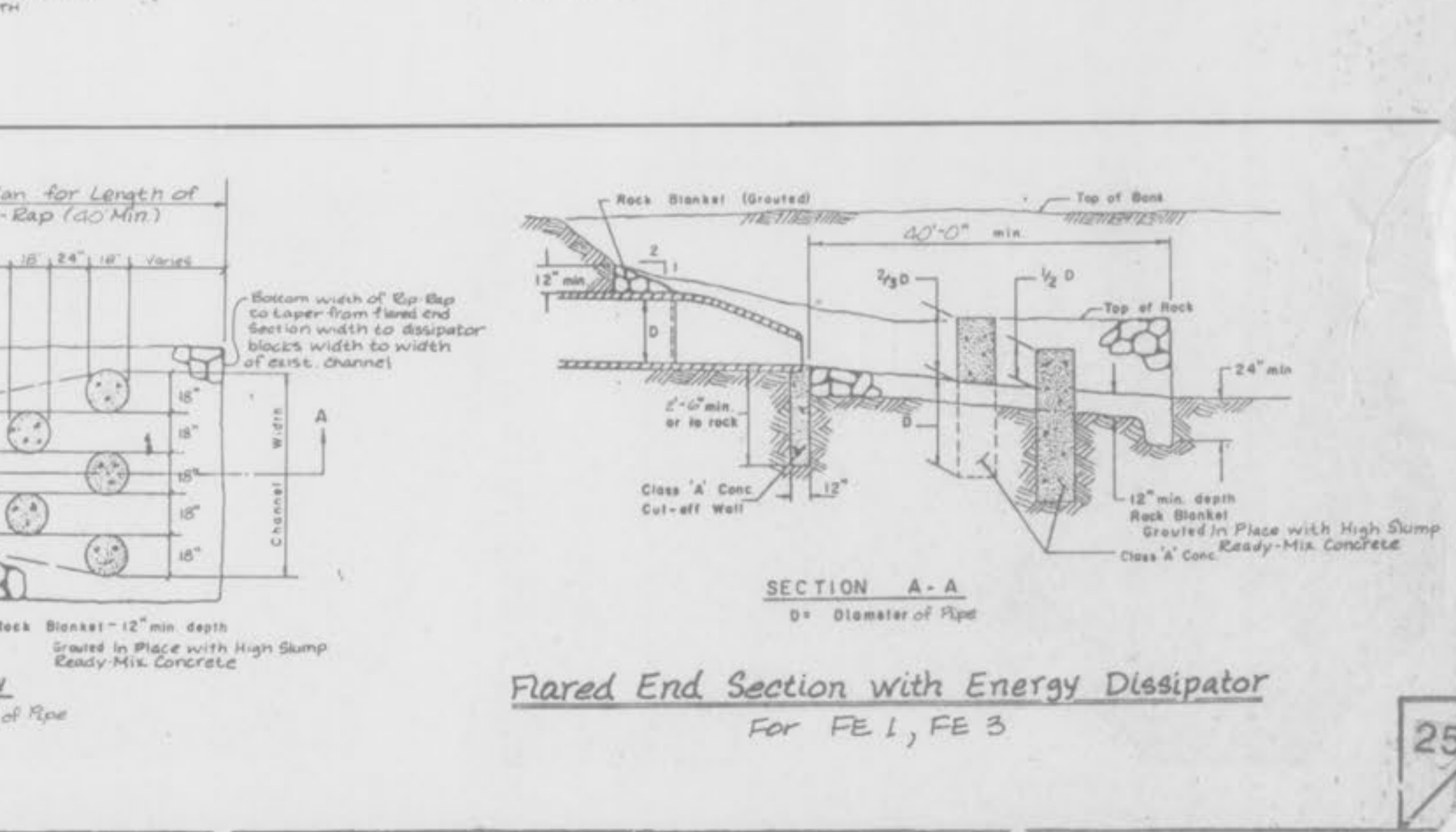
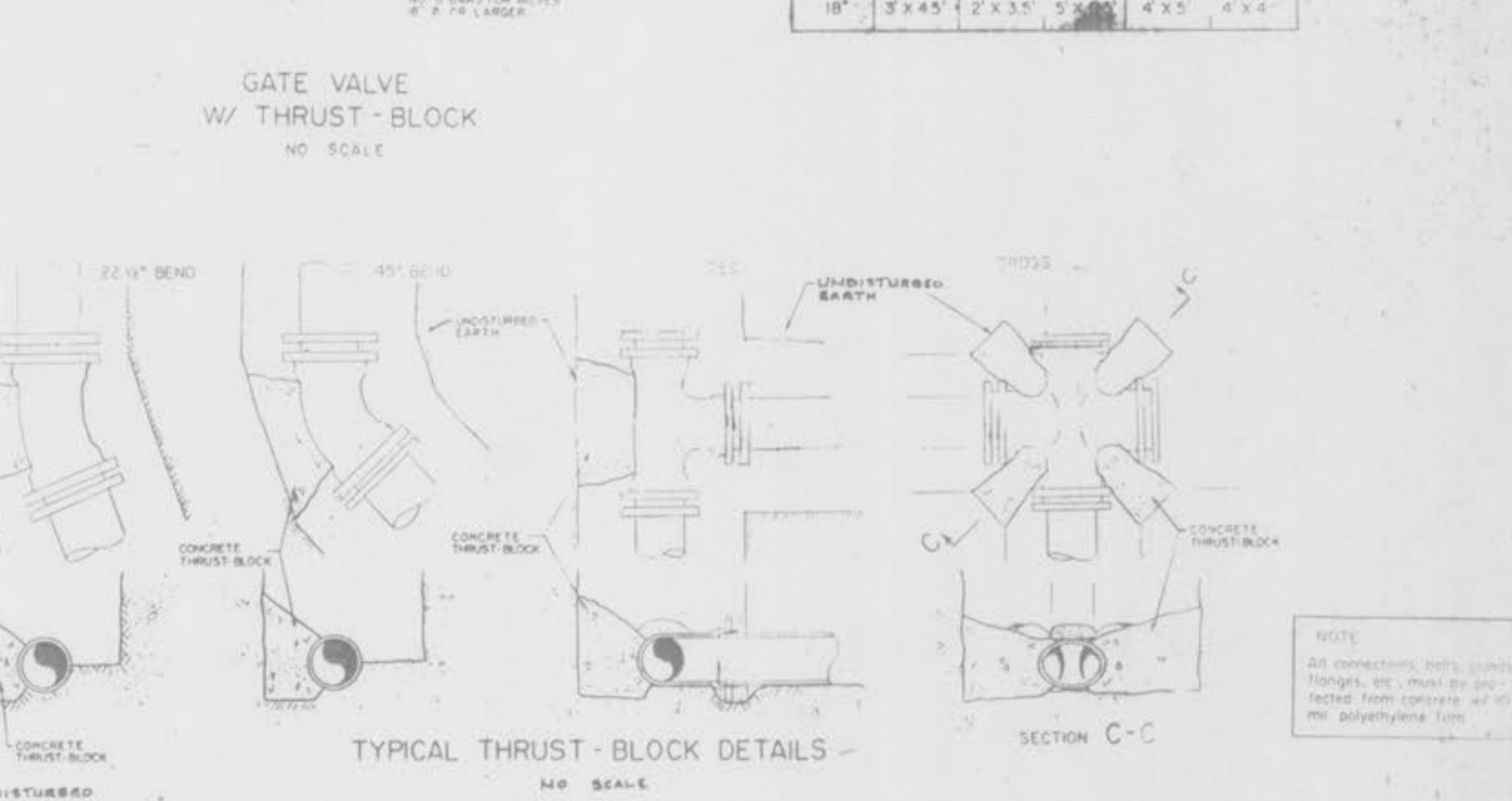
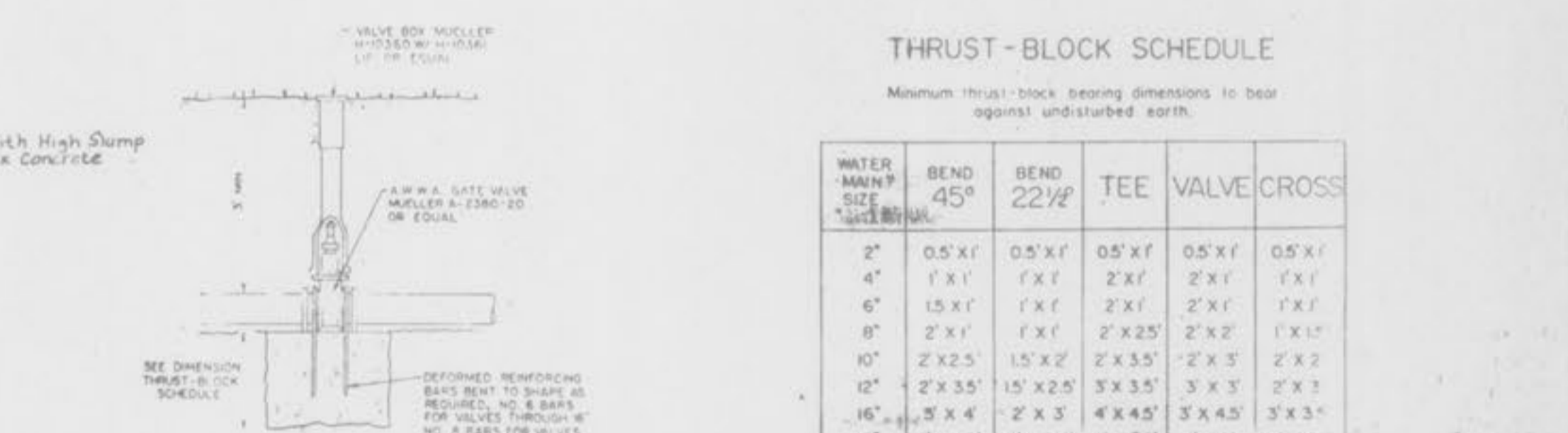
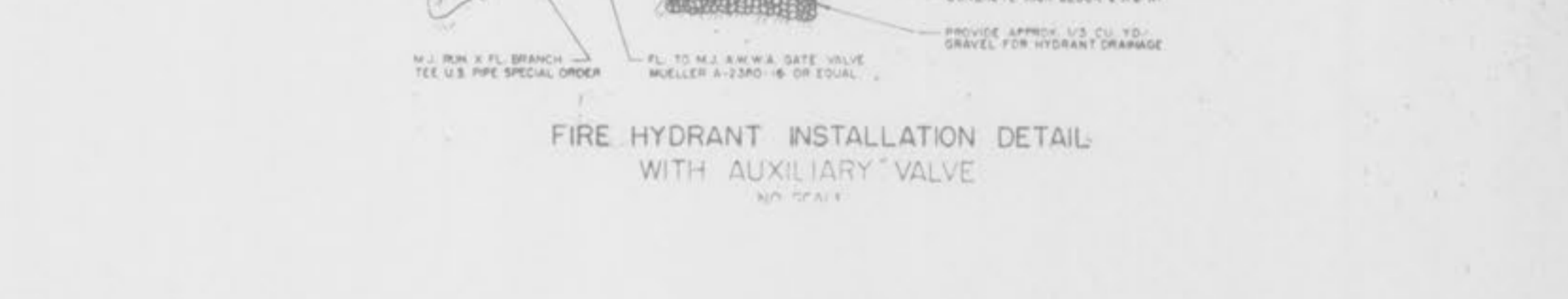
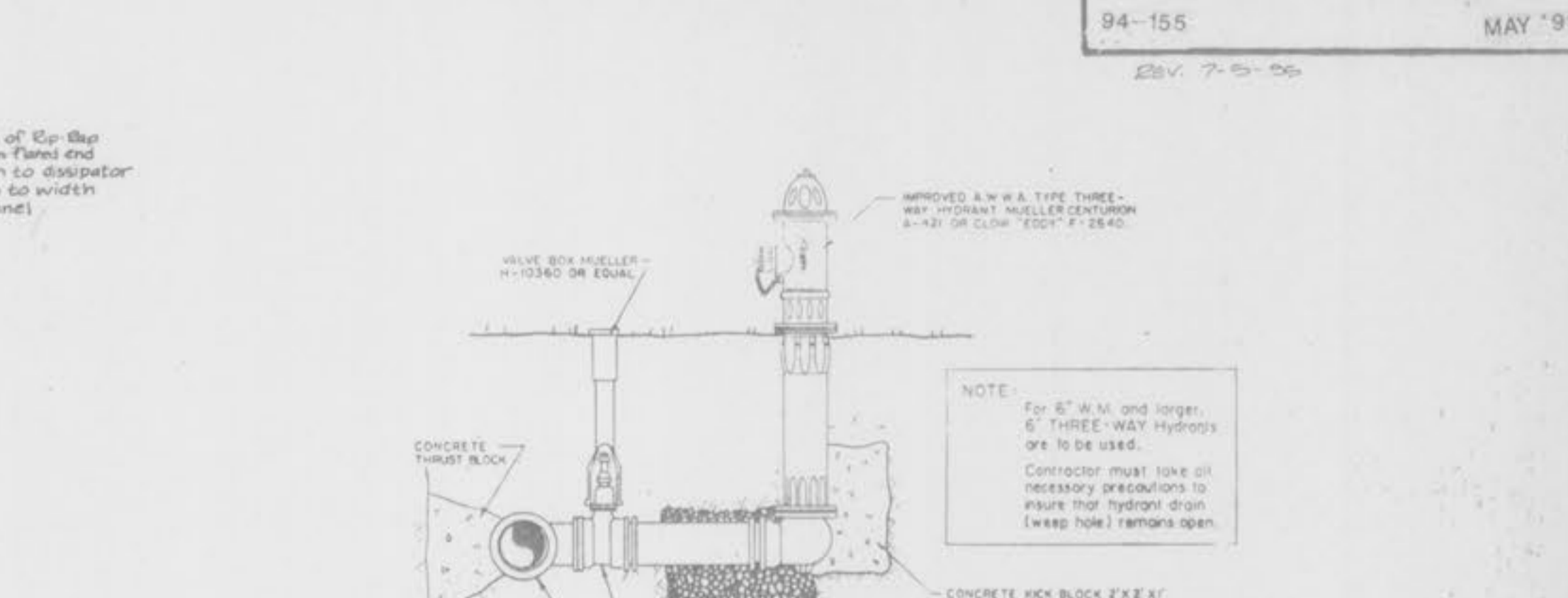
BAR BEND DETAIL:
ST. LOUIS COUNTY
DEPARTMENT OF HIGHWAYS AND TRAFFIC
CLAYTON, MISSOURI
PAVEMENT CONSTRUCTION DETAILS
PAVEMENT LUG
APPROVED: [Signature]
DATE: 06/11/96
DRAWING: CS02.04



Flared End Section with Energy Dissipator
For FE 18



Flared End Section with Energy Dissipator
For FE 30, FE 72



Flared End Section with Energy Dissipator
For FE 1, FE 3