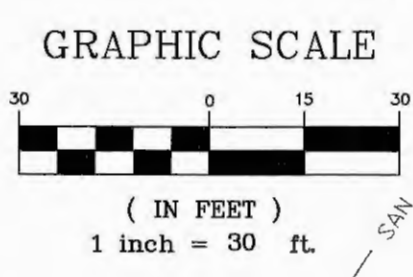
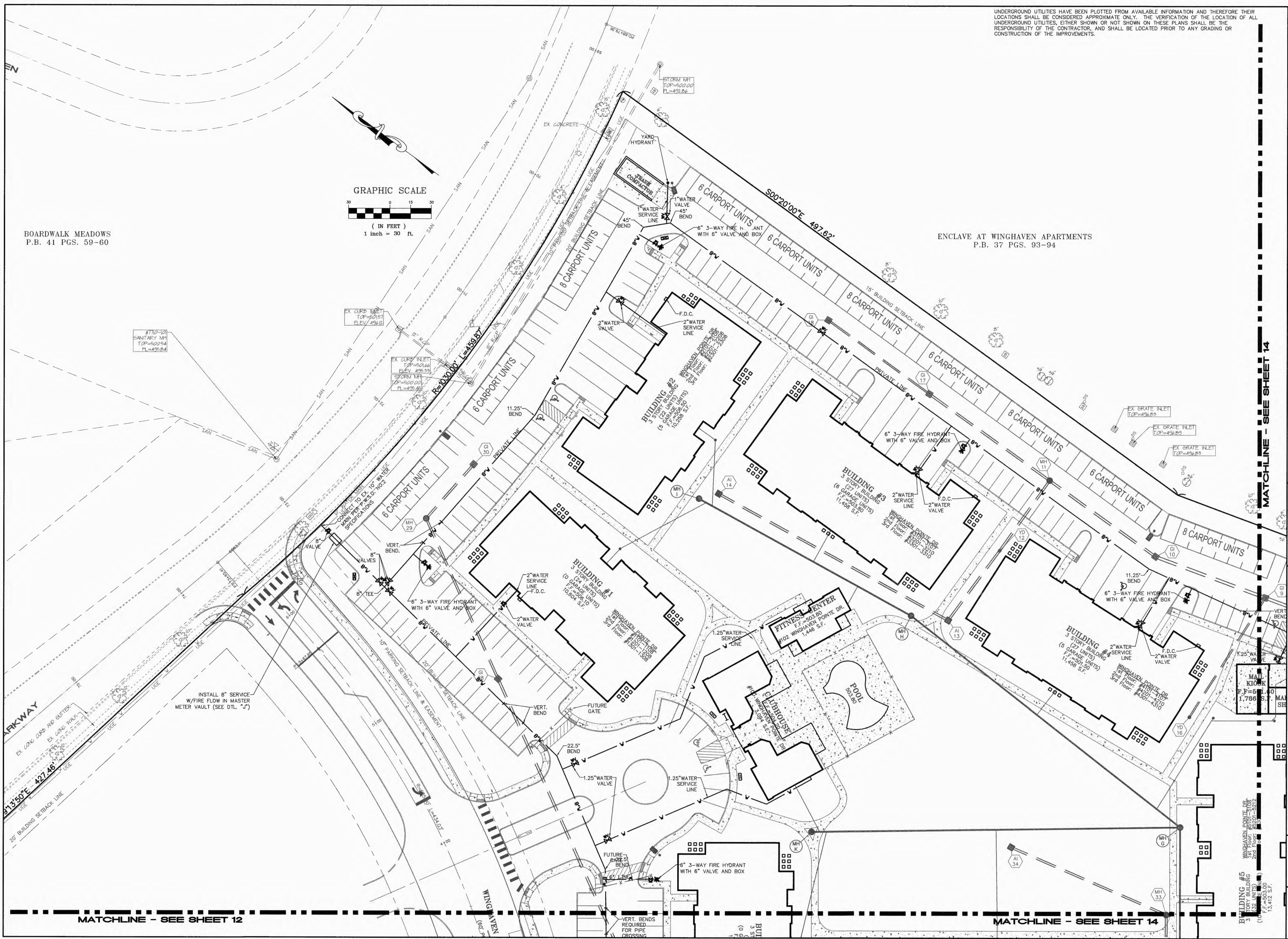


UNDERGROUND UTILITIES HAVE BEEN PLOTTED FROM AVAILABLE INFORMATION AND THEREFORE THEIR LOCATIONS SHALL BE CONSIDERED APPROXIMATE ONLY. THE VERIFICATION OF THE LOCATION OF ALL UNDERGROUND UTILITIES, EITHER SHOWN OR NOT SHOWN ON THESE PLANS SHALL BE THE RESPONSIBILITY OF THE CONTRACTOR, AND SHALL BE LOCATED PRIOR TO ANY GRADING OR CONSTRUCTION OF THE IMPROVEMENTS.



BOARDWALK MEADOWS
P.B. 41 PGS. 59-60

ENCLAVE AT WINGHAVEN APARTMENTS
P.B. 37 PGS. 93-94

MATCHLINE - SEE SHEET 14

MATCHLINE - SEE SHEET 12

MATCHLINE - SEE SHEET 14

PROJECT TITLE:
ALTAIR AT THE PRESERVE
(FKA WINGHAVEN POINTE)

ENGINEERING
PLANNING
SURVEYING
221 Point West Blvd.
St. Charles, MO 63301
636-928-5562
FAX 636-928-1718



DISCLAIMER OF RESPONSIBILITY
I hereby specify that the documents intended to be authorized by my seal are limited to the sheet, and I hereby disclaim any responsibility for all other drawings, specifications, estimates, reports or other documents or instruments relating to or intended to be used for any part or parts of the architectural or engineering project or projects.



CLIFFORD L. HEITMANN
CIVIL ENGINEER
E29817
Copyright 2016
Box Engineering Company, Inc.
Authority No. 000655
All Rights Reserved

REVISIONS

DATE	BY	REVISION
04/25/2016	DCS & PWS2	COMMENTS
05/16/2016	QTY REVIEW	QTY REVIEW
06/15/2016	CITY REVIEW & DCS	COMMENTS
07/29/2016	CITY REVIEW	QTY REVIEW
08/04/2016	MODOT REVIEW	MODOT REVIEW
08/29/2017	MODOT REVIEW	MODOT REVIEW

Developer / Owner:
ROLWES DEVELOPMENT, L.L.C.
13100 MANCHESTER ROAD, SUITE 65
ST. LOUIS, MISSOURI 63131
314-821-9600

WATER PLAN

P+Z No. #9831.65.02
City No. #
Page No. 13 of 38

Box Project # 14-16403 Issue Date: 03/18/2016