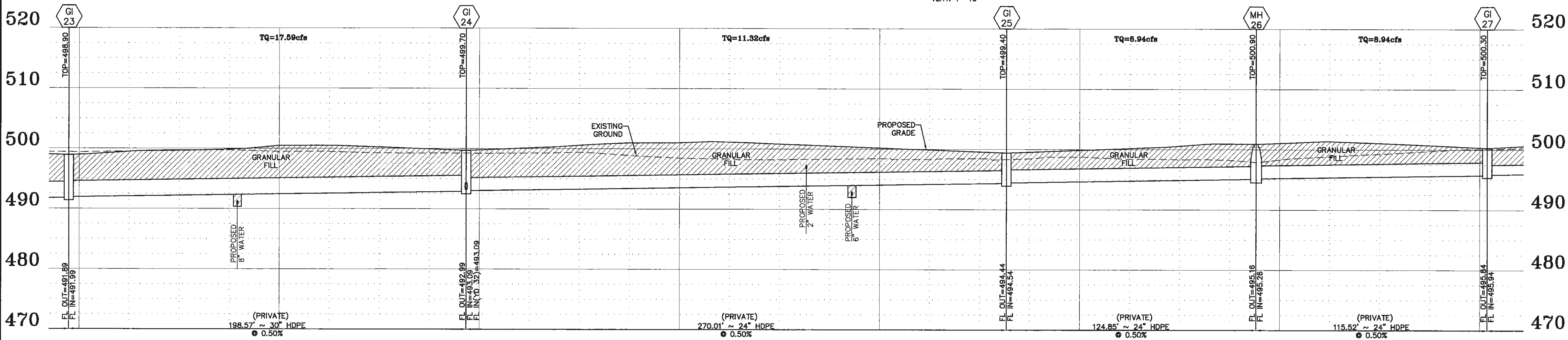


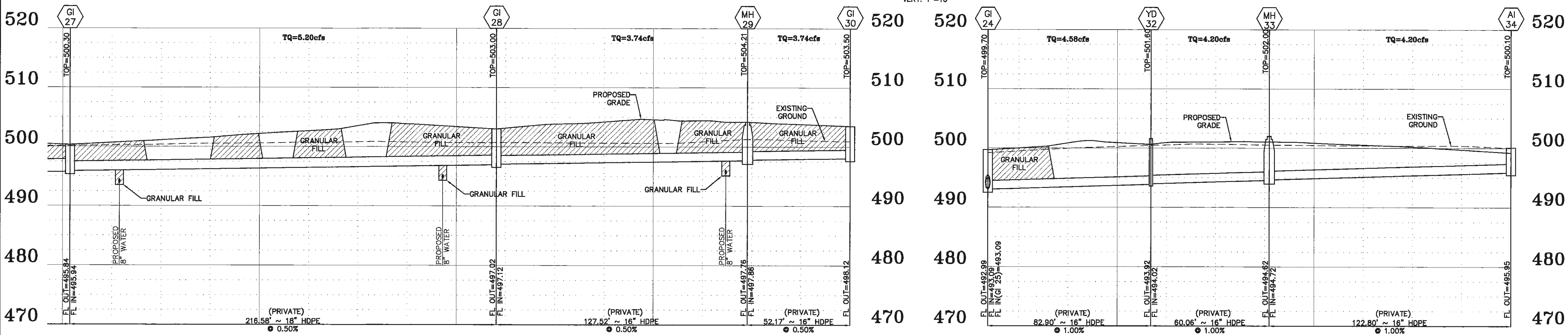
STORM SEWER PROFILES

SCALES:
HORIZ. 1"=30'
VERT. 1"=10'



STORM SEWER PROFILES

SCALES:
HORIZ. 1"=30'
VERT. 1"=10'



STORM SEWER PROFILES

SCALES:
HORIZ. 1"=30'
VERT. 1"=10'

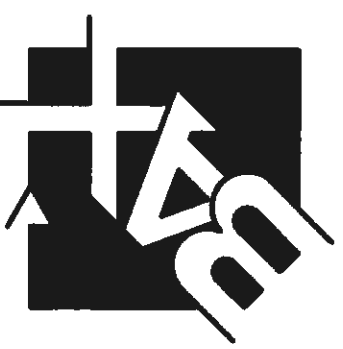
STORM SEWER PROFILES

SCALES:
HORIZ. 1"=30'
VERT. 1"=10'

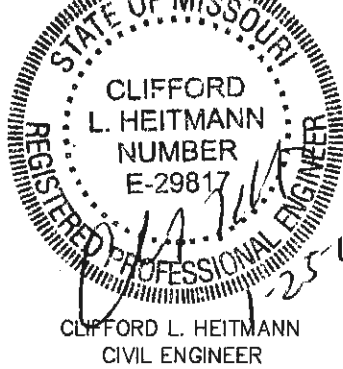
NOTE: ALL STORM INLETS TO HAVE FILTREXX FILTER OR EQUAL. SEE DETAIL ON SHEET 38.

PROJECT TITLE:
**ALTAIR AT THE PRESERVE
(FKA WINGHAVEN POINTE)**

ENGINEERING
PLANNING
SURVEYING
221 Point West Blvd.
St. Charles, MO 63301
636-928-5562
FAX 636-928-1718



DISCLAIMER OF RESPONSIBILITY
I hereby specify that the documents intended to be authorized by my seal are limited to this sheet, and I hereby disclaim any responsibility for all other drawings, specifications, estimates, reports or other documents or instruments relating to or intended to be used for any part or parts of the architectural or engineering project or projects.



CLIFFORD L. HEITMANN
CIVIL ENGINEER
E29817
Copyright 2016
Box Engineering Company, Inc.
Authority No. 000655
All Rights Reserved

REVISIONS

04/25/2016	DCSD & PWSD2 COMMENTS
05/16/2016	CITY REVIEW
06/15/2016	CITY REVIEW & DCSD COMMENTS
07/29/2016	CITY REVIEW
08/04/2016	MODOT REVIEW
11/04/2016	PH.1 GRADE REVISIONS
06/29/2017	MODOT REVIEW

Developer / Owner:
ROLWES DEVELOPMENT, L.L.C.
13100 MANCHESTER ROAD, SUITE 65
ST. LOUIS, MISSOURI 63131
314-821-9600

STORM SEWER PROFILES

P+Z No. #9831.65.02
City No. #

Page No. 23 of 38

Box Project #14-16403 Issue Date: 03/16/2016