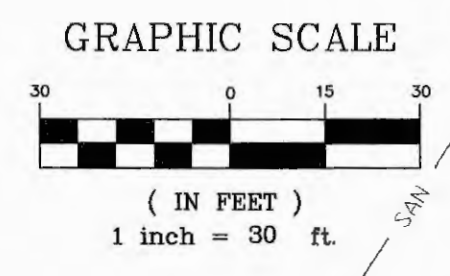
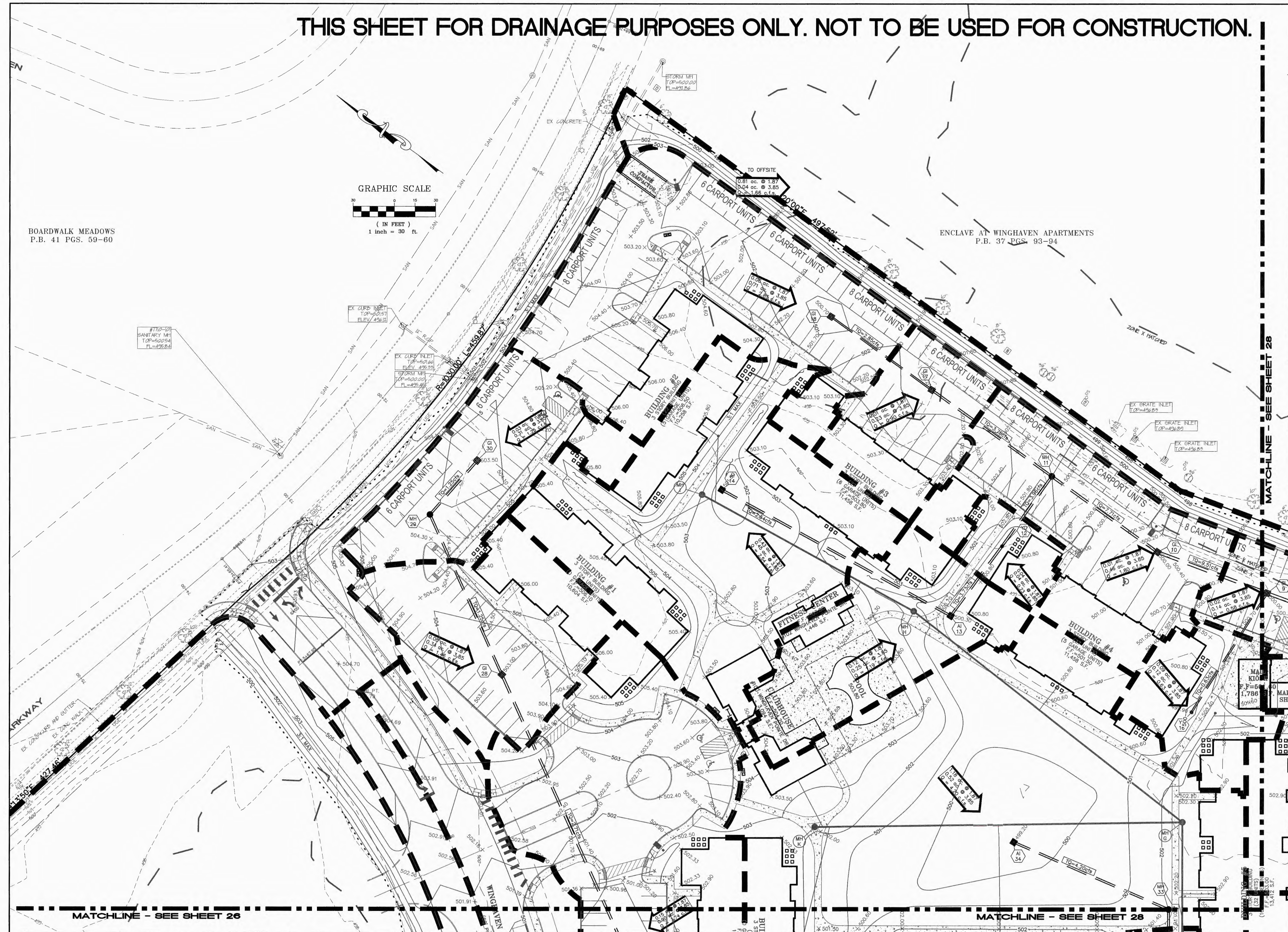


THIS SHEET FOR DRAINAGE PURPOSES ONLY. NOT TO BE USED FOR CONSTRUCTION.

BOARDWALK MEADOWS
P.B. 41 PGS. 59-60



ENCLAVE AT WINGHAVEN APARTMENTS
P.B. 37 PGS. 93-94



PROJECT TITLE:
**ALTAIR AT THE PRESERVE
(FKA WINGHAVEN POINTE)**

ENGINEERING
PLANNING
SURVEYING
221 Point West Blvd.
St. Charles, MO 63301
636-928-5533
FAX 636-1718



DISCLAIMER OF RESPONSIBILITY
I hereby specify that the documents intended to be authorized by my seal are limited to this sheet, and I hereby disclaim any responsibility for all other drawings, specifications, estimates, reports or other documents or instruments relating to or intended to be used for any part or parts of the architectural or engineering project or survey.



Copyright 2016
Box Engineering Company, Inc.
Authority No. 000655
All Rights Reserved.

REVISIONS

DATE	BY	REVISION
04/25/2016	DCSD	DCSD COMMENTS
05/16/2016	CITY	CITY REVIEW
06/15/2016	CITY	CITY REVIEW & DCSD COMMENTS
07/29/2016	CITY	CITY REVIEW
08/04/2016	MODOT	MODOT REVIEW
11/04/2016	PER CLIENT	PH.T GRADING REVISION PER CLIENT
06/29/2017	MODOT	MODOT REVIEW

Developer / Owner:
ROLWES DEVELOPMENT, L.L.C.
13100 MANCHESTER ROAD, SUITE 65
ST. LOUIS, MISSOURI 63131
314-821-9600

P+Z No. #9831.65.02
City No. #
Page No. 27 of 38

POST-DEVELOPED DRAINAGE AREA MAP

MATCHLINE - SEE SHEET 28

MATCHLINE - SEE SHEET 26

MATCHLINE - SEE SHEET 28

Box Project # 14-16403 Issue Date: 03/18/2016