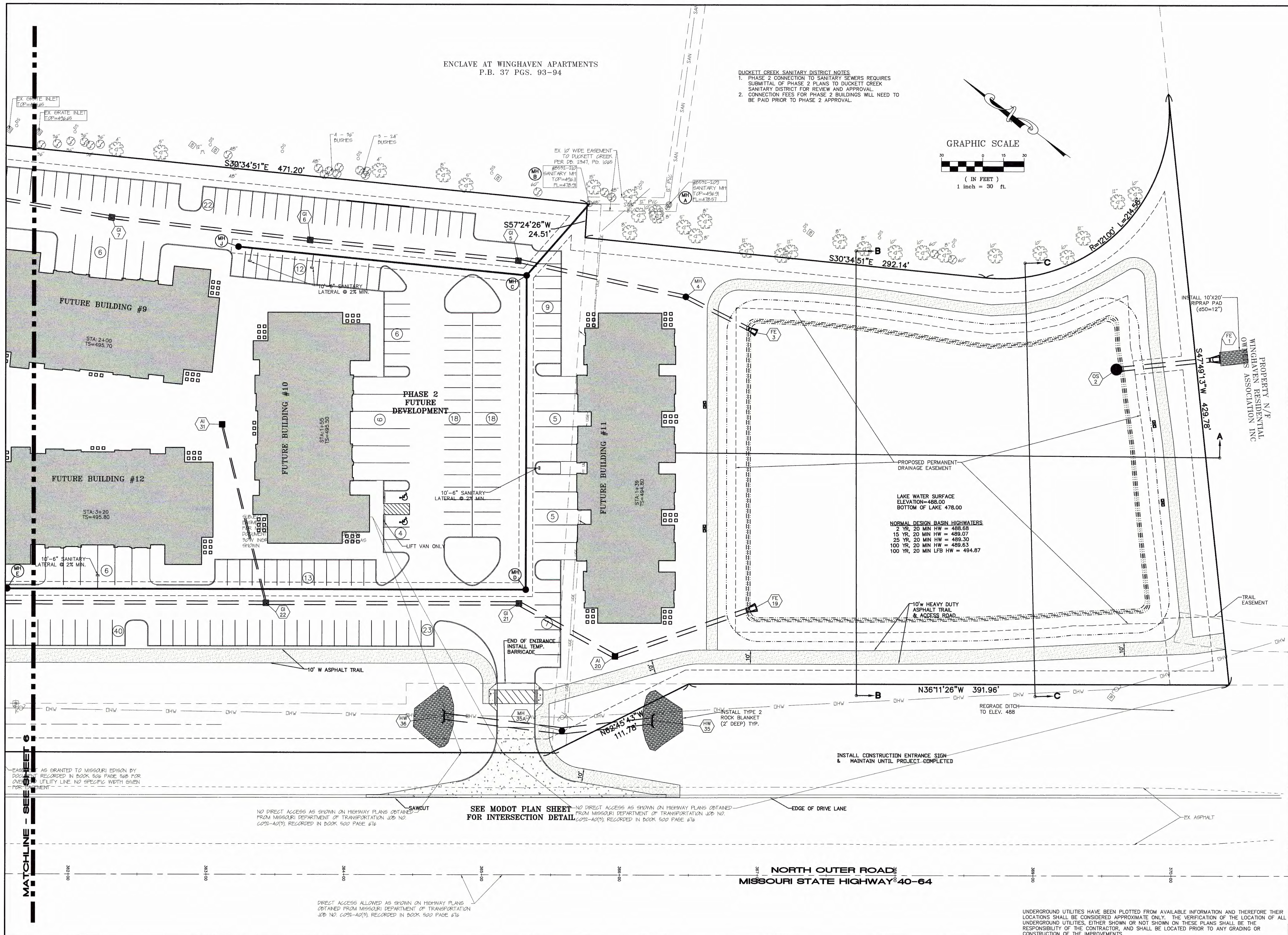


ENCLAVE AT WINGHAVEN APARTMENTS
P.B. 37 PGS. 93-94

DUCKETT CREEK SANITARY DISTRICT NOTES
1. PHASE 2 CONNECTION TO SANITARY SEWERS REQUIRES SUBMITTAL OF PHASE 2 PLANS TO DUCKETT CREEK SANITARY DISTRICT FOR REVIEW AND APPROVAL.
2. CONNECTION FEES FOR PHASE 2 BUILDINGS WILL NEED TO BE PAID PRIOR TO PHASE 2 APPROVAL.

GRAPHIC SCALE

(IN FEET)
1 inch = 30 ft.



LAKE WATER SURFACE
ELEVATION=488.00
BOTTOM OF LAKE=478.00

NORMAL DESIGN BASIN HIGHWATERS
2 YR, 20 MIN HW = 488.58
15 YR, 20 MIN HW = 489.07
25 YR, 20 MIN HW = 489.30
100 YR, 20 MIN HW = 489.63
100 YR, 20 MIN LFB HW = 494.87

PROJECT TITLE:
**ALTAIR AT THE PRESERVE
(FKA WINGHAVEN POINTE)**

ENGINEERING
PLANNING
SURVEYING
221 Point West Blvd.
St. Charles, MO 63301
636-928-5562
FAX 636-928-1716



DISCLAIMER OF RESPONSIBILITY
I hereby specify that the documents intended to be authorized by my seal are limited to the sheet, and I hereby disclaim any responsibility for all other drawings, specifications, estimates, reports or other documents or instruments relating to or intended to be used for any part or parts of the architectural or engineering project of which this is a part.



CLIFFORD L. HEITMANN
CIVIL ENGINEER
E29817
Copyright 2016
Box Engineering Company, Inc.
Authority No. 000655
All Rights Reserved

REVISIONS

DATE	BY	REVISION
04/25/2016	DCSD & PWS02	COMMENTS
05/16/2016	CITY	REVIEW
06/15/2016	CITY REVIEW & DCSD	COMMENTS
07/29/2016	CITY	REVIEW
08/04/2016	MODOT	REVIEW
08/29/2017	MODOT	REVIEW
08/29/2017	MODOT	REVIEW
01/18/2018	CARPOT	REVISIONS

Developer / Owner:
ROLWES DEVELOPMENT, L.L.C.
13100 MANCHESTER ROAD, SUITE 65
ST. LOUIS, MISSOURI 63131
314-821-9600

SITE PLAN

P+Z No.
#9831.65.02

City No.
#

Page No.
7 of 38

UNDERGROUND UTILITIES HAVE BEEN PLOTTED FROM AVAILABLE INFORMATION AND THEREFORE THEIR LOCATIONS SHALL BE CONSIDERED APPROXIMATE ONLY. THE VERIFICATION OF THE LOCATION OF ALL UNDERGROUND UTILITIES, EITHER SHOWN OR NOT SHOWN ON THESE PLANS SHALL BE THE RESPONSIBILITY OF THE CONTRACTOR, AND SHALL BE LOCATED PRIOR TO ANY GRADING OR CONSTRUCTION OF THE IMPROVEMENTS.

MATCHLINE - SEE SHEET 6

NO DIRECT ACCESS AS SHOWN ON HIGHWAY PLANS OBTAINED FROM MISSOURI DEPARTMENT OF TRANSPORTATION JOB NO. 6092-40(9), RECORDED IN BOOK 500 PAGE 616

NO DIRECT ACCESS AS SHOWN ON HIGHWAY PLANS OBTAINED FROM MISSOURI DEPARTMENT OF TRANSPORTATION JOB NO. 6092-40(9), RECORDED IN BOOK 500 PAGE 616

NO DIRECT ACCESS AS SHOWN ON HIGHWAY PLANS OBTAINED FROM MISSOURI DEPARTMENT OF TRANSPORTATION JOB NO. 6092-40(9), RECORDED IN BOOK 500 PAGE 616

SEE MODOT PLAN SHEET FOR INTERSECTION DETAIL

NORTH OUTER ROAD
MISSOURI STATE HIGHWAY 40-64

Box Project #14-16403 Issue Date 03/16/2016