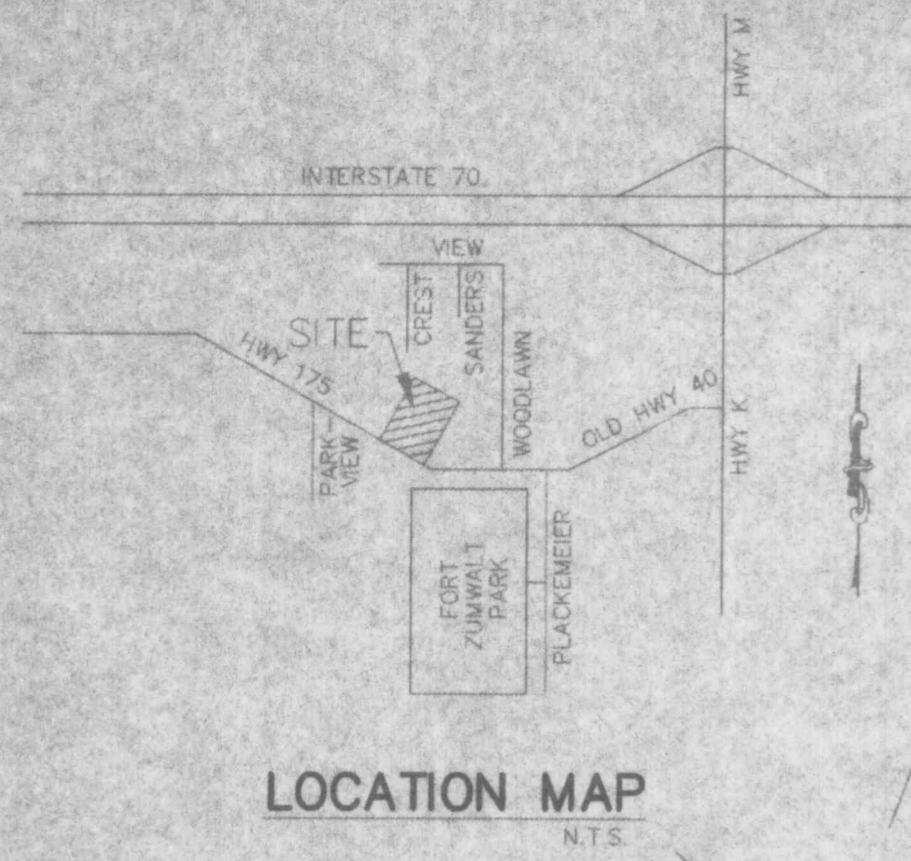
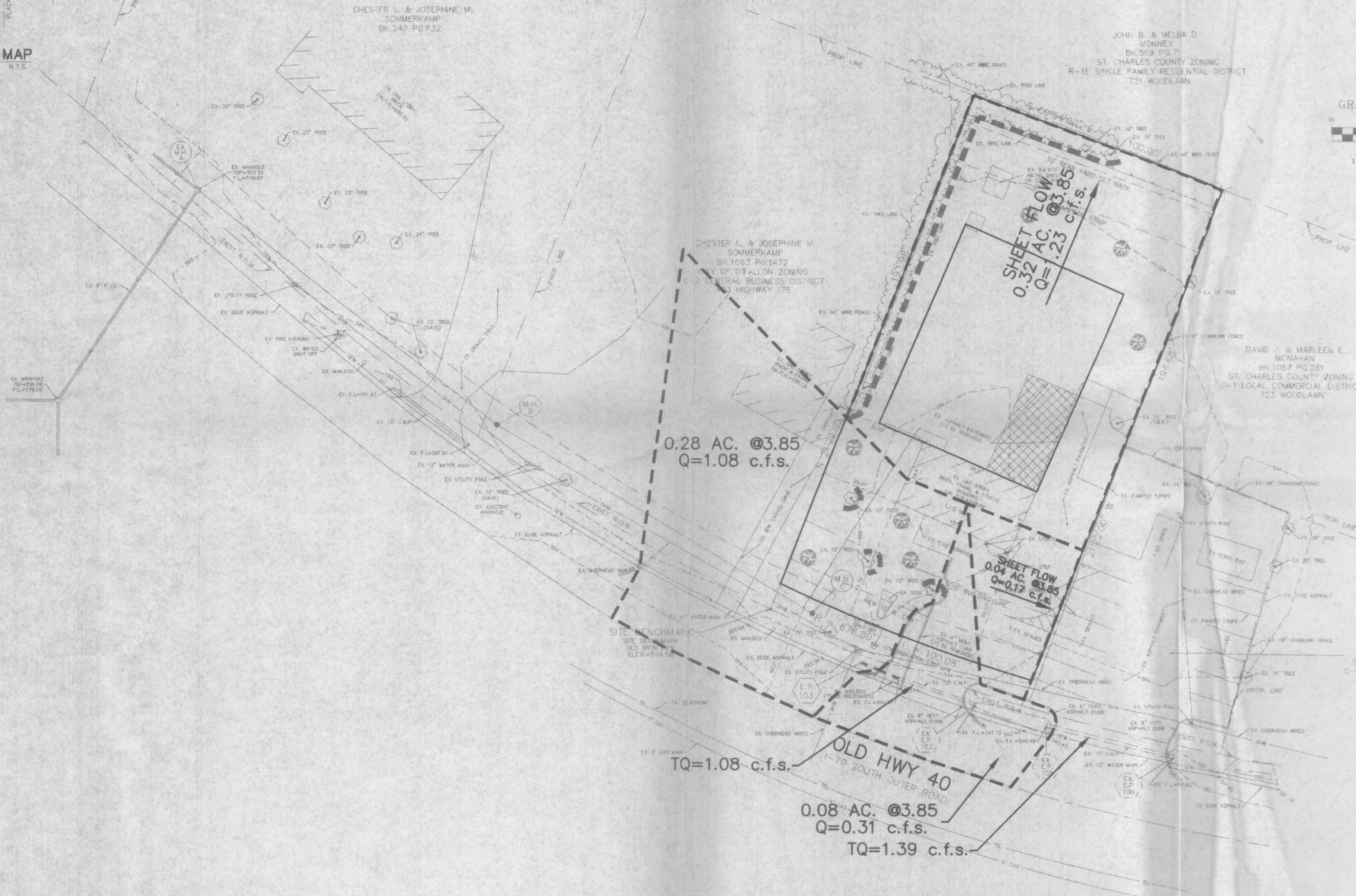


# A DRAINAGE AREA MAP FOR ALVEY'S SIGNS, INC.

A TRACT OF LAND BEING PART OF THE  
SOUTH HALF OF FRACTIONAL SECTION 29,  
TOWNSHIP 47 NORTH, RANGE 3 EAST  
OF THE FIFTH PRINCIPAL MERIDIAN,  
ST. CHARLES COUNTY, MISSOURI



LOCATION MAP  
N.T.S.



ALVEY'S SIGNS  
401 HIGHWAY 175  
O'FALLON, MISSOURI 63366  
(314) 978-4937

PREPARED FOR  
AND OWNED BY:

DAVID J. & MARLEEN E. MONAHAN  
BK 1057 PG 281  
ST. CHARLES COUNTY ZONING  
C-1 LOCAL COMMERCIAL DISTRICT  
723 WOODLAWN

ARTHUR C. & CATHERINE L. ORLANDO  
BK 1252 PG 1795  
ST. CHARLES COUNTY ZONING  
C-1 LOCAL COMMERCIAL DISTRICT  
399 HIGHWAY 175

REVISIONS

9-18-95	STATE
10-11-95	CITY OF O'FALLON

ENGINEERING  
PLANNING  
SURVEYING

1052 South Cloverleaf Drive  
St. Peters, MO. 63376-6445  
314-928-5552  
FAX 928-1718

AUGUST, 1995  
DATE  
95-7098  
PROJECT NUMBER  
2 OF 3  
SHEET OF  
7098.DWG  
FILE NAME  
DJB RLF  
DRAWN CHECKED

"THIS PLAN IS FOR DRAINAGE AREA PURPOSES ONLY, NOT TO BE USED AS CONSTRUCTION PLANS."