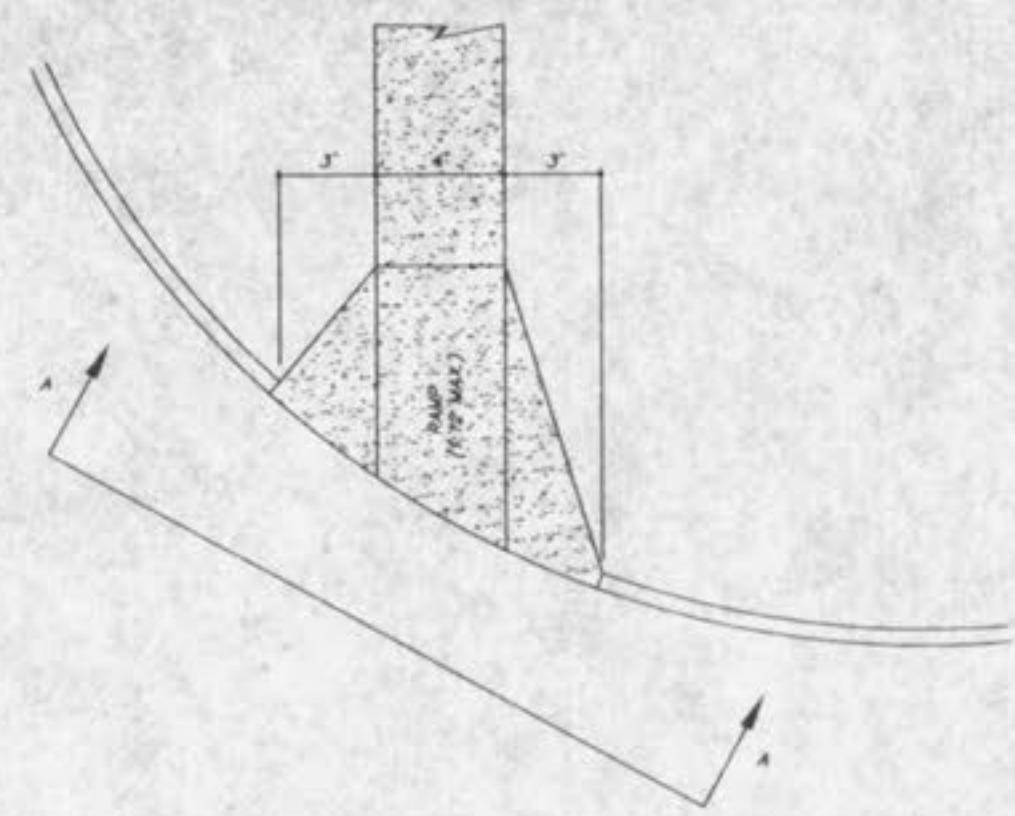


TYPE 3 CURB RAMP	
GRADE ALONG CURB (%)	MIN. LENGTH OF RAMP SLOPE (L.F.)
NEGATIVE (-) VALUES	3
0 TO 1.2	4
+1.0 TO +3	5
+3.0 TO +4	6
+4.0 TO +5	8
+5.0 TO +6	11
GREATER THAN +6	15

NOTE: Positive (+) "G" - Proceeding away from intersection and up a grade.
Negative (-) "G" - Proceeding away from intersection and down a grade.

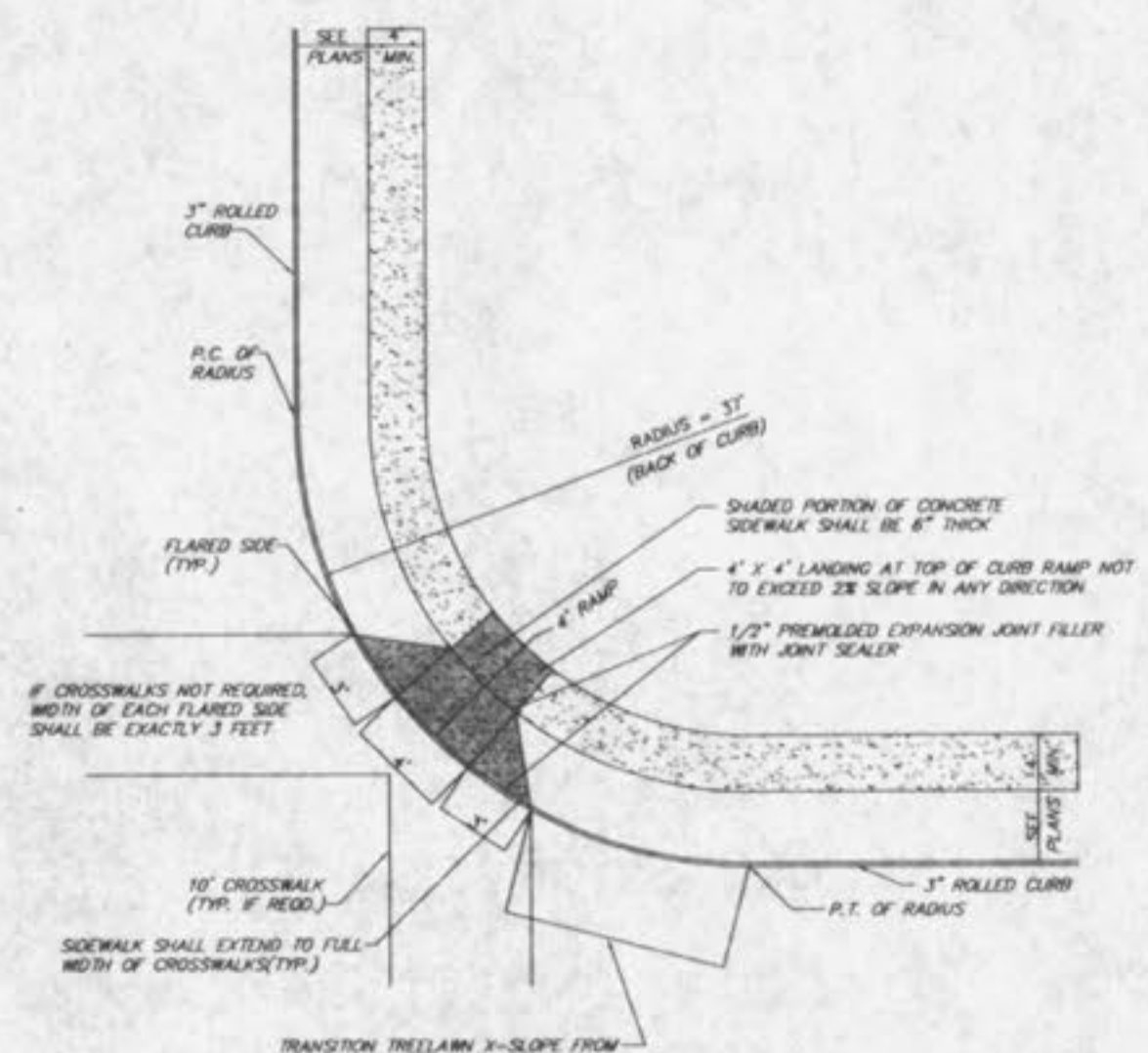
GENERAL NOTES

- Do not scale drawing. Follow dimensions.
- Sidewalks and sidewalk curb ramps shall be constructed in accordance with these details and the current approved "Americans with Disabilities Act Accessibility Guidelines" (A.D.A.A.G.).
- Provide a landing at the top of each straight ramp when Grade Along Curb ("G") is greater than +2% and less than +7%. For other values of "G", including all negative (-) values, no landing is required.
- Minimum sidewalk width along 3" rolled curb shall be 4 feet.
- Maximum sidewalk cross slope 0.02'/ft.
- All sidewalk sections shall be 4" thick, except where indicated otherwise by shaded portions shown in details. All sidewalk sections and curb ramps, regardless of thickness, shall be paid for as "Concrete Sidewalk".
- Where curb ramp meets pavement, bullnose will not be permitted.
- Construct a diagonal ramp when the maximum corner radius allowed for a straight ramp is exceeded.
- If integral concrete curb is constructed, strike a dummy joint across bottom of ramp at curb line. If concrete curb is doweled on, block out pavement to provide full depth curb across ramp from outer point of curb taper to outer point of curb taper.
- For sidewalk locations on cul-de-sacs, refer to "Pavement Construction Details".
- For pavement longitudinal and transverse joints and dowel and tie bar requirements and dimensions, refer to the Pavement Construction Details for "Joints and Curbs", Standard Drawing CS02.03.
- For roadway cross slopes, pavement types, and thicknesses, refer to "Standard Typical Section".
- The intersection of two sidewalks or the intersection of a sidewalk and a driveway may serve as a wheelchair passing spaces on sidewalks less than 5 feet wide.



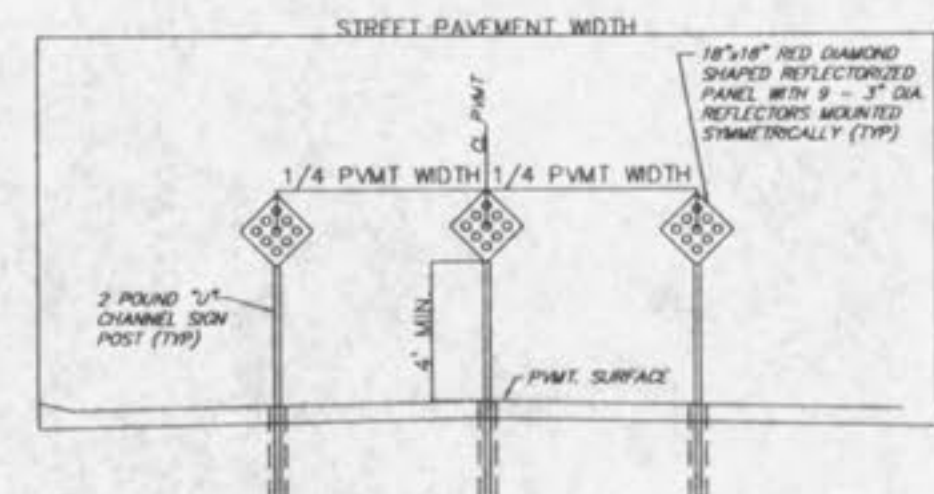
HANDICAPPED RAMP DETAIL

NOT TO SCALE



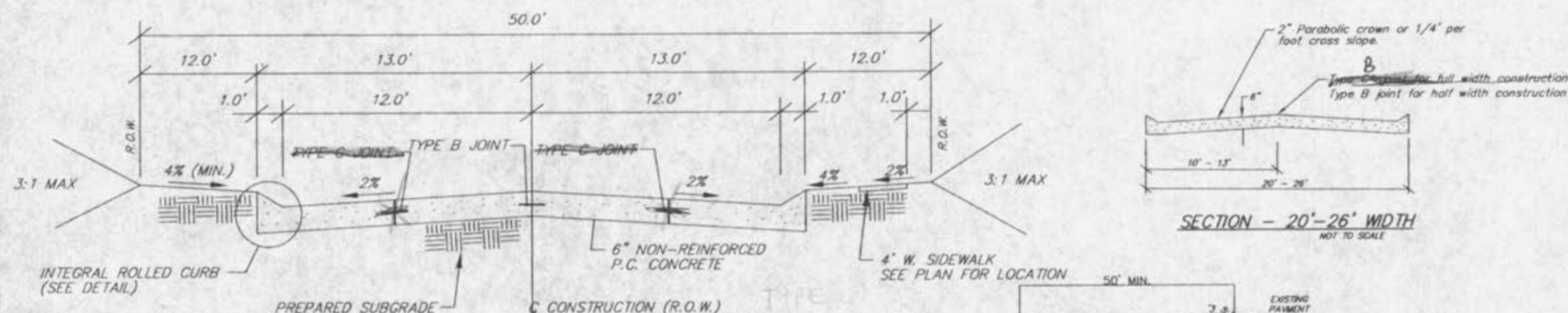
DIAGONAL CURB RAMP-3" ROLLED CURB (TYPE 9)

NOT TO SCALE



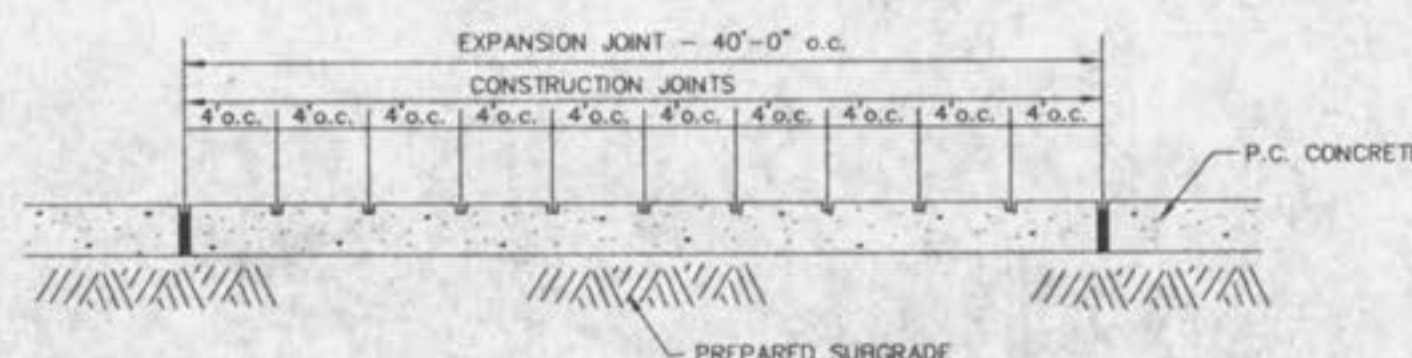
END OF PAVEMENT BARRICADE DETAIL

NOT TO SCALE



TYPICAL SECTION

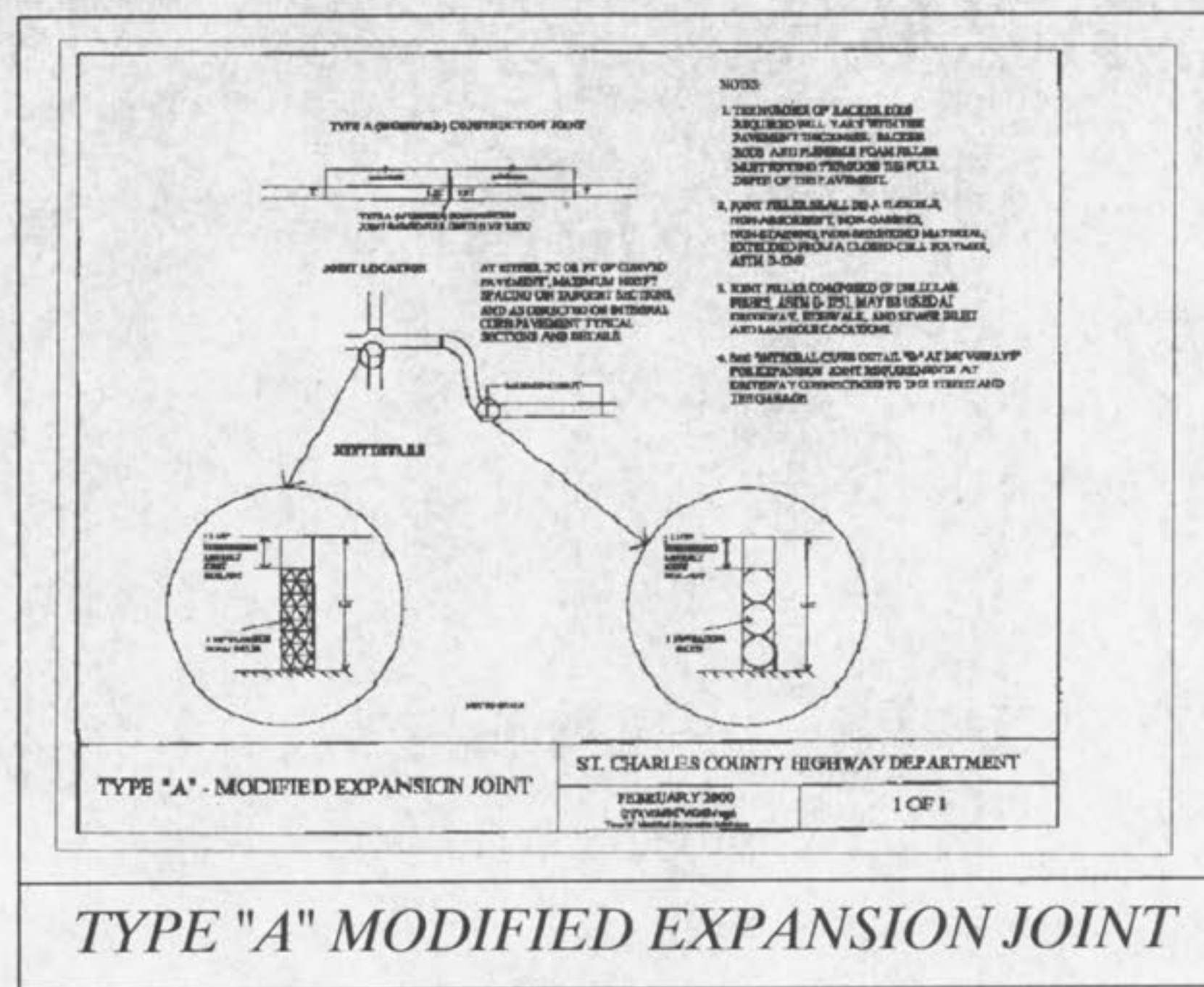
(26' W. P.C. CONC. PVMT.)
(NOT TO SCALE)



CONCRETE SIDEWALK DETAIL

NOT TO SCALE

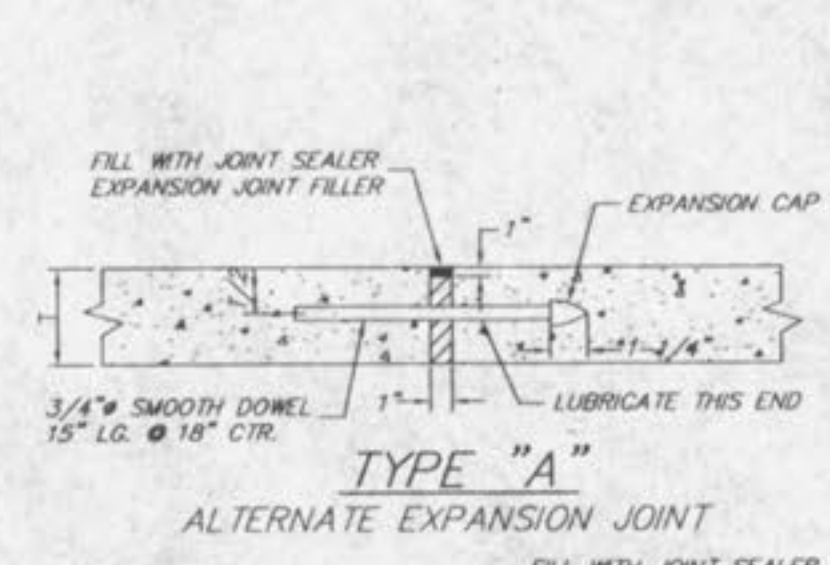
- Stone Size - Use 2" stone, or reclaimed or recycled concrete equivalent.
- Length - As required, but not less than 50 feet (except on a single residence lot where a 30 foot minimum length would apply).
- Thickness - Not less than six (6) inches.
- Width - Twenty (20) feet minimum, but not less than the full width of points where ingress or egress occurs.
- Filter Cloth - Will be placed over the entire area prior to placing of stone. Filter will not be required on a single family residence lot.
- Surface Water - All surface water flowing or directed toward construction entrances shall be piped across the entrance. If piping is impractical, a moundside berm with 5:1 slopes will be permitted.
- Maintenance - The entrance shall be maintained in a condition which will prevent blocking or flowing of sediment into public rights-of-way. This may require periodic top dressing with additional stone on conditions demand and repair and/or placement of any measures used to trap sediment. All sediment spilled, washed or tracked onto public rights-of-way must be removed immediately.
- Washing - Wheels shall be cleaned to remove sediment prior to entrance into public rights-of-way when washing is required. It shall be done on an area stabilized with stone and which drains into an approved sediment trapping device.
- Periodic inspection and needed maintenance shall be provided after each rain.



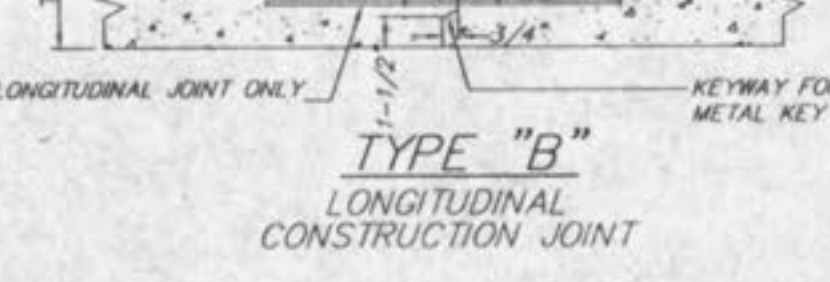
TYPE "A" MODIFIED EXPANSION JOINT

ST. CHARLES COUNTY HIGHWAY DEPARTMENT
FEBRUARY 2000
1 OF 1

SEE TYPE "A" MODIFIED EXPANSION JOINT DETAIL



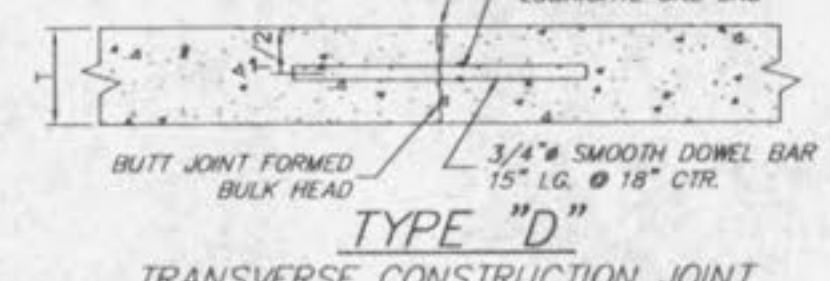
TYPE "A" ALTERNATE EXPANSION JOINT



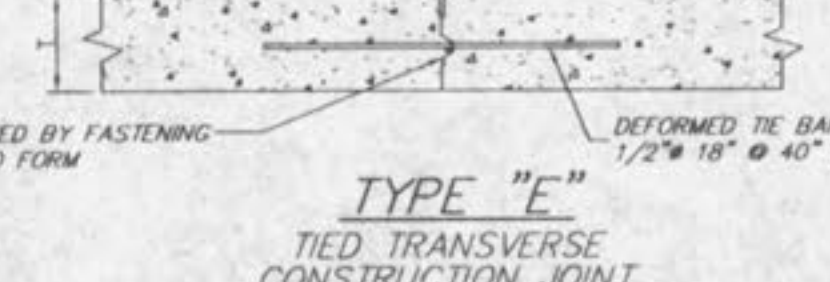
TYPE "B" LONGITUDINAL CONSTRUCTION JOINT



TYPE "C" SAWED OR PREFORMED STRIP LONGITUDINAL OR TRANSVERSE

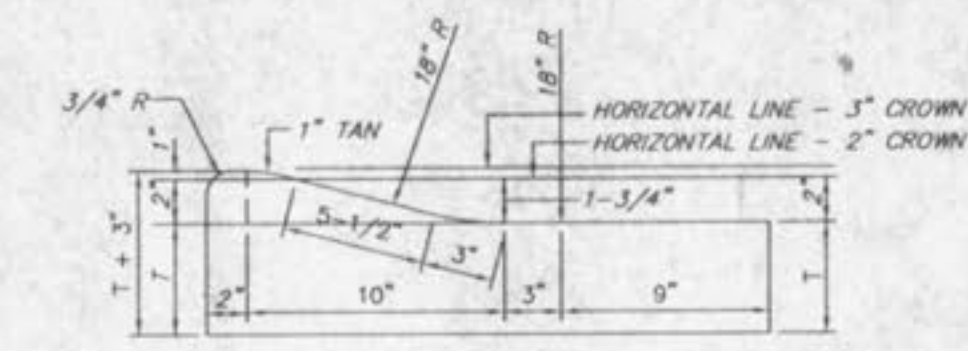


TYPE "D" BUTT JOINT FORMED BULK HEAD TRANSVERSE CONSTRUCTION JOINT



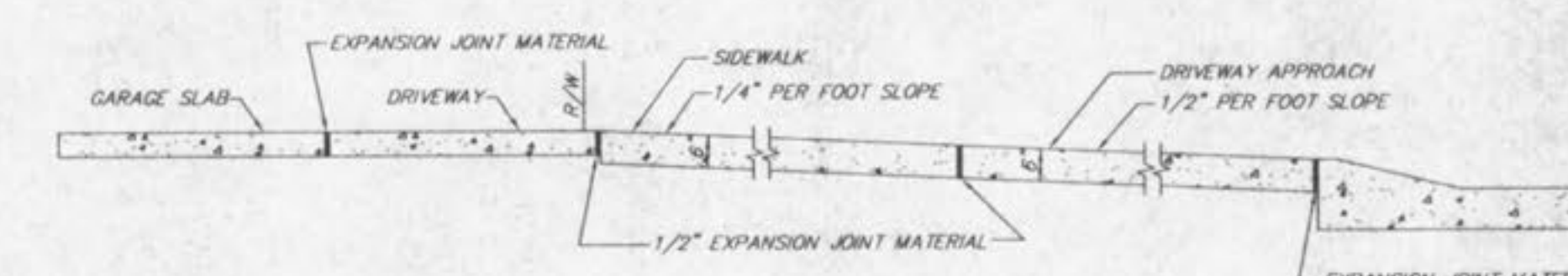
TYPE "E" DEFORMED TIE BARS IN LONGITUDINAL JOINT ONLY TIED TRANSVERSE CONSTRUCTION JOINT

NOTE: Joint Sealer Material shall meet A.S.T.M. and A.A.S.H.T.O. Designations as follows:
A.S.T.M. D-3405... A.A.S.H.T.O. M-301 or A.S.T.M. D-1190-74... A.A.S.H.T.O. M-123-84 or the latest revisions thereof.



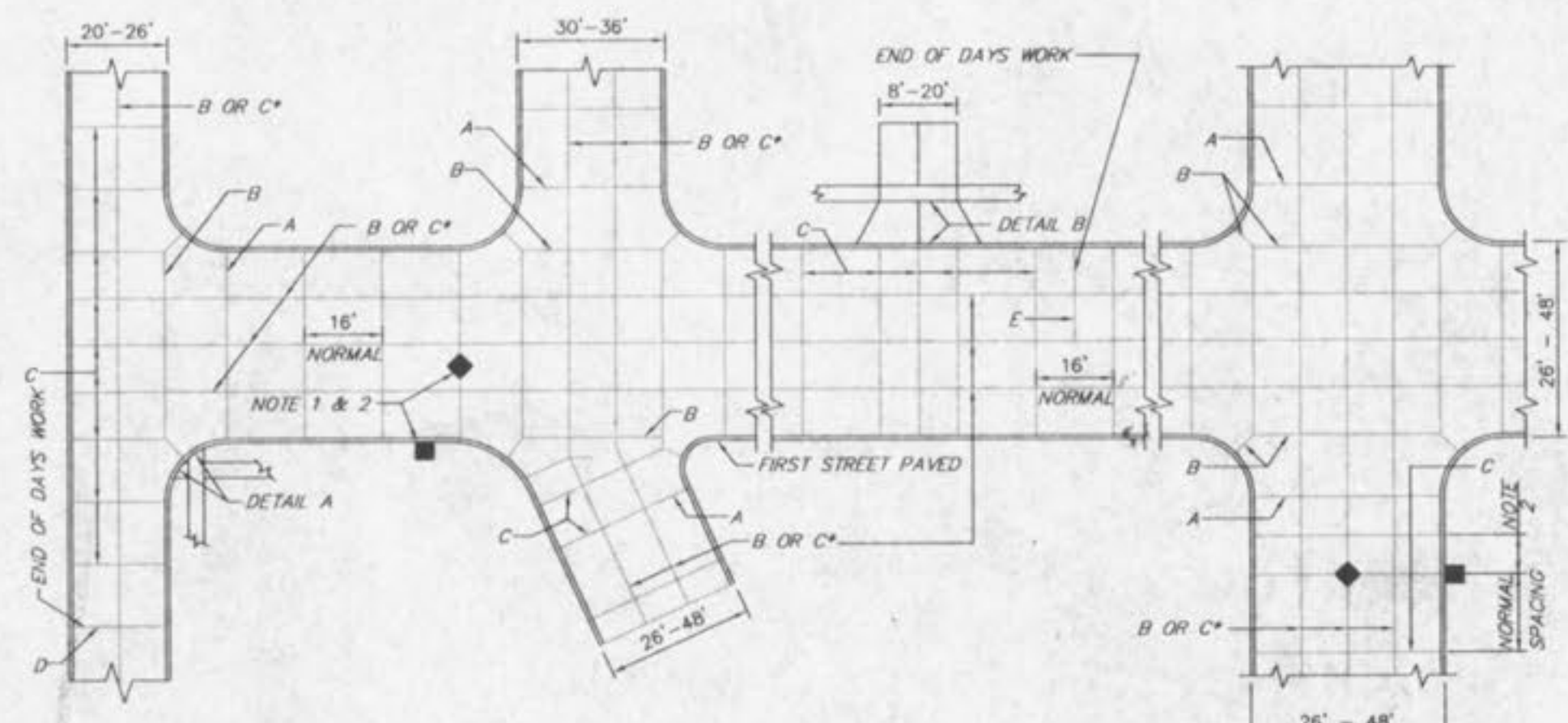
INTEGRAL ROLLED CURB

INTEGRAL CURB PAVEMENT TYPICAL SECTIONS AND DETAILS

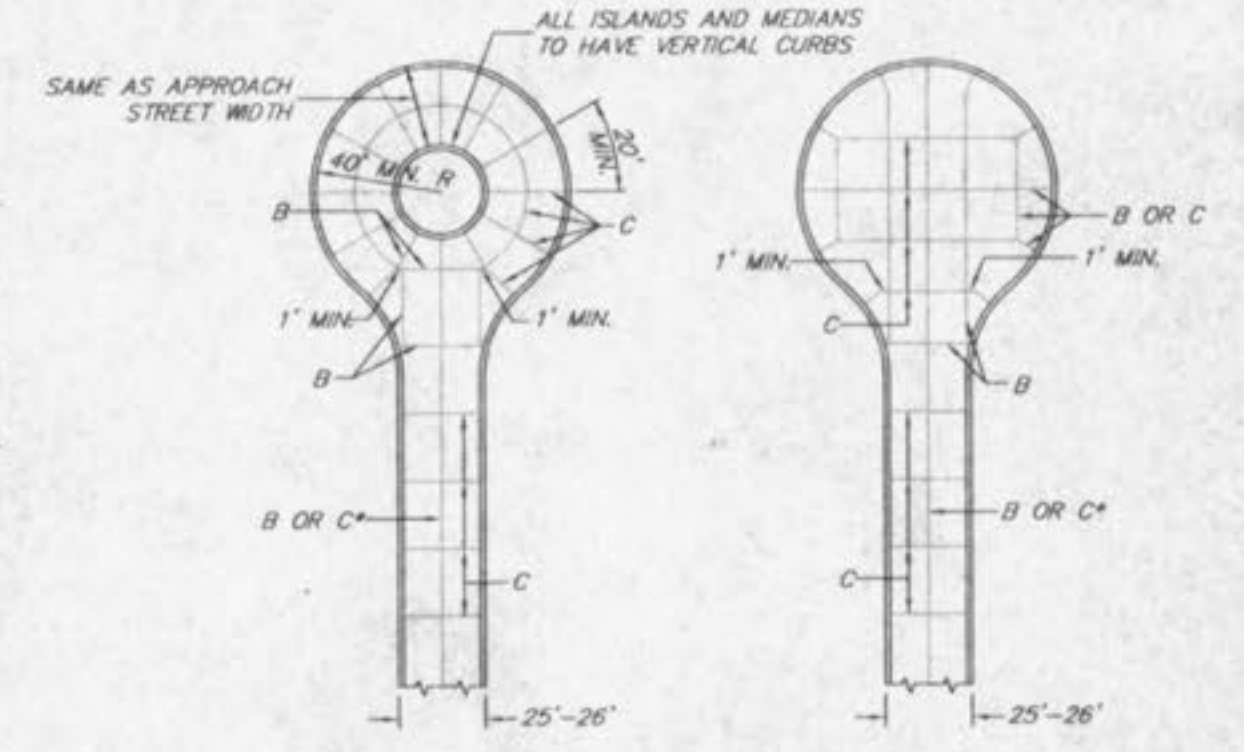


INTEGRAL CURB DETAIL "B" AT DRIVEWAYS

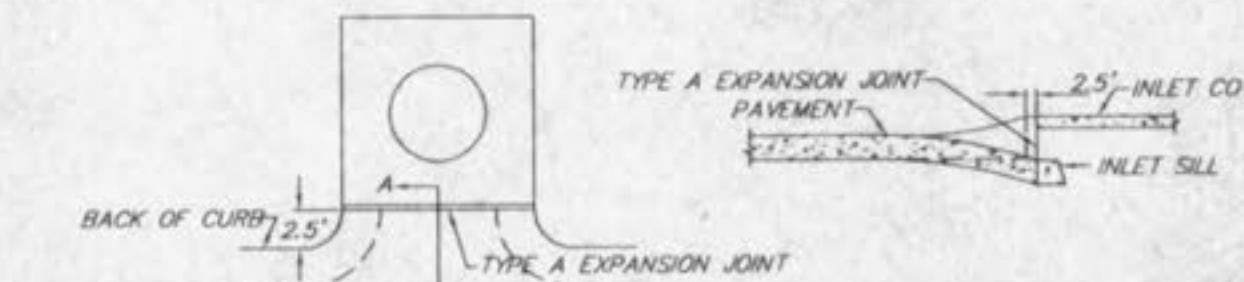
N.T.S.



PLAN OF JOINT LOCATION



MANHOLE BOXING



INLET JOINT

SECTION A-A

- NOTES**
- ALL CATCH BASINS SHALL BE SEPARATED FROM THE PAVEMENT AND CURB BY EXPANSION JOINT MATERIAL EXTENDING COMPLETELY THROUGH CURB AND SLAB. MANHOLE CASTINGS WITHIN THE PAVEMENT LIMITS SHALL BE BOXED IN AS SHOWN.
 - WHEN A JOINT FALLS WITHIN 5 FEET OF OR CONTACTS BASIN, MANHOLES OR OTHER STRUCTURES, SHORTEN 5 FEET OR MORE PANELS EITHER SIDE OF OPENING TO PERMIT JOINT TO FALL ON ROUND STRUCTURES AND AT OR BETWEEN CORNERS OF RECTANGULAR STRUCTURES.
 - T = 6" ON LOCAL STREET.
 - T = 7" ON MAJOR OR THRU STREET.