

SEE SHEET 3

Revised: July 9, 2002
 Revised: August 5, 2002
 Revised: August 21, 2002
 Revised: Sept. 5, 2002
 Revised: Sept. 19, 2002
 Revised: Sept. 30, 2002
 May 31, 2002 00-11289

SITE PLAN
AMBER MEADOWS

WOODS FORT DRIVE

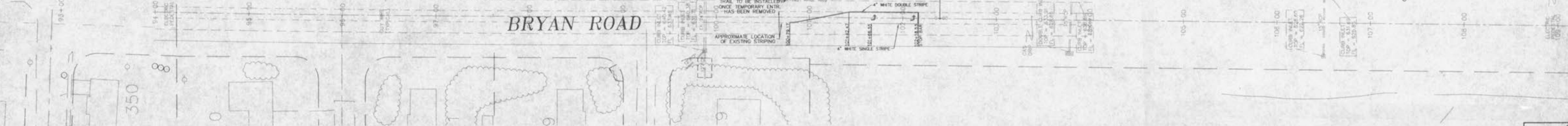
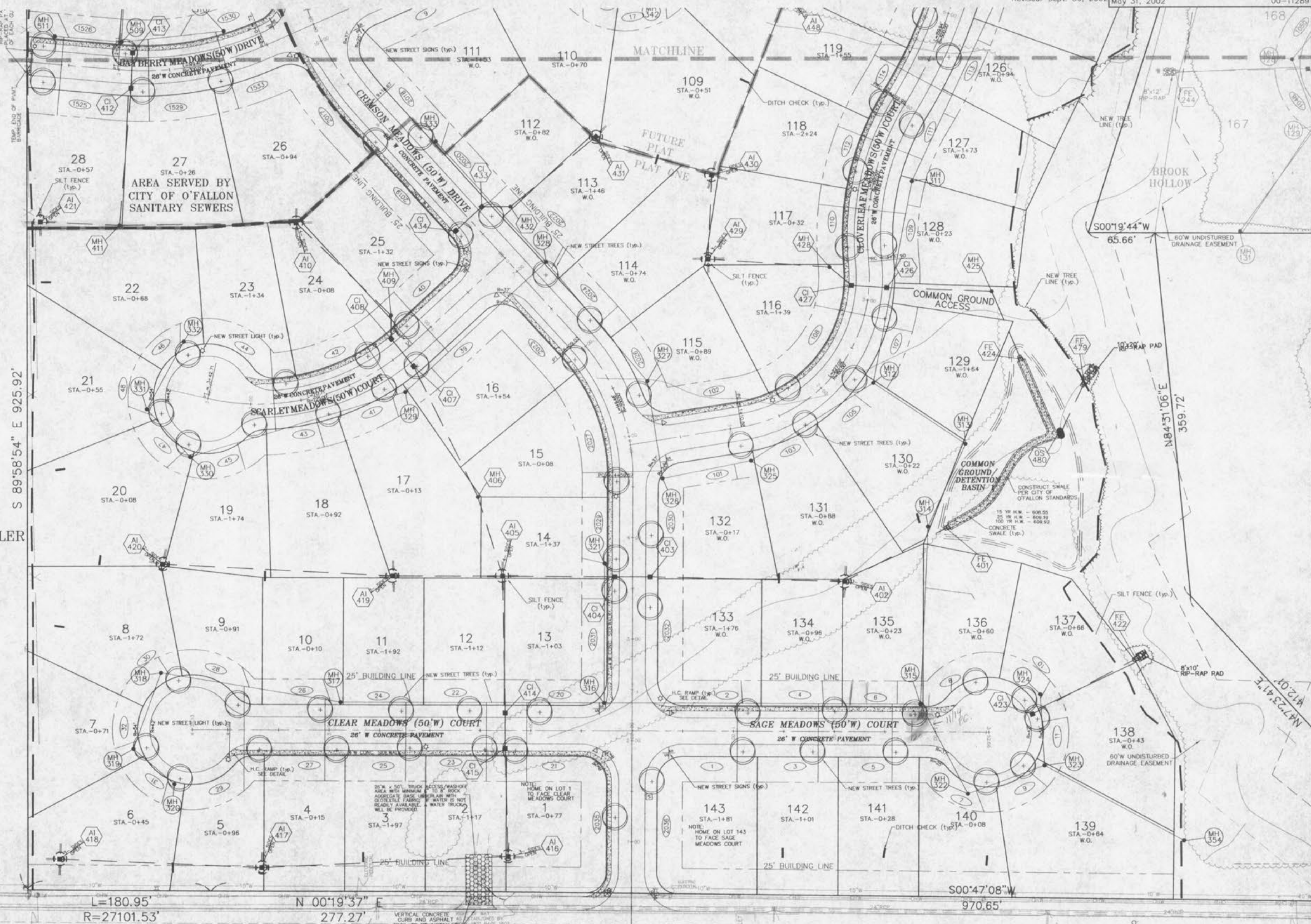
GLENMARIO PLAT THREE
 PB. 34 PG. 188-189

SIGN LEGEND

- STREET SIGN
- STOP SIGN
- YIELD SIGN
- TEMP. END OF PAVT SIGN
- SPEED LIMIT SIGN
- NO OUTLET SIGN
- NO PARKING SIGN



PROPERTY N/F
 TIMOTHY AND LYNN MILLER
 2338/321



Underground utilities have been plotted from available information and, therefore, their locations shall be considered approximate only. The verification of the location of all underground utilities, either shown or not shown, on these plans shall be the responsibility of the Contractor, and shall be located prior to any grading or construction of the improvements.

Note: Street trees shown are to be installed upon completion of home site by homebuilder in conjunction with sidewalk installation.

These engineering plans have been prepared at the request of the developer for construction with some rock data, but not sufficient enough to determine the exact location of all existing rock conditions.

If existing rock conditions are encountered during construction it shall be the responsibility of the developer and/or his contractor to contact Box Engineering Co., Inc. and the soils engineer for the project at the time of encounter to determine the best design to continue construction.