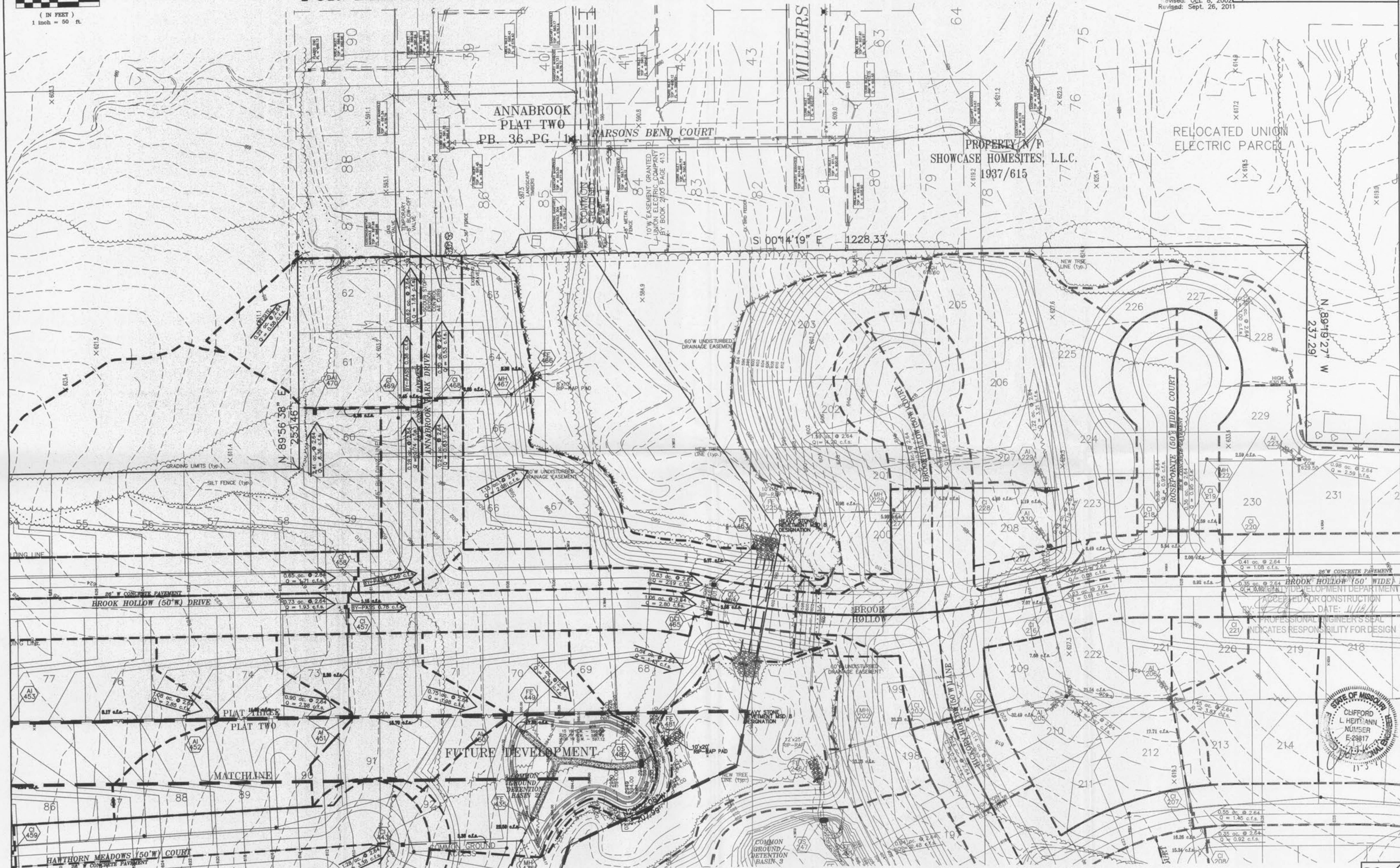
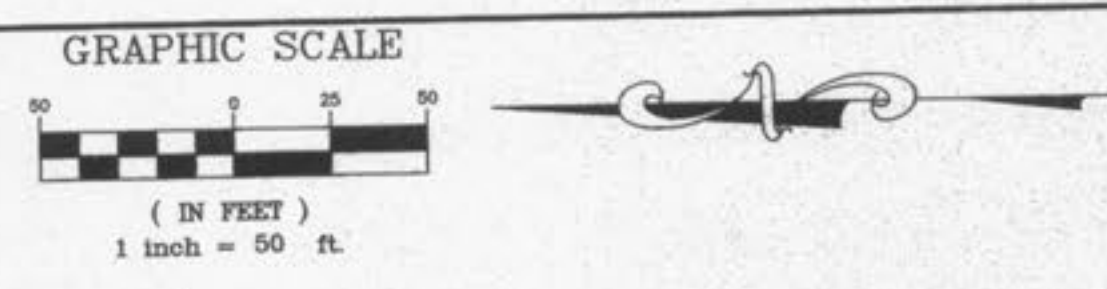


FOR DRAINAGE AREA PURPOSES ONLY. NOT TO BE USED FOR CONSTRUCTION

Revised: March 29, 2004  
Revised: July 9, 2002  
Revised: August 5, 2002  
Revised: August 21, 2002  
Revised: Sept. 5, 2002  
Revised: Sept. 19, 2002  
Revised: Sept. 30, 2002  
Revised: Oct. 8, 2002  
Revised: Sept. 26, 2011

DRAINAGE AREA MAP  
**AMBER MEADOWS**  
May 31, 2002  
00-11289



Underground utilities have been plotted from available information and, therefore, their locations shall be considered approximate only. The verification of the location of all underground utilities, either shown or not shown, on these plans shall be the responsibility of the Contractor, and shall be located prior to any grading or construction of the Improvements.

These engineering plans have been prepared at the request of the developer for construction with some rock data, but not sufficient enough to determine the exact location of all existing rock conditions.

If existing rock conditions are encountered during construction it shall be the responsibility of the developer and/or his contractor to contact Box Engineering Co., Inc. and the soils engineer for the project at the time of encounter to determine the best design to continue construction.



26  
33

RECEIVED  
NOV 03 2011  
BY: \_\_\_\_\_