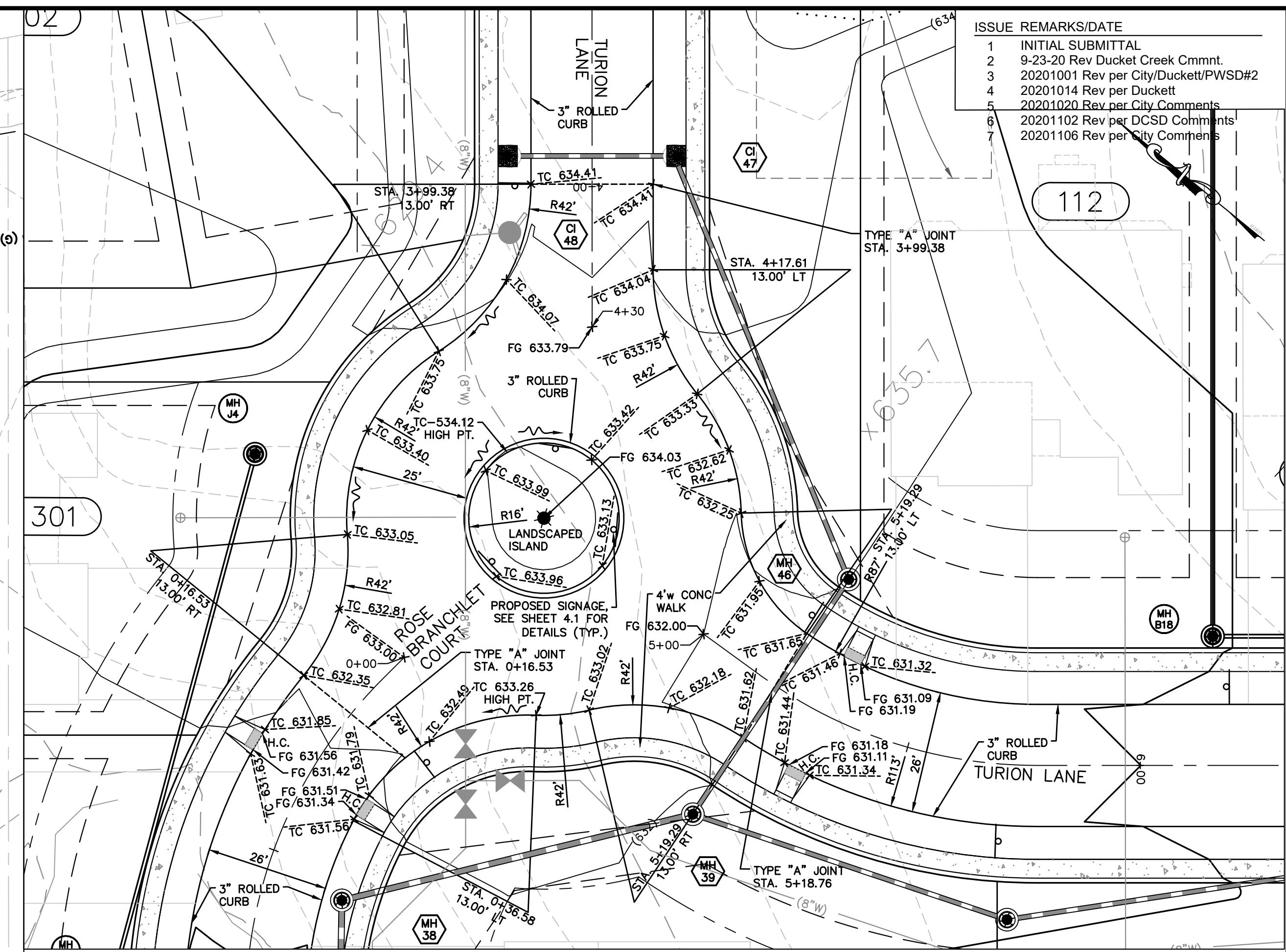
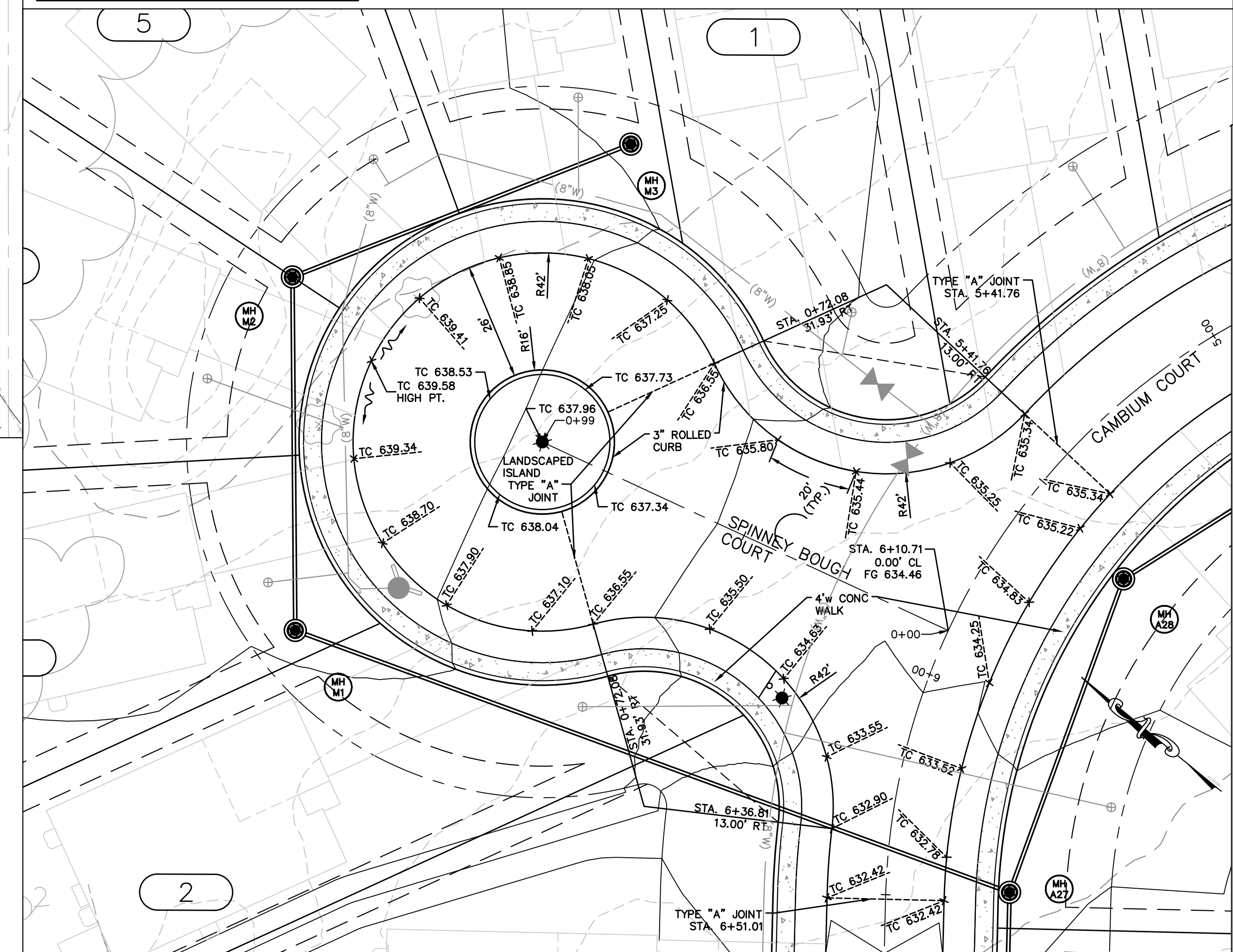


DIEHR ROAD & TURION LANE ENTRANCE
SCALE: 1"=20'

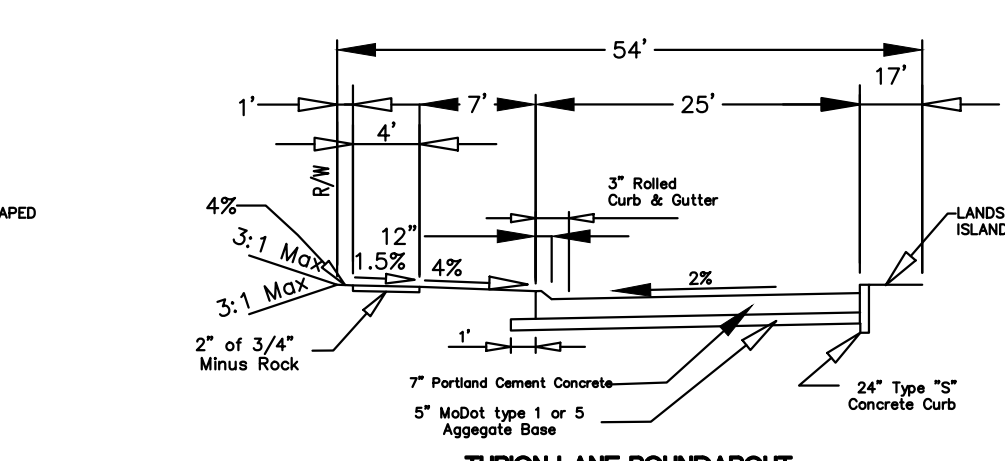
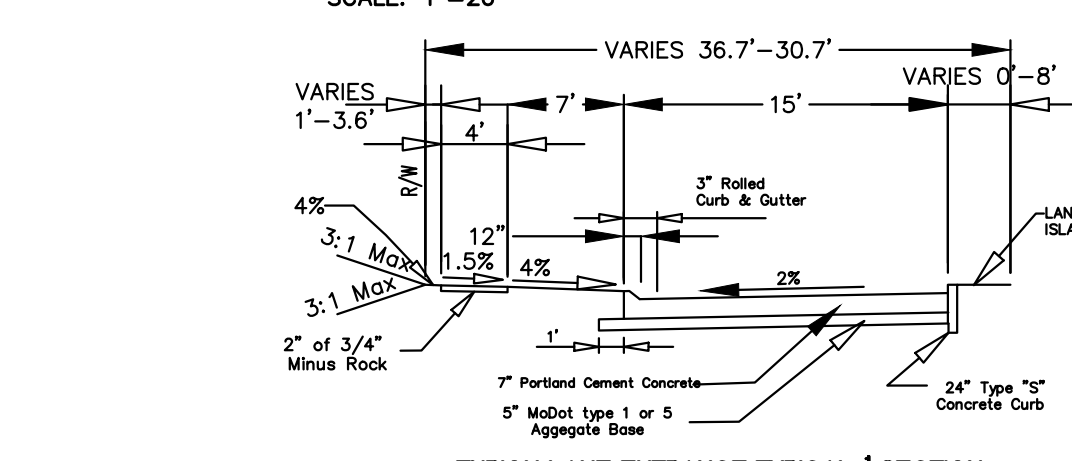
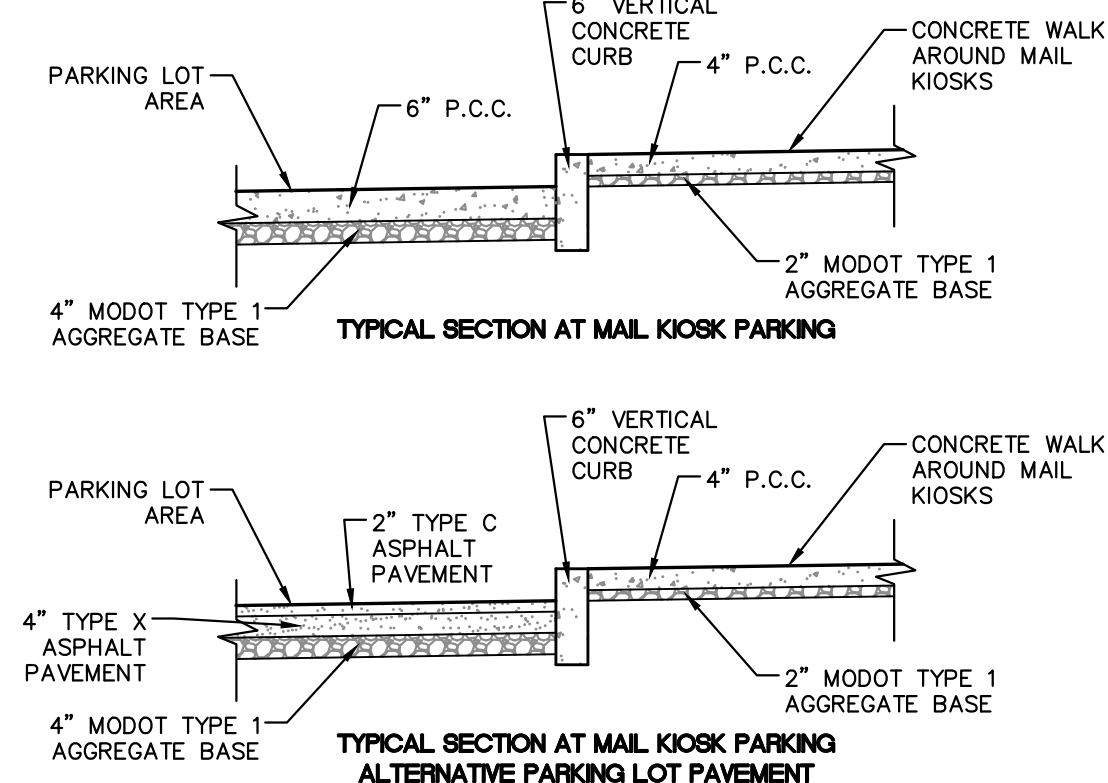


TURION LANE ROUNDABOUT
SCALE: 1"=20'

NOTE: STREET LIGHTS LOCATED IN ISLANDS TO CAST LIGHT IN ALL 360°



SPINNEY BOUGH COURT
SCALE: 1"=20'



THE UNDERGROUND UTILITIES SHOWN HEREON WERE PLOTTED FROM AVAILABLE INFORMATION AND DO NOT NECESSARILY REFLECT THE ACTUAL EXISTENCE, NONEXISTENCE, SIZE, TYPE, NUMBER OR LOCATION OF THESE OR OTHER UTILITIES. THE GENERAL CONTRACTOR SHALL BE RESPONSIBLE FOR VERIFYING THE ACTUAL LOCATION OF ALL UNDERGROUND UTILITIES SHOWN OR NOT SHOWN, AND SAID UTILITIES SHALL BE LOCATED IN THE FIELD PRIOR TO ANY GRADING, EXCAVATION OR CONSTRUCTION OF IMPROVEMENTS. THESE PROVISIONS SHALL IN NO WAY ABSOLVE ANY PARTY FROM COMPLYING WITH THE UNDERGROUND FACILITY SAFETY AND DAMAGE PREVENTION ACT, CHAPTER 319, RSMo

ISSUE	REMARKS/DATE
1	INITIAL SUBMITTAL
2	9-23-20 Rev Duck Creek Cmmnt
3	20201001 Rev per City/Duckett/PWSD#2
4	20201014 Rev per Duckett
5	20201020 Rev per City Comments
6	20201102 Rev per DCSD Comments
7	20201106 Rev per City Comments

PROJECT TITLE
AMBERLEIGH
O'FALLON, MISSOURI

THE STERLING CO.
ENGINEERS & SURVEYORS
5055 New Baumgartner Road
St. Louis, Missouri 63129
Ph 314-487-0440 Fax 314-487-8944
www.sterling-eng-survey.com
Corporate Certificate of Authority #001348

STATE OF MISSOURI
JASON D. HOWELL
NUMBER PE-2007002801
PROFESSIONAL ENGINEER

Date: 5-18-2021
Jason D Howell
License No. PE 2007002801
Professional Engineer

LOMBARDO HOMES OF ST. LOUIS, LLC
2299 TECHNOLOGY DRIVE, SUITE 150
O'FALLON, MISSOURI 63368
Ph 636-265-2710
Fax 636-695-3195

WARPIG DETAILS

P+Z No. 20-000028
City No. 20-003192
Date: May 18, 2021
Job No. 14-04-136
Page No. **10.1** IMP

FINAL PLAN Approval Date: March 27, 2020