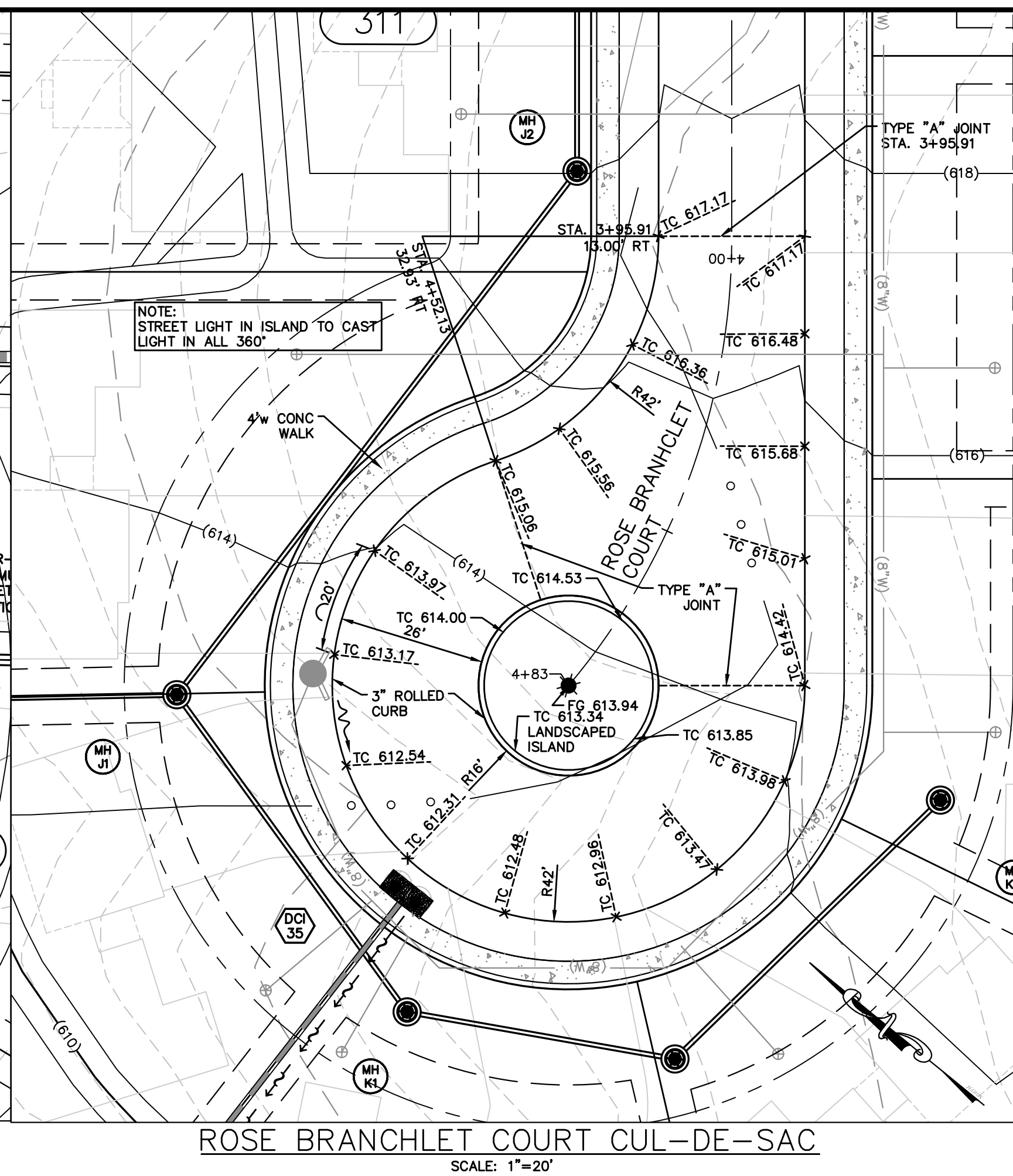
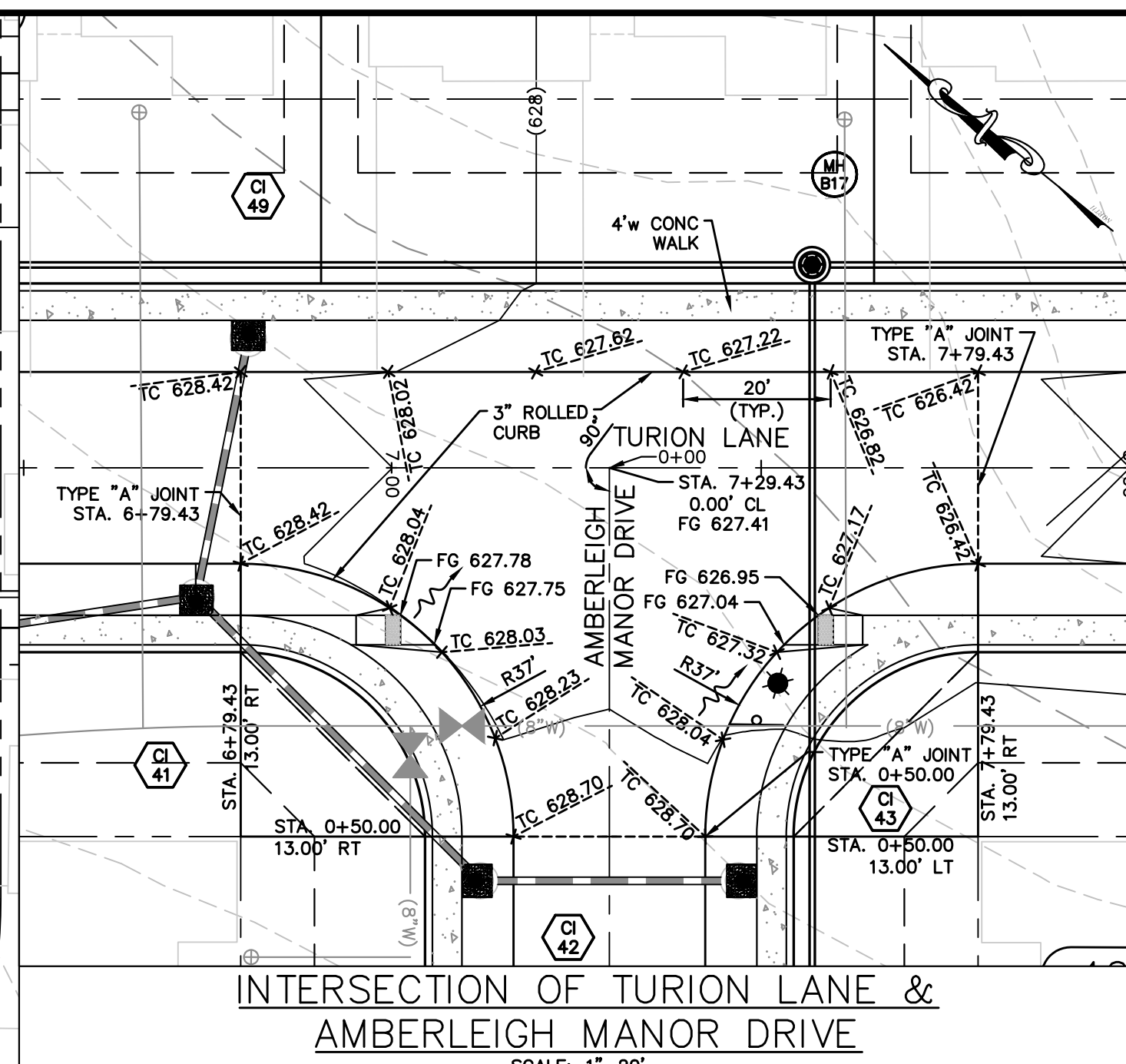


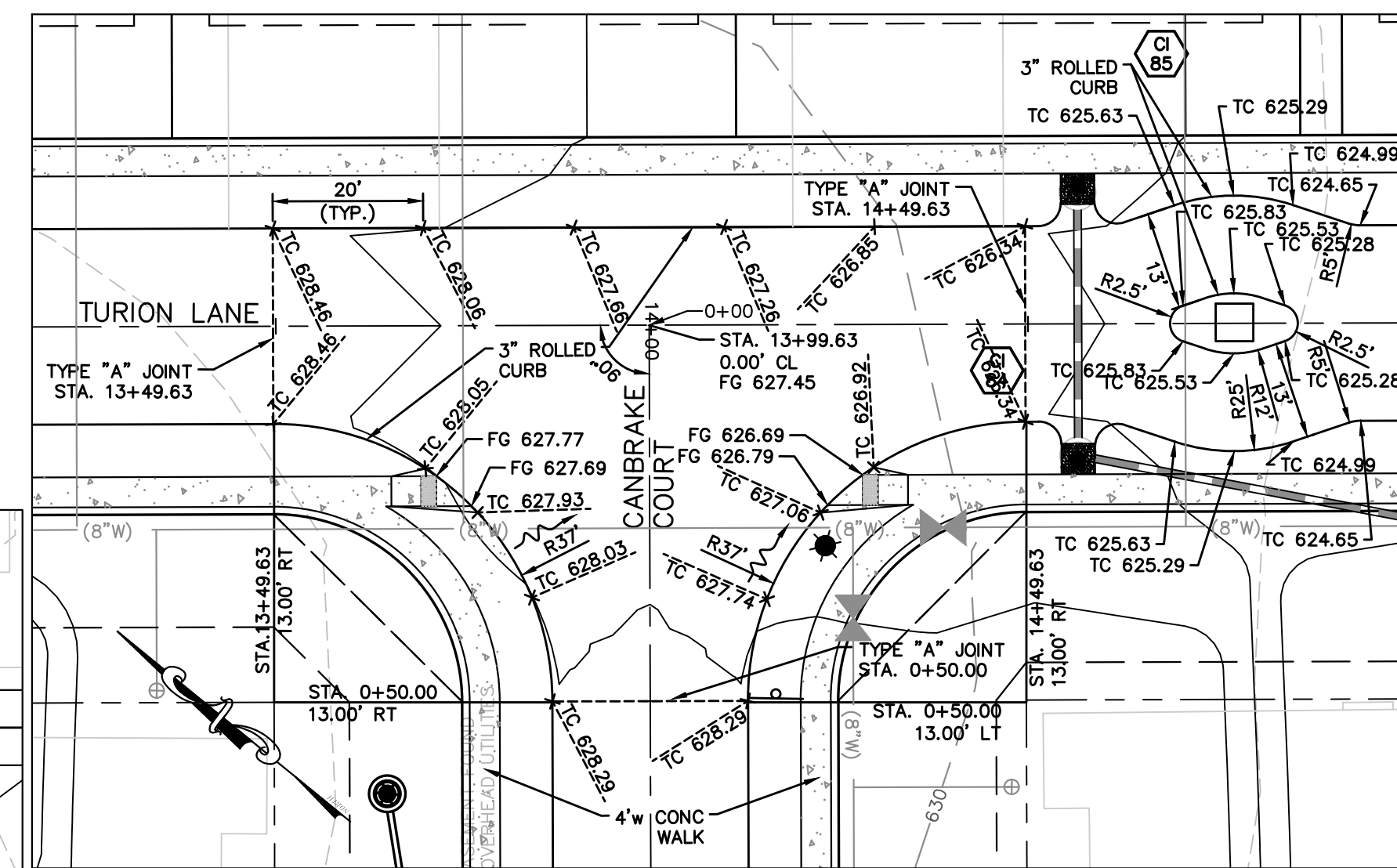
CAMBIMUM COURT CUL-DE-SAC
SCALE: 1"=20'



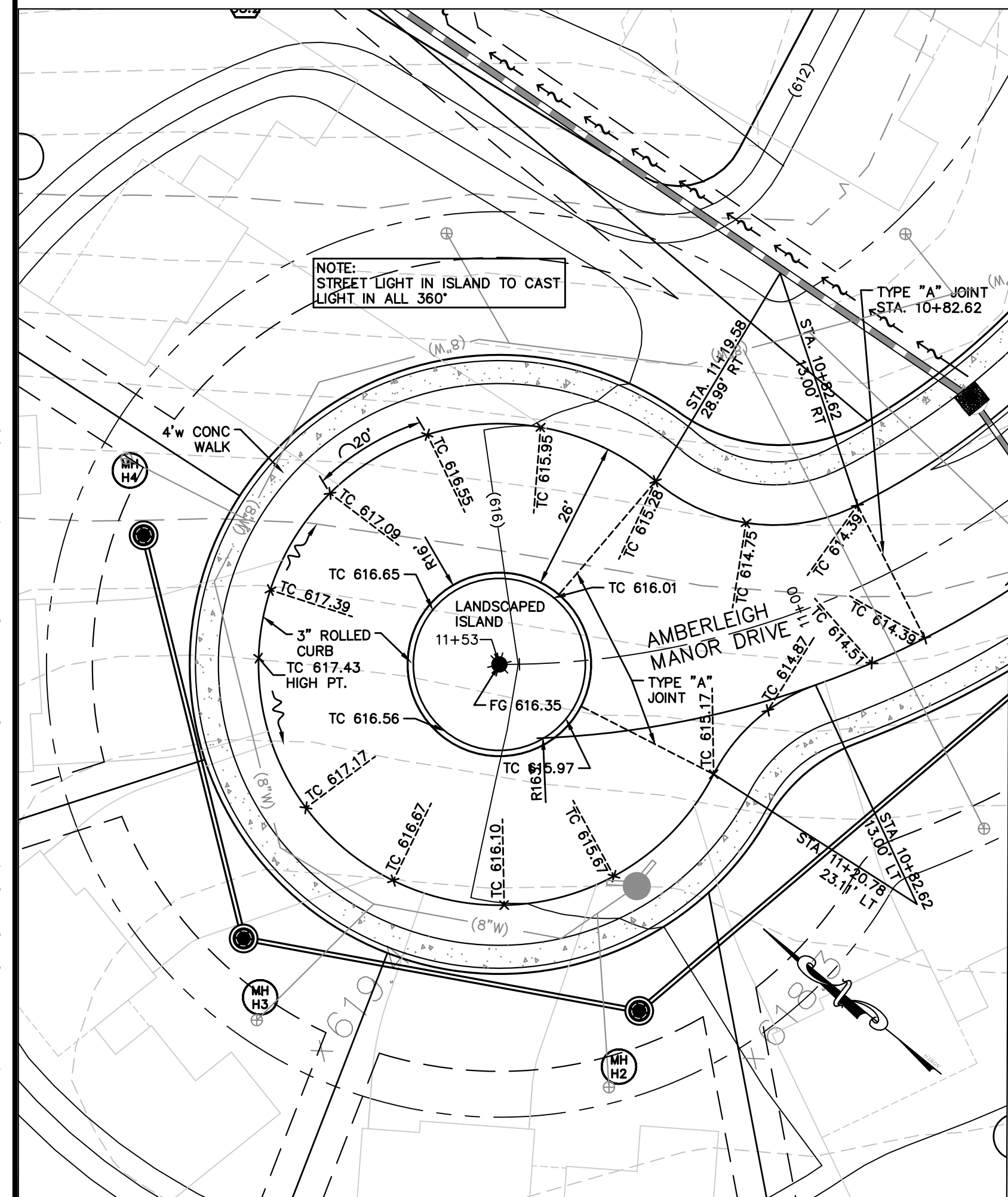
ROSE BRANCHLET COURT CUL-DE-SAC
SCALE: 1"=20'



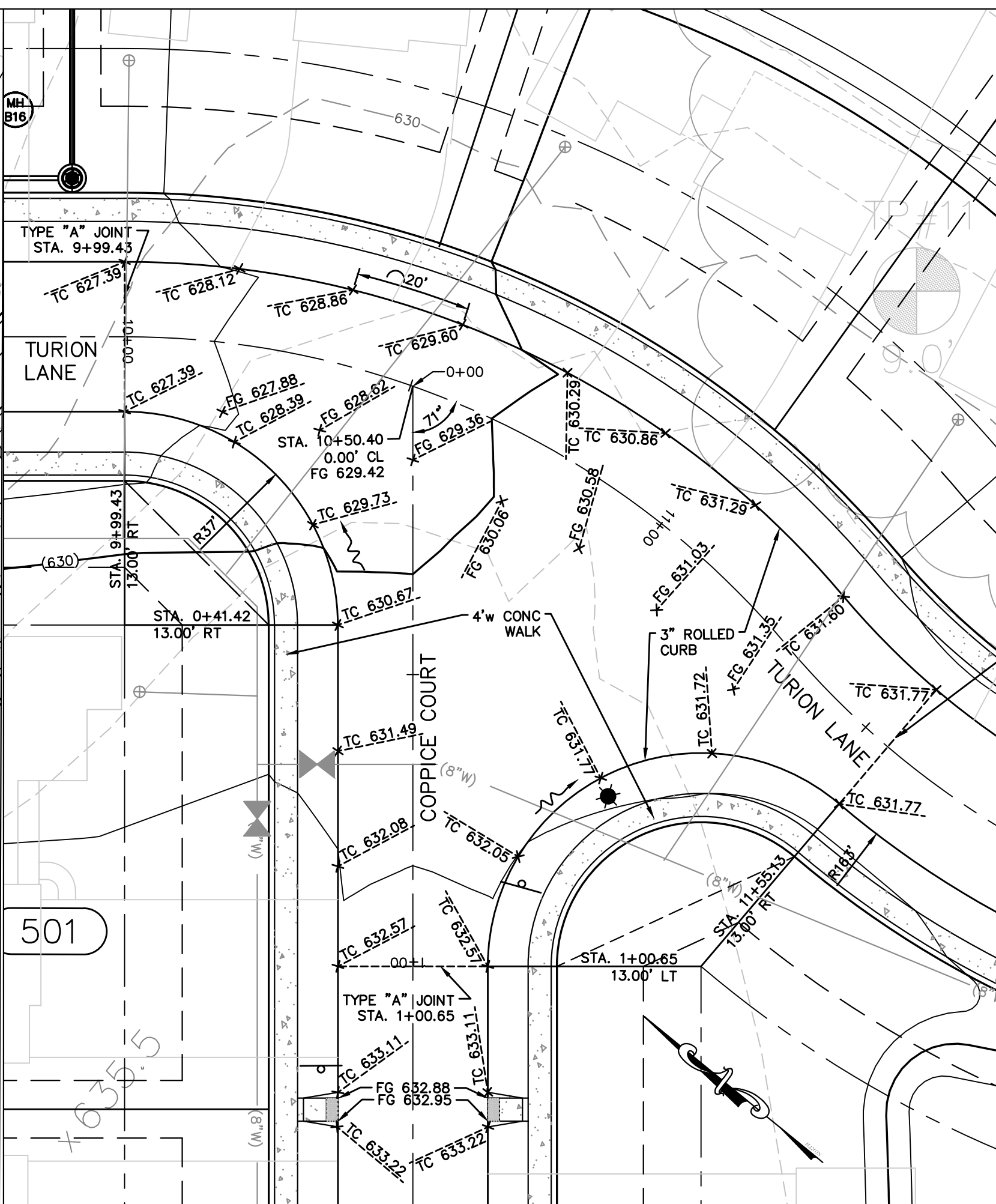
INTERSECTION OF TURION LANE &
AMBERLEIGH MANOR DRIVE
SCALE: 1"=20'



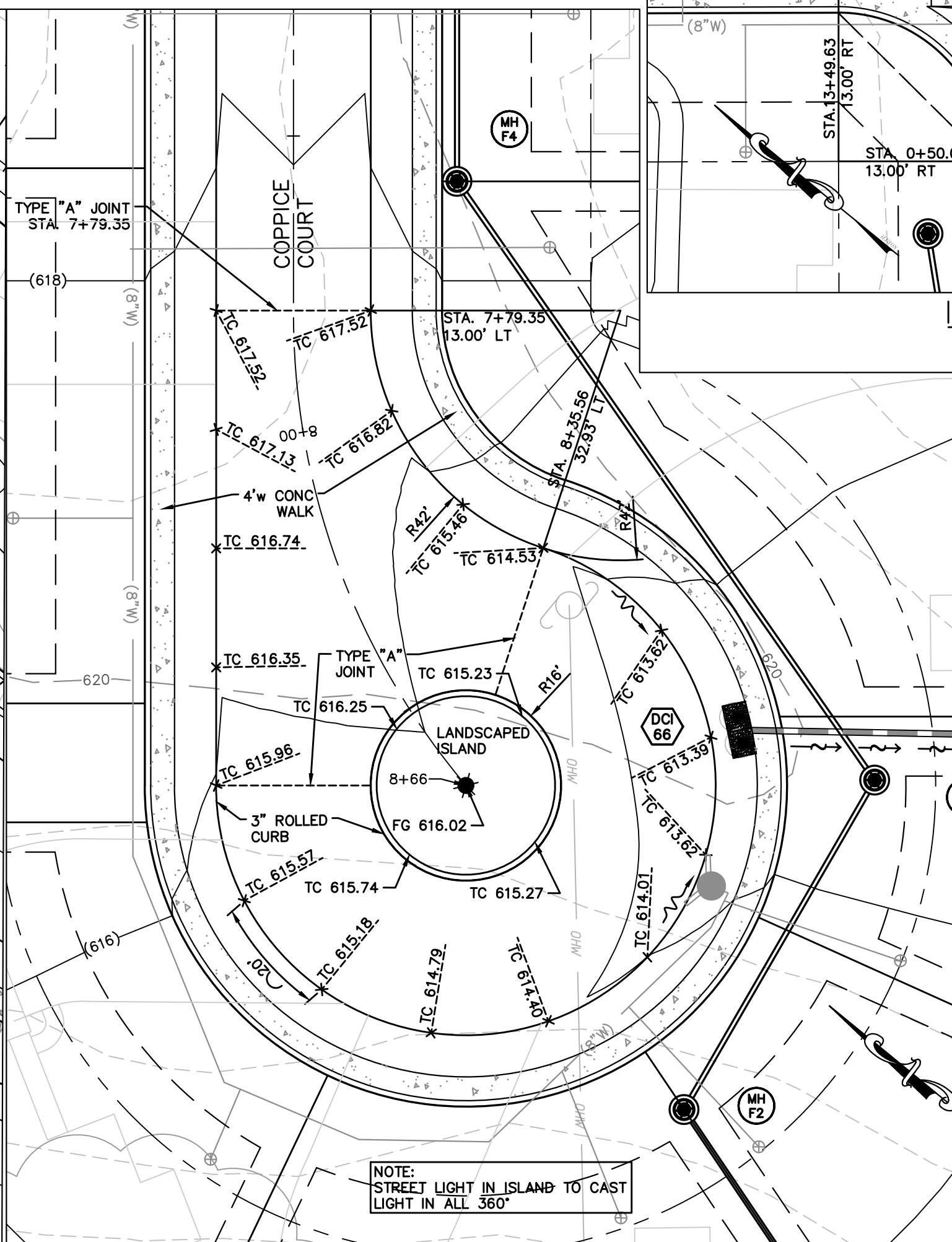
INTERSECTION OF TURION LANE &
CANBRAKE COURT
SCALE: 1"=20'



AMBERLEIGH MANOR DRIVE CUL-DE-SAC
SCALE: 1"=20'



INTERSECTION OF TURION LANE &
COPPICE COURT
SCALE: 1"=20'



COPPICE COURT CUL-DE-SAC
SCALE: 1"=20'

- ISSUE REMARKS/DATE
- 1 INITIAL SUBMITTAL
 - 2 9-23-20 Rev Ducket Creek Cmmnt
 - 3 20201001 Rev per City/Ducket/PWSD#2
 - 4 20201014 Rev per Ducket
 - 5 20201020 Rev per City Comments
 - 6 20201102 Rev per DCSD Comments
 - 7 20201106 Rev per City Comments
 - 8 20210701 Rev Per City Comments

PROJECT TITLE

THE **STERLING** CO.
ENGINEERS & SURVEYORS
5055 New Baumgartner Road
St. Louis, Missouri 63129
Ph 314-487-0440 Fax 314-487-8944
www.sterling-eng-sur.com
Corporate Certificate of Authority #001348



Date: 7-1-2021
Jason D Howell
License No. PE 2007002801
Professional Engineer

LOMBARDO HOMES OF ST. LOUIS, LLC
2299 TECHNOLOGY DRIVE, SUITE 150
OFALLON, MISSOURI 63368
Ph. 636-265-2710
Fax 636-695-3195

WARPING DETAILS

P+Z No. 20-00028
City No. 20-003192
Date: July 1, 2021
Job No. 14-04-136

Page No.

10.2

IMP