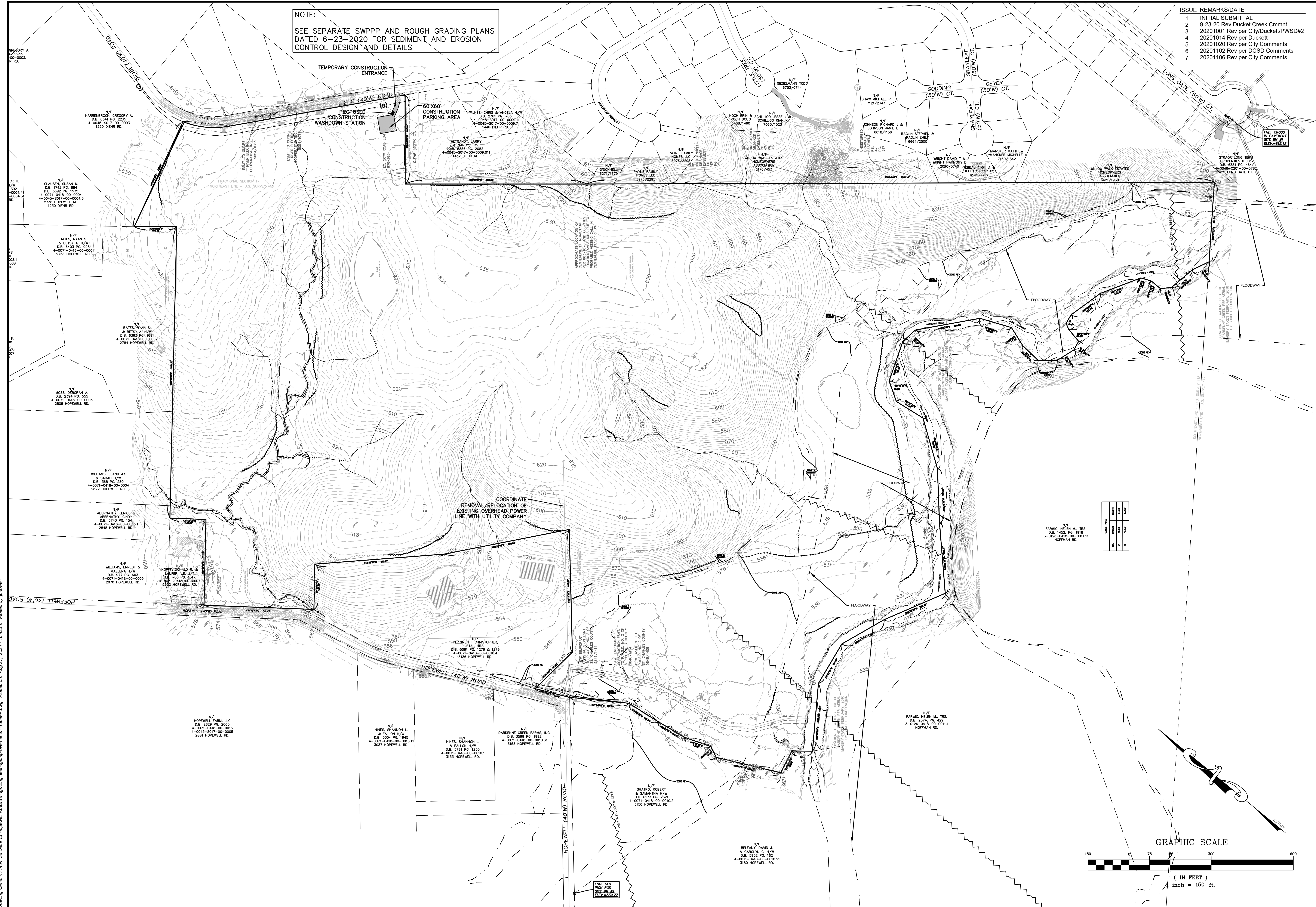


NOTE:
SEE SEPARATE SWPPP AND ROUGH GRADING PLANS DATED 6-23-2020 FOR SEDIMENT AND EROSION CONTROL DESIGN AND DETAILS

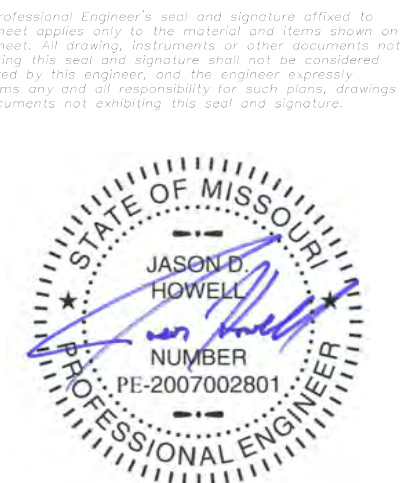
- ISSUE REMARKS/DATE
- 1 INITIAL SUBMITTAL
 - 2 9-23-20 Rev Duckett Creek Cmnt
 - 3 20201001 Rev per City/Duckett/PWSD#2
 - 4 20201014 Rev per Duckett
 - 5 20201020 Rev per City Comments
 - 6 20201102 Rev per DCSD Comments
 - 7 20201106 Rev per City Comments



PROJECT TITLE

AMBERLEIGH
OF FALLON, MISSOURI

THE STERLING CO.
ENGINEERS & SURVEYORS
5055 New Baumgartner Road
St. Louis, Missouri 63129
Ph 314-487-0440 Fax 314-487-8944
www.sterling-eng-survey.com
Corporate Certificate of Authority #001348



Date: 5-18-2021
Jason D Howell
License No. PE 2007002801
Professional Engineer

LOMBARDO HOMES OF ST. LOUIS, LLC
2299 TECHNOLOGY DRIVE, SUITE 150
OF FALLON, MISSOURI 63368
Ph. 636-265-2710
Fax 636-695-3195

EXISTING CONDITIONS

P+Z No. 20-000028
City No. 20-003192
Date: May 18, 2021
Job No. 14-04-136

Page No.
2.1

IMP

Drawing name: V:\1404136 Dier.ctb Hopewell RD\Drawings\Improvements\136IMP.dwg Printed on: Aug 27, 2021 - 10:42am Plotted by: jhowell