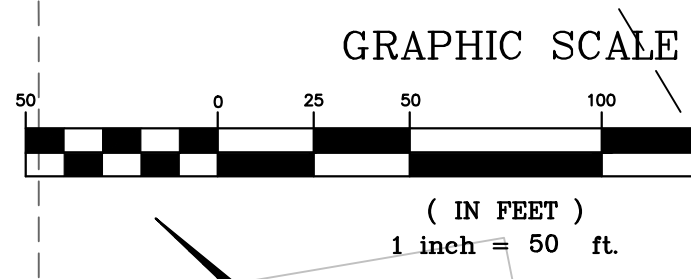
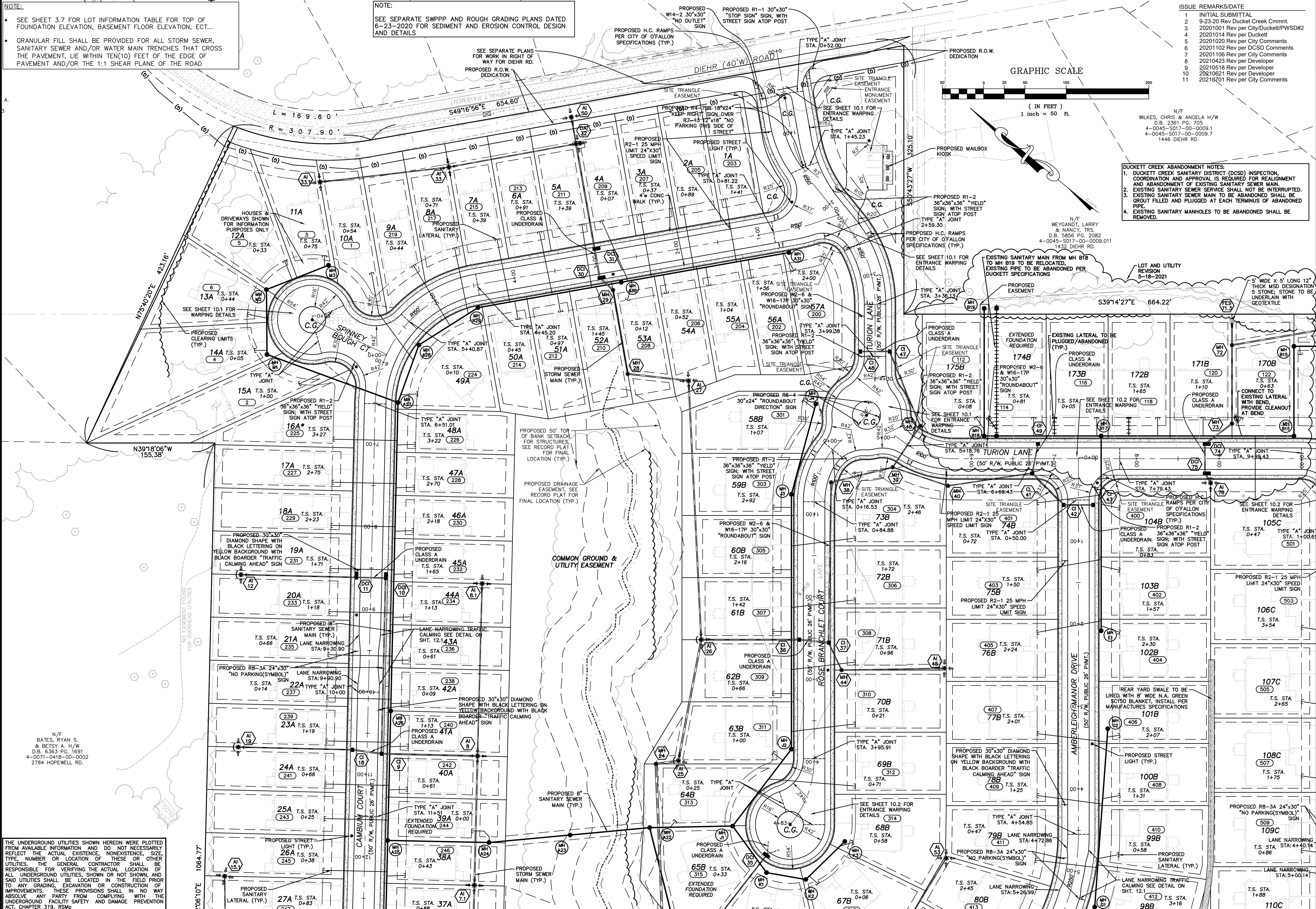


NOTE:

- SEE SHEET 3.7 FOR LOT INFORMATION TABLE FOR TOP OF FOUNDATION ELEVATION, BASEMENT FLOOR ELEVATION, ECT...
- GRANULAR FILL SHALL BE PROVIDED FOR ALL STORM SEWER, SANITARY SEWER AND/OR WATER MAIN TRENCHES THAT CROSS THE PAVEMENT, LIE WITHIN TEN(10) FEET OF THE EDGE OF PAVEMENT AND/OR THE 1:1 SHEAR PLANE OF THE ROAD

NOTE:

SEE SEPARATE SWPPP AND ROUGH GRADING PLANS DATED 6-23-2020 FOR SEDIMENT AND EROSION CONTROL DESIGN AND DETAILS



ISSUE	REMARKS/DATE
1	INITIAL SUBMITTAL
2	9-23-20 Rev Duckett Creek Cmnt
3	20201001 Rev per City/Duckett/PWSD#2
4	20201014 Rev per Duckett
5	20201020 Rev per City Comments
6	20201102 Rev per DCSD Comments
7	20201106 Rev per City Comments
8	20210423 Rev per Developer
9	20210518 Rev per Developer
10	20210621 Rev per Developer
11	20210701 Rev per City Comments

DUCKETT CREEK ABANDONMENT NOTES:

- DUCKETT CREEK SANITARY DISTRICT (DCSD) INSPECTION, COORDINATION AND APPROVAL IS REQUIRED FOR REALIGNMENT AND ABANDONMENT OF EXISTING SANITARY SEWER MAIN
- EXISTING SANITARY SEWER SERVICE SHALL NOT BE INTERRUPTED.
- EXISTING SANITARY SEWER MAIN TO BE ABANDONED SHALL BE GROUT FILLED AND PLUGGED AT EACH TERMINUS OF ABANDONED PIPE.
- EXISTING SANITARY MANHOLES TO BE ABANDONED SHALL BE REMOVED.

N/F
WEYLANDT, LARRY & NANCY, TRS.
D.B. 5856 PG. 2082
4-0045-S017-00-0009.1
1432 DIEHR RD.

PROJECT TITLE

THE STERLING CO.
ENGINEERS & SURVEYORS

5055 New Baumgartner Road
St. Louis, Missouri 63129
Ph 314-487-0440 Fax 314-487-8944
www.sterling-eng-survey.com
Corporate Certificate of Authority #001349

Date: 7-19-2021
Jason D Howell
License No. PE 2007002801
Professional Engineer

LOMBARDO HOMES OF ST. LOUIS, LLC
2299 TECHNOLOGY DRIVE, SUITE 150
OFALLON, MISSOURI 63368
Ph 636-265-2710
Fax 636-695-3195

SITE PLAN

P+Z No. 20-000028
City No. 20-003192
Date: July 19, 2021
Job No. 14-04-136
Page No. **4.1** IMP

THE UNDERGROUND UTILITIES SHOWN HEREON WERE PLOTTED FROM AVAILABLE INFORMATION AND DO NOT NECESSARILY REFLECT THE ACTUAL EXISTENCE, NONEXISTENCE, SIZE, TYPE, NUMBER OR LOCATION OF THESE OR OTHER UTILITIES. THE GENERAL CONTRACTOR SHALL BE RESPONSIBLE FOR VERIFYING THE ACTUAL LOCATION OF ALL UNDERGROUND UTILITIES SHOWN OR NOT SHOWN, AND SAID UTILITIES SHALL BE LOCATED IN THE FIELD PRIOR TO ANY GRADING, EXCAVATION OR CONSTRUCTION OF IMPROVEMENTS. THESE PROVISIONS SHALL IN NO WAY ABSOLVE ANY PARTY FROM COMPLYING WITH THE UNDERGROUND FACILITY SAFETY AND DAMAGE PREVENTION ACT, CHAPTER 319, RSMo