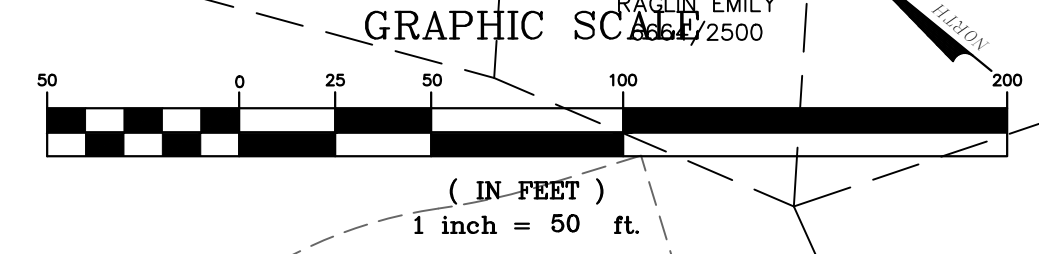
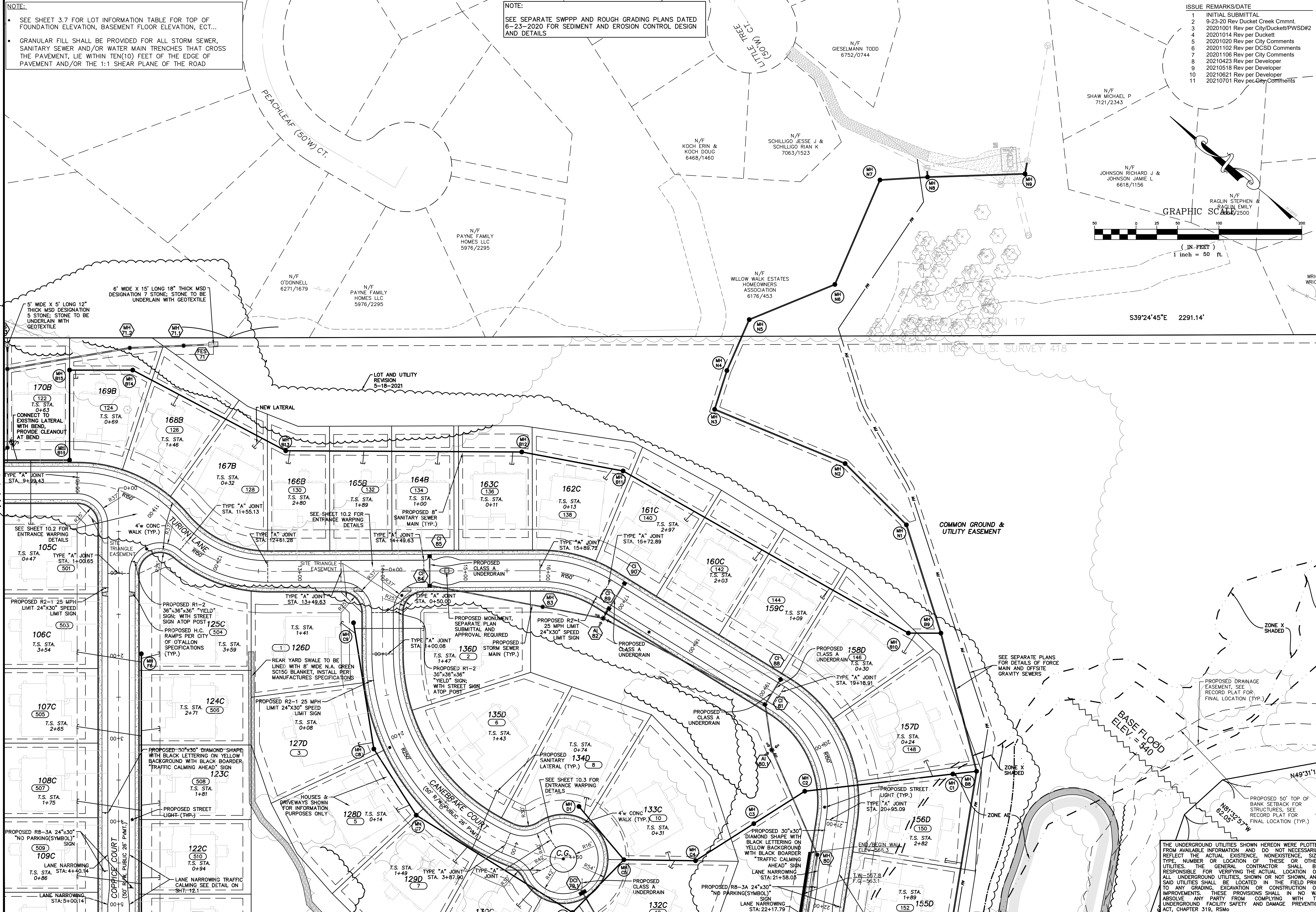


NOTE:
 • SEE SHEET 3.7 FOR LOT INFORMATION TABLE FOR TOP OF FOUNDATION ELEVATION, BASEMENT FLOOR ELEVATION, ECT...
 • GRANULAR FILL SHALL BE PROVIDED FOR ALL STORM SEWER, SANITARY SEWER AND/OR WATER MAIN TRENCHES THAT CROSS THE PAVEMENT, LIE WITHIN TEN(10) FEET OF THE EDGE OF PAVEMENT AND/OR THE 1:1 SHEAR PLANE OF THE ROAD

NOTE:
 SEE SEPARATE SWPPP AND ROUGH GRADING PLANS DATED 6-23-2020 FOR SEDIMENT AND EROSION CONTROL DESIGN AND DETAILS

| ISSUE | REMARKS/DATE |
|-------|--------------------------------------|
| 1 | INITIAL SUBMITTAL |
| 2 | 9-23-20 Rev Duckett Creek Cmnt |
| 3 | 20201001 Rev per City/Duckett/PWSD#2 |
| 4 | 20201014 Rev per Duckett |
| 5 | 20201020 Rev per City Comments |
| 6 | 20201102 Rev per DCSD Comments |
| 7 | 20201106 Rev per City Comments |
| 8 | 20210423 Rev per Developer |
| 9 | 20210518 Rev per Developer |
| 10 | 20210621 Rev per Developer |
| 11 | 20210701 Rev per City Comments |



PROJECT TITLE
AMBERLEIGH
 OF FALLON, MISSOURI

THE **STERLING** CO.
 ENGINEERS & SURVEYORS
 5055 New Baumgartner Road
 St. Louis, Missouri 63129
 Ph. 314-487-0440 Fax 314-487-8944
 www.sterling-eng-survey.com
 Corporate Certificate of Authority #001348

Date: 7-19-2021
 Jason D Howell
 License No. PE 2007002801
 Professional Engineer

LOMBARDO HOMES OF ST. LOUIS, LLC
 2299 TECHNOLOGY DRIVE, SUITE 150
 OF FALLON, MISSOURI 63368
 Ph. 636-265-2710
 Fax 636-695-3195

P+Z No. 20-000028
 City No. 20-003192
 Date: July 19, 2021
 Job No. 14-04-136
 Page No. **4.2**
 IMP

Drawing name: V:\1404136\Drawings\Engineering\Improvements\136IMP.dwg Printed on: Aug 27, 2021 - 11:03am Plotted by: jhowell