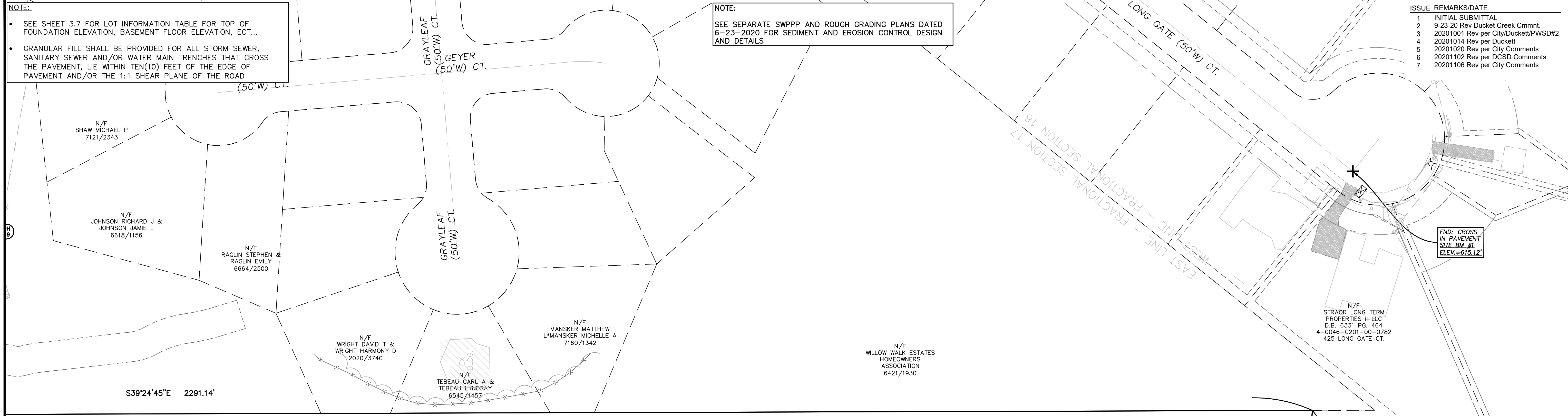


NOTE:  
 • SEE SHEET 3.7 FOR LOT INFORMATION TABLE FOR TOP OF FOUNDATION ELEVATION, BASEMENT FLOOR ELEVATION, ECT...  
 • GRANULAR FILL SHALL BE PROVIDED FOR ALL STORM SEWER, SANITARY SEWER AND/OR WATER MAIN TRENCHES THAT CROSS THE PAVEMENT, LIE WITHIN TEN(10) FEET OF THE EDGE OF PAVEMENT AND/OR THE 1:1 SHEAR PLANE OF THE ROAD

NOTE:  
 SEE SEPARATE SWPPP AND ROUGH GRADING PLANS DATED 6-23-2020 FOR SEDIMENT AND EROSION CONTROL DESIGN AND DETAILS

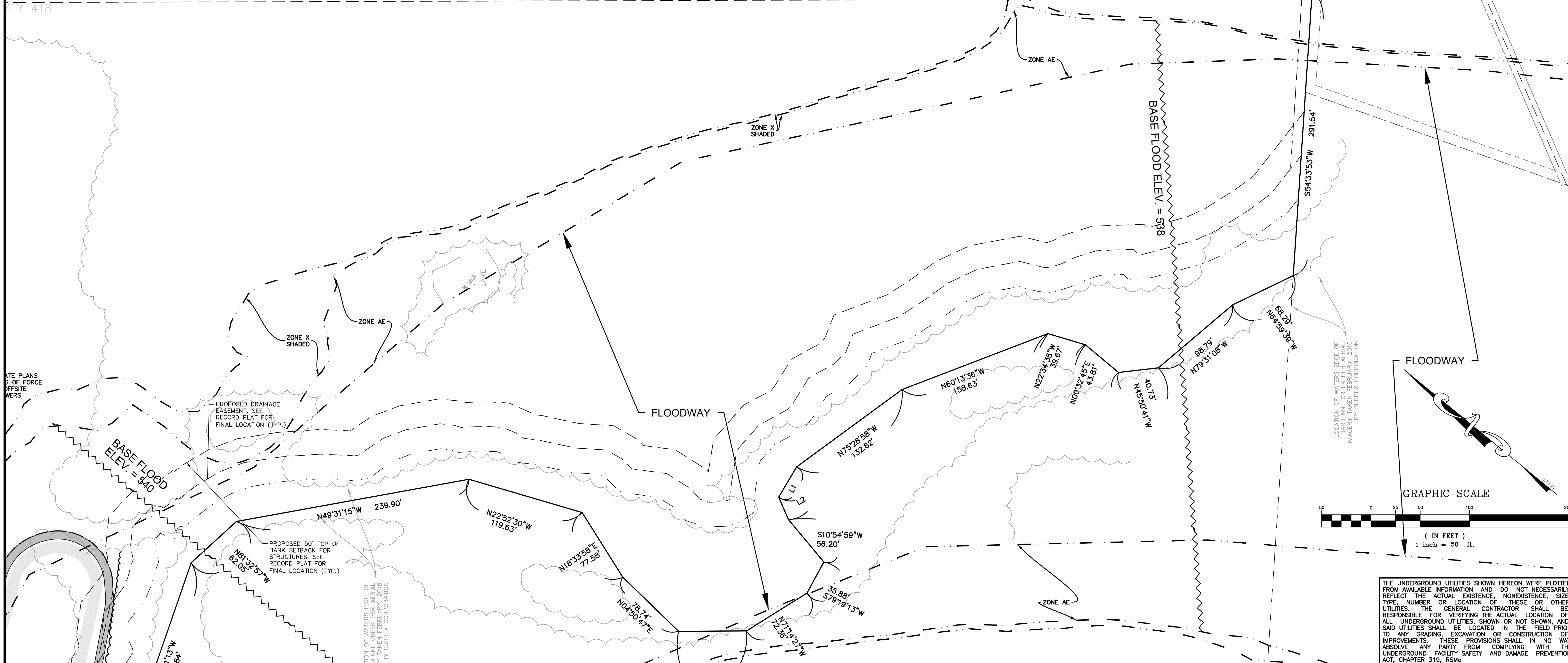
ISSUE	REMARKS/DATE
1	INITIAL SUBMITTAL
2	9-23-20 Rev Duckett Creek Cmmnt
3	20201001 Rev per City/Duckett/PWSD#2
4	20201014 Rev per Duckett
5	20201020 Rev per City Comments
6	20201102 Rev per DCSD Comments
7	20201106 Rev per City Comments



PROJECT TITLE  
**AMBERLEIGH**  
 OF FALLON, MISSOURI

THE **STERLING** CO.  
 ENGINEERS & SURVEYORS  
 5055 New Baumgartner Road  
 St. Louis, Missouri 63129  
 Ph 314-487-0440 Fax 314-487-8944  
 www.sterling-eng-sur.com  
 Corporate Certificate of Authority #001348

STATE OF MISSOURI  
 JASON D HOWELL  
 PROFESSIONAL ENGINEER  
 NUMBER PE-2007002801  
 Date: 5-18-2021  
 Jason D Howell  
 License No. PE 2007002801  
 Professional Engineer



LOMBARDO HOMES OF ST. LOUIS, LLC  
 2299 TECHNOLOGY DRIVE, SUITE 150  
 OF FALLON, MISSOURI 63368  
 Ph. 636-265-2710  
 Fax 636-695-3195

P+Z No. 20-000028  
 City No. 20-003192  
 Date: May 18, 2021  
 Job No. 14-04-136  
 Page No. **4.3**  
 IMP

Drawing name: V:\1404136\Deliverables\Drawings\Improvements\130IMP.dwg Printed on: Aug 27, 2021 - 11:04am Plotted by: jhowell