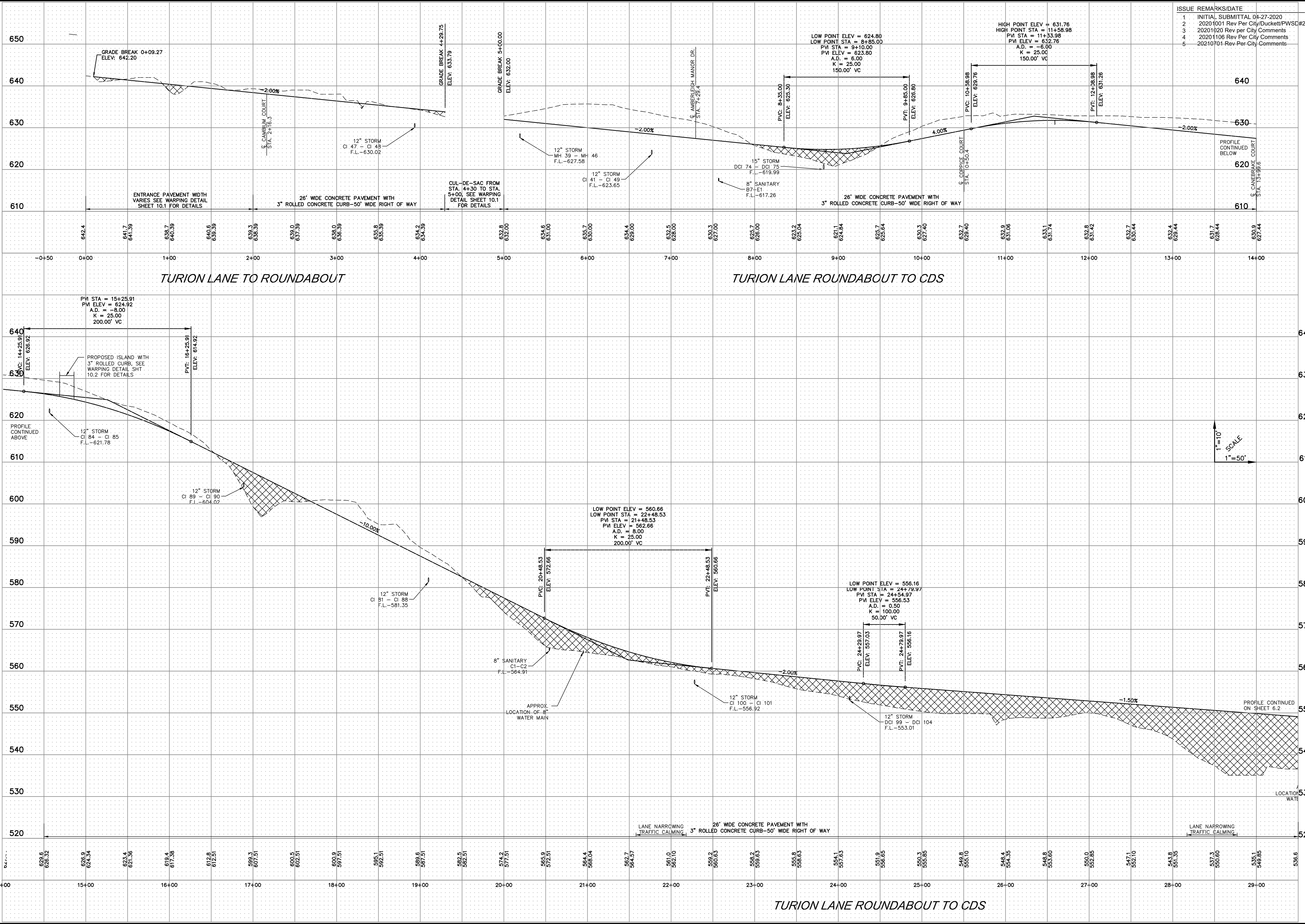


Drawing name: V:\1404136\Drawings\Civil\Howell\1404136\Drawings\Grading\SWPPP\FG Amberleigh.dwg Plotted on: Aug 27, 2021 - 11:15am Plotted by: jhowell



ISSUE	REMARKS/DATE
1	INITIAL SUBMITTAL 04-27-2020
2	20201001 Rev Per City/Duckett/PWSC#2
3	20201020 Rev Per City Comments
4	20201106 Rev Per City Comments
5	202010701 Rev Per City Comments

PROJECT TITLE

AMBERLEIGH
OF FALLON, MISSOURI

THE STERLING CO.
ENGINEERS & SURVEYORS
5055 New Baumgartner Road
St. Louis, Missouri 63129
Ph 314-487-0440 Fax 314-487-8944
www.sterling-eng-sur.com
Corporate Certificate of Authority #001348



Date: 7-1-2021
Jason D Howell
License No. PE 2007002801
Professional Engineer

LOMBARDO HOMES OF ST. LOUIS, LLC
2299 TECHNOLOGY DRIVE, SUITE 150
OF FALLON, MISSOURI 63368
Ph. 636-265-2710
Fax 636-695-3195

STREET PROFILE

P+Z No. 20-00028
City No. 20-003192
Date: July 1, 2021
Job No. 14-04-136

Page No.
6.1
IMP