


ISSUE	REMARKS/DATE
1	INITIAL SUBMITTAL
2	9-23-20 Rev Duck Creek Cmnt
3	20201001 Rev per City/Duckett/PWSD#2
4	20201014 Rev per Duckett
5	20201020 Rev per City Comments
6	20201102 Rev per DCSD Comments
7	20201106 Rev per City Comments

PROJECT TITLE

**AMBERLEIGH**  
OF FALLON, MISSOURI

**THE STERLING CO.**  
ENGINEERS & SURVEYORS  
5055 New Baumgartner Road  
St. Louis, Missouri 63129  
Ph 314-487-0440 Fax 314-487-8944  
www.sterling-eng-survey.com  
Corporate Certificate of Authority #001348

Date: 5-18-2021  
Jason D Howell  
License No. PE 2007002801  
Professional Engineer

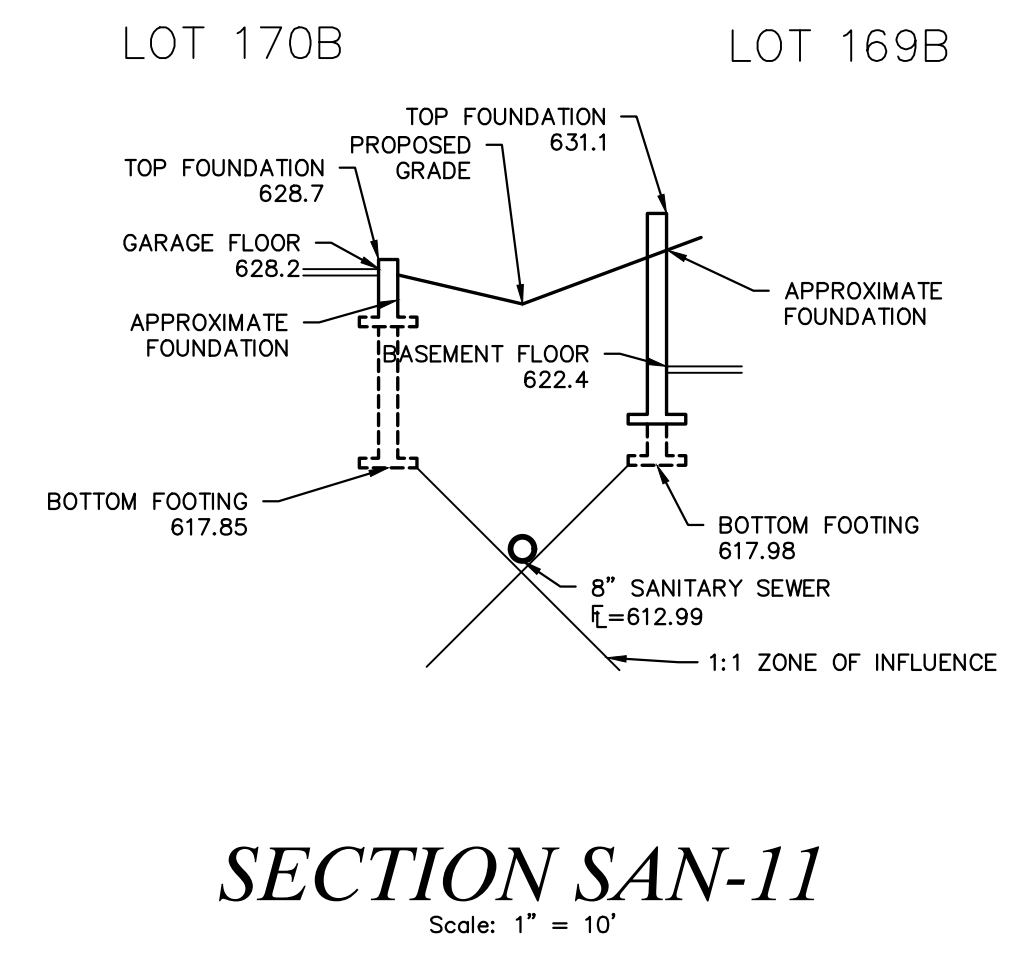
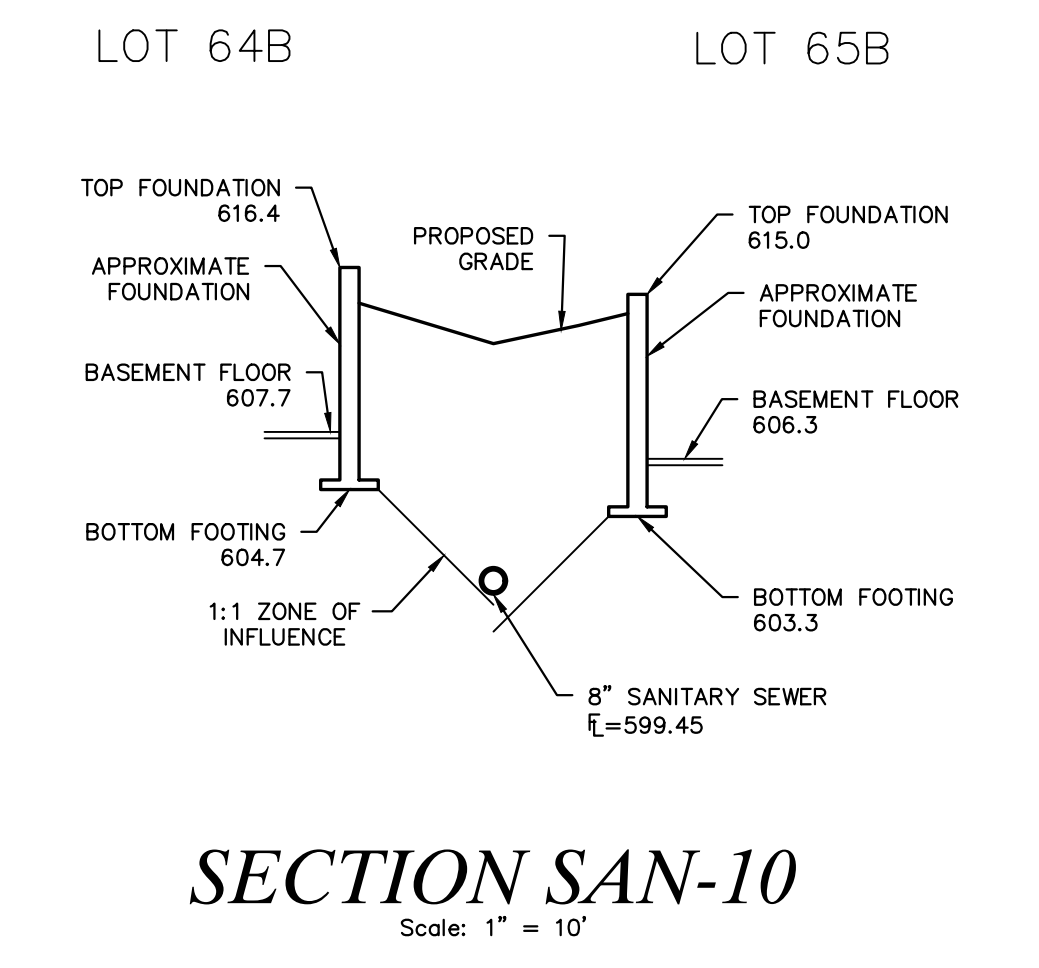
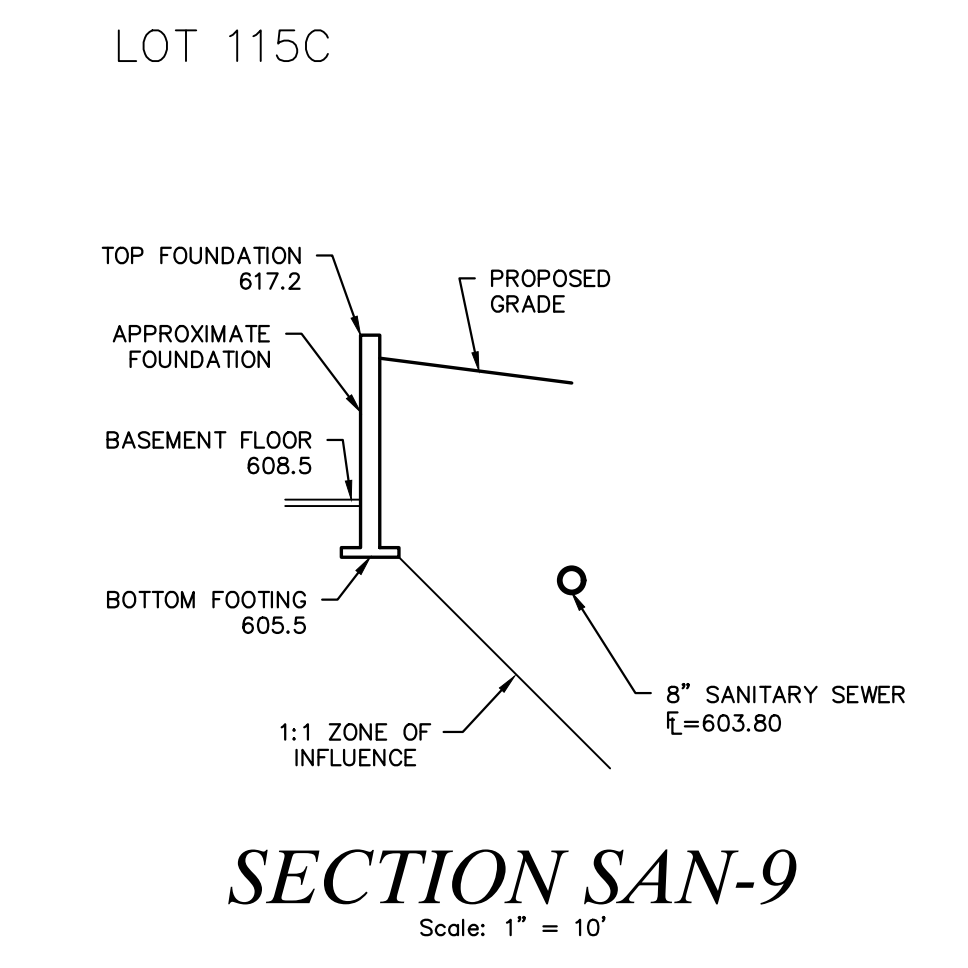
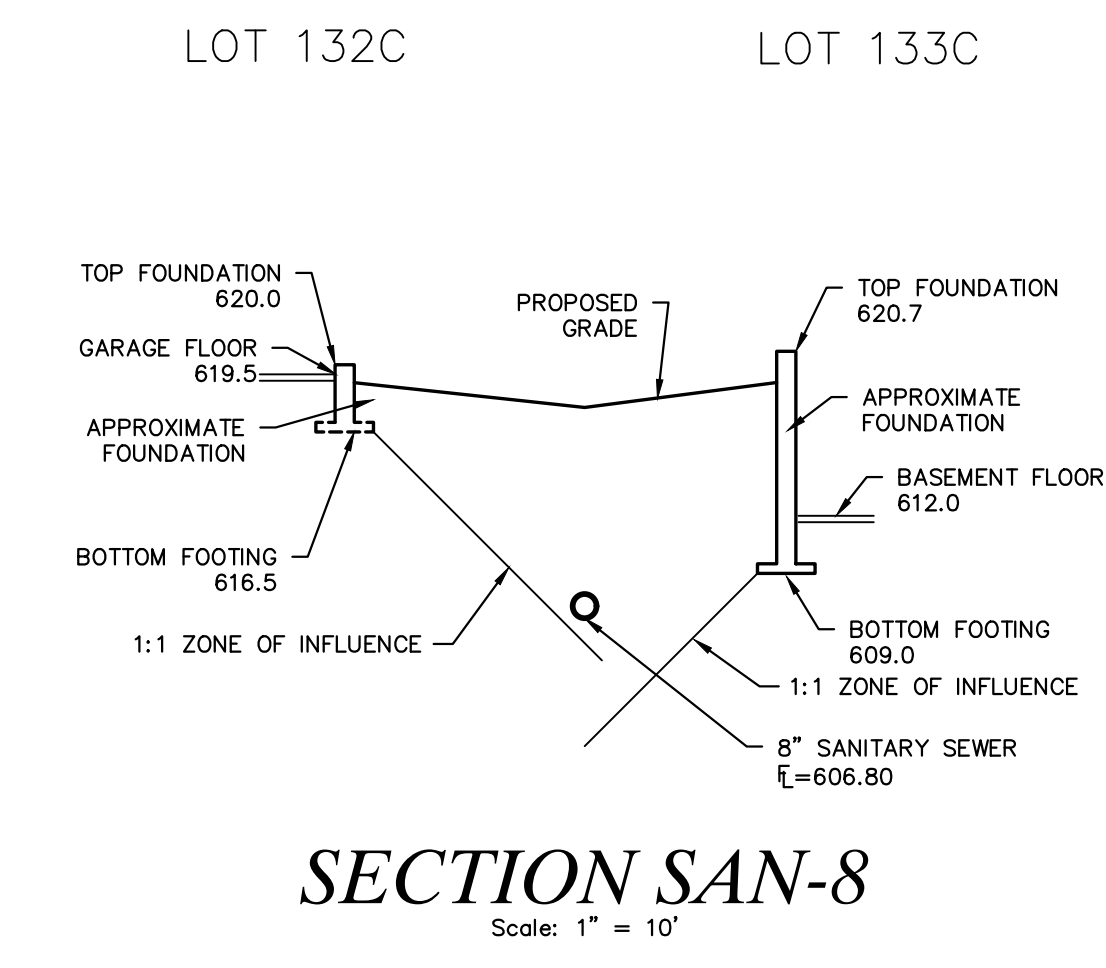
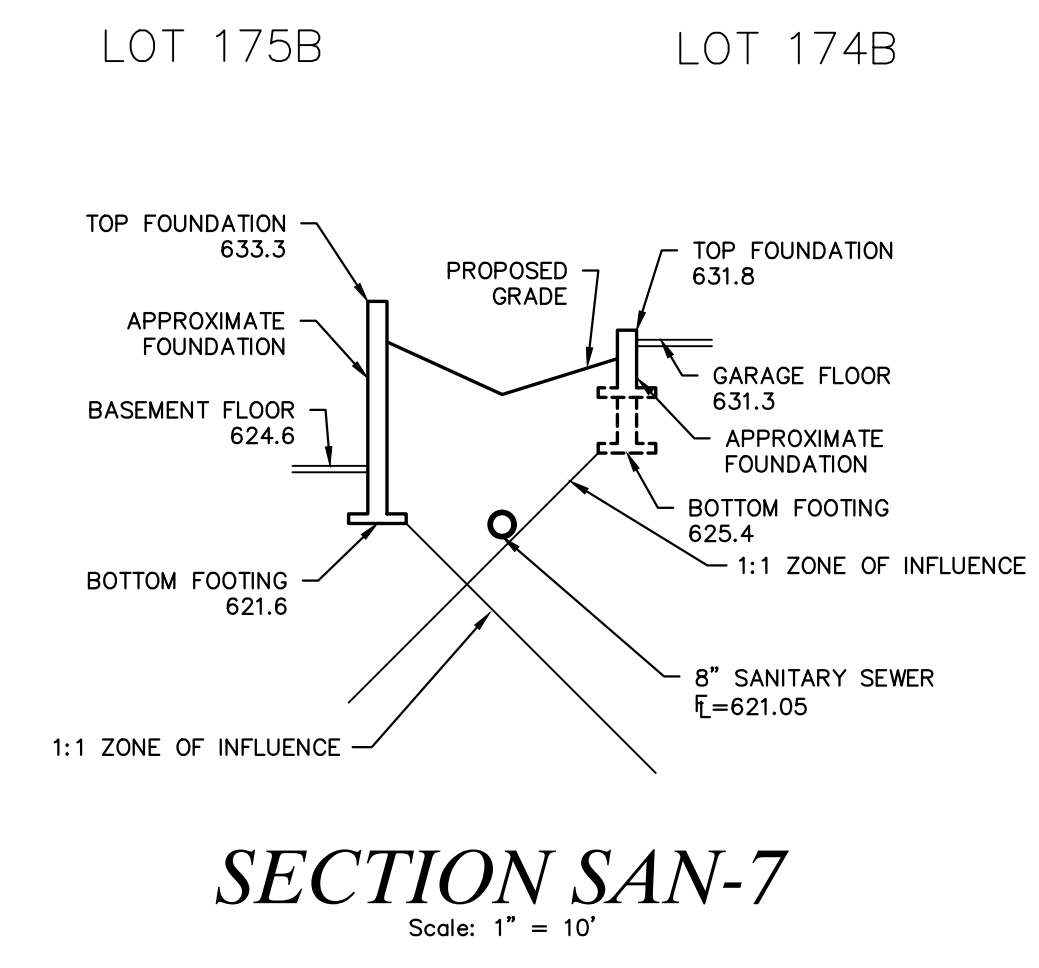
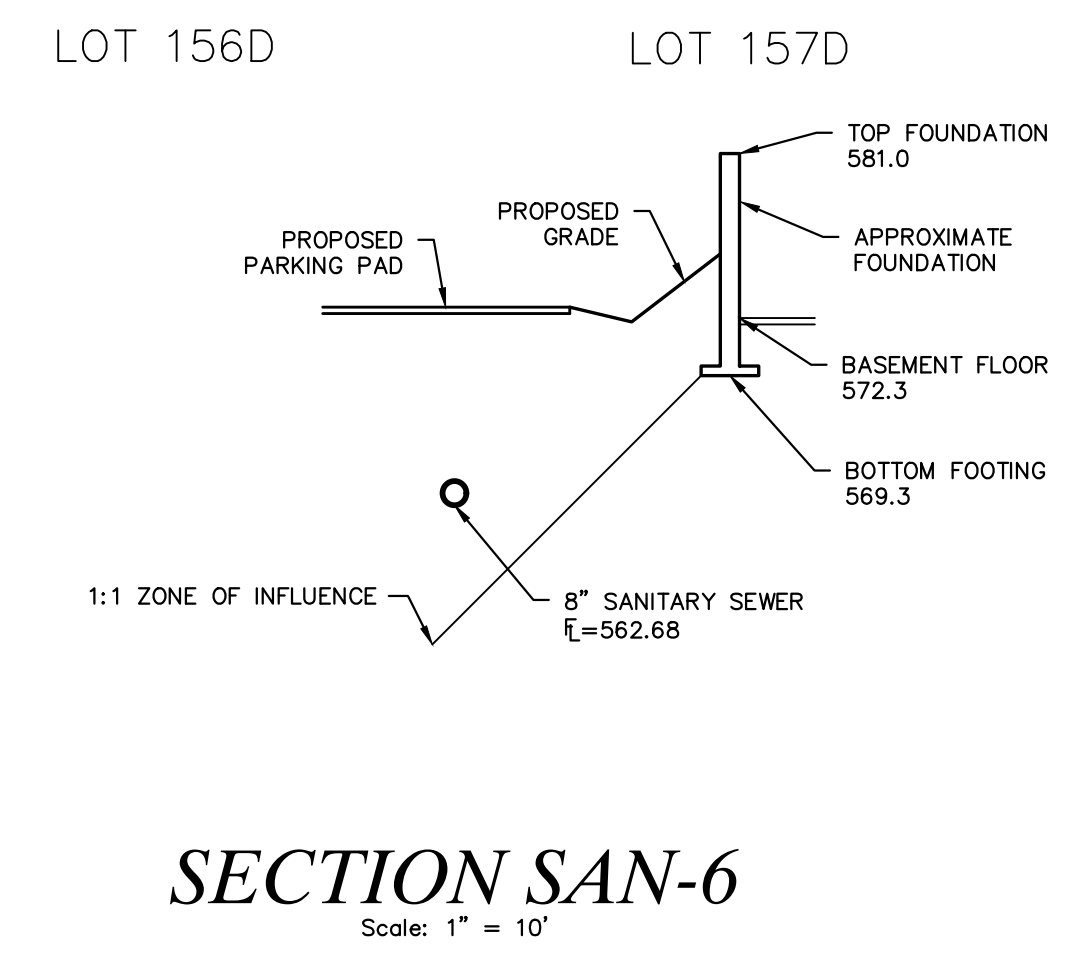
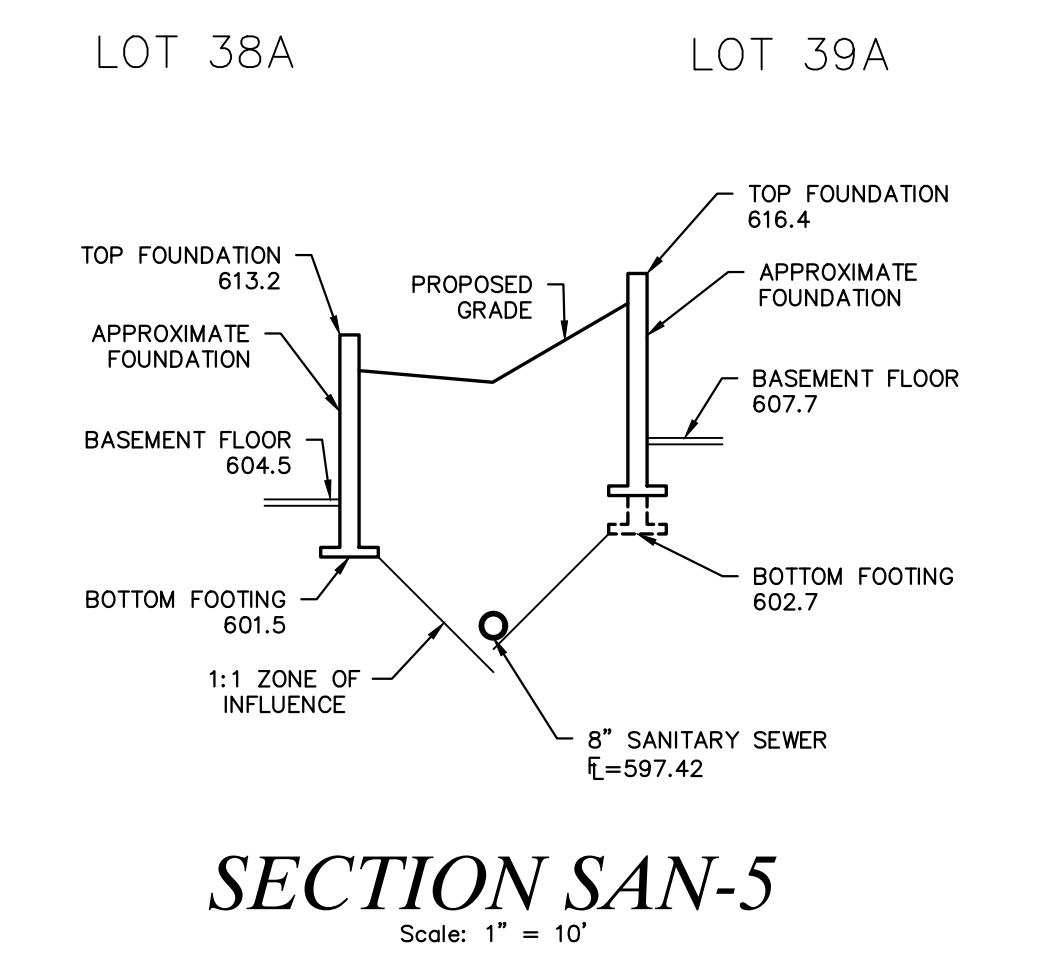
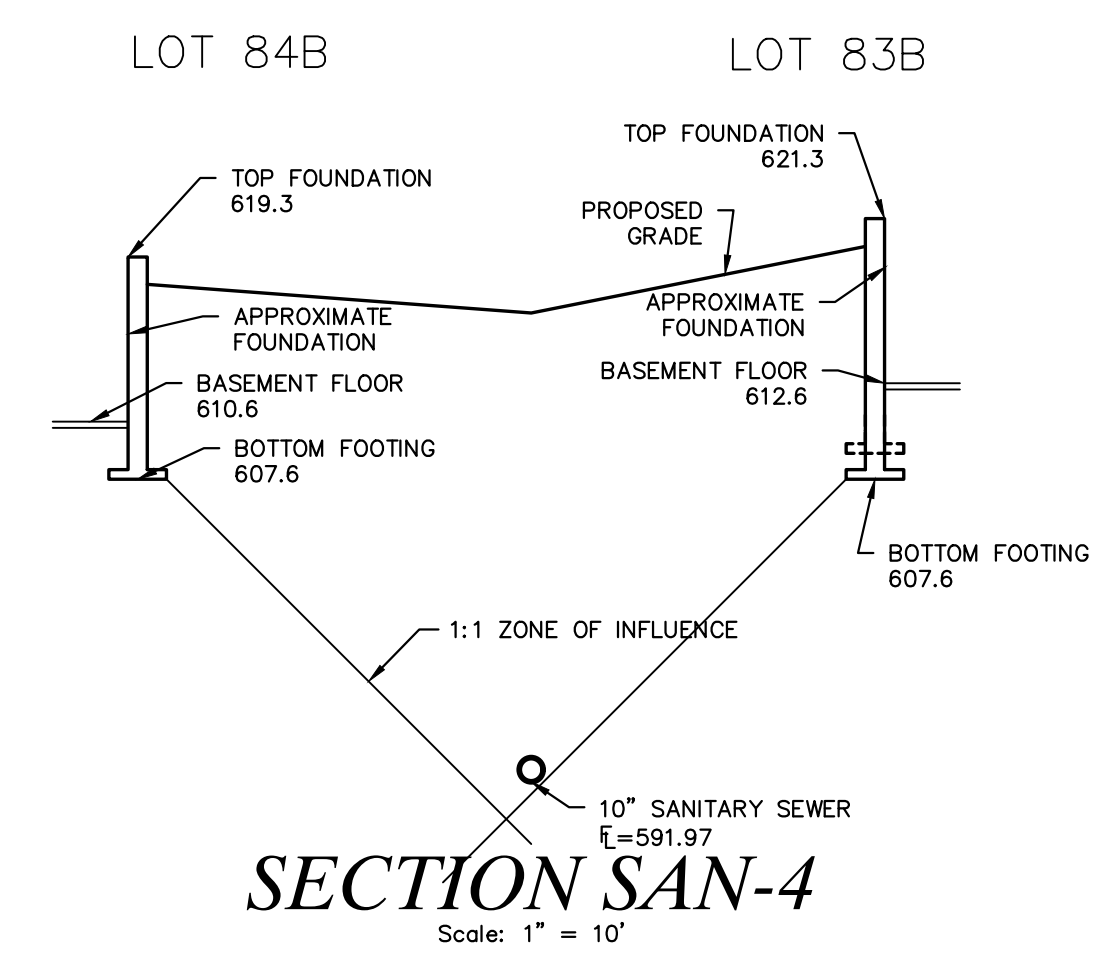
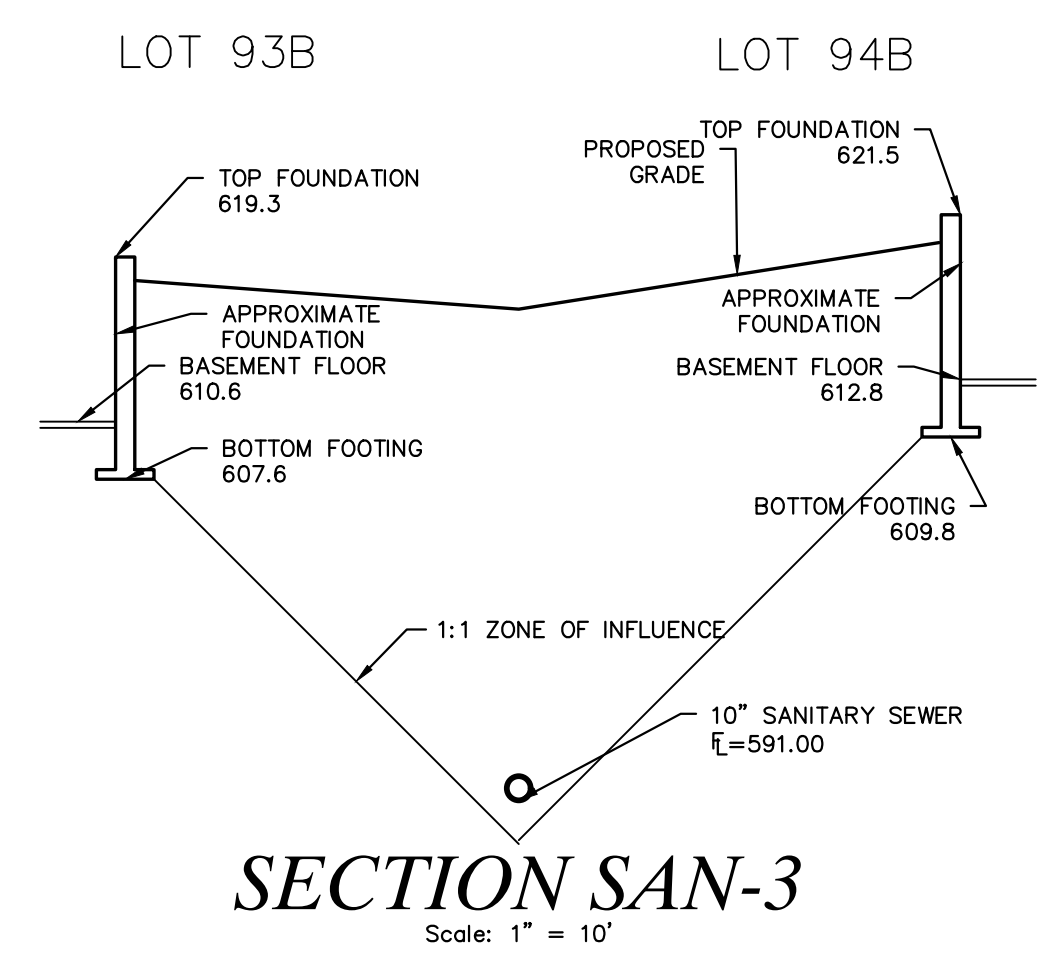
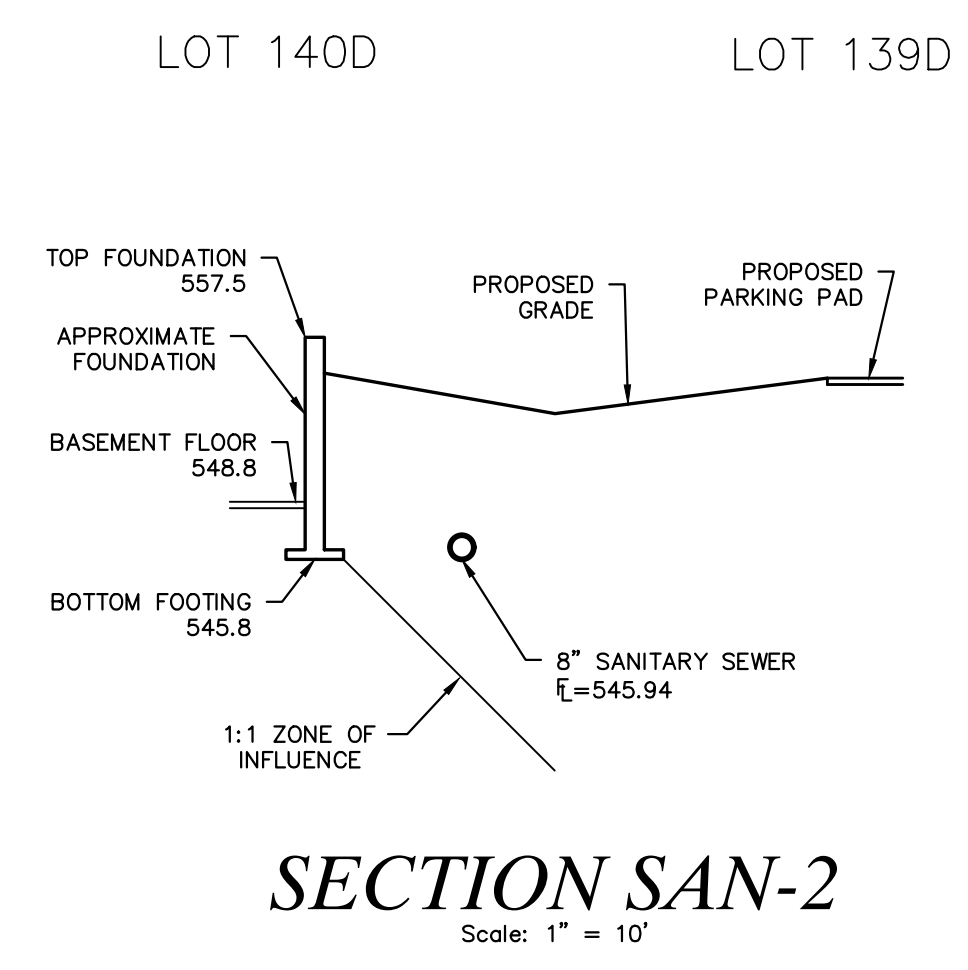
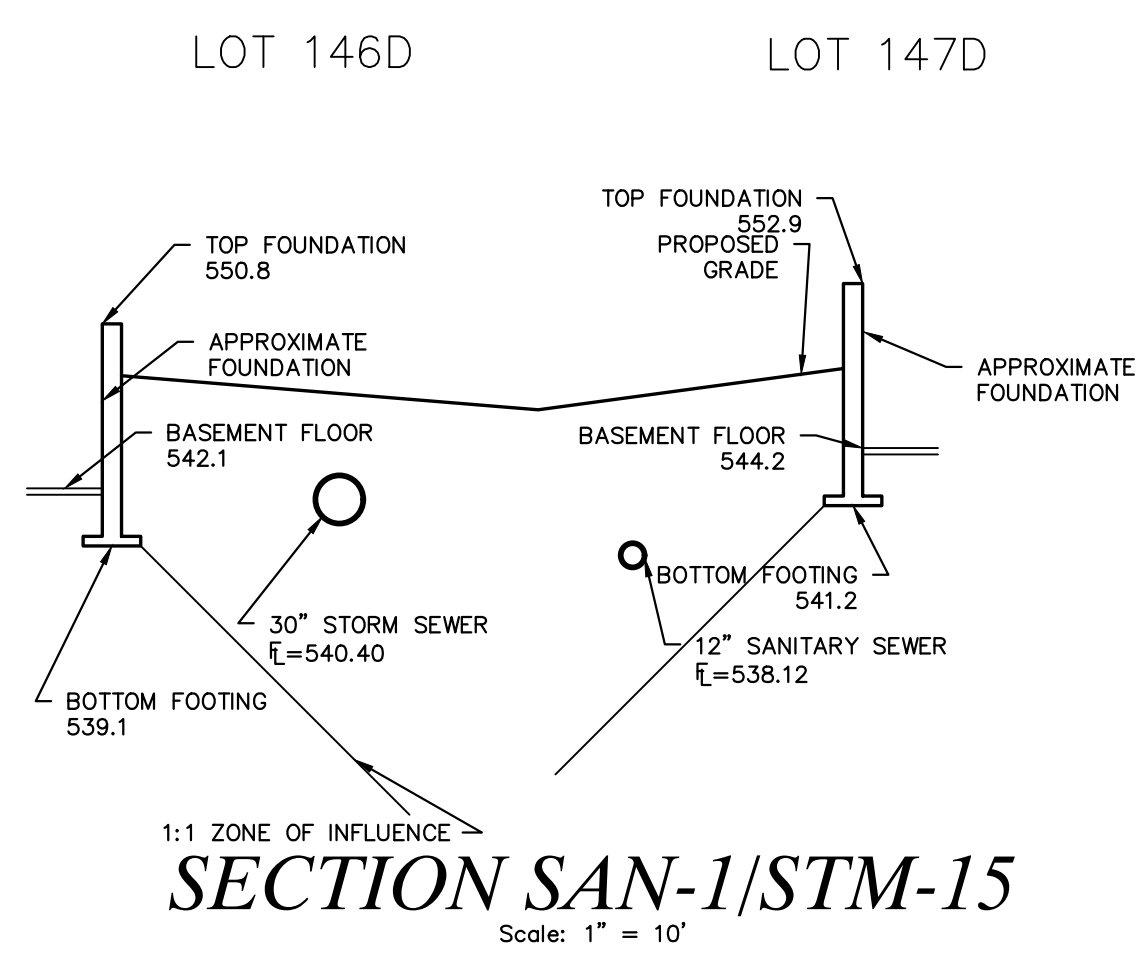


**LOMBARDO HOMES OF ST. LOUIS, LLC**  
2299 TECHNOLOGY DRIVE, SUITE 150  
OF FALLON, MISSOURI 63368  
Ph. 636-265-2710  
Fax 636-695-3195

**ZONE OF INFLUENCE SECTION**

P+Z No. 20-000028  
City No. 20-003192  
Date: May 18, 2021  
Job No. 14-04-136

Page No.  
**8.10**  
IMP



Drawing name: V:\1404136 Dabir CT Howell\1404136\Drawings\Improvements\136IMP.dwg Printed on: Aug 27, 2021 - 1:28pm Plotted by: jhowell