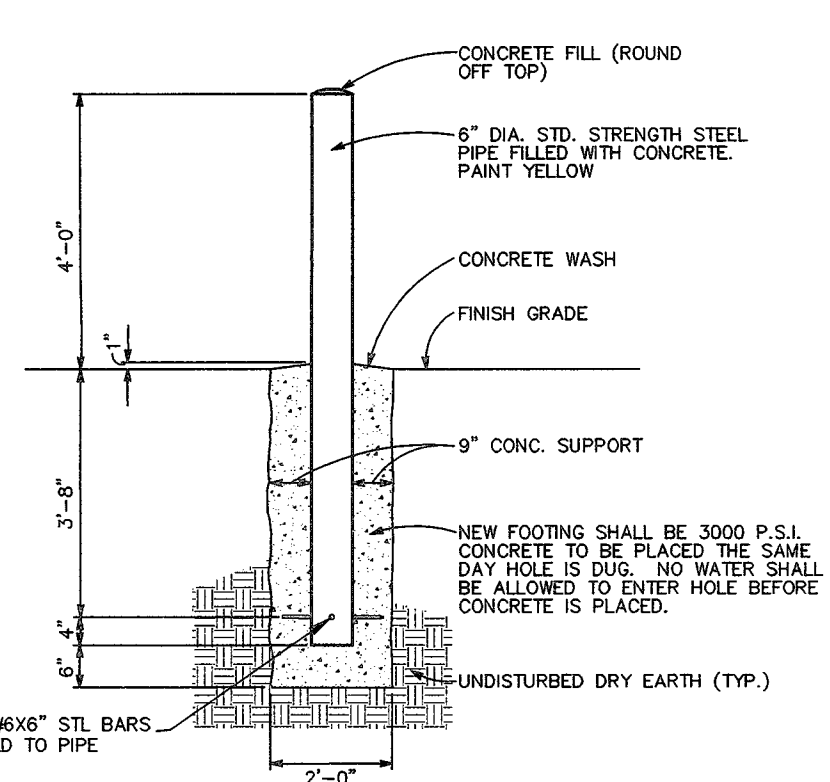
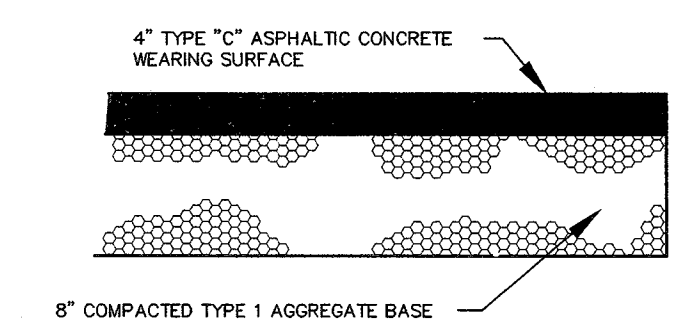


MULTI-USE TRAIL DETAIL
NOT TO SCALE

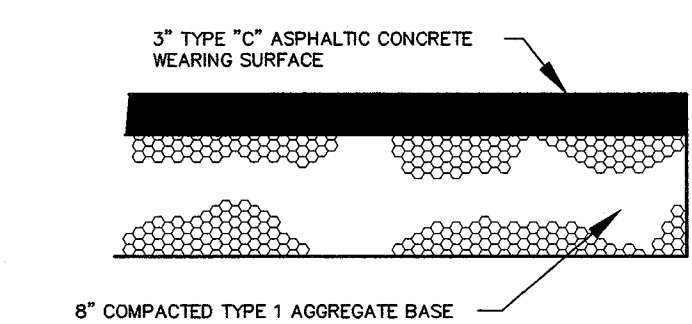
NOTES:
 PROVIDE HANDICAP RAMP WHERE TRAIL INTERSECTS ACCESS DRIVES OR STREETS OR WHERE TRAIL INTERSECTS WITH CURBING (SEE PLAN).
 PROVIDE STRIPING OR A COLORED TEXTURED PAVEMENT THROUGH THE ACCESS DRIVES OR STREETS INTO THE DEVELOPMENT.
 MAXIMUM SLOPE OF THE PATH SHALL NOT EXCEED 5% (UNLESS ROADWAY SLOPE PARALLEL TO RAMP EXCEEDS 5%) AND 2% CROSS SLOPE PER CITY OF OTTAWA SPECIFICATIONS.
 THE TRAIL SHALL BE CONSTRUCTED WITH A CONSISTENT SLOPE WITH VERTICAL CURVES A MINIMUM OF 50' IN LENGTH. AFTER FINAL COMPRESSION, THE SURFACE SHALL BE SMOOTH AND TRUE TO THE ESTABLISHED GRADE. ANY LOW OR DEFECTIVE PLACES SHALL IMMEDIATELY BE REMEDIED BY CUTTING OUT THE COURSE, AT SUCH SPOTS AND REPLACING IT WITH FRESH HOT MIXTURE, WHICH SHALL BE IMMEDIATELY COMPACTED TO CONFORM WITH THE SURROUNDING AREA AND SHALL BE THOROUGHLY BONDED TO IT. THE FINISHED PAVEMENT SHALL BE SET FREE FROM DEPRESSIONS EXCEEDING ONE-EIGHTH INCH AS MEASURED WITH A TEN-FOOT STRAIGHT EDGE PARALLELING THE CENTERLINE OF THE TRAIL.



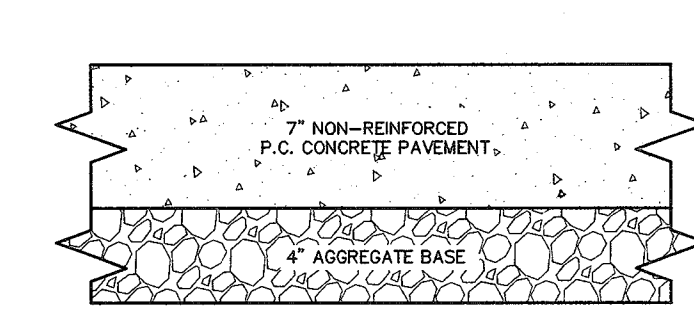
PIPE BOLLARD DETAIL
NOT TO SCALE



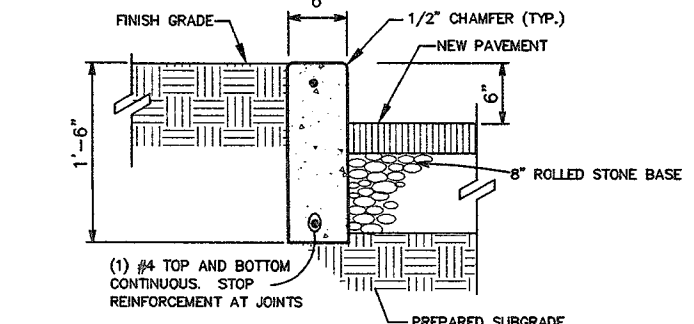
ASPHALT DRIVE AISLE PAVEMENT DETAIL
NOT TO SCALE



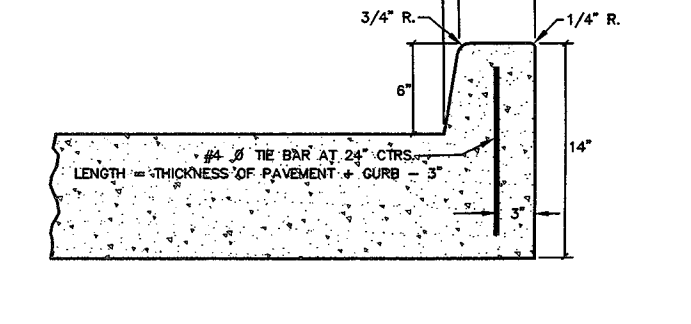
ASPHALT PARKING SPACE PAVEMENT DETAIL
NOT TO SCALE



7" CONCRETE PAVEMENT DETAIL
NOT TO SCALE



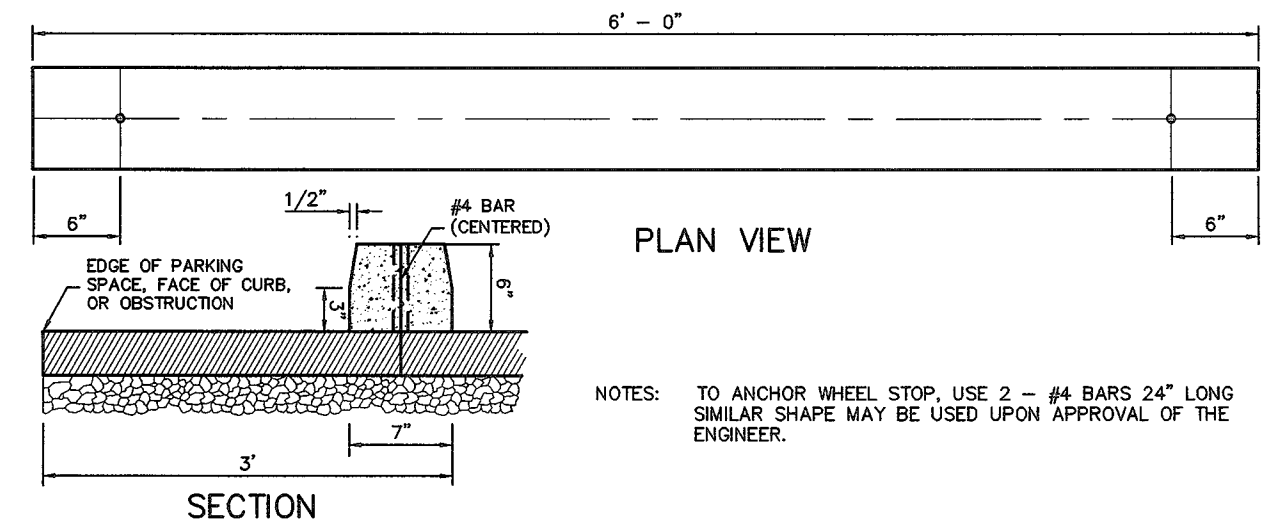
CONCRETE CURB DETAIL
NOT TO SCALE



TYPE "A" INTEGRAL CURB
N.T.S.

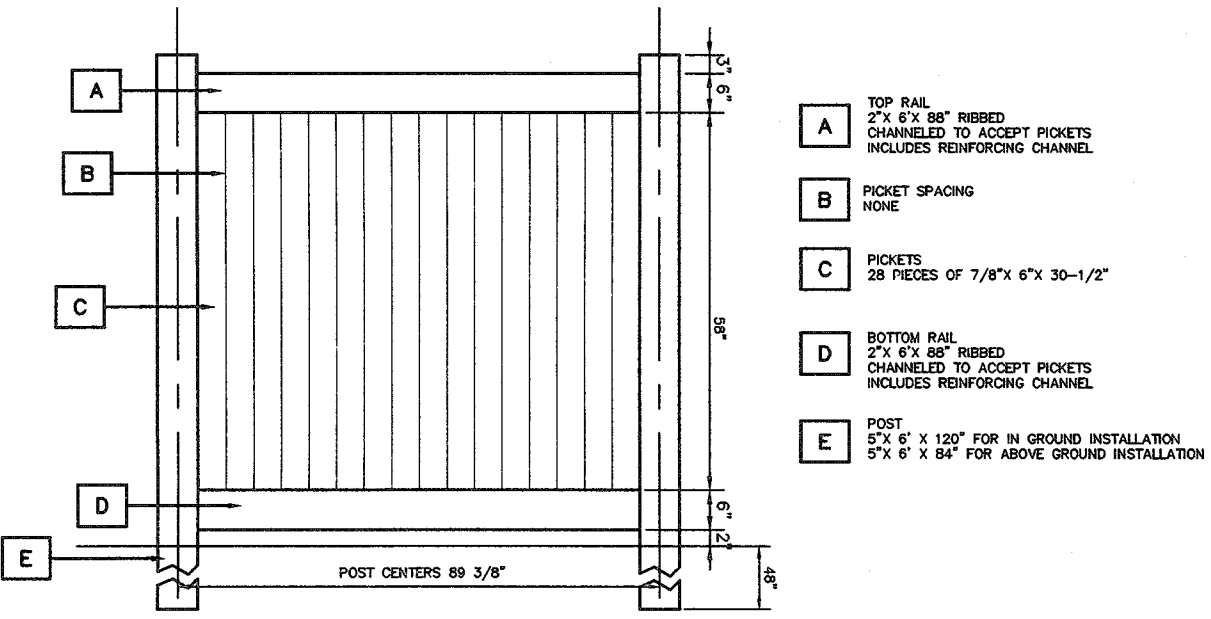
* ALL GRANULAR ROLLED STONE BASE UNDER PROPOSED CONCRETE MUST BE COMPACTED TO 100% OF THE MAXIMUM DENSITY AS DETERMINED BY THE STANDARD PROCTOR TEST AASHTO T-99. CONCRETE COMPRESSIVE STRENGTH SHALL BE 4000 PSI IN 28 DAYS

* ALL GRANULAR ROLLED STONE BASE UNDER PROPOSED CONCRETE MUST BE COMPACTED TO 100% OF THE MAXIMUM DENSITY AS DETERMINED BY THE STANDARD PROCTOR TEST AASHTO T-99. CONCRETE COMPRESSIVE STRENGTH SHALL BE 4000 PSI IN 28 DAYS



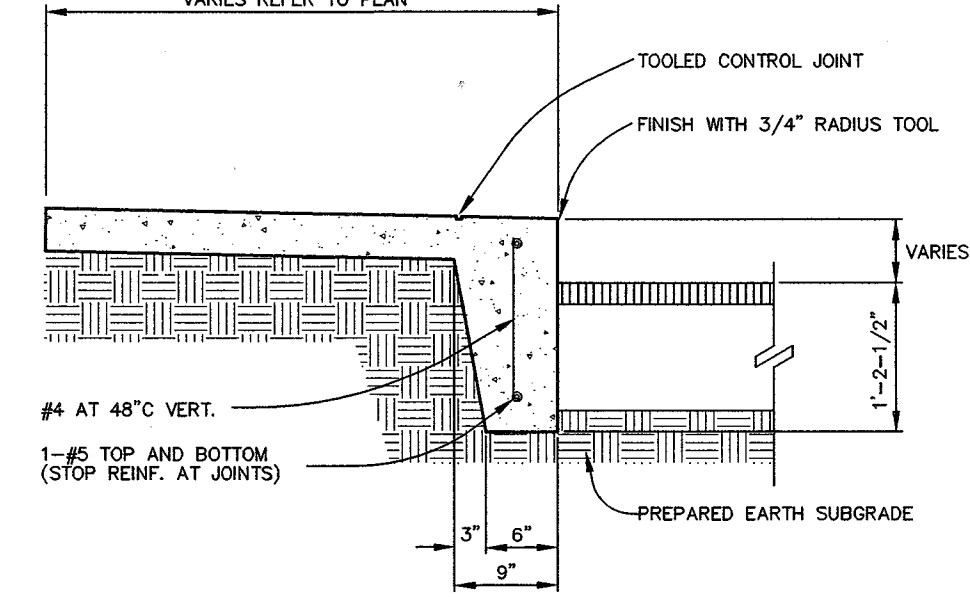
PRECAST CONCRETE WHEELSTOP

NOTES: TO ANCHOR WHEEL STOP, USE 2 - #4 BARS 24" LONG SIMILAR SHAPE MAY BE USED UPON APPROVAL OF THE ENGINEER.



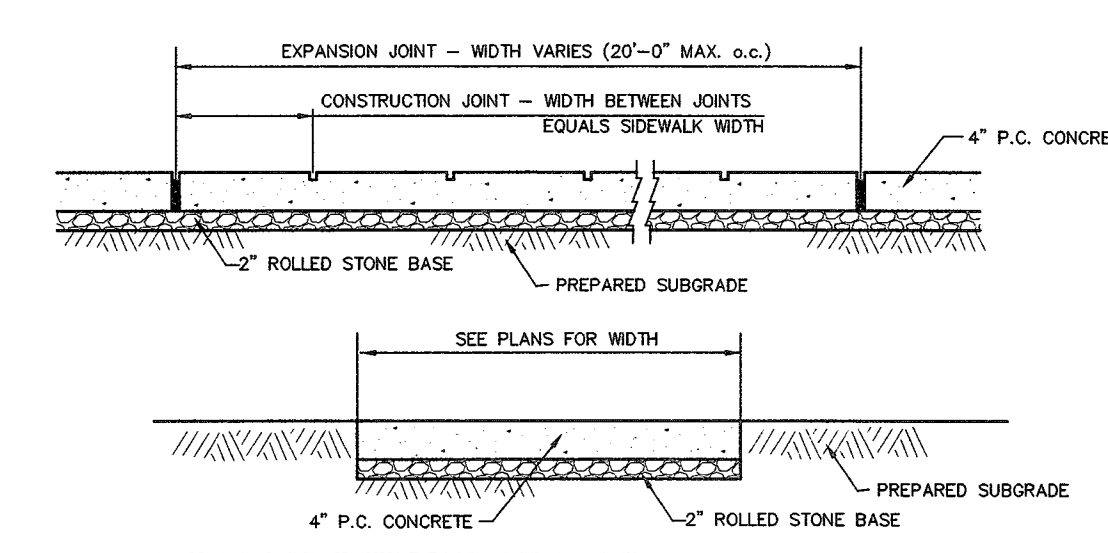
6' HIGH VINYL PRIVACY FENCE
NOT TO SCALE

A TOP RAIL 2" X 6" RIBBED CHANNELS TO ACCOMMODATE PICKETS INCLUDES REINFORCING CHANNEL.
 B POST SPACING
 C PICKETS 28 PIECES OF 7/8" X 30-1/2"
 D BOTTOM RAIL 2" X 6" RIBBED CHANNELS TO ACCOMMODATE PICKETS INCLUDES REINFORCING CHANNEL.
 E POST 2" X 6" X 10' FOR IN GROUND INSTALLATION 5/8" X 6" X 6" FOR ABOVE GROUND INSTALLATION



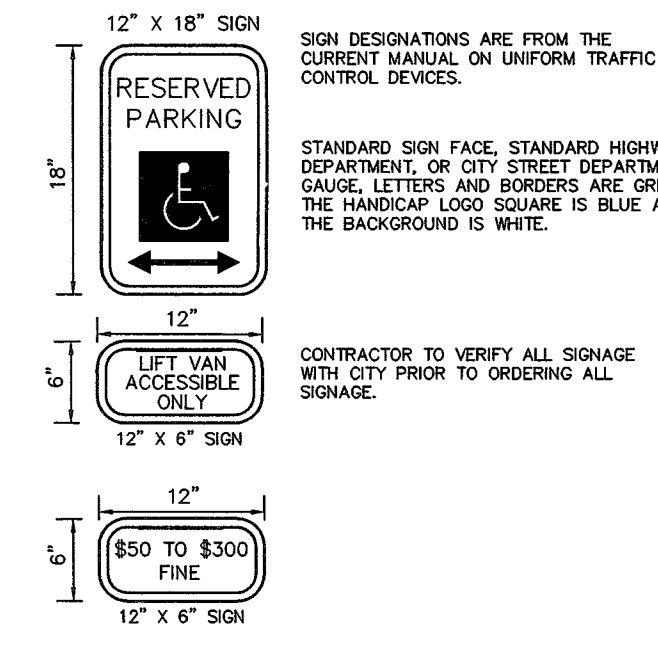
TURNED DOWN CONCRETE WALK
NOT TO SCALE

PROVIDE 1/2" PREFORMED EXPANSION JOINT FILLER AT 60° CENTERS PROVIDE TOOLED CONTRACTION JOINTS AT 10' O.C.



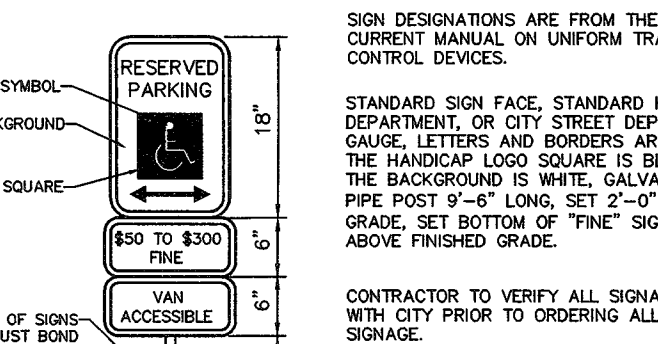
CONCRETE SIDEWALK DETAIL
NOT TO SCALE

* ALL GRANULAR ROLLED STONE BASE UNDER PROPOSED CONCRETE MUST BE COMPACTED TO 100% OF THE MAXIMUM DENSITY AS DETERMINED BY THE STANDARD PROCTOR TEST AASHTO T-99. CONCRETE COMPRESSIVE STRENGTH SHALL BE 4000 PSI IN 28 DAYS



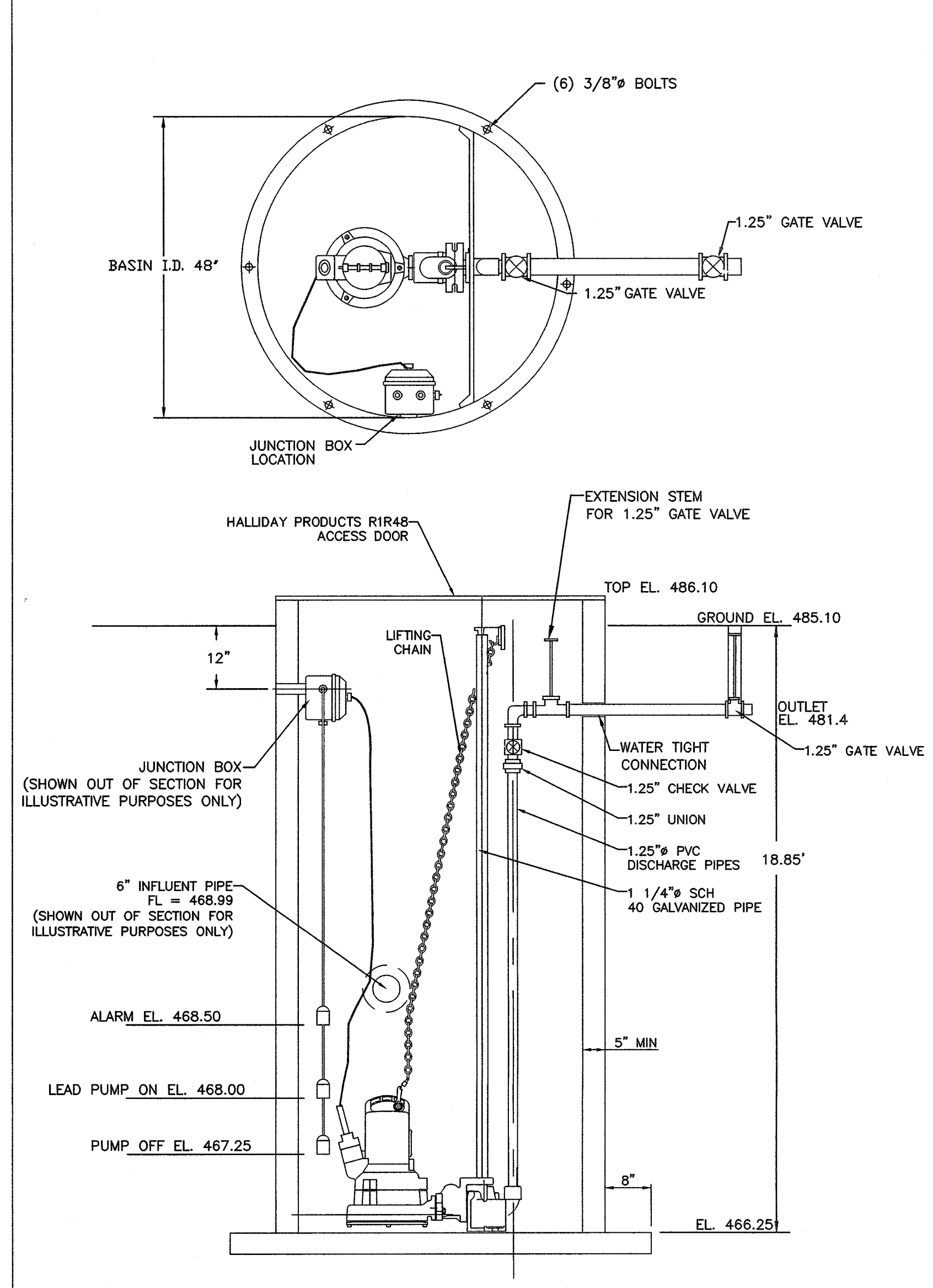
ACCESSIBLE VAN PARKING SIGN
NOT TO SCALE

SIGN DESIGNATIONS ARE FROM THE CURRENT MANUAL ON UNIFORM TRAFFIC CONTROL DEVICES.
 STANDARD SIGN FACE, STANDARD HIGHWAY DEPARTMENT, OR CITY STREET DEPARTMENT GAUGE, LETTERS AND BORDERS ARE GREEN. THE HANDICAP LOGO SQUARE IS BLUE AND THE BACKGROUND IS WHITE.
 CONTRACTOR TO VERIFY ALL SIGNAGE WITH CITY PRIOR TO ORDERING ALL SIGNAGE.



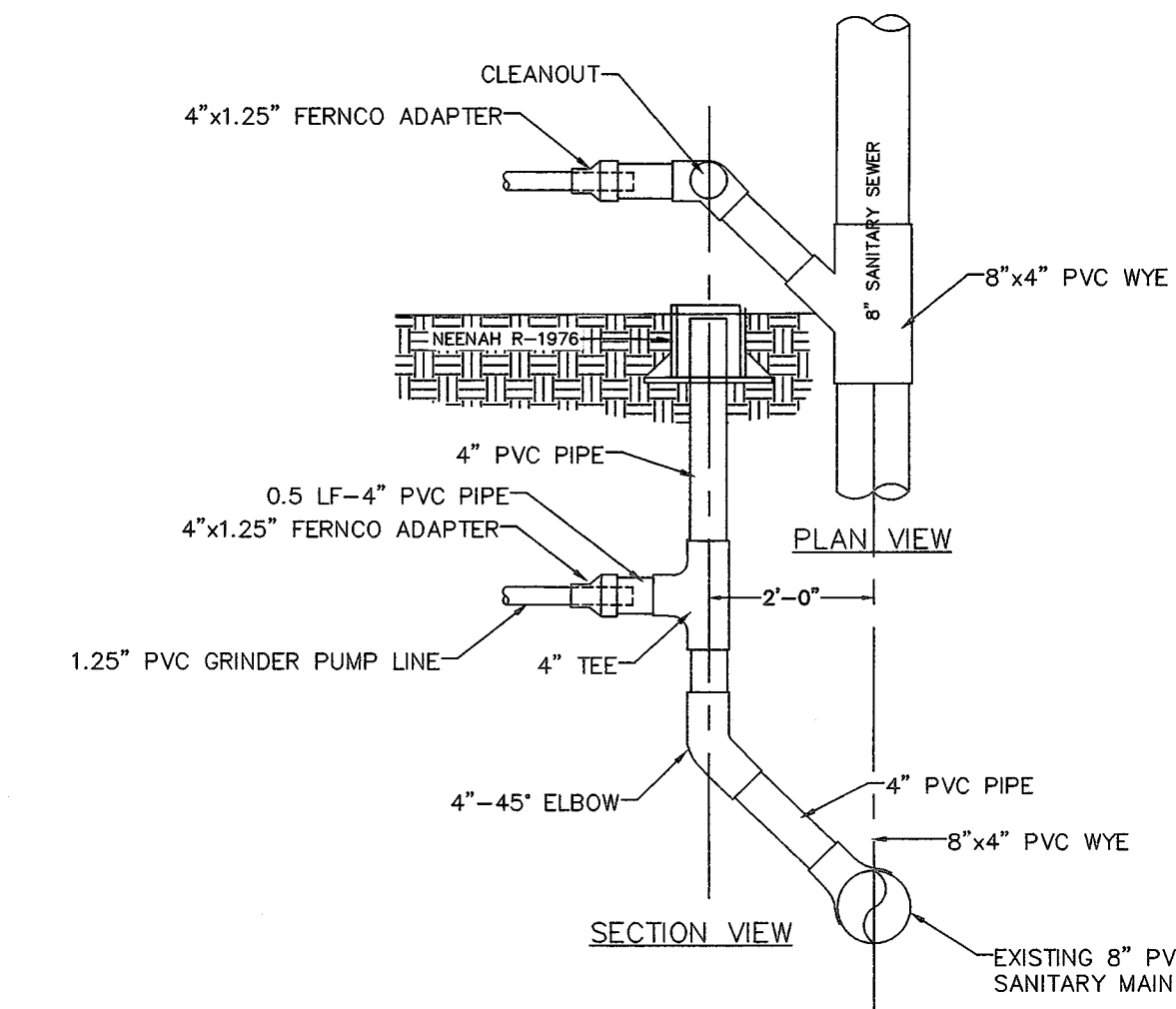
ACCESSIBLE CAR PARKING SIGN
NOT TO SCALE

SIGN DESIGNATIONS ARE FROM THE CURRENT MANUAL ON UNIFORM TRAFFIC CONTROL DEVICES.
 STANDARD SIGN FACE, STANDARD HIGHWAY DEPARTMENT, OR CITY STREET DEPARTMENT GAUGE, LETTERS AND BORDERS ARE GREEN. THE HANDICAP LOGO SQUARE IS BLUE AND THE BACKGROUND IS WHITE. GALVANIZED PIPE POST 5'-4" LONG, SET 2'-0" INTO GRADE. SET BOTTOM OF "FINE" SIGN 5'-0" ABOVE FINISHED GRADE.
 CONTRACTOR TO VERIFY ALL SIGNAGE WITH CITY PRIOR TO ORDERING ALL SIGNAGE.

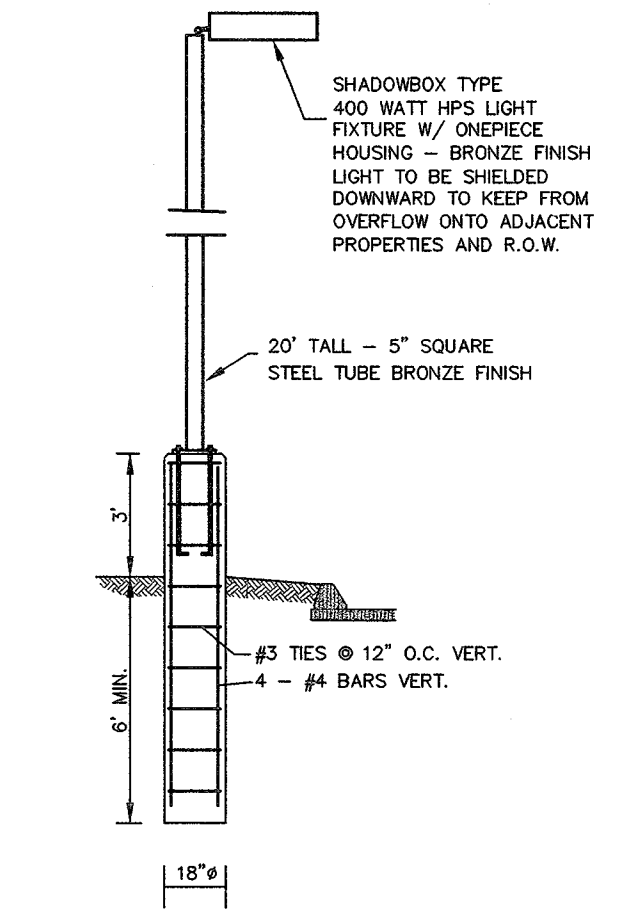


GRINDER PUMP STATION A

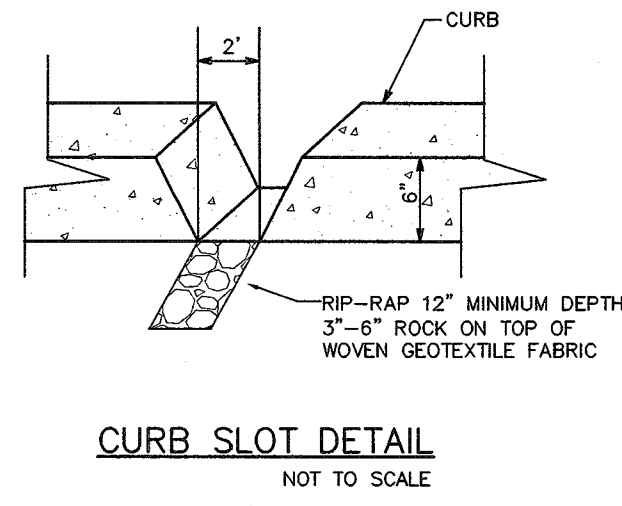
NOTES:
 1) DIMENSIONS IN INCHES.
 2) COMBINATION AUDIBLE AND VISUAL ALARM TO BE INSTALLED WITH CONTROL PANEL ADJACENT TO THE WET WELL.
 3) PUMP TO BE ABS PIRANHA S10/4W 60 HZ SINGLE PHASE 110 VOLT.



GRINDER PUMP LINE/LATERAL CONNECTION TO GRAVITY SEWER
NOT TO SCALE

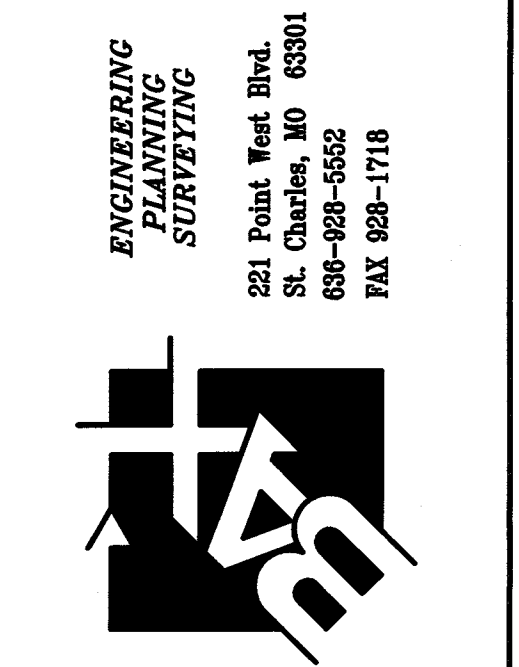


LIGHT POLE & BASE
NOT TO SCALE



CURB SLOT DETAIL
NOT TO SCALE

PROJECT TITLE:
 SCCAD BASE 18
 Bax Project #95-7632G



DISCLAIMER OF RESPONSIBILITY
 I hereby specify that the documents intended to be authorized by my seal are limited to this sheet, and I hereby disclaim any responsibility for all other drawings, specifications, estimates, reports or other documents or instruments relating to or intended to be used for any part of the architectural or engineering work shown on this sheet.
 STATE OF MISSOURI
 LARRY D. WALKER
 PROFESSIONAL ENGINEER
 08/15/17
 Copyright 2017
 Box Engineering Company, Inc.
 Engineering Authority No. 000655
 Surveying Authority No. 000144
 All Rights Reserved

REVISIONS

NO.	DATE	REVISION
8-15-17		CITY COMMENTS

Developer / Owner:
 ST. CHARLES COUNTY AMBULANCE DISTRICT
 4169 OLD MILL PARKWAY
 ST. PETERS, MISSOURI 63376
 CONSTRUCTION DETAILS

P+Z No. #04-16.02.01
 City No. #17-005139