

LEGEND
 I.D. - NOMINAL PIPE SIZE
 O.D. - OUTSIDE DIAMETER OF PIPE
 H - COVER ABOVE TOP OF PIPE
 A - EMBEDDED BELOW PIPE (SEE TABLE)

TABLE EMBEDDED TYPES BELOW PIPE

MIN. SOIL	A	B	C
27" & SMALLER	3"	3"	6"

GRANULAR BEDDING SHALL BE CRUSHED ROCK OR PEA GRAVEL WITH NOT LESS THAN 95% PASSING 1/2" (90% PASSING 3/4" FOR 30" AND LARGER PIPES) AND NOT LESS THAN 95% RETAINED ON A #4; TO BE PLACED IN NOT MORE THAN 6" LAYERS AND COMPACTED TO 95% MAXIMUM DENSITY AS DETERMINED BY A.S.T.M. D698, OR GRADED AGGREGATE. GRANULAR BACK FILL SHALL BE FINELY DIVIDED JOB EXCAVATED MATERIAL FREE FROM DEBRIS, ORGANIC MATERIAL AND STONES, HAND PLACED IN UNIFORM LAYERS NOT MORE THAN 6" THICK, AND TAMPED AROUND CONDUIT PIPE. GRANULAR BACK FILL MATERIAL MAY BE SUBSTITUTED FOR ALL OR PART OF TAMPED BACK FILL.

JERCOCK BACK FILL SHALL BE AS REQUIRED IN THE "LAYING AND BACK FILL" SECTION OF THE DETAILED SPECIFICATIONS.

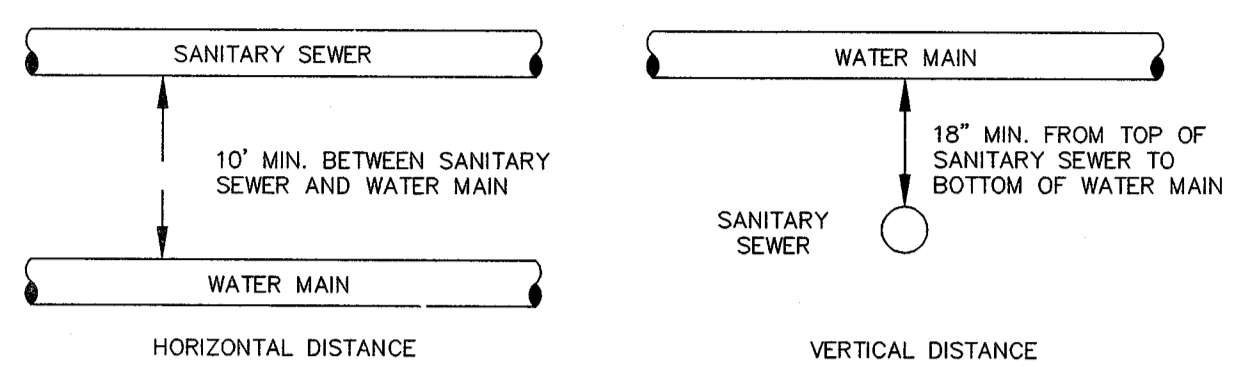
EMBED THE TYPE OF EMBEDDED TO BE USED SHALL BE AS SPECIFIED IN THE PLANS AND SPECIFICATIONS.

TRACER WIRE REQUIRED ON ALL WATER MAINS

WATER MAIN EMBEDDED
NOT TO SCALE

CITY OF O'FALLON
 ENGINEERING DEPARTMENT
 O'FALLON, MISSOURI

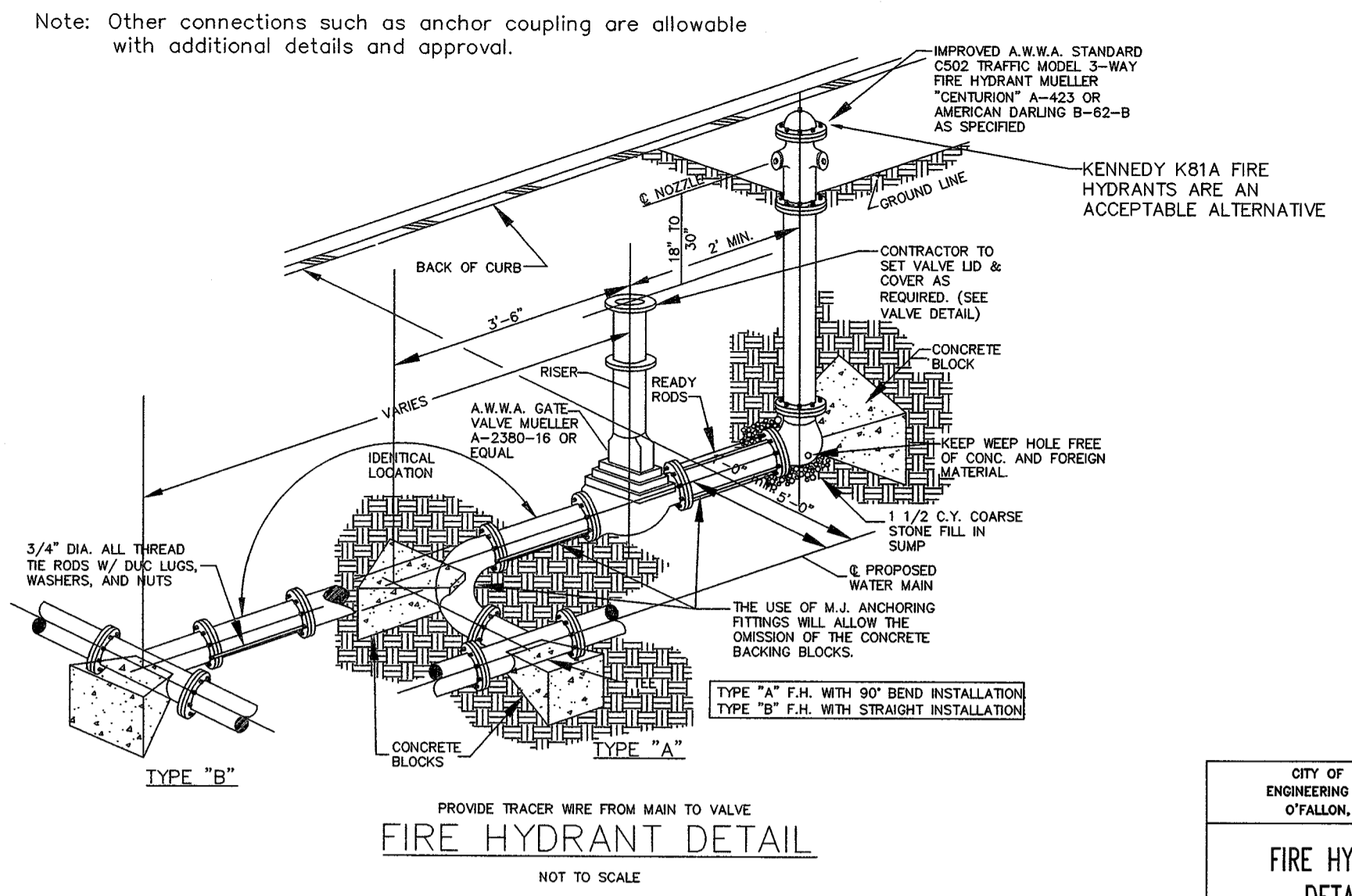
WATER MAIN EMBEDDED



TYPICAL WATER AND SEWER SEPARATION
NOT TO SCALE

CITY OF O'FALLON
 ENGINEERING DEPARTMENT
 O'FALLON, MISSOURI

WATER AND SEWER SEPARATION DETAIL



FIRE HYDRANT DETAIL
NOT TO SCALE

CITY OF O'FALLON
 ENGINEERING DEPARTMENT
 O'FALLON, MISSOURI

FIRE HYDRANT DETAILS

PROJECT TITLE:
 SCCAD BASE 18

Bax Project #95-7632G

ENGINEERING
 SURVEYING
 SURVEYING

221 Point West Blvd.
 St. Charles, MO 63301
 636-928-5552
 FAX 636-928-1716

REFERENCE DRAWINGS ONLY

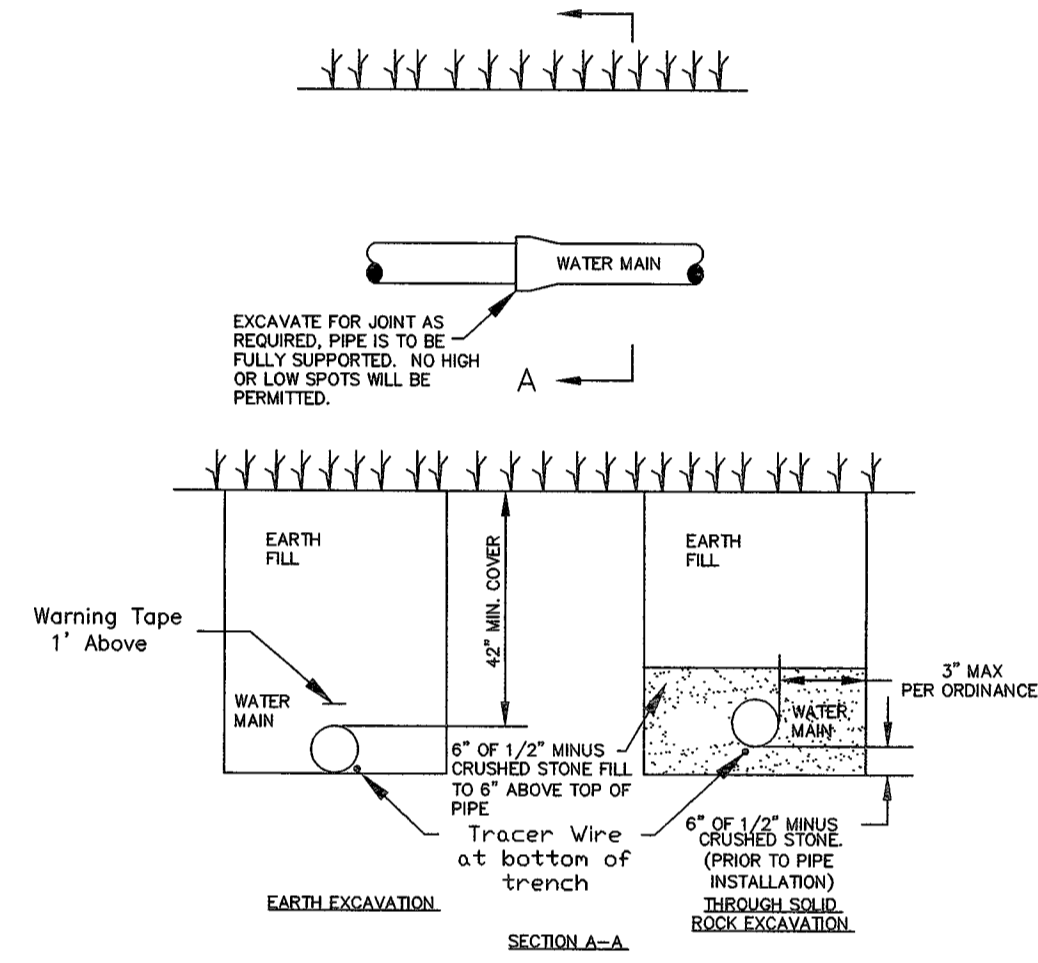
REVISIONS

NO.	DATE	REVISION
8-15-17		CITY COMMENTS

Developer / Owner:
 ST. CHARLES COUNTY AMBULANCE DISTRICT
 4169 OLD MILL PARKWAY
 ST. PETERS, MISSOURI 63376

WATER DETAILS

P+Z No. #04-16.02.01
 City No. #17-005139
 Page No. 16 of 20

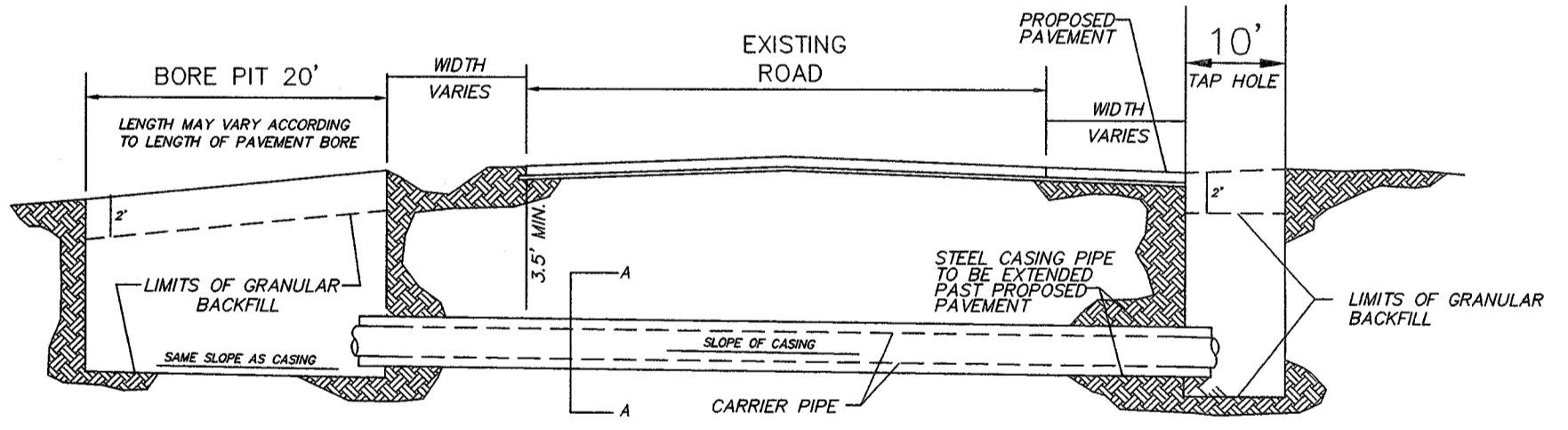


TYPICAL WATER MAIN INSTALLATION DETAILS
NOT TO SCALE

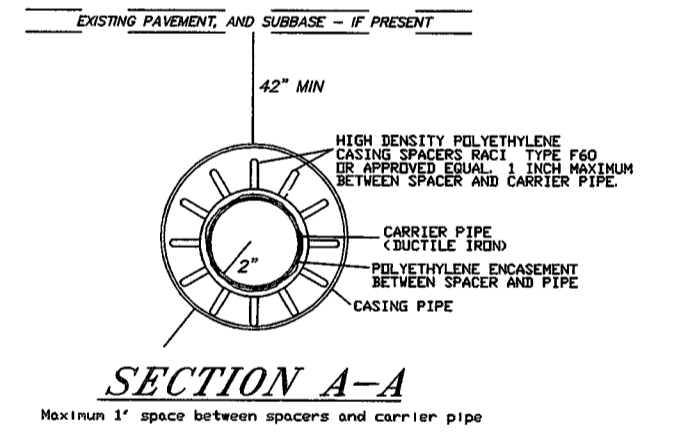
CITY OF O'FALLON
 ENGINEERING DEPARTMENT
 O'FALLON, MISSOURI

WATER MAIN INSTALLATION DETAIL

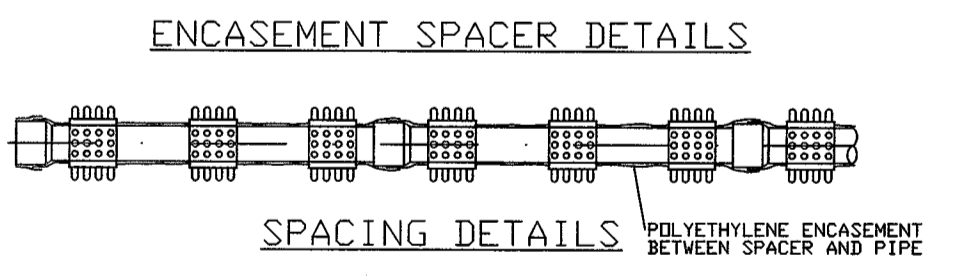
Ductile Iron Pipe installation shall follow the Ductile Iron Research Association (DIPRA) guide line.
 The Installation of PVC Pipe shall follow the Uni-Bell PVC Pipe Association Handbook of PVC Design and Construction.



BORE DETAIL



SECTION A-A
 Maximum 1" space between spacers and carrier pipe



BORING NOTES

- DO NOT SCALE DRAWING. FOLLOW DIMENSIONS.
- INSTALLATION OF THE CASING AND CARRIER PIPES SHALL MEET THE REQUIREMENTS FOR THE CITY OF O'FALLON SPECIFICATIONS.
- ALL JOINTS IN THE CASING PIPE SHALL BE WELDED.
- THE PIPE TO BE PLACED IN THE BORE HOLE SHALL BE CAST-IRON PIPE EXCEPT AS REQUIRED ON THE PLANS.
- STEEL CASING PIPE USED IN THE INSTALLATION OF WATER OR SEWER LINE AND CONDUITS SHALL HAVE A MINIMUM YIELD STRENGTH OF 35,000 P.S.I.
- CARRIER PIPE SHALL BE 8" DIA. D.I.P.
- CASING PIPE SHALL BE 18" DIA. STEEL, (0.281" WALL THICKNESS).
- NOTE: EXISTING FACILITIES ARE TO REMAIN IN USE AT ALL TIMES. IT IS THE RESPONSIBILITY OF THE CONTRACTOR TO LOCATE ALL SERVICE LINES AND UTILITIES PRIOR TO CONSTRUCTION.
- RESTRAINING JOINTS SHALL BE USED ON THE CARRIER PIPE.
- DESIGNER SHALL SUBMIT CARRIER PIPE AND CASING PIPE SIZE AND COMBINATION FOR REVIEW AND APPROVAL.