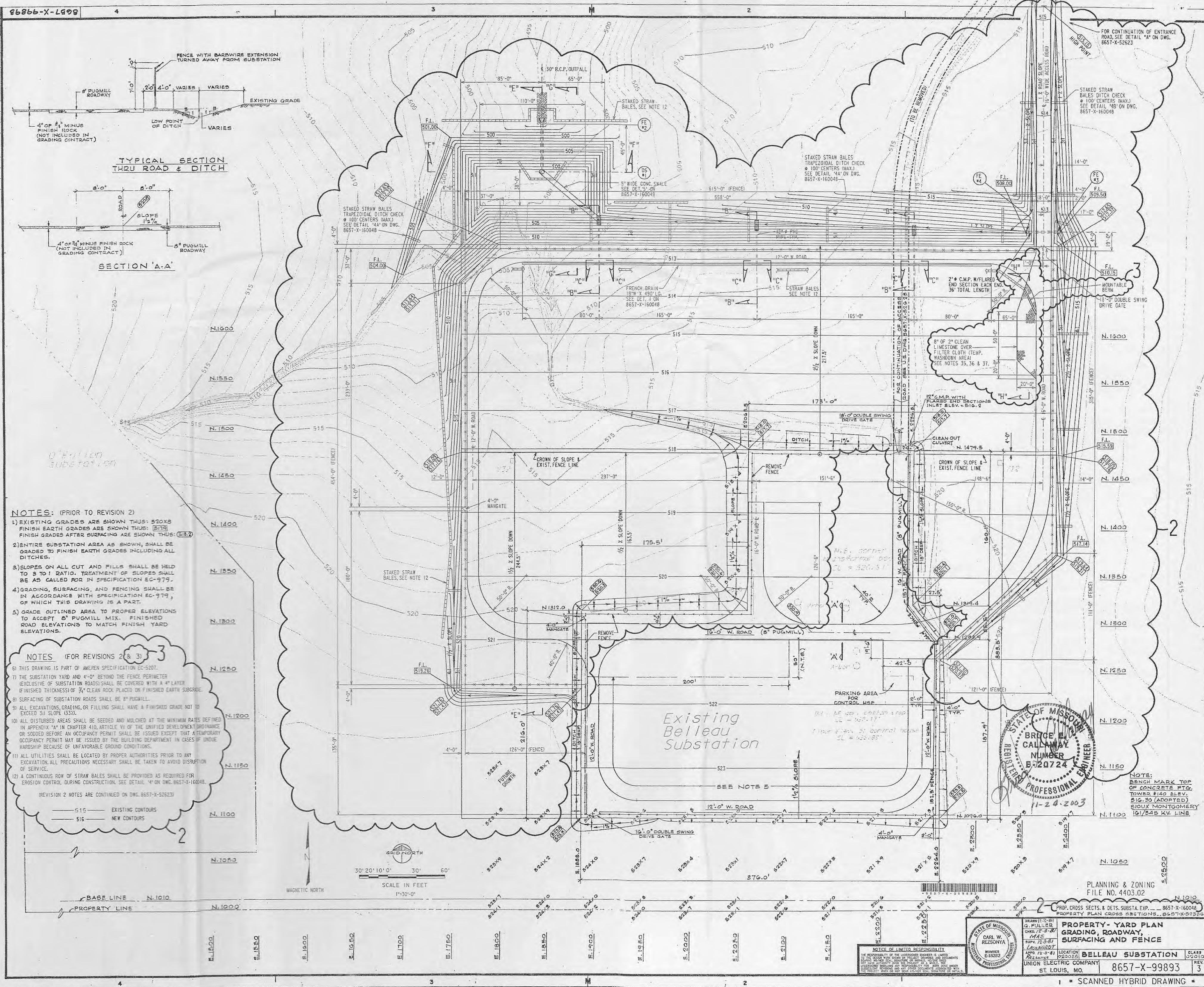
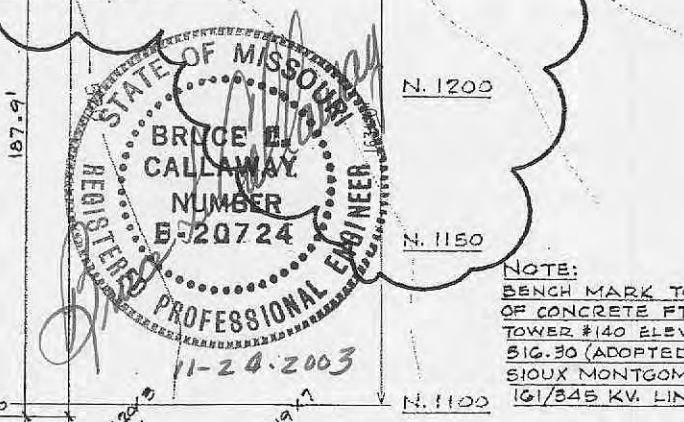
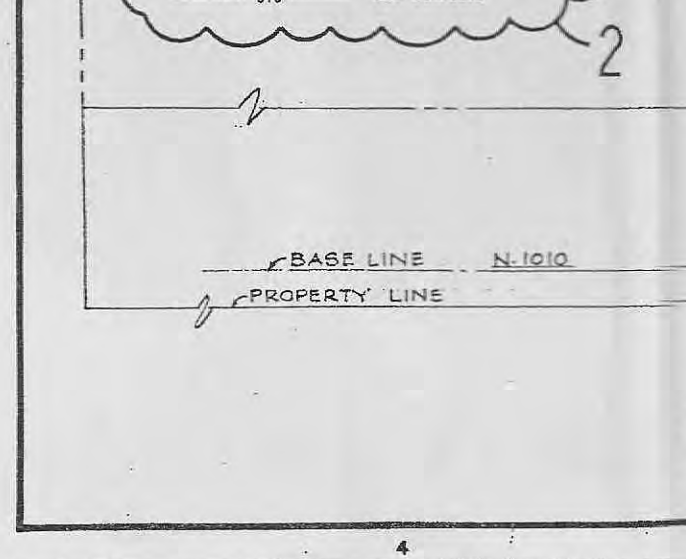


NO.	DATE	DESCRIPTION
1	11-10-20	PREPARED FOR SUBMITTAL
2	11-10-20	REVISED PER COMMENTS
3	11-10-20	REVISED PER COMMENTS
4	11-10-20	REVISED PER COMMENTS
5	11-10-20	REVISED PER COMMENTS
6	11-10-20	REVISED PER COMMENTS
7	11-10-20	REVISED PER COMMENTS
8	11-10-20	REVISED PER COMMENTS
9	11-10-20	REVISED PER COMMENTS
10	11-10-20	REVISED PER COMMENTS
11	11-10-20	REVISED PER COMMENTS
12	11-10-20	REVISED PER COMMENTS
13	11-10-20	REVISED PER COMMENTS
14	11-10-20	REVISED PER COMMENTS
15	11-10-20	REVISED PER COMMENTS
16	11-10-20	REVISED PER COMMENTS
17	11-10-20	REVISED PER COMMENTS
18	11-10-20	REVISED PER COMMENTS
19	11-10-20	REVISED PER COMMENTS
20	11-10-20	REVISED PER COMMENTS
21	11-10-20	REVISED PER COMMENTS
22	11-10-20	REVISED PER COMMENTS
23	11-10-20	REVISED PER COMMENTS
24	11-10-20	REVISED PER COMMENTS
25	11-10-20	REVISED PER COMMENTS
26	11-10-20	REVISED PER COMMENTS
27	11-10-20	REVISED PER COMMENTS
28	11-10-20	REVISED PER COMMENTS
29	11-10-20	REVISED PER COMMENTS
30	11-10-20	REVISED PER COMMENTS
31	11-10-20	REVISED PER COMMENTS
32	11-10-20	REVISED PER COMMENTS
33	11-10-20	REVISED PER COMMENTS
34	11-10-20	REVISED PER COMMENTS
35	11-10-20	REVISED PER COMMENTS
36	11-10-20	REVISED PER COMMENTS
37	11-10-20	REVISED PER COMMENTS
38	11-10-20	REVISED PER COMMENTS
39	11-10-20	REVISED PER COMMENTS
40	11-10-20	REVISED PER COMMENTS
41	11-10-20	REVISED PER COMMENTS
42	11-10-20	REVISED PER COMMENTS
43	11-10-20	REVISED PER COMMENTS
44	11-10-20	REVISED PER COMMENTS
45	11-10-20	REVISED PER COMMENTS
46	11-10-20	REVISED PER COMMENTS
47	11-10-20	REVISED PER COMMENTS
48	11-10-20	REVISED PER COMMENTS
49	11-10-20	REVISED PER COMMENTS
50	11-10-20	REVISED PER COMMENTS
51	11-10-20	REVISED PER COMMENTS
52	11-10-20	REVISED PER COMMENTS
53	11-10-20	REVISED PER COMMENTS
54	11-10-20	REVISED PER COMMENTS
55	11-10-20	REVISED PER COMMENTS
56	11-10-20	REVISED PER COMMENTS
57	11-10-20	REVISED PER COMMENTS
58	11-10-20	REVISED PER COMMENTS
59	11-10-20	REVISED PER COMMENTS
60	11-10-20	REVISED PER COMMENTS
61	11-10-20	REVISED PER COMMENTS
62	11-10-20	REVISED PER COMMENTS
63	11-10-20	REVISED PER COMMENTS
64	11-10-20	REVISED PER COMMENTS
65	11-10-20	REVISED PER COMMENTS
66	11-10-20	REVISED PER COMMENTS
67	11-10-20	REVISED PER COMMENTS
68	11-10-20	REVISED PER COMMENTS
69	11-10-20	REVISED PER COMMENTS
70	11-10-20	REVISED PER COMMENTS
71	11-10-20	REVISED PER COMMENTS
72	11-10-20	REVISED PER COMMENTS
73	11-10-20	REVISED PER COMMENTS
74	11-10-20	REVISED PER COMMENTS
75	11-10-20	REVISED PER COMMENTS
76	11-10-20	REVISED PER COMMENTS
77	11-10-20	REVISED PER COMMENTS
78	11-10-20	REVISED PER COMMENTS
79	11-10-20	REVISED PER COMMENTS
80	11-10-20	REVISED PER COMMENTS
81	11-10-20	REVISED PER COMMENTS
82	11-10-20	REVISED PER COMMENTS
83	11-10-20	REVISED PER COMMENTS
84	11-10-20	REVISED PER COMMENTS
85	11-10-20	REVISED PER COMMENTS
86	11-10-20	REVISED PER COMMENTS
87	11-10-20	REVISED PER COMMENTS
88	11-10-20	REVISED PER COMMENTS
89	11-10-20	REVISED PER COMMENTS
90	11-10-20	REVISED PER COMMENTS
91	11-10-20	REVISED PER COMMENTS
92	11-10-20	REVISED PER COMMENTS
93	11-10-20	REVISED PER COMMENTS
94	11-10-20	REVISED PER COMMENTS
95	11-10-20	REVISED PER COMMENTS
96	11-10-20	REVISED PER COMMENTS
97	11-10-20	REVISED PER COMMENTS
98	11-10-20	REVISED PER COMMENTS
99	11-10-20	REVISED PER COMMENTS
100	11-10-20	REVISED PER COMMENTS



- NOTES: (PRIOR TO REVISION 2)**
- EXISTING GRADES ARE SHOWN THUS: 50X8 FINISH GRADES ARE SHOWN THUS: 80X8 FINISH GRADES AFTER SURFACING ARE SHOWN THUS: 80X8
 - ENTIRE SUBSTATION AREA AS SHOWN, SHALL BE GRADED TO FINISH GRADES INCLUDING ALL DITCHES.
 - SLOPES ON ALL CUT AND FILLS SHALL BE HELD TO 3 TO 1 RATIO. TREATMENT OF SLOPES SHALL BE AS CALLED FOR IN SPECIFICATION 80-979.
 - GRADING, SURFACING, AND FENCING SHALL BE IN ACCORDANCE WITH SPECIFICATION 80-979, OF WHICH THIS DRAWING IS A PART.
 - GRADE OUTLINED AREA TO PROPER ELEVATIONS TO ACCEPT 6" PUGMILL MIX. FINISHED ROAD ELEVATIONS TO MATCH FINISH YARD ELEVATIONS.

- NOTES: (FOR REVISIONS 2 & 3)**
- THIS DRAWING IS PART OF ANOTHER SPECIFICATION SECTION.
 - THE SUBSTATION YARD AND 4'-0" BEYOND THE FENCE PERIMETER EXCLUSIVE OF SUBSTATION ROADWAY SHALL BE COVERED WITH A 4" LAYER OF FINISHED THICKNESS OF 3" CLEAN ROCK PLACED ON FINISHED EARTH SURFACE.
 - SURFACING OF SUBSTATION ROADWAY SHALL BE 2" PUGMILL.
 - ALL EXCAVATIONS, GRADING, OR FILLING SHALL HAVE A FINISHED GRADE NOT TO EXCEED 3:1 SLOPE 1:3:30.
 - ALL DISTURBED AREAS SHALL BE SEEDED AND MULCHED AT THE WITHIN BARS DEFINED IN APPENDIX "A" IN CHAPTER 410, ARTICLE VI OF THE UNIFIED DEVELOPMENT ORDINANCE OR SOONER BEFORE AN OCCUPANCY PERMIT SHALL BE ISSUED EXCEPT THAT A TEMPORARY OCCUPANCY PERMIT MAY BE ISSUED BY THE BUILDING DEPARTMENT IN CASES OF UNFAVORABLE GROUND CONDITIONS.
 - ALL UTILITIES SHALL BE LOCATED BY PROPER AUTHORITIES PRIOR TO ANY EXCAVATION. ALL PRECAUTIONS NECESSARY SHALL BE TAKEN TO AVOID DISRUPTION OF SERVICES.
 - A CONTINUOUS ROW OF STRAW BALES SHALL BE PROVIDED AS REQUIRED FOR EROSION CONTROL DURING CONSTRUCTION. SEE DETAIL "A" ON DWG. 8657-X-160048.



PLANNING & ZONING
FILE NO. 4403.02

PROPERTY YARD PLAN
GRADING, ROADWAY
SURFACING AND FENCE

BELLEAU SUBSTATION
8657-X-99893

UNION ELECTRIC COMPANY
ST. LOUIS, MO.